



Ranked in Top 50  
Commercial Firms in U.S.

7.5 MONTHS FREE WITH 5 YEAR LEASE



# FOR LEASE

290 Roberts Street, East Hartford, CT 06108  
Up to 16,212± SF Available Space – Multiple Suites

LEASE RATE: \$16.95/SF GROSS + JANITORIAL

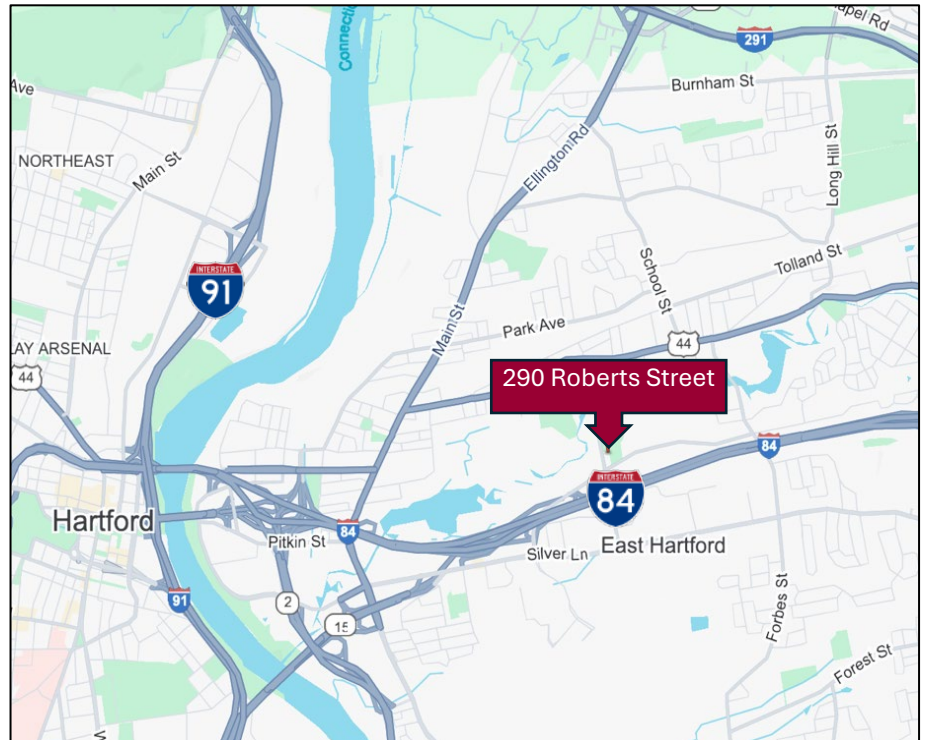
## HIGHLIGHTS

- 30,352± SF Building
- Up to 16,212± available
- Updated Modern Office Space
- Drive-thru available
- 3-Story Bldg with 10,000 SF Floor Plates
- Recent upgrades including LED Lighting
- 1 Elevator
- 100% Sprinklered
- Basement Storage Available
- 111 Parking Spaces on 2.21 acres
- Traffic: 9,500± ADT, excellent visibility
- Quick Access to I-84, Exit 58

## CONTACTS

**Thomas Wilks** | (860) 761-6018  
[twilks@orlcommercial.com](mailto:twilks@orlcommercial.com)

**Jay L. Morris** | (860) 721-0033  
[jmorris@orlcommercial.com](mailto:jmorris@orlcommercial.com)



[WWW.ORLCOMMERCIAL.COM](http://WWW.ORLCOMMERCIAL.COM)



2 Summit Place, Branford, CT 06405 | (203) 488-1555 | (203) 315-4046  
2430 Silas Deane Highway, Rocky Hill, CT 06067 | (860) 721-0033 | (860) 721-7882  
Broker of Record: Jay Morris | (860) 721-0033 | [jmorris@orlcommercial.com](mailto:jmorris@orlcommercial.com) | License: REB.0755257



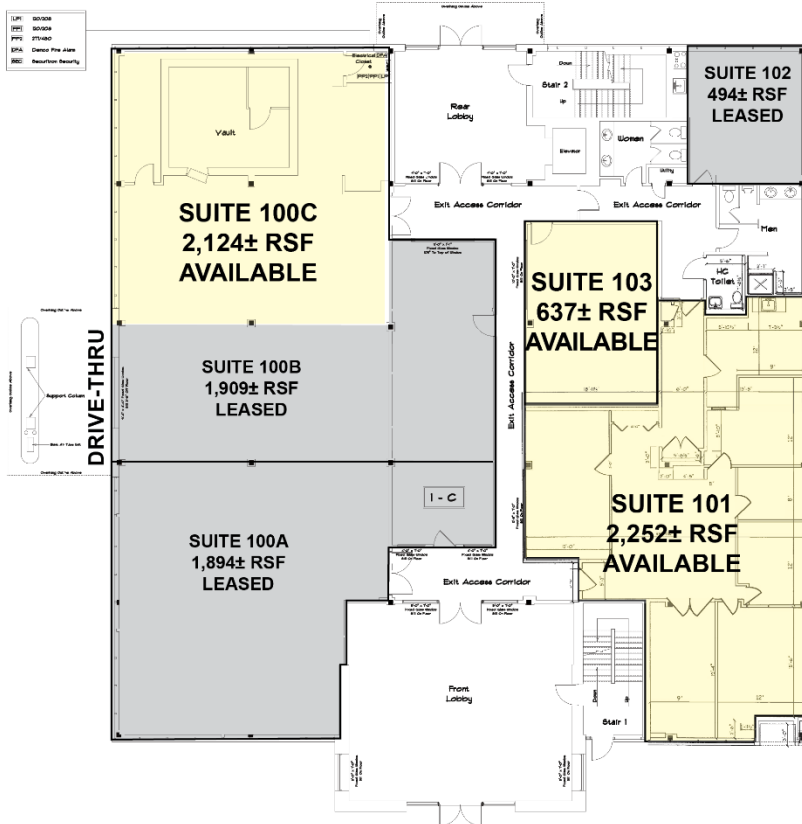
# FOR LEASE

LEASE RATE: \$16.95/SF GROSS + JANITORIAL

290 Roberts Ave, East Harford, CT

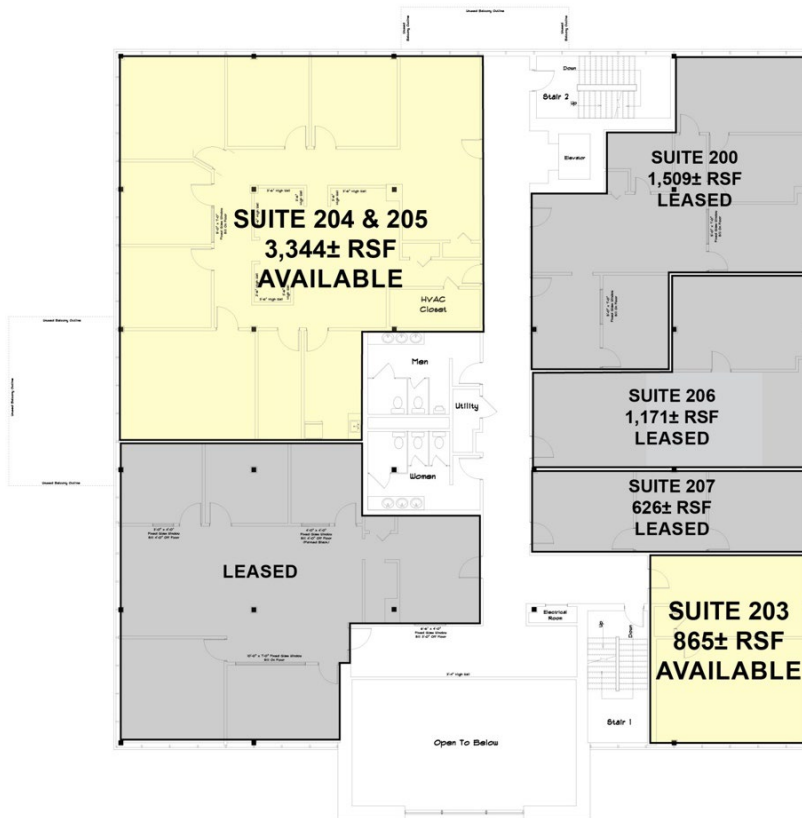
637± SF and up

**7.5 MONTHS FREE WITH 5 YEAR LEASE**



## 1<sup>st</sup> Floor Availability

- Suite 100C: 2,124± SF
- Suite 101: 2,252± SF
- Suite 103: 637± SF
- Total Suite 101-103: 2,889± SF



## 2<sup>nd</sup> Floor Availability

- Suite 203: 865± SF
- Suite 204 & 205: 3,344± SF



[WWW.ORLCOMMERCIAL.COM](http://WWW.ORLCOMMERCIAL.COM)



2 Summit Place, Branford, CT 06405 | (203) 488-1555 | (203) 315-4046

2430 Silas Deane Highway, Rocky Hill, CT 06067 | (860) 721-0033 | (860) 721-7882

Broker of Record: Jay Morris | (860) 721-0033 | [jmorris@orlcommercial.com](mailto:jmorris@orlcommercial.com) | License: REB.0755257

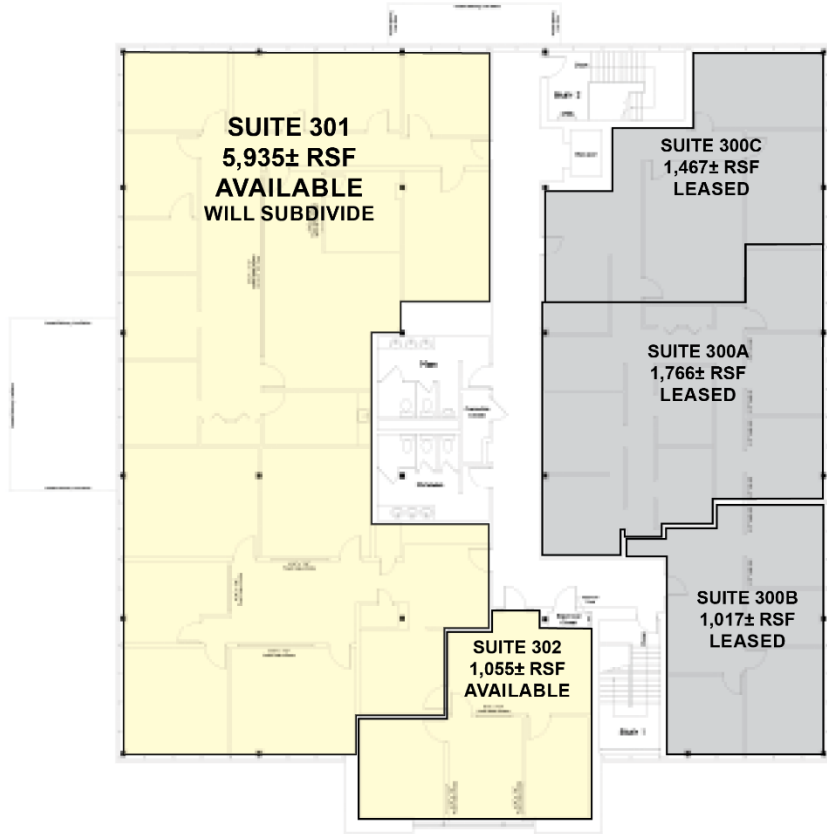
LEASE RATE: \$16.95/SF GROSS + JANITORIAL

290 Roberts Ave, East Harford, CT

637± SF and up

**FOR LEASE** 

**7.5 MONTHS FREE WITH 5 YEAR LEASE**



### 3<sup>rd</sup> Floor Availability

- Suite 301: 5,935± SF (will subdivide)
- Suite 302: 1,055± SF



[WWW.ORLCOMMERCIAL.COM](http://WWW.ORLCOMMERCIAL.COM)



2 Summit Place, Branford, CT 06405 | (203) 488-1555 | (203) 315-4046

2430 Silas Deane Highway, Rocky Hill, CT 06067 | (860) 721-0033 | (860) 721-7882

Broker of Record: Jay Morris | (860) 721-0033 | jmorris@orlcommercial.com | License: REB.0755257

While the information contained herein has been obtained from sources deemed to be reliable, no guarantee is made as to its accuracy. | PAGE 3 OF 4



# FOR LEASE

LEASE RATE: \$16.95/SF GROSS + JANITORIAL

290 Roberts Ave, East Harford, CT

637± SF and up

**7.5 MONTHS FREE WITH 5 YEAR LEASE**

### BUILDING INFORMATION

**GROSS BLD. AREA:** 30,352± SF

**AVAILABLE AREA:** 16,212± SF Total

Suite 100C: 2,124± SF

Suite 101: 2,252± SF

Suite 103: 637± SF

Suite 203: 865± SF

Suite 204-205: 3,344± SF

Suite 301: 5,935± SF (will subdivide)

Suite 302: 1,055± SF

**CONSTRUCTION:** Steel

**ROOF TYPE:** Flat

**YEAR BUILT:** 1987

### MECHANICAL EQUIPMENT

**AIR CONDITIONING:** 100%

**HEAT:** Gas, Forced hot air

**SPRINKLERED:** 100% Wet

### SITE INFORMATION

**SITE AREA:** 2.21± acres

**ZONING:** I-2

**PARKING:** 111 spaces

**SIGNAGE:** Directory

**VISIBILITY:** Excellent on Roberts St/Hillside St  
(Signalized Intersection)

**HWY ACCESS:** I-84, Rt. 15, Exit 91 (Silver Lane)

**TRAFFIC COUNT:** 11,300± ADT

### UTILITIES

**SEWER/WATER:** City

**GAS:** Yes

### EXPENSES

**RE TAXES:**  Tenant  Landlord

**UTILITIES:**  Tenant  Landlord

**INSURANCE:**  Tenant  Landlord

**MAINTENANCE:**  Tenant  Landlord

**JANITORIAL:**  Tenant  Landlord



### CONTACTS

**Thomas Wilks** | (860) 761-6018

[twilks@orlcommercial.com](mailto:twilks@orlcommercial.com)

**Jay L. Morris** | (860) 721-0033

[jmorris@orlcommercial.com](mailto:jmorris@orlcommercial.com)



[WWW.ORLCOMMERCIAL.COM](http://WWW.ORLCOMMERCIAL.COM)



2 Summit Place, Branford, CT 06405 | ☎ (203) 488-1555 | 📠 (203) 315-4046

2430 Silas Deane Highway, Rocky Hill, CT 06067 | ☎ (860) 721-0033 | 📠 (860) 721-7882

Broker of Record: Jay Morris | (860) 721-0033 | [jmorris@orlcommercial.com](mailto:jmorris@orlcommercial.com) | License: REB.0755257