

15,345 SF AVAILABLE FOR LEASE

**END CAP UNIT**

**4800 140TH AVE N**

CLEARWATER, FL 33762



**RECENTLY RENOVATED OFFICE SPACE**  
SPACE AVAILABLE Q1 2026



**CUSHMAN &  
WAKEFIELD**

# BUILDING HIGHLIGHTS

**± 11,095 SF**

**WAREHOUSE**

**± 4,250 SF**

**OFFICE**

**± 15,345 SF**

**TOTAL**

**100%**

**AIR CONDITIONED**

**LOADING  
CAPABILITIES:**

ONE (1)  
9'X10' DOCK  
HIGH DOOR  
ONE (1)  
12'X14' RAMP

**CONSTRUCTION  
TYPE:**

TILT WALL

**SPRINKLER  
TYPE:**

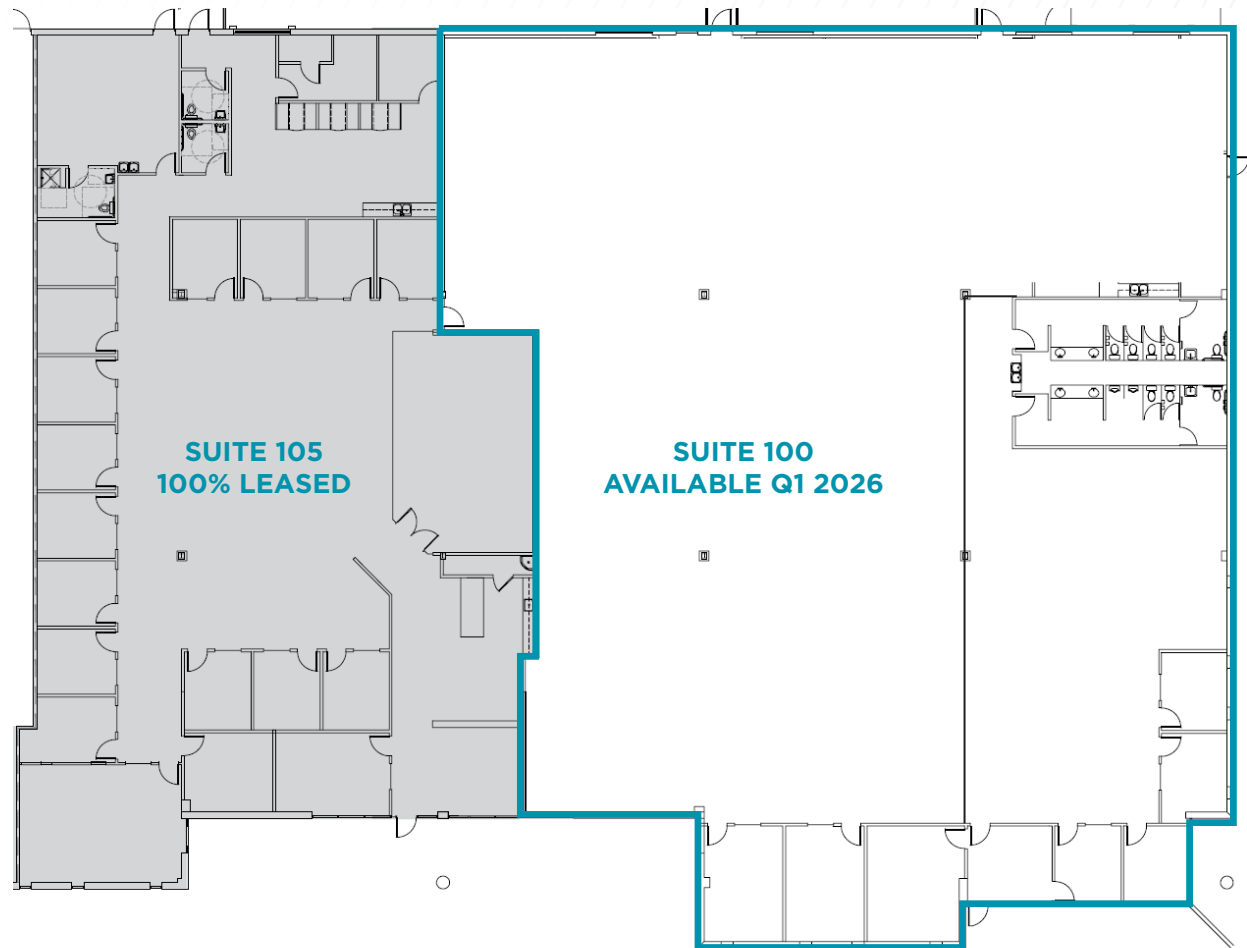
WET SYSTEM

**CLEAR HEIGHT:**

18'

**POWER:**

3 PHASE  
800A  
120/240V





# THE LOCATION



# FOR MORE INFORMATION

## PLEASE CONTACT:

---

### **JT Faircloth, SIOR**

Senior Director

+1 813 833 3242

[jt.faircloth@cushwake.com](mailto:jt.faircloth@cushwake.com)

### **Casey Perry**

Director

+1 813 233 6564

[casey.g.perry@cushwake.com](mailto:casey.g.perry@cushwake.com)