

177 Acre +/- E Irlo Bronson Memorial Highway



Tab Bish
Broker Assoc.
M: 407.427.0743
tab.bish@compass.com



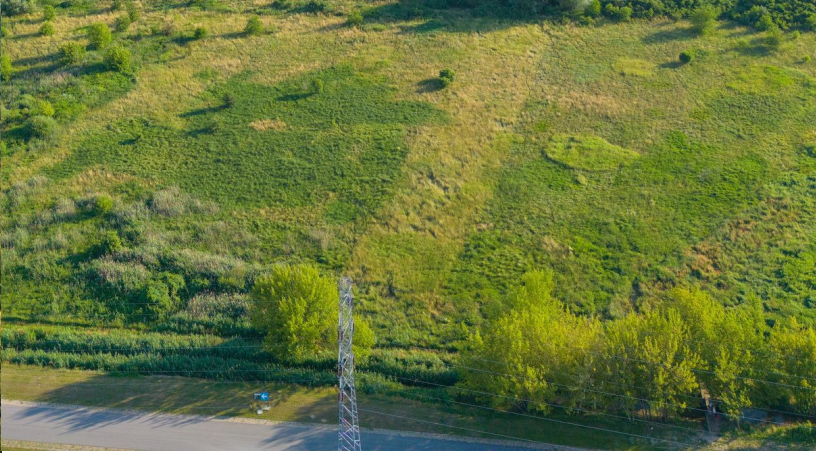
COMPASS
COMMERCIAL

9096 E Irlo Bronson MH

117 Acres +/- on the corner of US 192 and US 441 in unincorporated Holopaw (Saint Cloud), Florida. Currently zoned Rural Residential, allowing two units per acre, a PUD would allow for a mix of retail and residential. The highest and best use of the property is an RV vacation park, Mobile Home Rental Park, Industrial Complex, or a combination.



ADDITIONAL PHOTOS



Tab Bish
Broker Assoc.
M: 407.427.0743
tab.bish@compass.com



COMPASS
COMMERCIAL

FIRST FLOOR - 0,000 SF

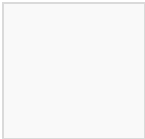
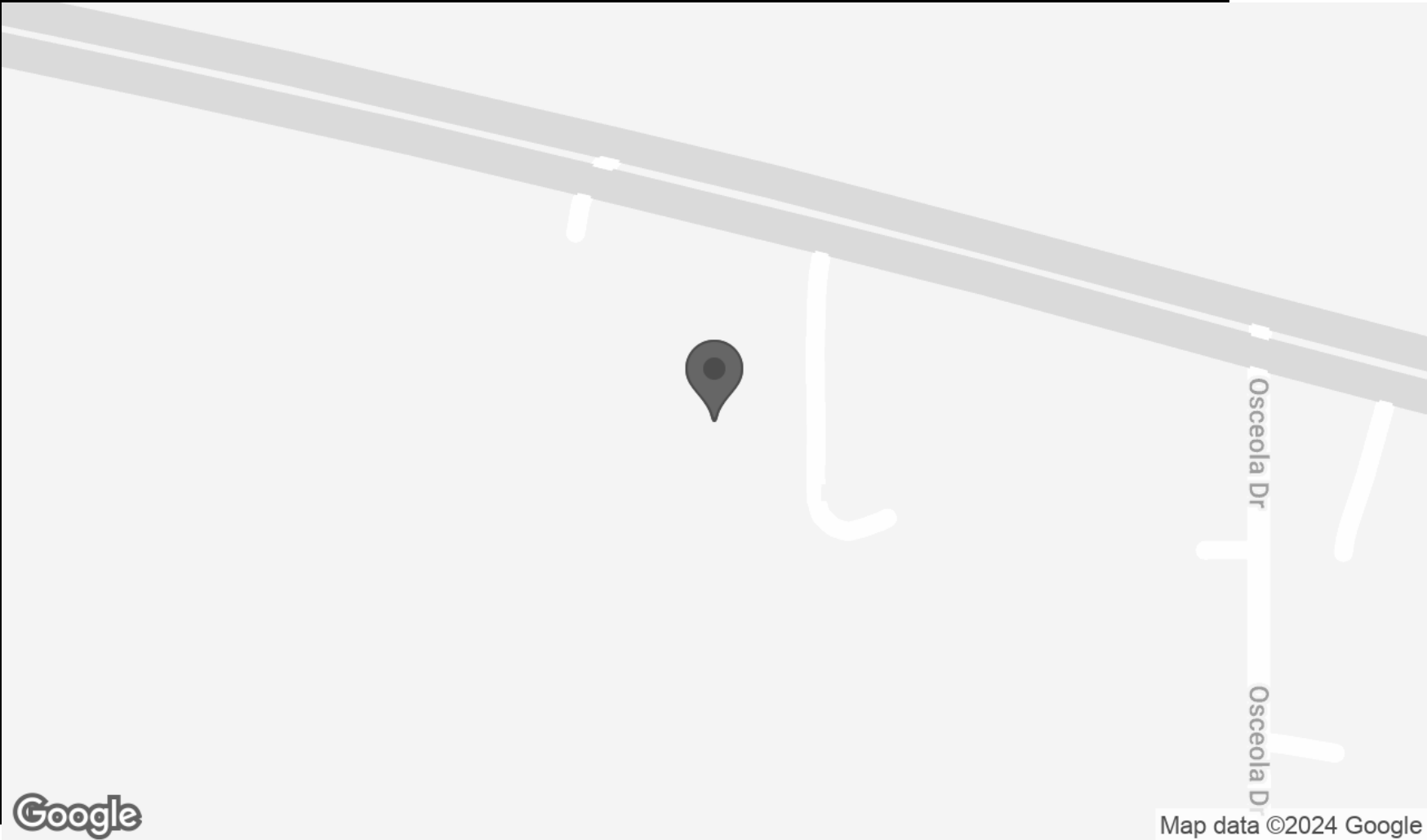


Tab Bish
Broker Assoc.
M: 407.427.0743
tab.bish@compass.com



COMPASS
COMMERCIAL

LOCATION MAP



Agent Name
Agent Title
000.000.0000
agent.email@compass.com



COMPASS
COMMERCIAL



Tab Bish
Broker Assoc.
M: 407.427.0743
tab.bish@compass.com

COMPASS
COMMERCIAL