

SCALZO

COMMERCIAL & NEW DEVELOPMENT

5-7 West Cross Street Hawthorne, NY 10532

For Lease

Contact:

**Scalzo Commercial
& New Development**

Tony DiCamillo

**914.787-9571
nyctrealtygroup@gmail.com**

**4 Stony Hill Road
Bethel, CT 06801
2500 Westchester Ave
Purchase, NY 10577**



Executive Summary

The Offering:

Scalzo Commercial & New Development is pleased to offer for lease 2 Office Suites located in Hawthorne, NY Westchester County.

Property Highlights:

- One Office Suite Available – 1,926 SF, Suite #4, \$24 PSF plus Utilities
- Warehouse Space Available
- Gross Leases
- Parking: 70 Spaces + Ample off-street parking
- Easy access to 9A, Taconic Parkway & Saw Mill River Parkway



The Property

5-7 West Cross Street Hawthorne, NY 10532

Property Specifications

Property Type: Office Suites & Warehouse 1

Units: 1,926 RSF

Property Size: 1.15 Acres

Building Size: 30,000 SF

Year Built: 1985-1994

Levels: 2

Parking: 70 Spaces

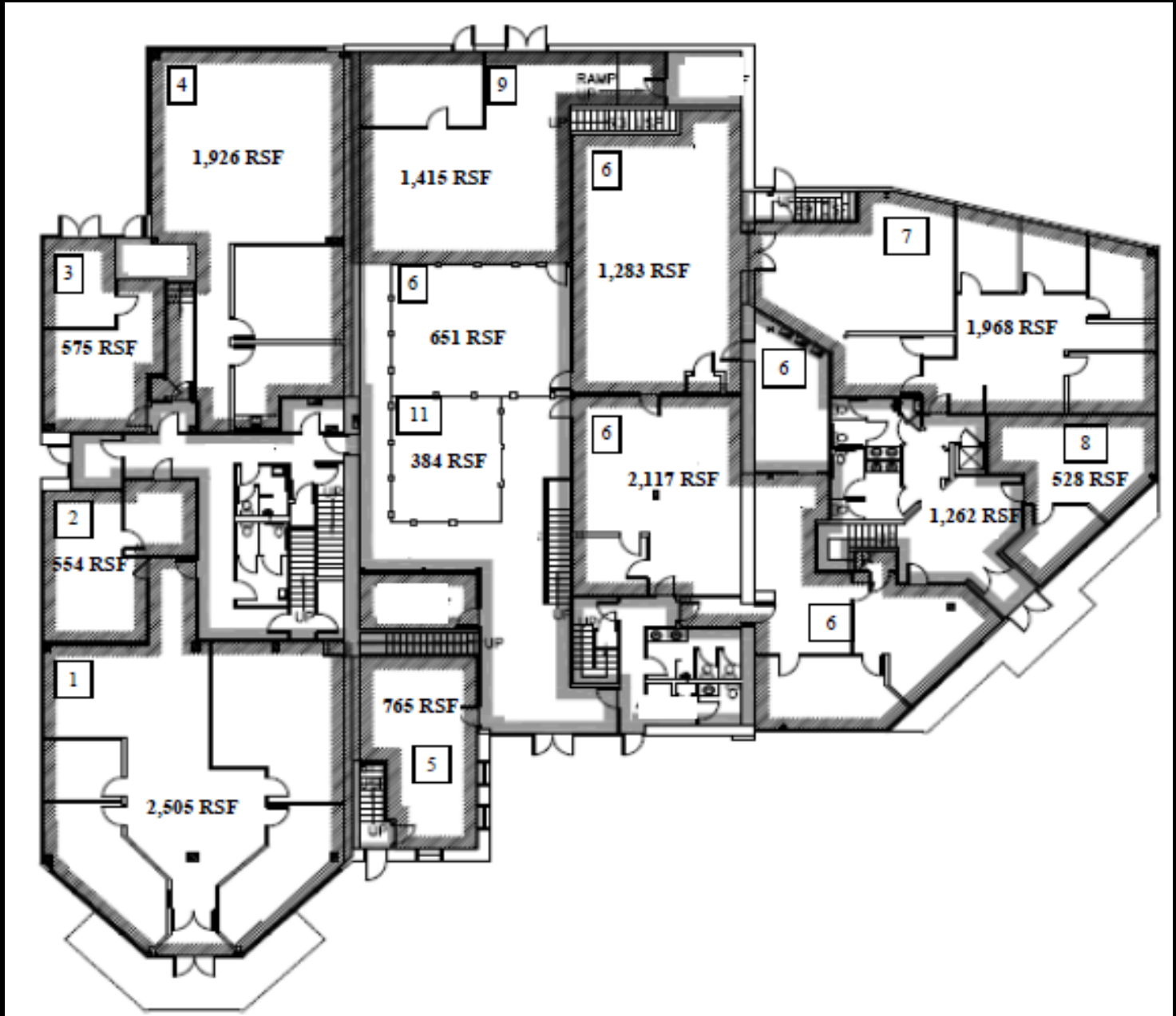
Price

Lease Price: \$21 PSF Gross

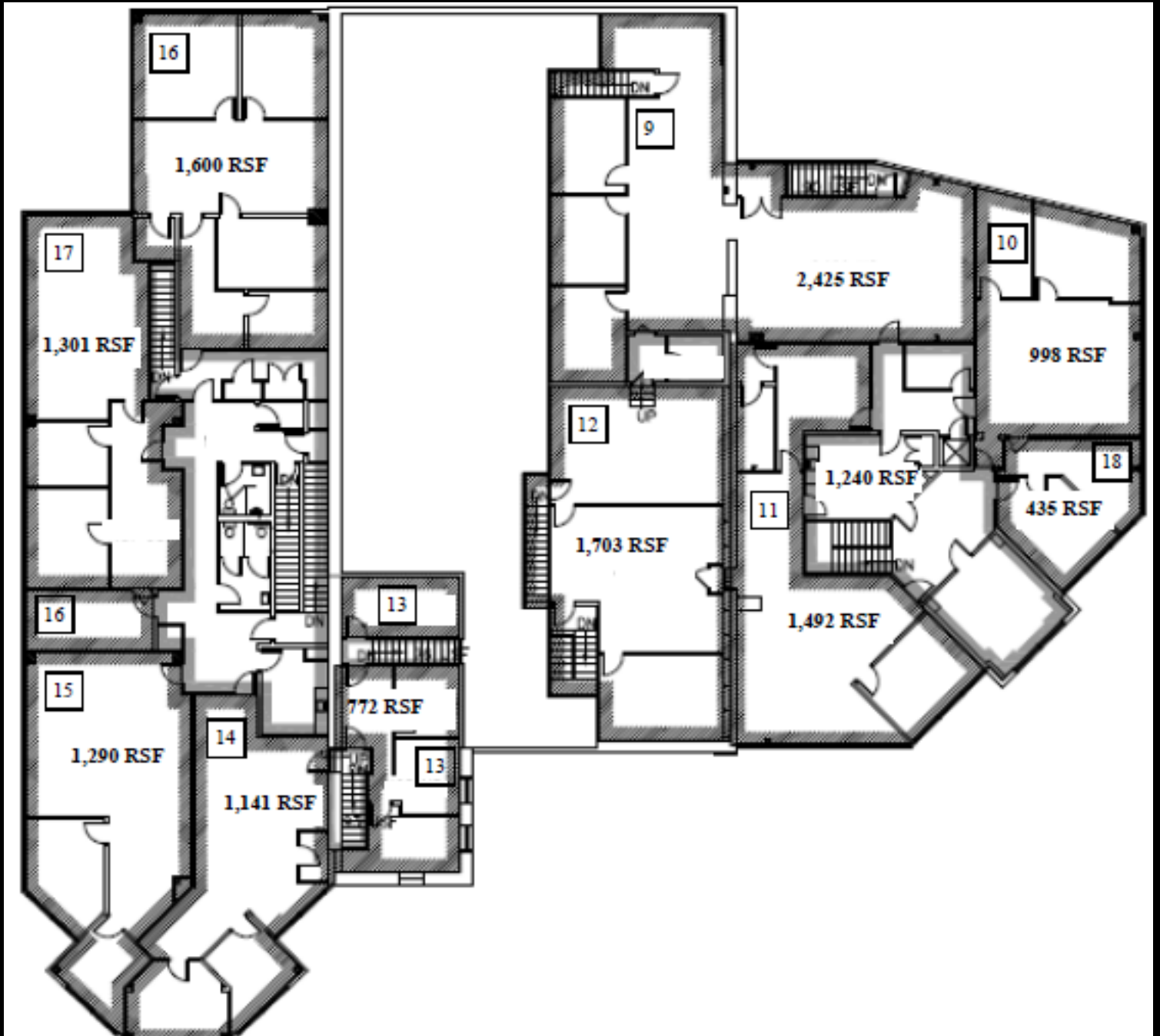
Lease Plus Electric

WAREHOUSE SPACE AVAILABLE

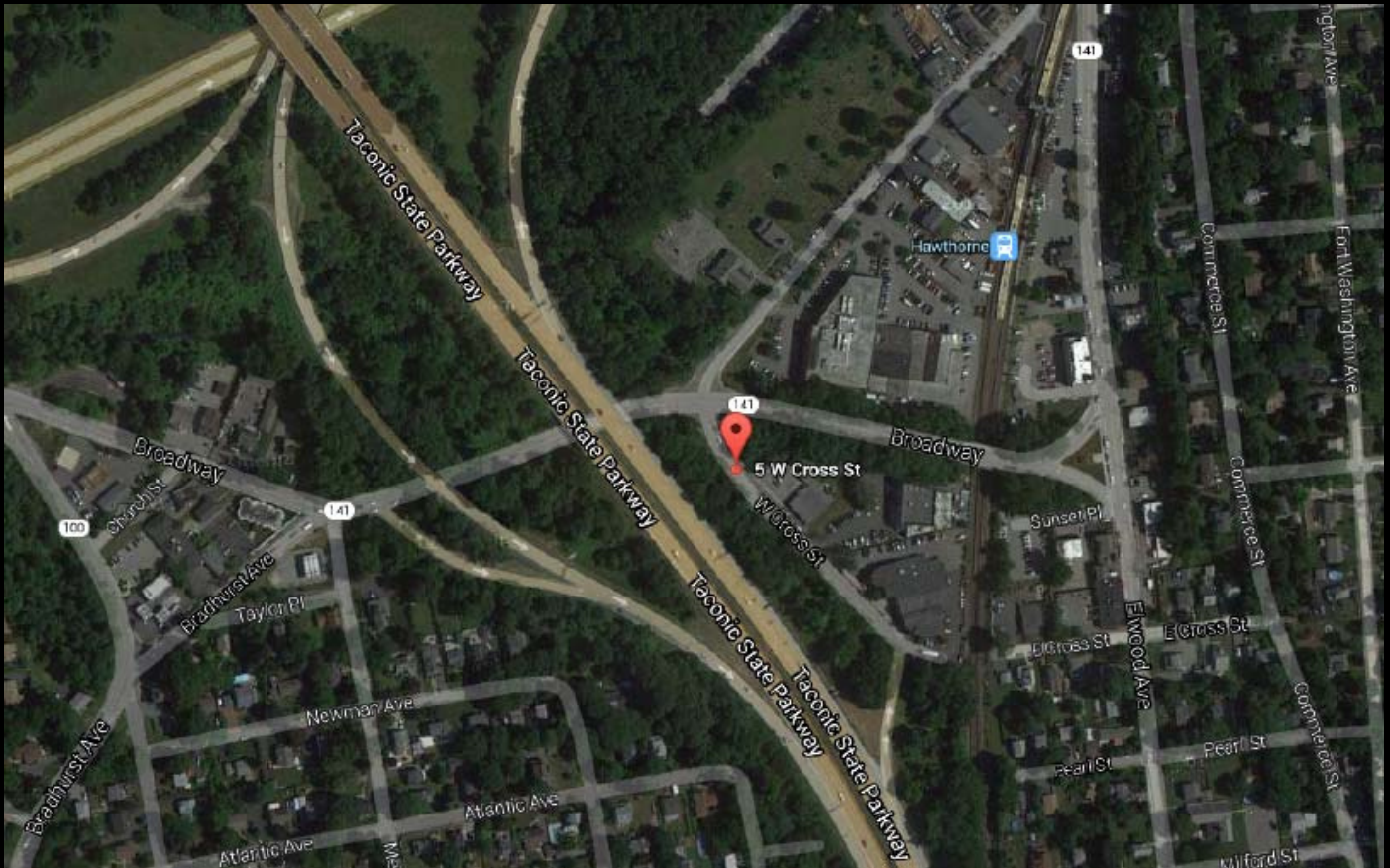
1st Floorplans



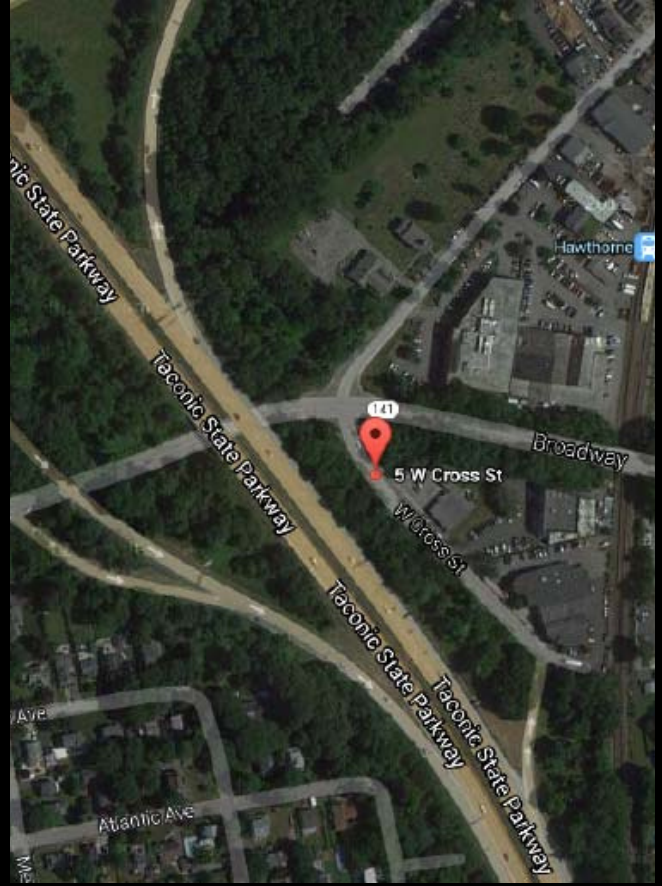
2nd Floorplan



Aerial View



Photos of the Area



Contact



Tony DiCamillo

Licensed Real Estate Salesperson

Scalzo Commercial & New Development

914.787-9571 | nyctrealtygroup@gmail.com

2500 Westchester Avenue, Suite 109, Purchase, NY 10577

Although all information is furnished regarding for sale, rental or financing is from sources we deem reliable, such information has not been verified and no express representation is made nor is any to be implied as to the accuracy thereof, and it is submitted subject to errors, omissions, changes of price, rental or other conditions, prior sale, lease or financing, or withdrawal without notice. Buyer must verify the information and bears all risk for any inaccuracies.