



FOR LEASE: OFFICE SPACE

11 Adams Street, Biddeford, ME 04005

Property Highlights

- 3,000 ± sf of Class A Downtown Biddeford office space for lease
- Single office suites available on second floor
- Exposed brick, wood floors and large windows offering natural sunlight
- Located in downtown Biddeford, just across the street from City Hall, and adjacent to the District Courthouse.

PORTA & CO. | 30 Milk Street, Second Floor | Portland, ME 04101 | (207)-747-1515

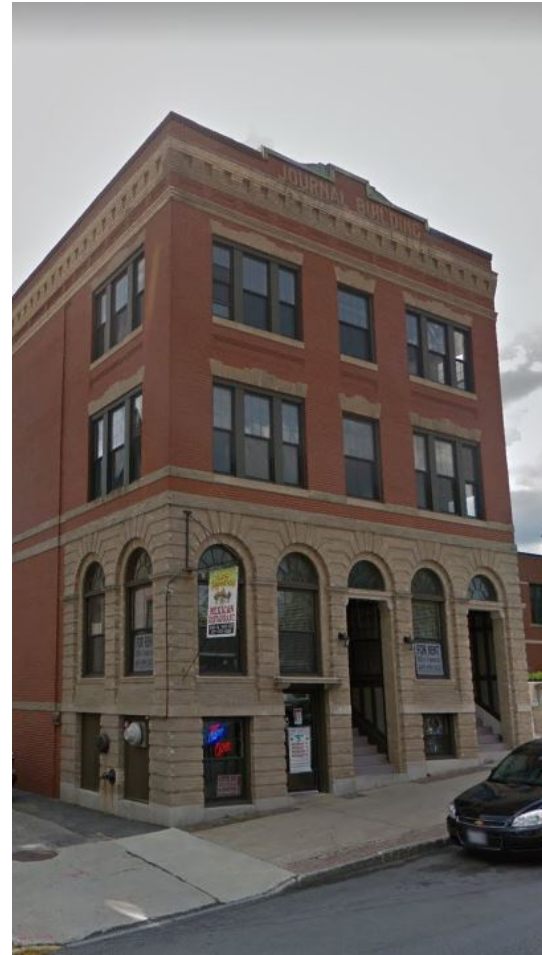
www.portacompany.com

Property Details

11 Adams Street | Biddeford, ME 04005

PORTA
& CO.

Owner	Court Square Properties, LLC
Available Space	Up to 3,000 ± sf
Signage	Outdoor blade sign & lobby directory
Suites	2nd Floor Multiple Single Office Suites 3rd Floor up to 3,000 ± sf
Zoning	MSRD1
Utilities	Municipal
HVAC	Central (natural gas, electric A/C)
Parking	See broker for more details
Sprinkler	Yes
Building Tenants	Berman & Simmons Law
Lease Rate	2nd Floor- \$600 monthly 3rd Floor- \$16.00/sf MG



Photos

11 Adams Street | Biddeford, ME 04005

PORTA
& CO.



Aerial

11 Adams Street | Biddeford, ME 04005



CONTACT US

Anthony Struzziero

Broker
c: 207-329-2335
o: 207-747-1515
astruzziero@portacompany.com

Emmett Peoples

Associate
c: 207-400-4939
o: 207-747-1515
epeoples@portacompany.com

This information has been obtained from sources believed reliable and is intended for informational use only. The information contained herein has not been verified for accuracy or completeness. It is recommended that prospective tenants and buyers conduct their own inspection of the property and verify all information. Any reliance on this information is solely at your own risk. Photos herein are the property of their respective owners. Use of these images without the express written consent of the owner is prohibited.

PORTA & CO. Milk Street, Second Floor | Portland, ME 04101 | (207)-747-1515

www.portacompany.com