

SPACE

11,500 SF

Floor

Entire 6th Floor

ASKING RENT

\$83.00

Term

Negotiable

Occupancy

***October 2025**

Electric

Direct

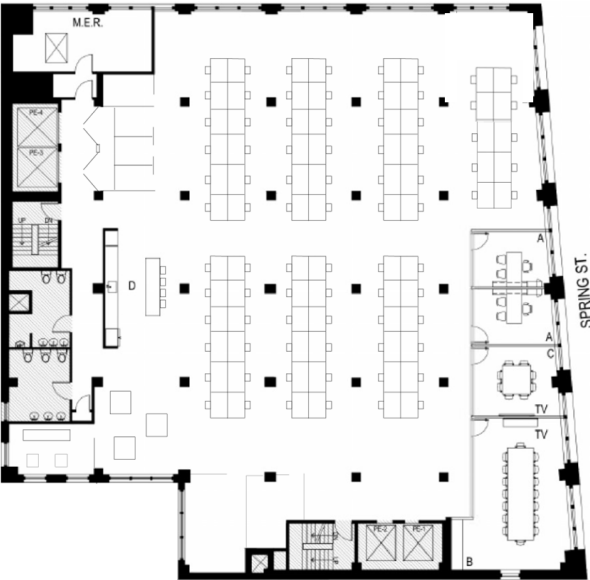
SPACE FEATURES

- Full floor with 3 sides of light
- 11 Foot Ceilings
- Accommodate 80-90 people
- Ideal for Tech Firm, Private Equity, Venture Capital, Gallery, Creative Agency
- Landlord will add additional glass front offices/meeting rooms if needed

BUILDING FEATURES

- Renovated / Attended lobby
- Tenant-controlled HVAC system
- 24 hour/ 7-day access

Test Fit



Work Area	
Workstations	84
Offices	2
Utility Space	
Coat Closet	1
Copy/Print/ Storage	1
It Room	1
Wellness Room	1
Collaboration Space	
Phone Room	3
Large Conference Room 18 Person	1
Medium Conference Room 10 Person	1
Small Conference Room 8 Person	1
Bistro	1

FOR MORE
INFORMATION,
PLEASE CONTACT:

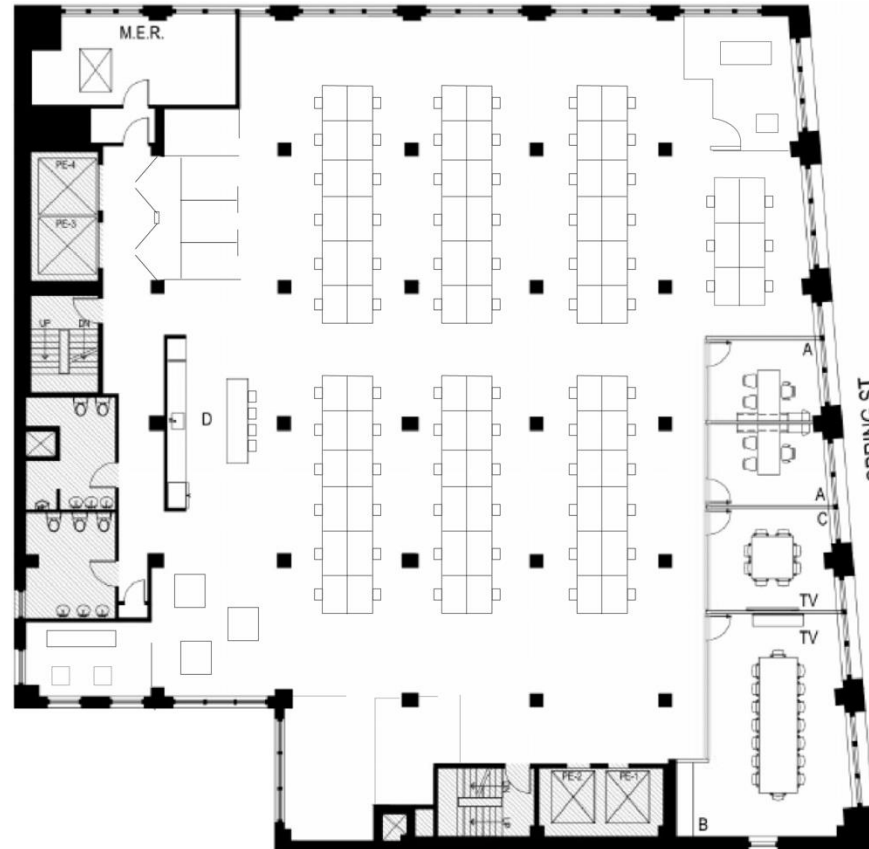
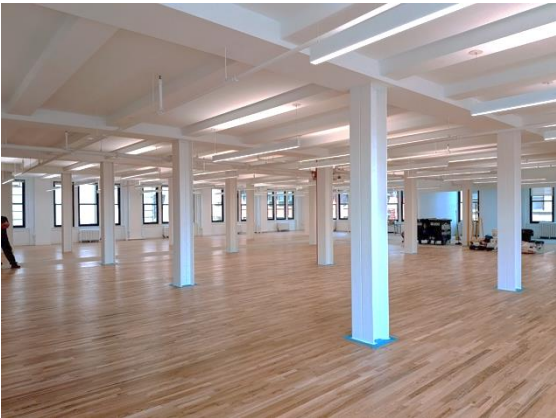
Richard Plehn
Senior Managing Director
646.481.7540
rplehn@lee-associates.com

Dennis Someck
Executive Managing Director | Principal
917.653.1177
dsomeck@lee-associates.com

Justin Myers
Executive Managing Director | Principal
619.840.7360
jmyers@lee-associates.com

All information supplied is from sources deemed reliable and is furnished subject to errors, omissions, modifications, removal of the listing for sale or lease, and to any listing conditions, including the rates and manner of payment of commissions for particular offerings imposed by principals or agreed by this Company, the terms of which are available to principals or duly licensed brokers. Any square footage dimensions set forth are approximate.

Alternative Floor Plan *



Work Area	
Workstations	84
Offices	2
Utility Space	
Coat Closet	1
Copy /Print/ Storage	1
It Room	1
Wellness Room	1
Collaboration Space	
Phone Room	3
Large Conference Room 18 Person	1
Medium Conference Room 10 Person	1
Small Conference Room 8 Person	1
Bistro	1

*Prebuilt will be ready in Occupancy 2025

FOR MORE
INFORMATION,
PLEASE CONTACT:

Richard Plehn

Senior Managing Director

646.481.7540

rplehn@lee-associates.com

Dennis Someck

Executive Managing Director | Principal

917 653 1177

dsomeck@lee-associates.com

Justin Myers

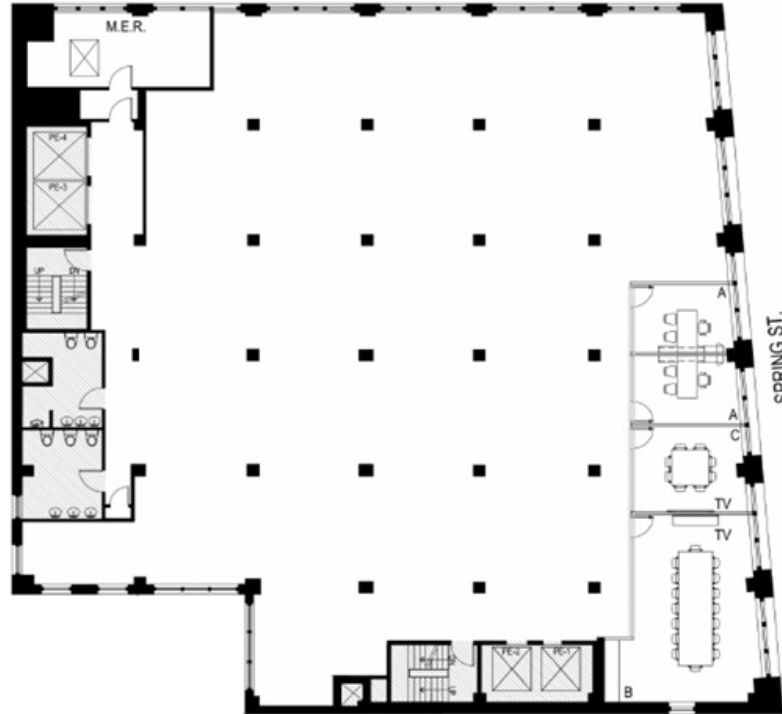
Executive Managing Director | Principal

619.840.7360

jmyers@lee-associates.com

All information supplied is from sources deemed reliable and is furnished subject to errors, omissions, modifications, removal of the listing for sale or lease, and to any listing conditions, including the rates and manner of payment of commissions for particular offerings imposed by principals or agreed by this Company, the terms of which are available to principals or duly licensed brokers. Any square footage dimensions set forth are approximate.

Existing Condition*



*Prebuilt will be ready in Occupancy 2025

FOR MORE
INFORMATION,
PLEASE CONTACT:

Richard Plehn

Senior Managing Director

646.481.7540

rplehn@lee-associates.com

Dennis Someck

Executive Managing Director | Principal

917 653 1177

dsomeck@lee-associates.com

Justin Myers

Executive Managing Director | Principal

619.840.7360

jmyers@lee-associates.com

All information supplied is from sources deemed reliable and is furnished subject to errors, omissions, modifications, removal of the listing for sale or lease, and to any listing conditions, including the rates and manner of payment of commissions for particular offerings imposed by principals or agreed by this Company, the terms of which are available to principals or duly licensed brokers. Any square footage dimensions set forth are approximate.