

500 DRIGGS AVENUE

500 DRIGGS AVENUE

500 DRIGGS AVENUE

BROOKLYN, NY 11211

500 DRIGGS AVENUE

500 DRIGGS AVENUE



COREY COHEN | CCOHEN@ROEBLINGGROUP.COM | 646.906.9054 | ROEBLINGGROUP.COM/COMMERCIAL





500 Driggs Avenue

Brooklyn, NY 11211

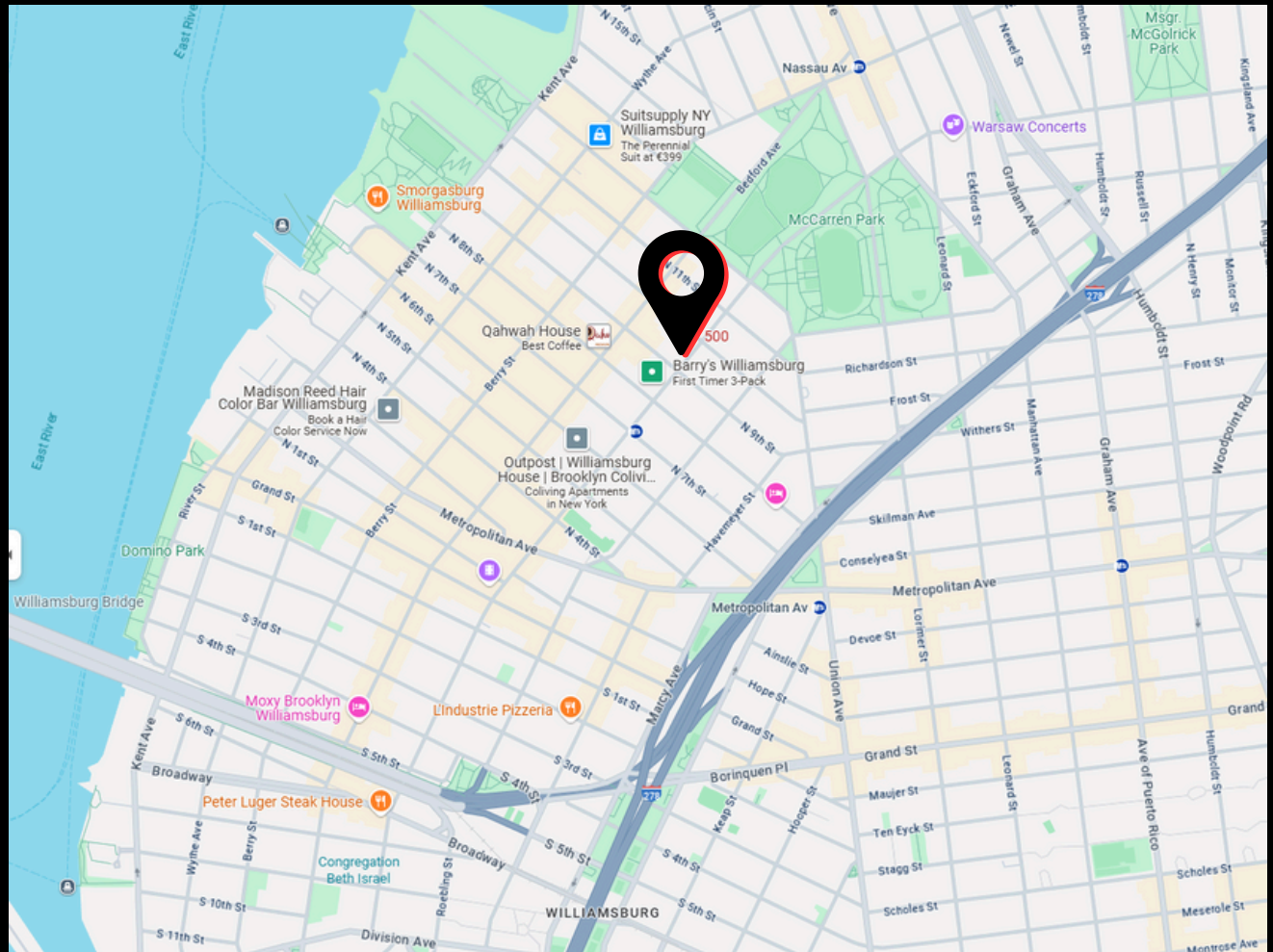
Position your business in one of Brooklyn's most desirable neighborhoods at 500 Driggs Avenue. This professional office space combines style, comfort, and function with high ceilings, hardwood floors, and generous natural light throughout. Featuring air conditioning, dedicated storage space, and prominent signage opportunities, the space is designed to support productivity and make a strong visual impression.



Location Map

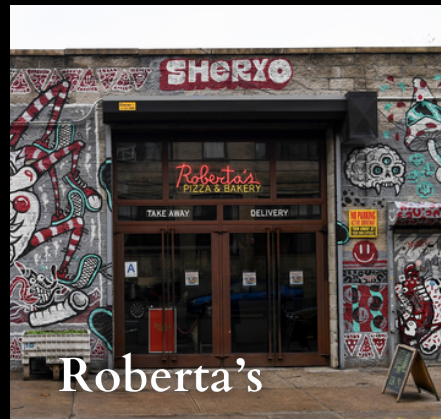
2 Minutes
to Longwood Av
L Station

Travel time by car:
Midtown Manhattan – 30 minutes
Downtown Manhattan – 25 minutes



The Neighborhood

Where industrial meets residential, and hip meets historic. Williamsburg has it all: diversity, creativity, nightlife, and convenience. Whether you're looking for a spacious loft to live, a cool spot to drink, or a vibrant street art scene to explore, you'll find it here.



500 Driggs Avenue

Brooklyn, NY 11211

Space Available	5,100 SF
Price	Negotiable

For viewings and inquiries, please contact:



Corey Cohen
ccohen@roebblingroup.com | 646.906.9054