



2019 IMAGE

1225 S. Main Street

Conyers, Georgia, 30012 | Rockdale County

INDUSTRIAL WAREHOUSE AVAILABLE

SPACE AVAILABLE 24,000 SF

LEASE RATE \$15,500/month NNN

ASKING PRICE \$2,900,000

CHRIS MILLER

770.913.3989 | cmiller@ackermanco.net
www.ackermanco.com

DAVIS MORELAND

770.913.3919 | dmoreland@ackermanco.net

©2025 Ackerman & Co. All rights reserved.

While we have no reason to doubt the accuracy of the information provided from sources we deem reliable, we cannot guarantee it and therefore assume no liability for errors, omissions or changes to this content.

A member of ownership is a licensed real estate agent.

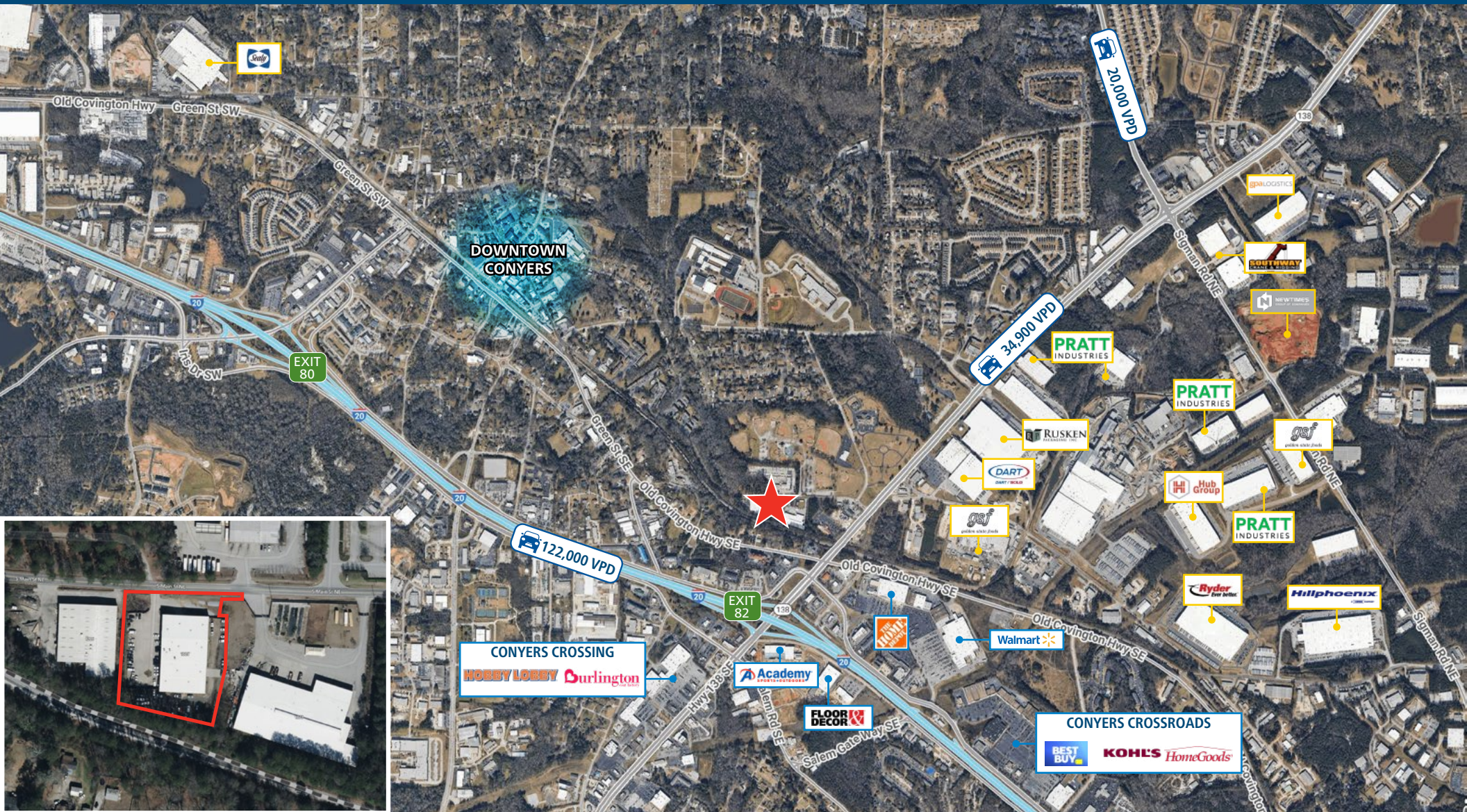
HIGHLIGHTS

- 24,000 SF freestanding building with 2,000 SF office space
- ±1.89 acres
- 7 dock-high doors | 1 drive-in door
- 20'+ ceiling height
- 2019 TPO roof with skylights – 20 yr warranty
- Ample parking with outside storage
- High visibility on South Main Street
- Strategic location at I-20 and GA-138
- Surrounding industrial neighbors include Pratt Industries, Ryder, Sealy, DART/Solo Cup, among others
- Currently operating as a collision center. Available Q1 2026

1225 S. Main Street

24,000 SF Industrial Warehouse on 1.89 acres for Sale or Lease

Conyers, Georgia 30012
Rockdale County



CHRIS MILLER
770.913.3989 | cmiller@ackermanco.net
www.ackermanco.com

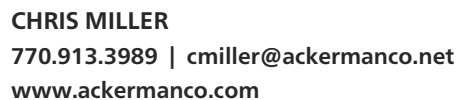
DAVIS MORELAND
770.913.3919 | dmoreland@ackermanco.net

Ackerman & Co.

©2025 Ackerman & Co. All rights reserved. While we have no reason to doubt the accuracy of the information provided from sources we deem reliable, we cannot guarantee it and therefore assume no liability for errors, omissions or changes to this content.
A member of ownership is a licensed real estate agent.

24,000 SF Industrial Warehouse on 1.89 acres for Sale or Lease

FLOOR PLAN



©2025 Ackerman & Co. All rights reserved. While we have no reason to doubt the accuracy of the information provided from sources we deem reliable, we cannot guarantee it and therefore assume no liability for errors, omissions or changes to this content.
A member of ownership is a licensed real estate agent.

1225 S. Main Street

24,000 SF Industrial Warehouse on 1.89 acres for Sale or Lease

Conyers, Georgia 30012
Rockdale County

PROPERTY PHOTOS



CHRIS MILLER
770.913.3989 | cmiller@ackermanco.net
www.ackermanco.com

DAVIS MORELAND
770.913.3919 | dmoreland@ackermanco.net

Ackerman & Co.

©2025 Ackerman & Co. All rights reserved. While we have no reason to doubt the accuracy of the information provided from sources we deem reliable, we cannot guarantee it and therefore assume no liability for errors, omissions or changes to this content.
A member of ownership is a licensed real estate agent.