

# RIDGE COMMERCE CENTER

1227-1245 S BINION ROAD | APOPKA, FL 32703



2,500 SF to 25,000 SF  
SMALL BAY WAREHOUSE



S. BINION ROAD

BOY SCOUT ROAD

**DELIVERY: APRIL 2026**

DEVELOPED BY:



**CENTERLINE**  
CAPITAL ADVISORS

LEASING BY:



**Ryan Griffith**  
Senior Vice President/Principal  
908.208.4774  
rgriffith@lee-associates.com

**Charles W. Duvall**  
Senior Associate  
321.243.0857  
cduvall@lee-associates.com

We obtained the information above from sources we believe to be reliable. However, we have not verified its accuracy and make no guarantee, warranty or representation about it. It is submitted subject to the possibility of errors, omissions change of price, rental or other conditions, prior sale, lease or financing, or withdrawal without notice. We include projections, opinions, assumptions, or estimates for example only, and they may not represent current or future performance of the property. You and your tax and legal advisors should conduct your own investigation of the property and transaction.



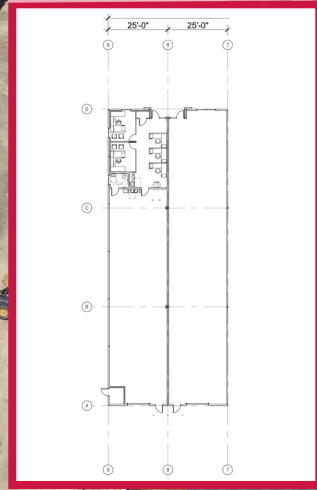
CONSTRUCTION FOR FUTURE SR 429/BINION ROAD  
INTERCHANGE  
BEGINS EARLY 2026

RIDGE COMMERCE  
CENTER



S. BINION ROAD

BOY SCOUT ROAD



LEASE RATES STARTING AT: \$5,208/MTH





441

JACKSONVILLE, FLORIDA  
145 MILES | 2 HOURS



TOLL  
429

INTERSTATE  
4

436

#### DISTANCES

TO INTERSTATE 4	→	11 MILES
TO FL TURNPIKE	→	9.2 MILES
TO STATE ROAD 408	→	11.8 MILES

414

441

436

50

TOLL  
429

INTERSTATE  
4

TOLL  
408

50



MIAMI, FLORIDA  
246 MILES | 3 HOURS 45 MINUTES

TAMPA, FLORIDA  
92.1 MILES | 1 HOUR 27 MINUTES



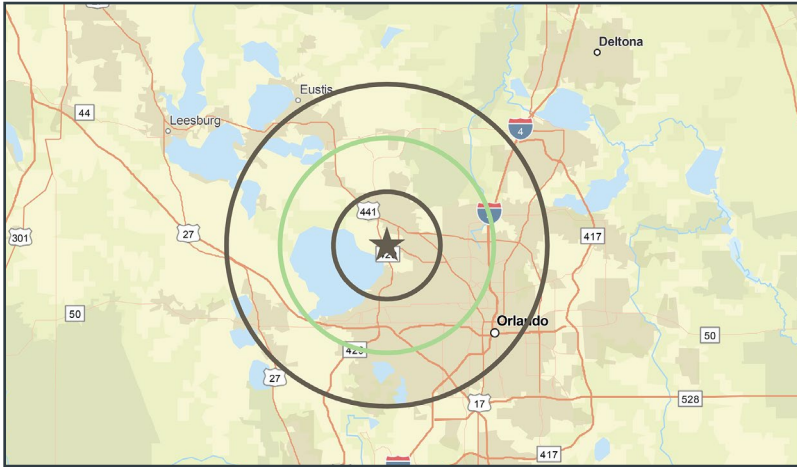
56.4 MILES TO INTERSTATE 95  
61.2 MILES TO DAYTONA BEACH

RIDGE COMMERCE CENTER

91.9 MILES TO TAMPA

31.7 MILES TO KENNEDY SPACE CENTER  
73.4 MILES TO PORT CANAVERAL

# DEMOGRAPHICS



## DRIVE TIME TO MAJOR CITIES

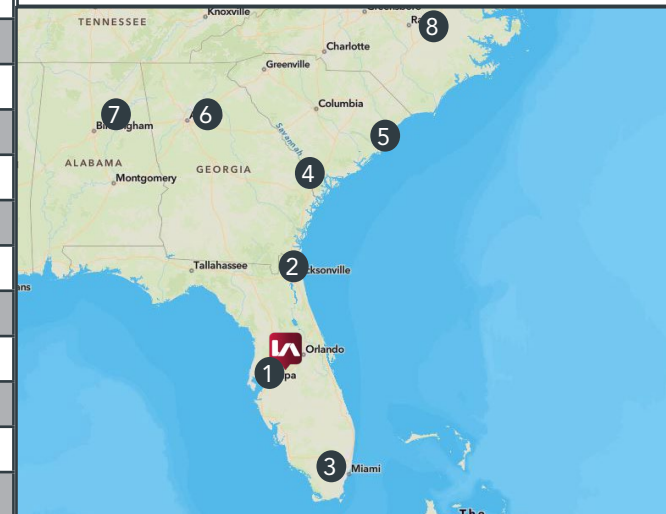
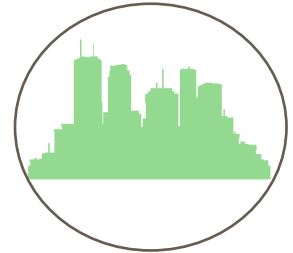
	City	Time	Miles
1	Tampa, Florida	1 Hour 27 Min	91.9 Miles
2	Jacksonville, Florida	2 Hours 09 min	145 Miles
3	Miami, Florida	3 Hours 45 Min	246 Miles
4	Savannah, Georgia	4 Hours 13 Min	290 Miles
5	Charleston, South Carolina	5 Hours 58 Min	389 Miles
6	Atlanta, Georgia	6 Hours 6 Min	429 Miles
7	Birmingham, Alabama	8 Hours 16 Min	575 Miles
8	Raleigh, North Carolina	8 Hours 39 Min	605 Miles

## POPULATION & INCOME

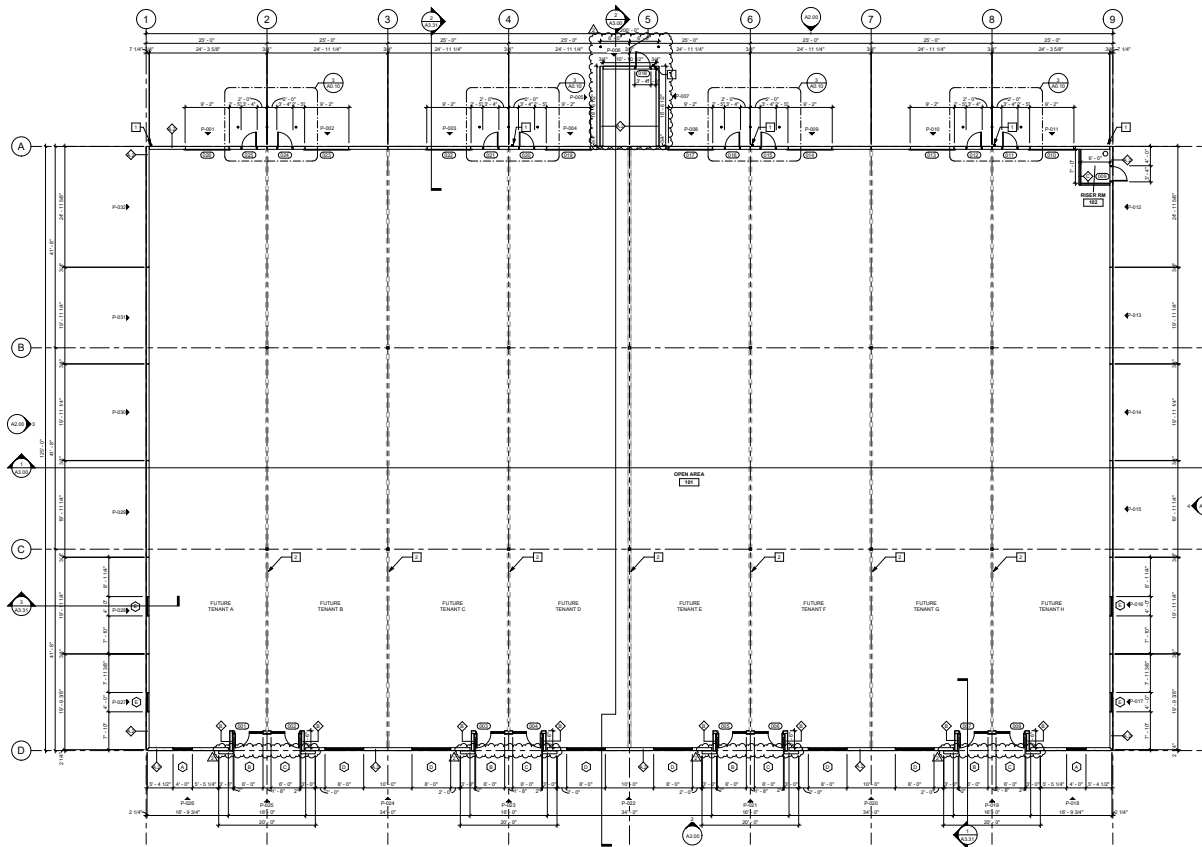
Demographics	5 Mile	10 Mile	15 Mile
Population 2023	111,292	463,462	1,142,753
Population 2028 (Est)	116,255	471,172	1,175,974
Households 2023	37,679	167,936	441,100
Households 2028	39,733	172,506	458,224
Males 2023	54,682	225,067	559,635
Males 2028	56,996	228,127	573,218
Females 2023	56,610	238,395	583,118
Females 2028	59,259	243,045	602,756
Med Household Income 23'	\$72,448	\$65,219	\$69,723
Med Household Income 28'	\$83,308	\$76,937	\$80,316
Avg Household Income 23'	\$95,698	\$94,550	\$103,847
Avg Household Income 28'	\$113,233	\$110,378	\$119,186
White Population	44,880	192,659	567,641
Black Population	30,975	139,572	253,616
Asian Population	4,077	19,073	53,132
Hispanic Origin	33,089	112,984	264,377

## AGE & EDUCATION

Demographics	5 Mile	10 Mile	15 Mile
Age 20-24 2023	6.7%	4.8%	5.35
Age 20-24 2028	4.4%	4.5%	4.9%
Age 25-34 2023	11.1%	11.5%	13.4%
Age 25-34 2028	13.6%	11.7%	12.8%
Age 35-44 2023	11.7%	13.2%	13.3%
Age 35-44 2028	10.5%	12.2%	13.6%
Age 45-54 2023	11.4%	12.6%	12.7%
Age 45-54 2028	10.5%	12.2%	12.3%
No Diploma	7.1%	6.7%	5.1%
H.S. Graduate (25+)	24.1%	22.6%	20.1%
GED (25+)	4.5%	4.4%	3.9%
Some College, No Degree	19.0%	17.5%	16.8%
Associates Degree (25+)	11.0%	12.4%	12.3%
Bachelors Degree (25+)	19.7%	21.8%	24.7%
Graduate/Prof Degree (25+)	9.6%	10.3%	14.0%
Total Education Attainment	75,247	316,942	802,396



# BUILDING 1 | 1227 S. BINION ROAD



## BUILDING SIZE:

25,000 SF

## LOADING:

Grade Level

## DIMENSIONS:

125" deep x 200' long

## CLEAR HEIGHT:

20' to bottom of structure

## TRUCK COURT:

48.5' deep

## CAR PARKING SPACES:

33 Car Spaces

## CONCRETE SLAB-ON-GRADE

4" thick slab on grade

## COLUMN SPACING:

All Bays: 25' x 41'-8"

## STRUCTURAL STEEL

Gray tube steel columns, galvanized roof deck and gray joist/girders

## ROOFING:

Mechanically attached 60 mil. Reinforced TPO single-ply membrane with R-30 Insulation

## DRIVE IN DOORS:

Eight (8) 9' by 12' overhead doors

## PAINT:

Exterior textured paint with accent

## FIRE PROTECTION:

Wet fire system

## HVAC

One vent hood per bay

## ELECTRIC SERVICE:

Total building has a 2,000 amp main service. Speculative office provides 200 amp service.

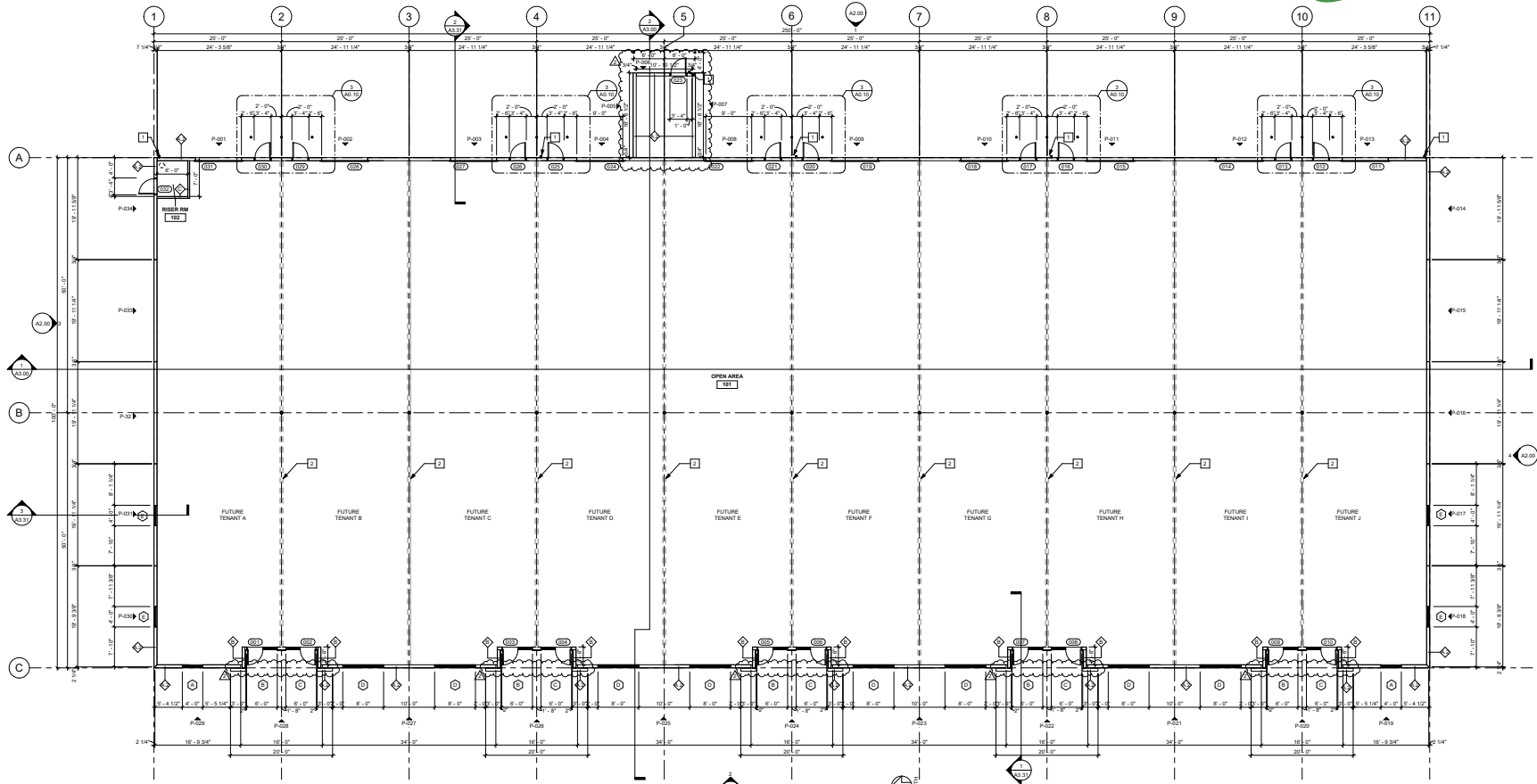
## ELECTRICAL LIGHTING

Two (2) LED high bay lights per bay  
Sixteen (16) total

## SITE LIGHTING:

LED building and pole site lighting

# BUILDING 2 | 1245 S. BINION ROAD



## BUILDING SIZE:

25,000 SF

## LOADING:

Grade Level

## DIMENSIONS:

100" deep x 250' long

## CLEAR HEIGHT:

20' to bottom of structure

## TRUCK COURT:

74' deep (shared)

## CAR PARKING SPACES:

43 Car Spaces

## CONCRETE SLAB-ON-GRADE

4" thick slab on grade

## COLUMN SPACING:

All Bays: 25' x 50'

## STRUCTURAL STEEL

Gray tube steel columns, galvanized roof deck and gray joist/girders

## ROOFING:

Mechanically attached 60 mil. Reinforced TPO single-ply membrane with R-30 Insulation

## DRIVE IN DOORS:

Ten (10) 9' by 12' overhead doors

## PAINT:

Exterior textured paint with accent

## FIRE PROTECTION:

Wet fire system

## HVAC

One vent hood per bay

## ELECTRIC SERVICE:

Total building has a 2,000 amp main service. Speculative office provides 200 amp service.

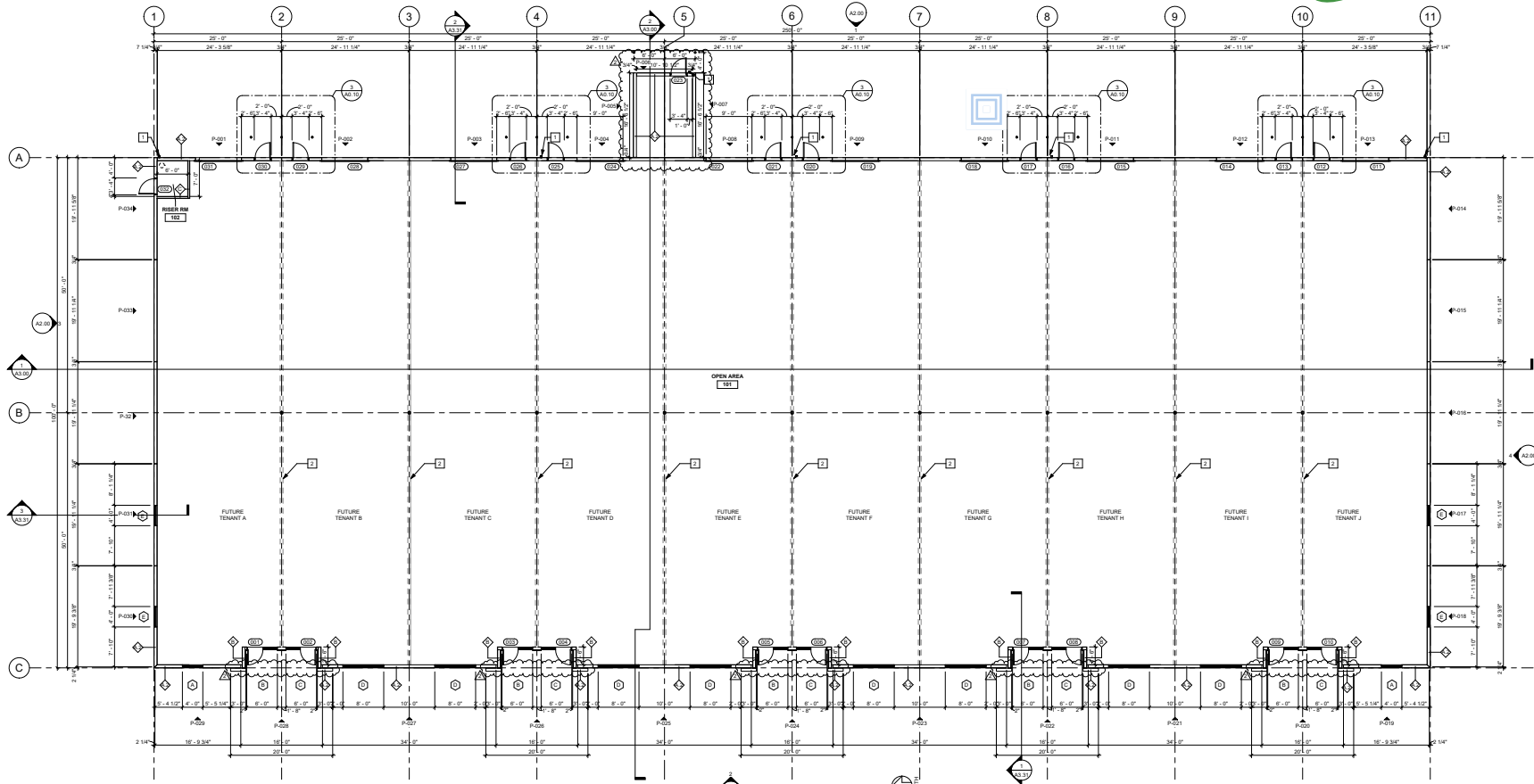
## ELECTRICAL LIGHTING

Two (2) LED high bay lights per bay  
Twenty (20) total

## SITE LIGHTING:

LED building and pole site lighting

# BUILDING 3 | 1239 S. BINION ROAD



## BUILDING SIZE:

25,000 SF

## LOADING:

Grade Level

## DIMENSIONS:

100" deep x 250' long

## CLEAR HEIGHT:

20' to bottom of structure

## TRUCK COURT:

74' deep (shared)

## CAR PARKING SPACES:

45 Car Spaces

## CONCRETE SLAB-ON-GRADE

4" thick slab on grade

## COLUMN SPACING:

All Bays: 25' x 50'

## STRUCTURAL STEEL

Gray tube steel columns, galvanized roof deck and gray joist/girders

## ROOFING:

Mechanically attached 60 mil. Reinforced TPO single-ply membrane with R-30 Insulation

## DRIVE IN DOORS:

Ten (10) 9' by 12' overhead doors

## PAINT:

Exterior textured paint with accent

## FIRE PROTECTION:

Wet fire system

## HVAC

One vent hood per bay

## ELECTRIC SERVICE:

Total building has a 2,000 amp main service. Speculative office provides 200 amp service.

## ELECTRICAL LIGHTING

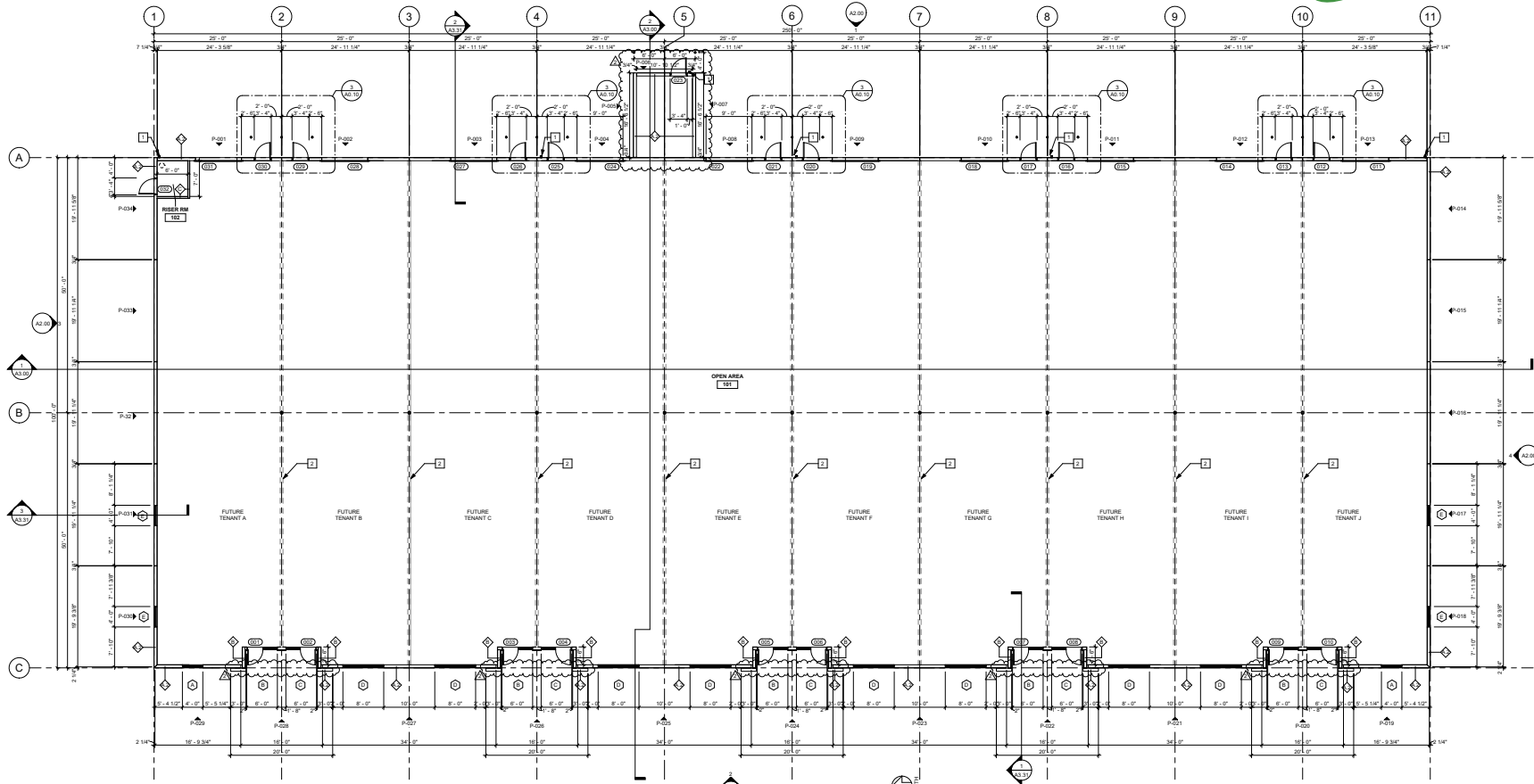
Two (2) LED high bay lights per bay  
Twenty (20) total

## SITE LIGHTING:

LED building and pole site lighting



# BUILDING 4 | 1233 S. BINION ROAD



## BUILDING SIZE:

25,000 SF

## LOADING:

Grade Level

## DIMENSIONS:

100" deep x 250' long

## CLEAR HEIGHT:

20' to bottom of structure

## TRUCK COURT:

48.5' deep

## CAR PARKING SPACES:

45 Car Spaces

## CONCRETE SLAB-ON-GRADE

4" thick slab on grade

## COLUMN SPACING:

All Bays: 25' x 50'

## STRUCTURAL STEEL

Gray tube steel columns, galvanized roof deck and gray joist/girders

## ROOFING:

Mechanically attached 60 mil. Reinforced TPO single-ply membrane with R-30 Insulation

## DRIVE IN DOORS:

Ten (10) 9' by 12' overhead doors

## PAINT:

Exterior textured paint with accent

## FIRE PROTECTION:

Wet fire system

## HVAC

One vent hood per bay

## ELECTRIC SERVICE:

Total building has a 2,000 amp main service. Speculative office provides 200 amp service.

## ELECTRICAL LIGHTING

Two (2) LED high bay lights per bay  
Twenty (20) total

## SITE LIGHTING:

LED building and pole site lighting



# SPEC OFFICE | 771 SF

