



# 901 Shasta Street

Redwood City, California



## PROPERTY OVERVIEW

**Inventor Manufacturing Space  
/ R&D Minutes from Downtown**

### HIGHLIGHTS

- Available Space:  $\pm 23,000$  SF  
 $\pm 15,000$  SF Downstairs  
 $\pm 8,000$  SF Upstairs Office/Storage
- 2 Oversized Rollups + 1 Dock High
- High Ceilings
- Potential for Cold Storage Room
- 2 Kitchenettes
- Industrial Loft
- Flex Space for Bull Pen, Training Room or Office
- Conference Rooms
- Outdoor Eating Area
- Polished Concrete Flooring
- Well Lit with Lighting and Skylights
- Fire Sprinklers
- Secured Building
- Potential for Caltrain Signage
- Easy Access to Hwy 101, 280, Woodside Rd. and El Camino Real
- Close to Downtown, Dining and Shops
- CalTrain and Public Transportation Nearby

### POTENTIAL USES

- Office
- Warehouse
- R&D

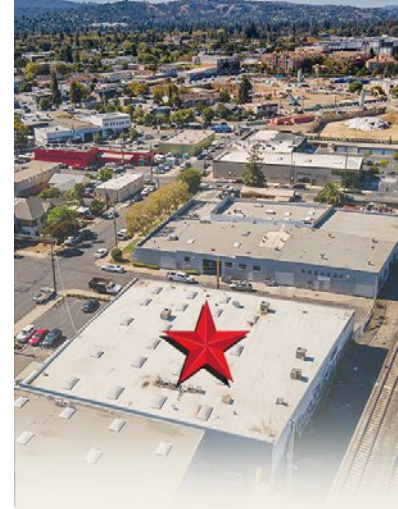
### LEASE TERMS

- \$1.75 PSF NNN



FOR LEASE → ±23,000 TECH OFFICE / R&D MINUTES FROM DOWNTOWN

## 901 Shasta Street, Redwood City



### CONTACT US

**Anthony Kamm**

ak@seq-rs.com

650.888.3858

CAL DRE LIC NO. 01783456

**Ryan Pegnim**

rcp@seq-rs.com

650.346.9820

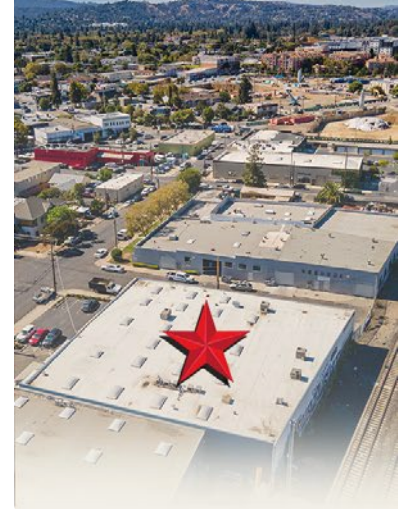
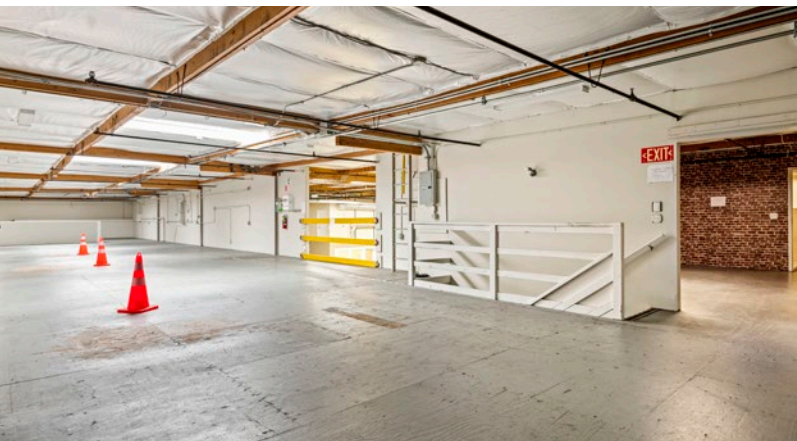
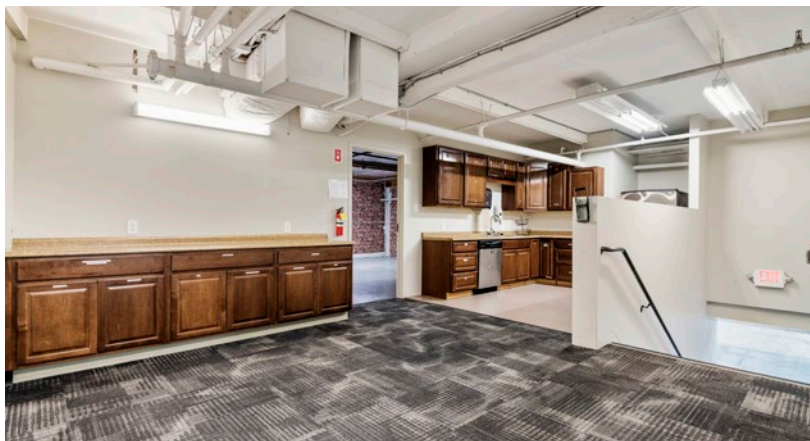
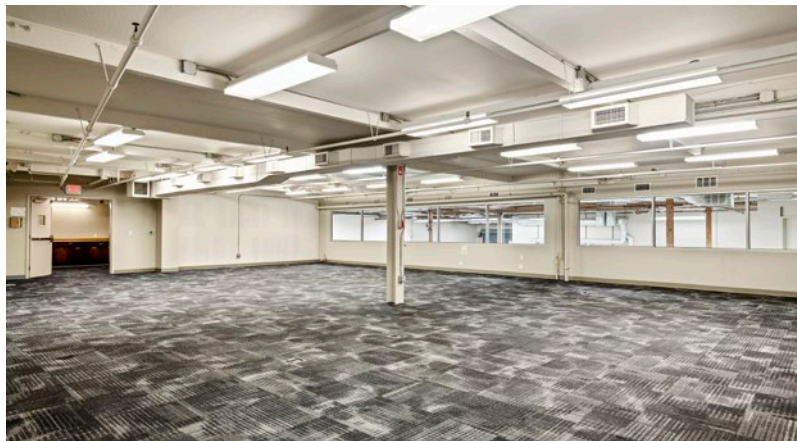
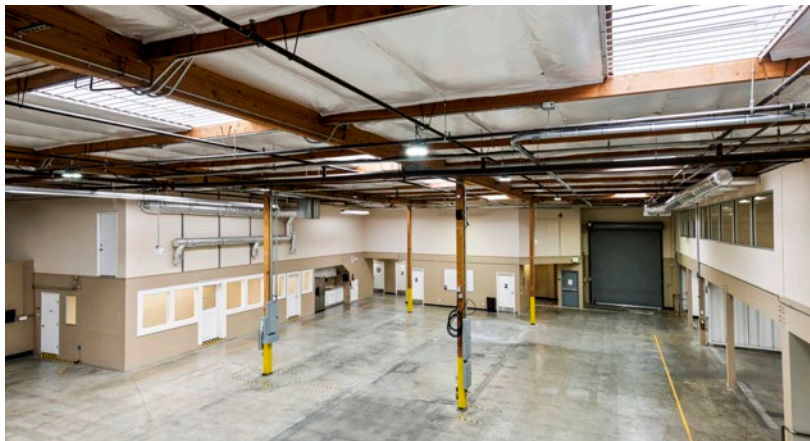
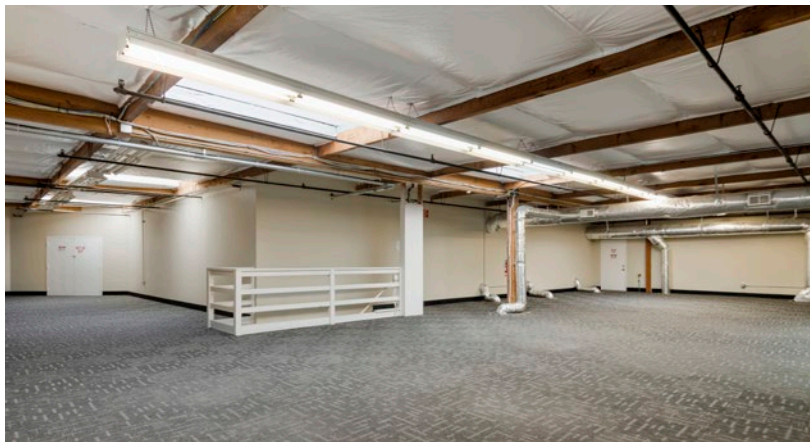
CAL DRE LIC NO. 01478696





FOR LEASE → ±23,000 TECH OFFICE / R&D MINUTES FROM DOWNTOWN

## 901 Shasta Street, Redwood City



### CONTACT US

**Anthony Kamm**

ak@seq-rs.com

650.888.3858

CAL DRE LIC NO. 01783456

**Ryan Pegnim**

rcp@seq-rs.com

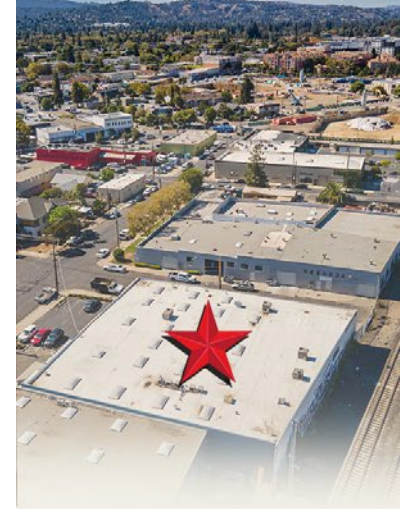
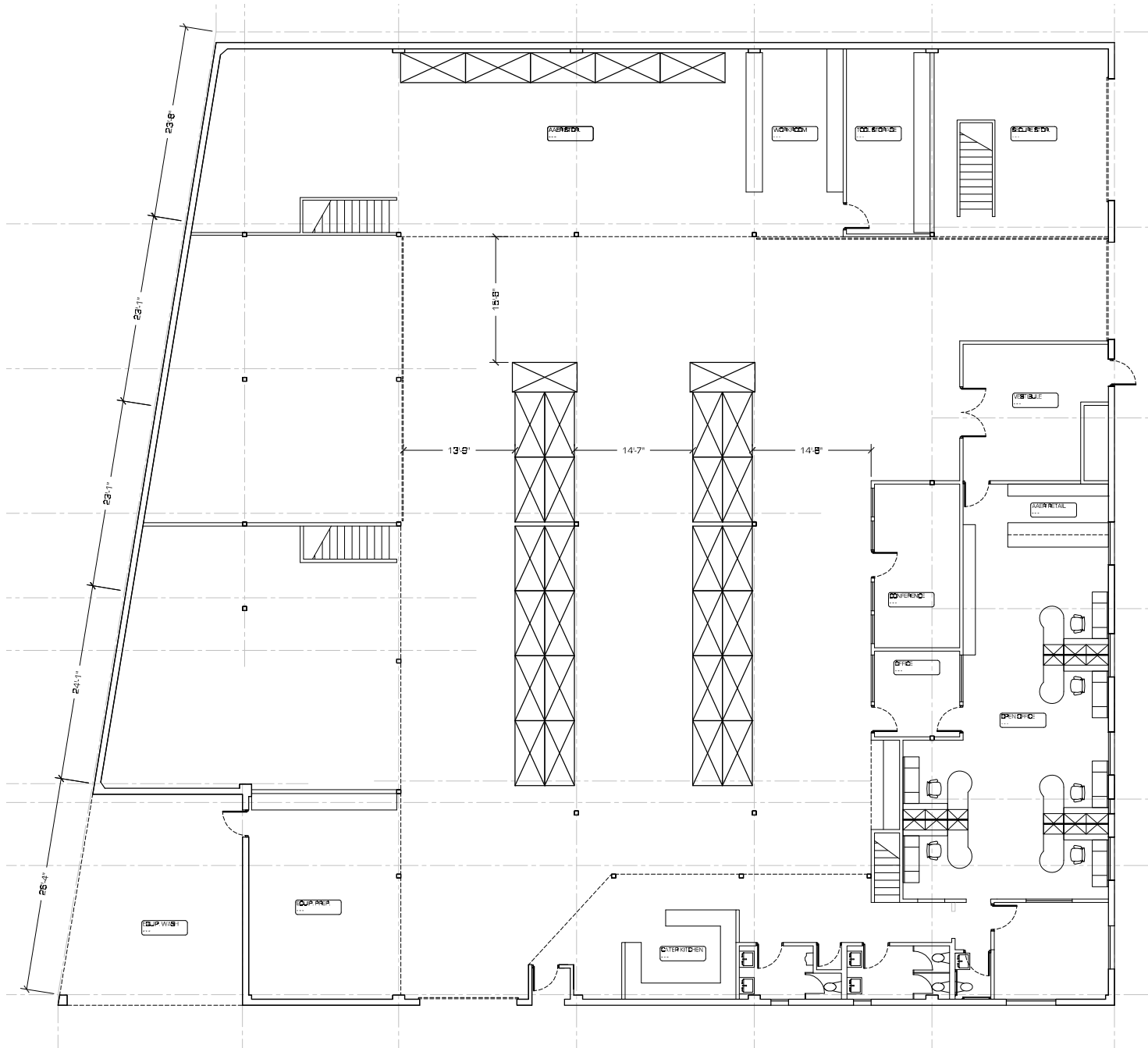
650.346.9820

CAL DRE LIC NO. 01478696





**901 Shasta Street, Redwood City**



**Anthony Kamm**

**Ryan Pegnim**  
rcp@seq-rs.com  
650.346.9820  
CAL DRE LIC NO. 01478696

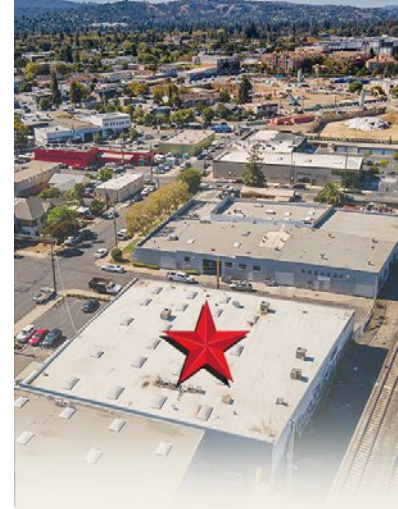
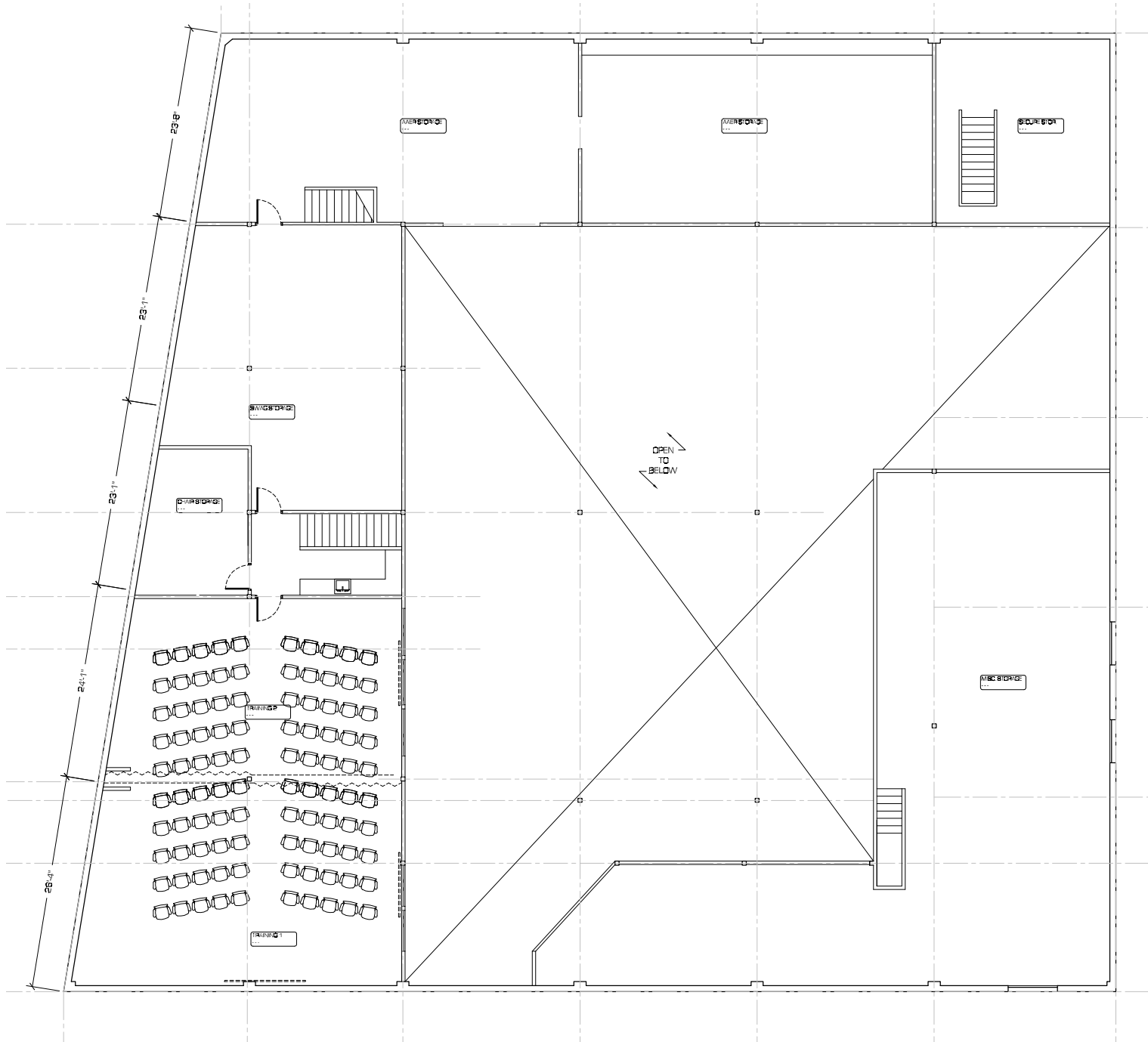


## FLOOR PLAN



FOR LEASE → ±23,000 TECH OFFICE / R&D MINUTES FROM DOWNTOWN

## 901 Shasta Street, Redwood City



### CONTACT US

**Anthony Kamm**

ak@seq-rs.com

650.888.3858

CAL DRE LIC NO. 01783456

**Ryan Pegnim**

rcp@seq-rs.com

650.346.9820

CAL DRE LIC NO. 01478696



MEZZANINE



FOR LEASE → ±23,000 TECH OFFICE / R&D MINUTES FROM DOWNTOWN



## 901 Shasta Street, Redwood City

**REDWOOD CITY** is a city in San Mateo County, California on the San Francisco Peninsula, about halfway between San Francisco and San Jose. Redwood City is probably best known for its downtown. It also has great historic buildings mixed with a variety of restaurants, public open space and transportation options.

<b>24 MI</b>	<b>35 MI</b>	<b>24 MI</b>
<b>SOUTH OF SAN FRANCISCO</b>	<b>SOUTHWEST OF OAKLAND</b>	<b>NORTH OF SAN JOSE</b>

<b>CalTrain Sequoia Station</b>	<b>Time</b>
---------------------------------	-------------

From Palo Alto to RWC	7 min
RWC to San Francisco	31 min
RWC to San Jose	27 min

<b>Airports</b>	<b>Drive</b>	<b>Distance</b>
-----------------	--------------	-----------------

San Francisco (SFO)	20 min	14 mi
San Jose (SJC)	30 min	22 mi
Oakland (OAK)	20 min	17 mi

