



11621 MARKON DR

GARDEN GROVE, CA

FOR LEASE

±14,013 SF FREESTANDING
INDUSTRIAL FACILITY



PROPERTY HIGHLIGHTS:

- ±2,000 SF Newly Constructed High-Image Office Area
- 4 GL Truck Doors
- 16' Clear Height
- Fire Sprinklered
- 800 Amps, 277/480 Volt Distributed Power
- Fenced Parking/Yard & Drive Around Building
- 4 Restrooms (2 Office / 2 Shop)
- Expandable to ±27,545 SF

CONTACT

Greg Diab, CCIM

Principal | Lee & Associates - Orange

714-564-7171

DRE# 01098015

gdiab@lee-associates.com

Jack Haley, CCIM

Principal | Lee & Associates - Orange

714-564-7172

DRE# 01064859

jhaley@lee-associates.com



All information contained herein has been provided by Seller/Lessor and/or third parties, but has not been independently verified by Lee & Associates or its agent(s). Buyer/Lessee and interested parties should independently verify all information communicated by these sources.

11621 MARKON DR

GARDEN GROVE, CA

FOR LEASE

±14,013 SF INDUSTRIAL BUILDING

PHOTOS



CONTACT

Greg Diab, CCIM

Principal | Lee & Associates - Orange

714-564-7171

DRE# 01098015

gdiab@lee-associates.com

Jack Haley, CCIM

Principal | Lee & Associates - Orange

714-564-7172

DRE# 01064859

jhaley@lee-associates.com

LEE & ASSOCIATES
COMMERCIAL REAL ESTATE SERVICES

All information contained herein has been provided by Seller/Lessor and/or third parties, but has not been independently verified by Lee & Associates or its agent(s). Buyer/Lessee and interested parties should independently verify all information communicated by these sources.

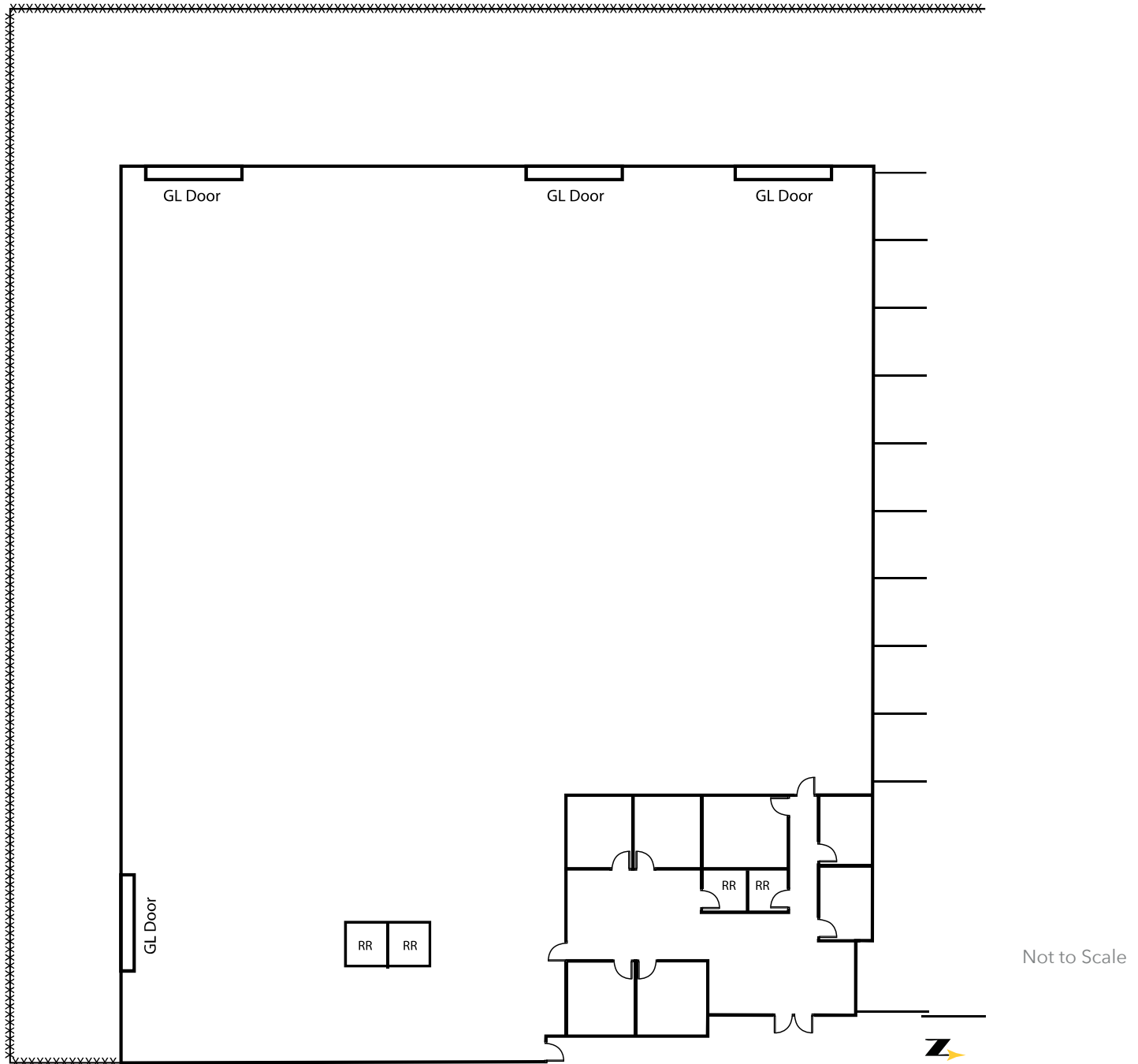
11621 MARKON DR

FOR LEASE

GARDEN GROVE, CA

±14,013 SF INDUSTRIAL BUILDING

FLOOR PLAN



CONTACT

Greg Diab, CCIM

Principal | Lee & Associates - Orange

714-564-7171

DRE# 01098015

gdiab@lee-associates.com

Jack Haley, CCIM

Principal | Lee & Associates - Orange

714-564-7172

DRE# 01064859

jhaley@lee-associates.com

LEE & ASSOCIATES
COMMERCIAL REAL ESTATE SERVICES

All information contained herein has been provided by Seller/Lessor and/or third parties, but has not been independently verified by Lee & Associates or its agent(s). Buyer/Lessee and interested parties should independently verify all information communicated by these sources.