



8180 S 700 E

Sandy, UT 84070

PROPERTY DESCRIPTION:

- Premium 2nd Floor Office Condo in Prime Sandy Location
- Easy Access to I-15, Major Commuter Routes, and TRAX
- Features Class-A Finishes Throughout
- Building is Professionally Maintained and Operated by an HOA
- Strong Opportunity for Businesses Seeking Long-Term Stability and Value
- *Please DO NOT DISTURB Tenant

SALE PRICE:

\$2,351,050

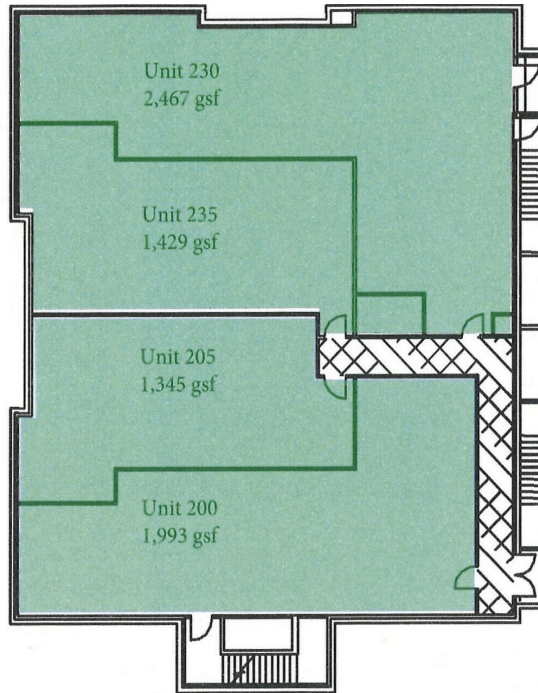
PROPERTY DETAILS:

7,234 SF

BROOK HINTZE

801.860.1515
brook@iproperties.com

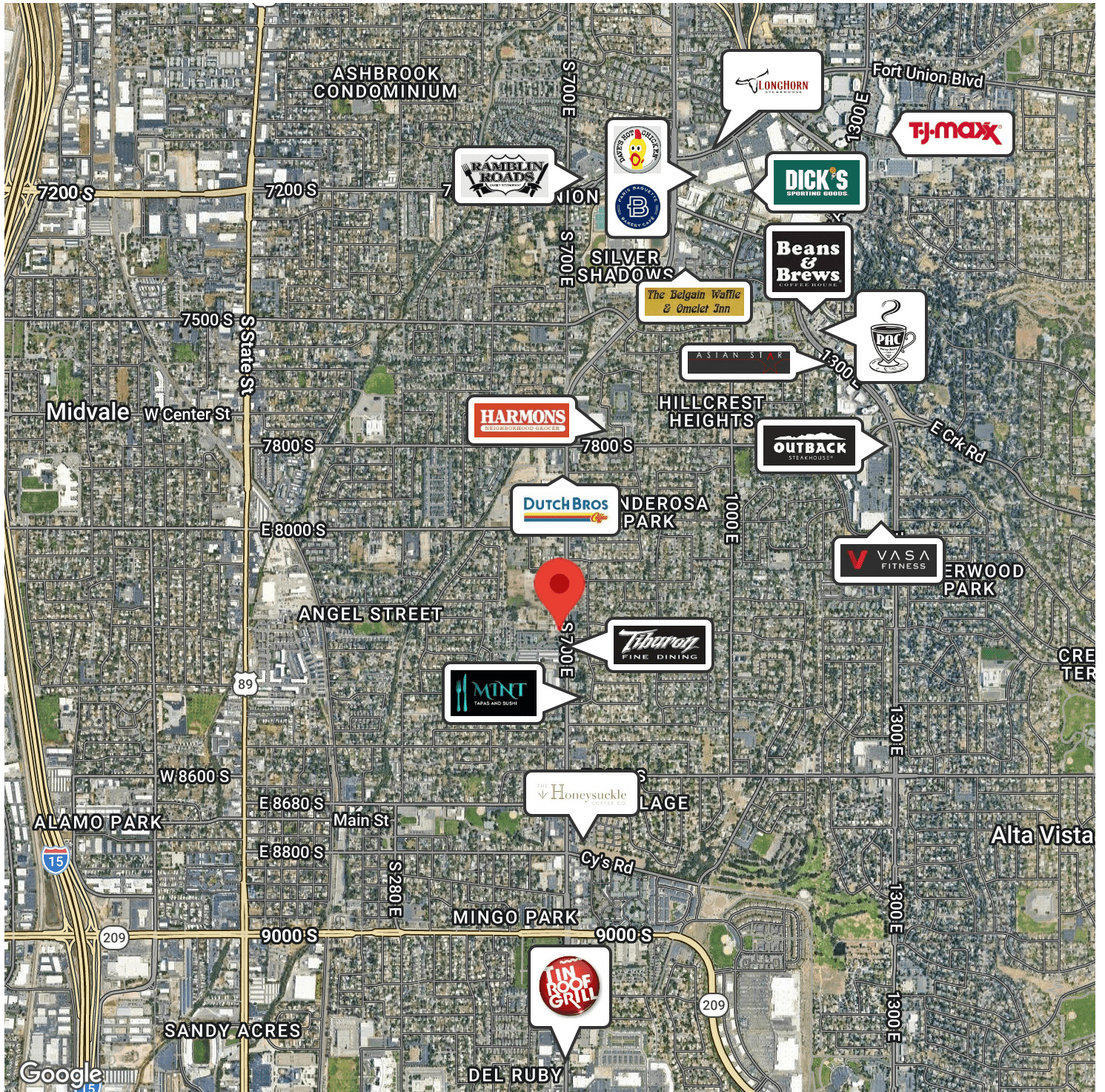
51 East 400 South Suite 210
Salt Lake City, UT 84111
801.355.0600 | iproperties.com



PROPERTY DESCRIPTION

This premium office condo offers a rare opportunity for small business owners to own their workspace instead of continuing to lease. Designed with Class A finishes throughout, the property provides a polished, professional environment ideal for elevating your business presence. The building is professionally maintained and operated by an HOA, creating a streamlined ownership experience with lower operating costs and reduced management responsibilities compared to traditional leased office space. Combining ownership benefits, high-end finishes, and efficient building management, this property is an exceptional opportunity for businesses seeking long-term value and stability.





BROOK HINTZE
801.860.1515
brook@iproperties.com

51 East 400 South Suite 210
Salt Lake City, UT 84111
801.355.0600 | iproperties.com