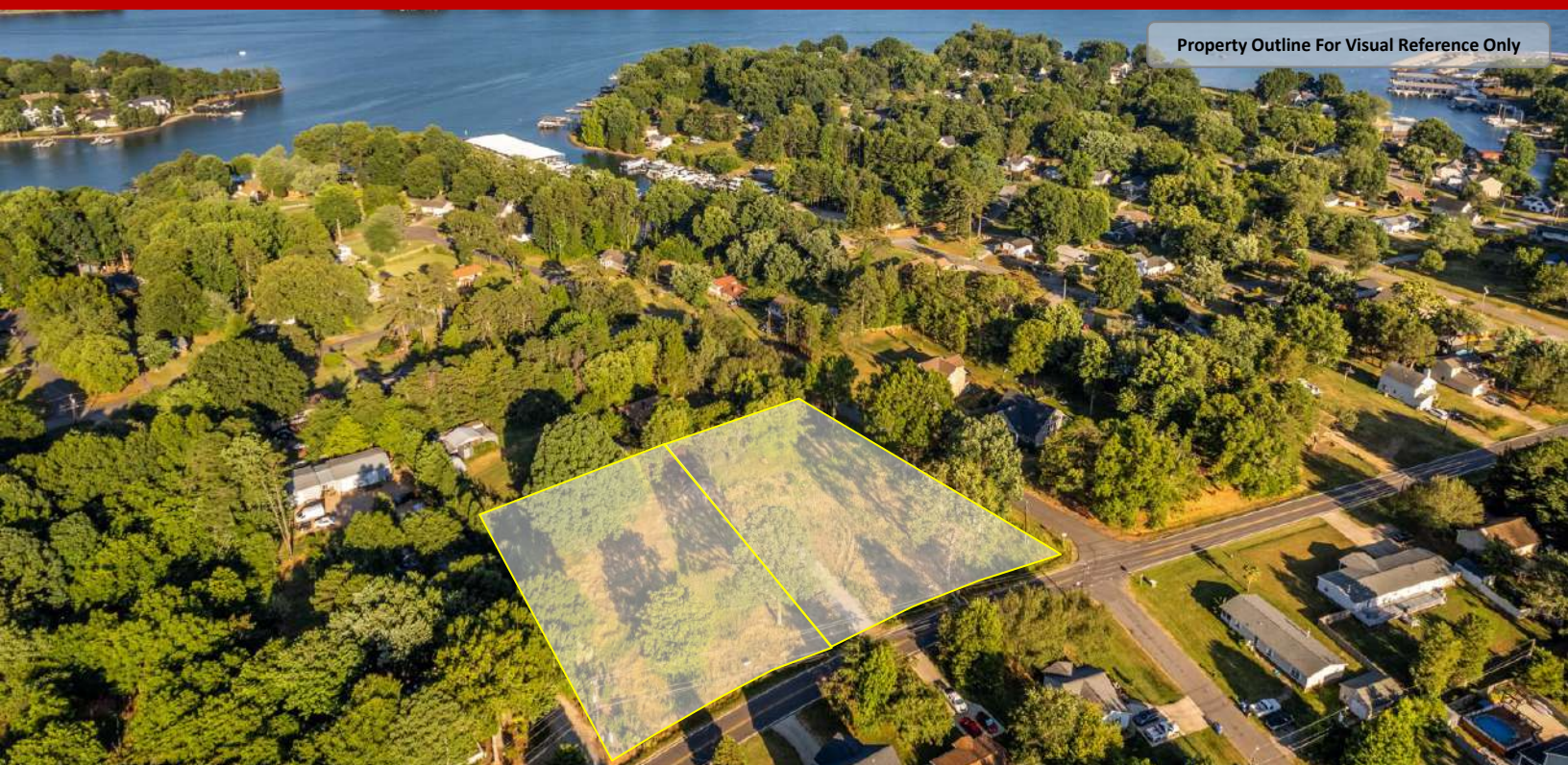


405 & 411 Stutts Rd, Mooresville NC

Luxury Barndominium Lots



Property Outline For Visual Reference Only



For Sale \$250,000 Each

Brawley School Road Area

Two Lots available in the Brawley School Road area for building your Barndominium. Beautiful flat Lots near Lake Norman are conveniently located in Mooresville. Both Lots have been cleared, graded, and ready to build!

Custom design your building or use one of the plans already designed specifically for these Lots!

Custom built Barndominium homes by Spivey Construction Co. Inc, combines the flexibility of Luxury Living and Large Premium Garage areas to accommodate motorhomes, boats, cars, ATV's & hobby shops.

Lewis Spivey

Broker

704.363.1401 Cell

LSpivey@EquityCP.com



Equity Commercial Properties

114 Morlake Dr.
Suite 104
Mooresville, NC 28117

Office 704-799-9202
EquityCP.com

411 Stutts Rd

Mooreville, NC

EquityCP.com



Property Details

Price:	\$250,000
Lot Size:	+/- 0.69 Acres
Building:	Barndominium Lot
Zoning:	Residential
Water/Sewer:	Well/Septic
Interstate:	I-77 Exit 35
Nearby Amenities:	Lake Norman/Retail



Use this 1-bedroom Barndominium plan or custom design your own to fit your needs and lifestyle!



Equity Commercial Properties

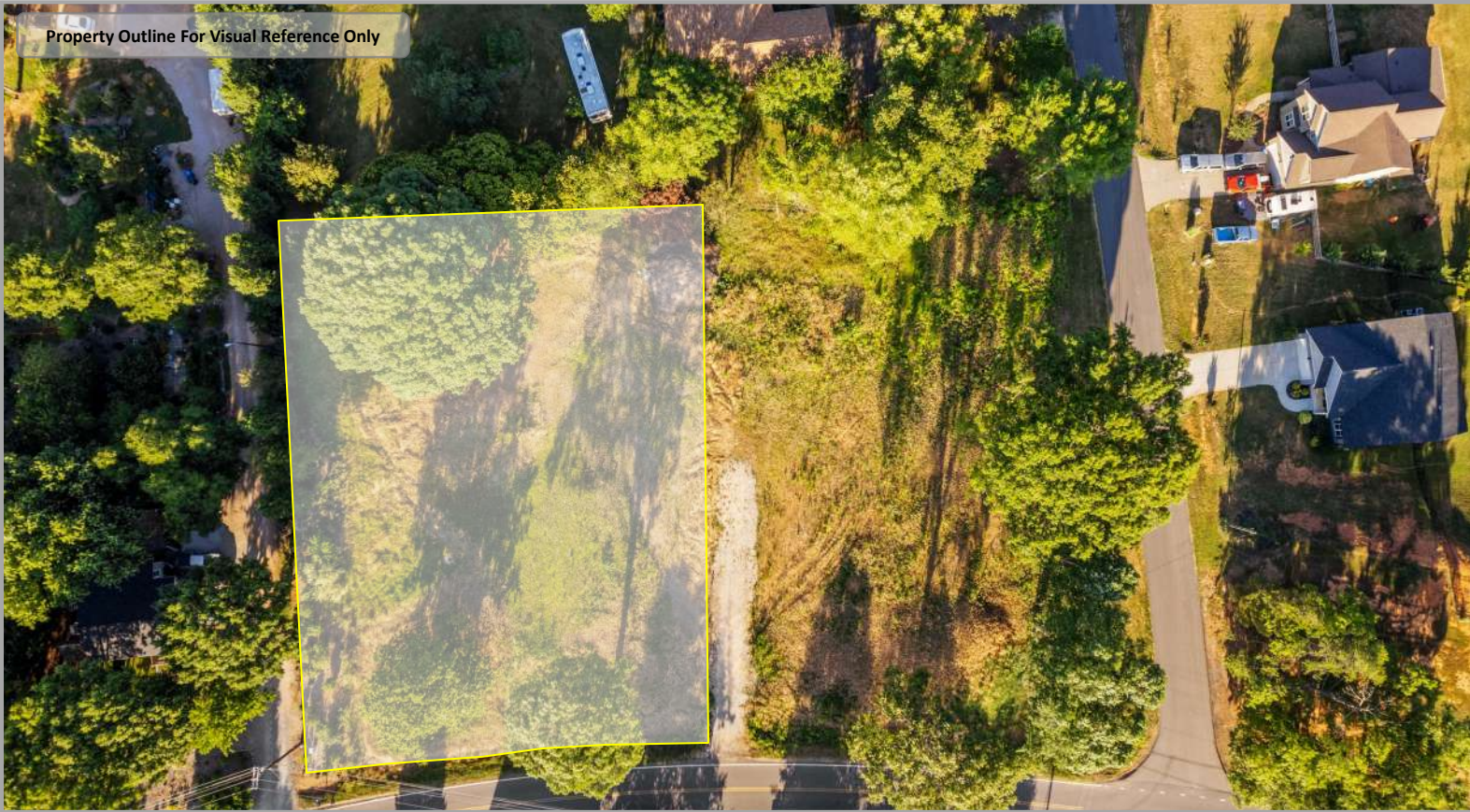
114 Morlake Dr.
Suite 104
Mooreville, NC 28117

Office 704-799-9202
EquityCP.com

405 Stutts Rd

Mooreville, NC

EquityCP.com



Property Details

Price:	\$250,000
Lot Size:	+/- 0.69 Acres
Building:	Barndominium Lot
Zoning:	Residential
Water/Sewer:	Well/Septic
Interstate:	I-77 Exit 35
Nearby Amenities:	Lake Norman/Retail



Use this 2-bedroom Barndominium plan or custom design your own to fit your needs and lifestyle!

Barndominiums Built By Spivey Construction Co. Inc. in Mooresville

