



# SOUTH PARK GROUP

[www.southparkgroup.com](http://www.southparkgroup.com)



## FOR LEASE

### CREATIVE OFFICE

303 N. Sweetzer Avenue, Suite 200  
Los Angeles, California 90048

Signalized intersection at the Northwest corner of Beverly Blvd. and Sweetzer Avenue. Finishes include exposed steel beams and concrete floors. Located a few blocks from the Beverly Center, Beverly Connection and Cedar Sinai Medical Center.

#### AVAILABLE SPACE

**Size:** Approximately 2,475 rentable sqft

**Rate:** \$3.95 per sqft, Modified Gross

#### DAVID RAVANSHENAS

Tel. 323.782.1205

E. [david@southparkgroup.com](mailto:david@southparkgroup.com)

No. 01869082

#### JACK RAVAN

Tel. 323.782.1270

E. [jackravan@southparkgroup.com](mailto:jackravan@southparkgroup.com)

No. 00890189

SOUTH PARK GROUP | 8322 Beverly Blvd., Suite 301 | Los Angeles, CA 90048

This information has been furnished by sources that we deem reliable, but for which we assume no liability. The information contained herein is given, in confidence, with the understanding that all negotiations pertaining to this property be handled through the submitting office. All measurements are approximate.

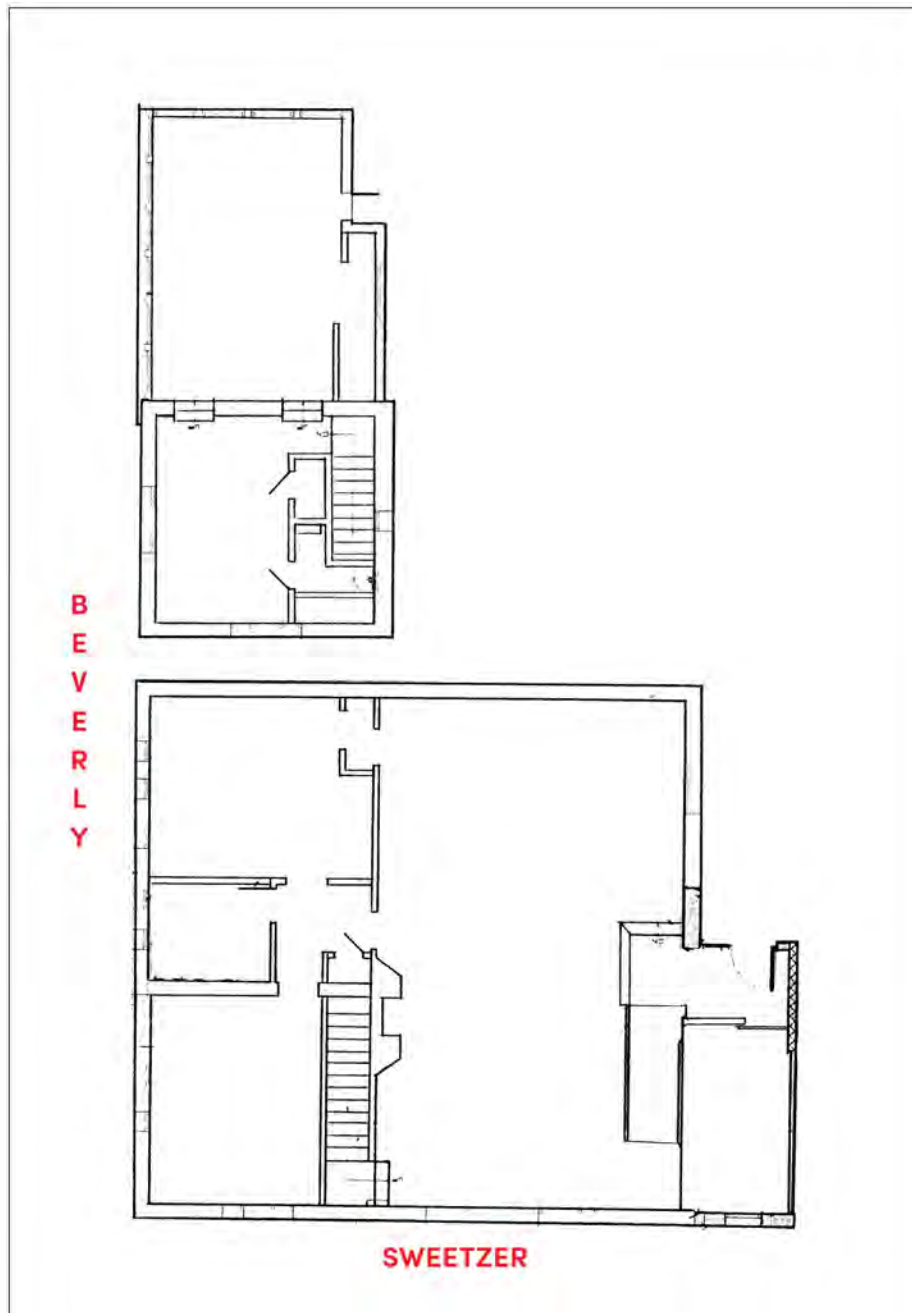


# SOUTH PARK GROUP

[www.southparkgroup.com](http://www.southparkgroup.com)

## FLOOR PLAN

303 N. Sweetzer Ave., Suite 200, Los Angeles, California 90048



Not Drawn to Scale

**SOUTH PARK GROUP | 8322 Beverly Blvd., Suite 301 | Los Angeles, CA 90048**

This information has been furnished by sources that we deem reliable, but for which we assume no liability. The information contained herein is given, in confidence, with the understanding that all negotiations pertaining to this property be handled through the submitting office. All measurements are approximate.

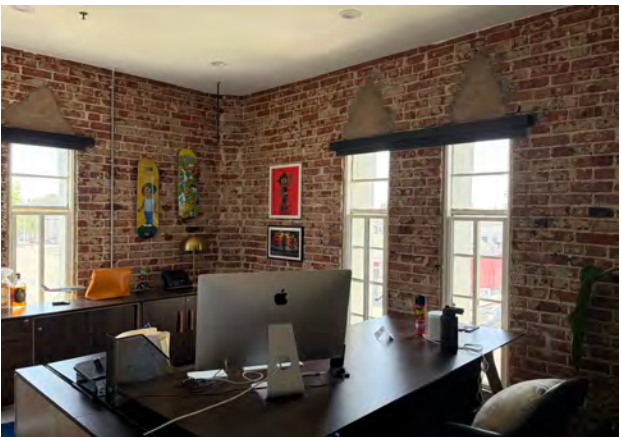
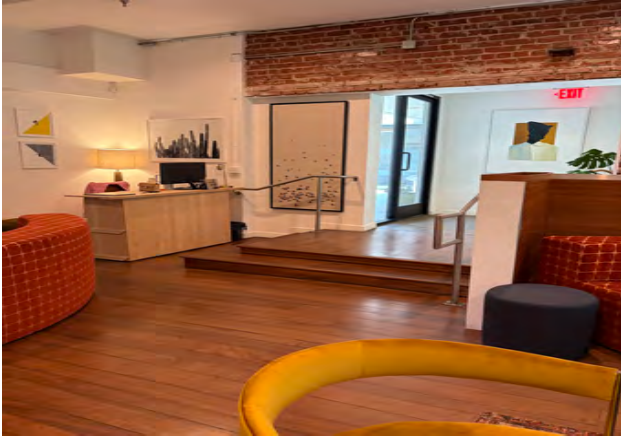


# SOUTH PARK GROUP

[www.southparkgroup.com](http://www.southparkgroup.com)

## INTERIOR

303 N. Sweetzer Ave., Suite 200 Los Angeles, California 90048



**SOUTH PARK GROUP | 8322 Beverly Blvd., Suite 301 | Los Angeles, CA 90048**

This information has been furnished by sources that we deem reliable, but for which we assume no liability. The information contained herein is given, in confidence, with the understanding that all negotiations pertaining to this property be handled through the submitting office. All measurements are approximate.