



FOR LEASE

Bolton Square Offices Starting at \$12.50/RSF!

LISTING PRESENTATION | 580 MAIN STREET | BOLTON, MA

Exclusively Listed by

Duncan Chapman - Director | (978) 621-1290 | duncan@kw.com | 147900, Massachusetts

Robert Jackson - Commercial Realtor | (781) 214-0192 | rjackson@kwcommercial.com | 9587133, Massachusetts

KW Commercial | North Central

670 Mechanic Street
Leominster, MA 01453

Each Office is Independently Owned and Operated

The calculations and data presented are deemed to be accurate, but not guaranteed. They are intended for the purpose of illustrative projections and analysis. The information provided is not intended to replace or serve as substitute for any legal, accounting, investment, real estate, tax or other professional advice, consultation or service. The user of this software should consult with a professional in the respective legal, accounting, tax or other professional area before making any decisions.

www.kwcommercial.com

Disclaimer



All materials and information received or derived from KW Commercial its directors, officers, agents, advisors, affiliates and/or any third party sources are provided without representation or warranty as to completeness, veracity, or accuracy, condition of the property, compliance or lack of compliance with applicable governmental requirements, developability or suitability, financial performance of the property, projected financial performance of the property for any party's intended use or any and all other matters.

Neither KW Commercial its directors, officers, agents, advisors, or affiliates makes any representation or warranty, express or implied, as to accuracy or completeness of the materials or information provided, derived, or received. Materials and information from any source, whether written or verbal, that may be furnished for review are not a substitute for a party's active conduct of its own due diligence to determine these and other matters of significance to such party. KW Commercial will not investigate or verify any such matters or conduct due diligence for a party unless otherwise agreed in writing.


EACH PARTY SHALL CONDUCT ITS OWN INDEPENDENT INVESTIGATION AND DUE DILIGENCE.

Any party contemplating or under contract or in escrow for a transaction is urged to verify all information and to conduct their own inspections and investigations including through appropriate third-party independent professionals selected by such party. All financial data should be verified by the party including by obtaining and reading applicable documents and reports and consulting appropriate independent professionals. KW Commercial makes no warranties and/or representations regarding the veracity, completeness, or relevance of any financial data or assumptions. KW Commercial does not serve as a financial advisor to any party regarding any proposed transaction.

All data and assumptions regarding financial performance, including that used for financial modeling purposes, may differ from actual data or performance. Any estimates of market rents and/or projected rents that may be provided to a party do not necessarily mean that rents can be established at or increased to that level. Parties must evaluate any applicable contractual and governmental limitations as well as market conditions, vacancy factors and other issues in order to determine rents from or for the property. Legal questions should be discussed by the party with an attorney. Tax questions should be discussed by the party with a certified public accountant or tax attorney. Title questions should be discussed by the party with a title officer or attorney. Questions regarding the condition of the property and whether the property complies with applicable governmental requirements should be discussed by the party with appropriate engineers, architects, contractors, other consultants, and governmental agencies. All properties and services are marketed by KW Commercial in compliance with all applicable fair housing and equal opportunity laws.

Exclusively Listed by


Duncan Chapman - Director

 (978) 621-1290

 duncan@kw.com

 147900, Massachusetts

Robert Jackson - Commercial Realtor

 (781) 214-0192

 rjackson@kwcommercial.com

 9587133, Massachusetts

The calculations and data presented are deemed to be accurate, but not guaranteed. They are intended for the purpose of illustrative projections and analysis. The information provided is not intended to replace or serve as substitute for any legal, accounting, investment, real estate, tax or other professional advice, consultation or service. The user of this software should consult with a professional in the respective legal, accounting, tax or other professional area before making any decisions.

Property Description



Bolton Square Offices - For Lease - Starting at

Bolton Square Offices - For Lease - Starting at \$12.50/RSF!

66,200 SF Office/Flex Building on ±6.5 Acres

Bolton Square Offices located at 580 Main Street in Bolton, Massachusetts is a prominent office/flex property offering with direct access to I-495 and Route 117. Set on approximately 6.5 acres, this three-story building features flexible space, characterized by a brick façade, expansive window lines with views of wooded areas and ponds, and an inviting interior courtyard.

This accommodating office property has great amenities and tenant common areas, creating a fresh, contemporary environment for businesses and their employees. Among the new amenities is a modern, on-site gym exclusively for tenants, supporting health and wellness in the workplace. Spacious exterior green spaces offer attractive options for outdoor gatherings, relaxation, and events.

The building features a variety of office suites on the first and second floors that can be combined or reconfigured to suit individual business requirements, while the lower level offers additional flex or lab space. Loading docks and elevators facilitate business operations throughout the property.

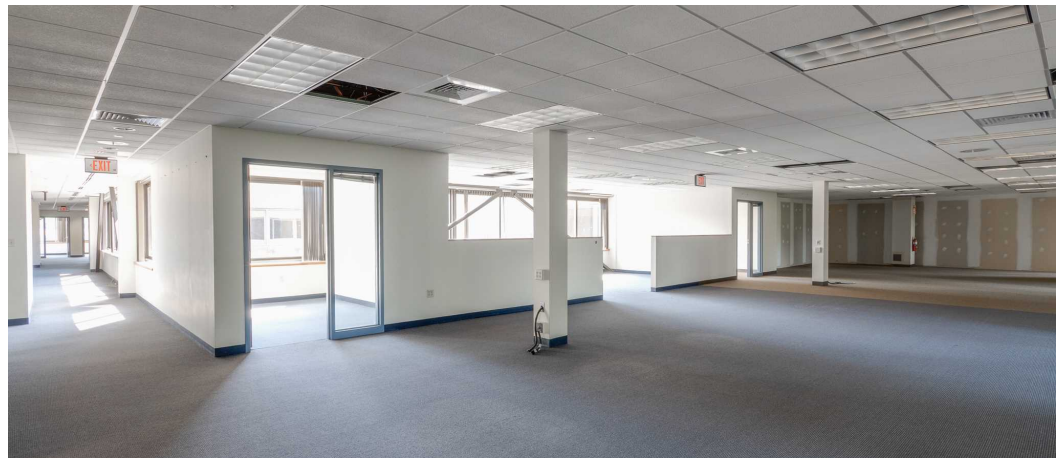
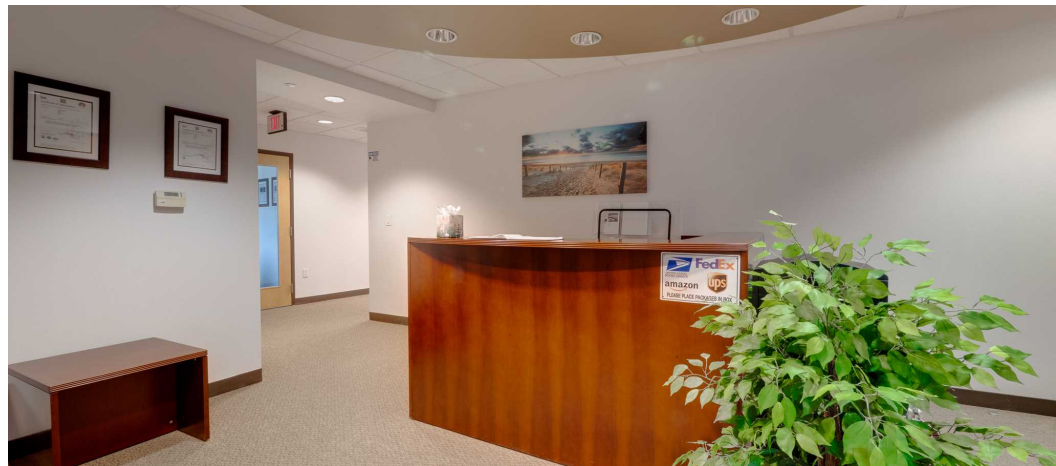
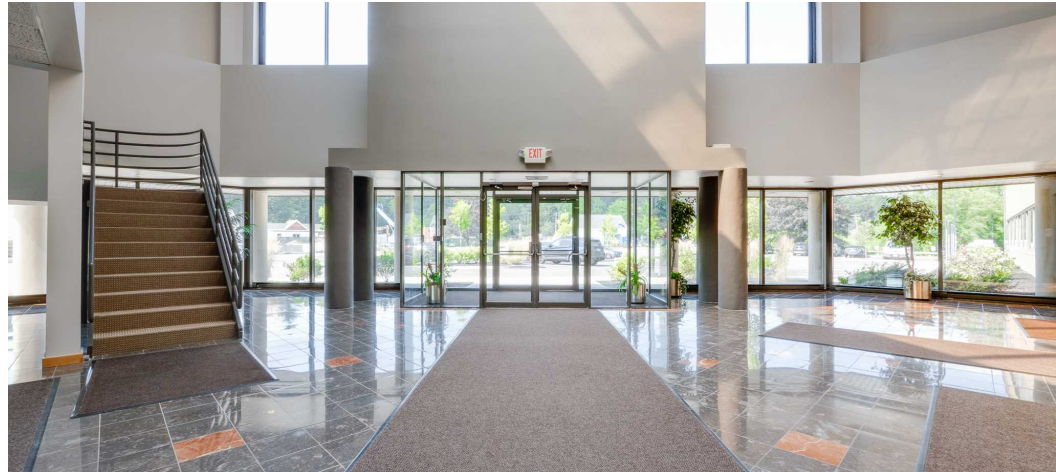
With its beautifully landscaped grounds, newly enhanced amenities, and adaptable layout, 580 Main Street delivers a scenic, accessible, and contemporary workspace solution in central Massachusetts. The lower level is designed for flexible lab or flex space with multiple units.

This property presents excellent potential for owner-users and accommodates a vast array of business needs.

Several available spaces ranging from approximately 2,000SF to 20,000 SF.

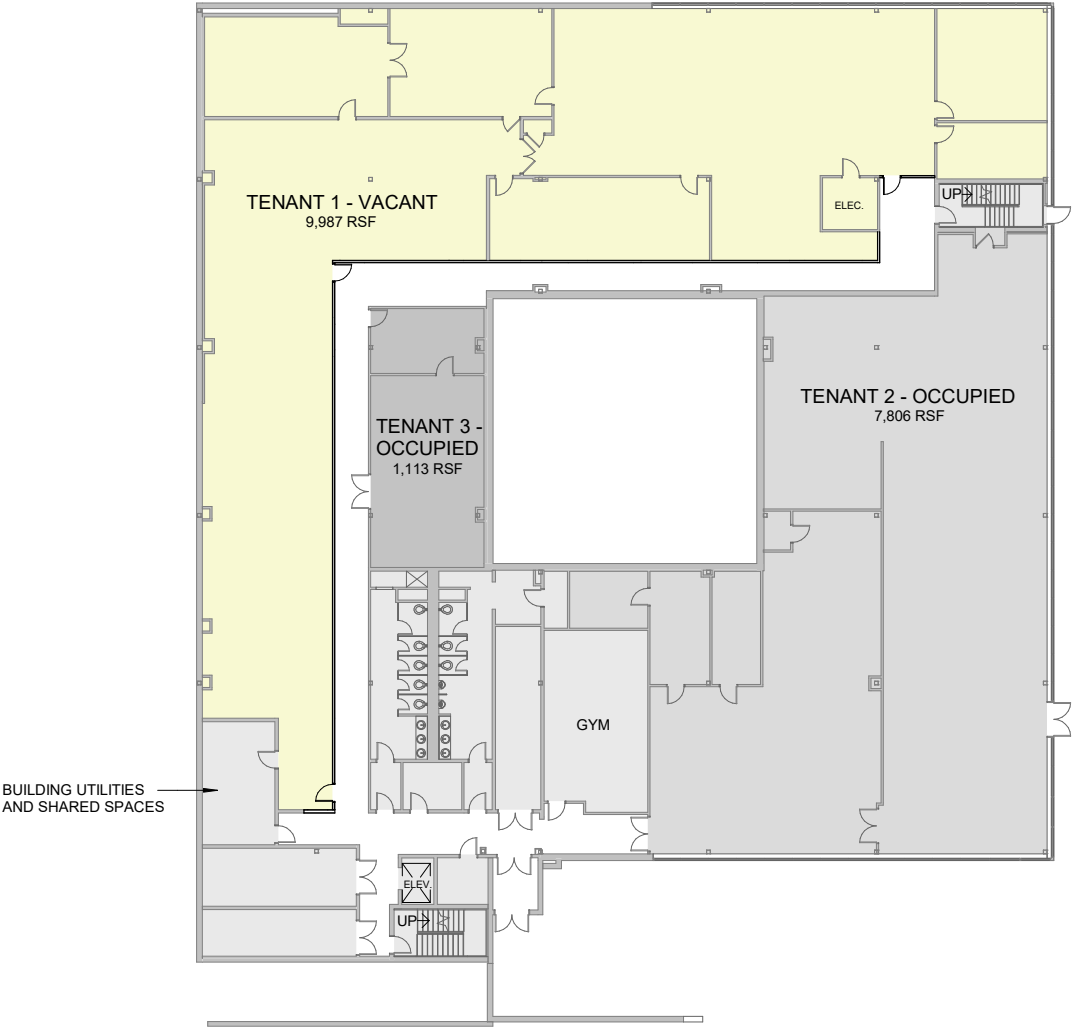
Call Duncan @ 978-621-1290 or Rob @ 781-214-0192 for more questions.

Property Photos



Property Photos

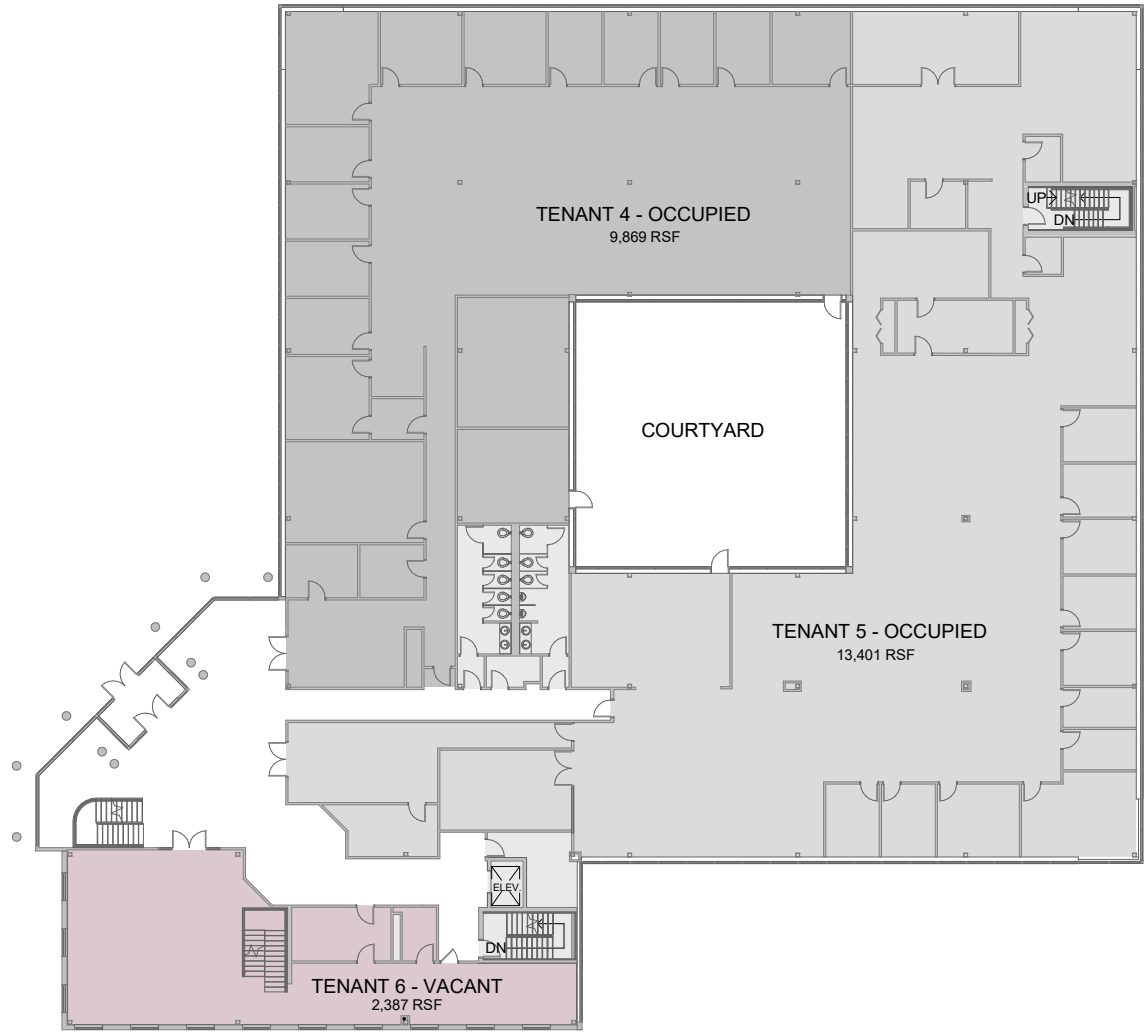




Bolton Square Offices - BOMA / Marketing Plans - Lower Level / 10/23/2025

Shaping the Exceptional / 200 Ayer Road / Suite 200 / Harvard, MA 01451 / 978 456 2800

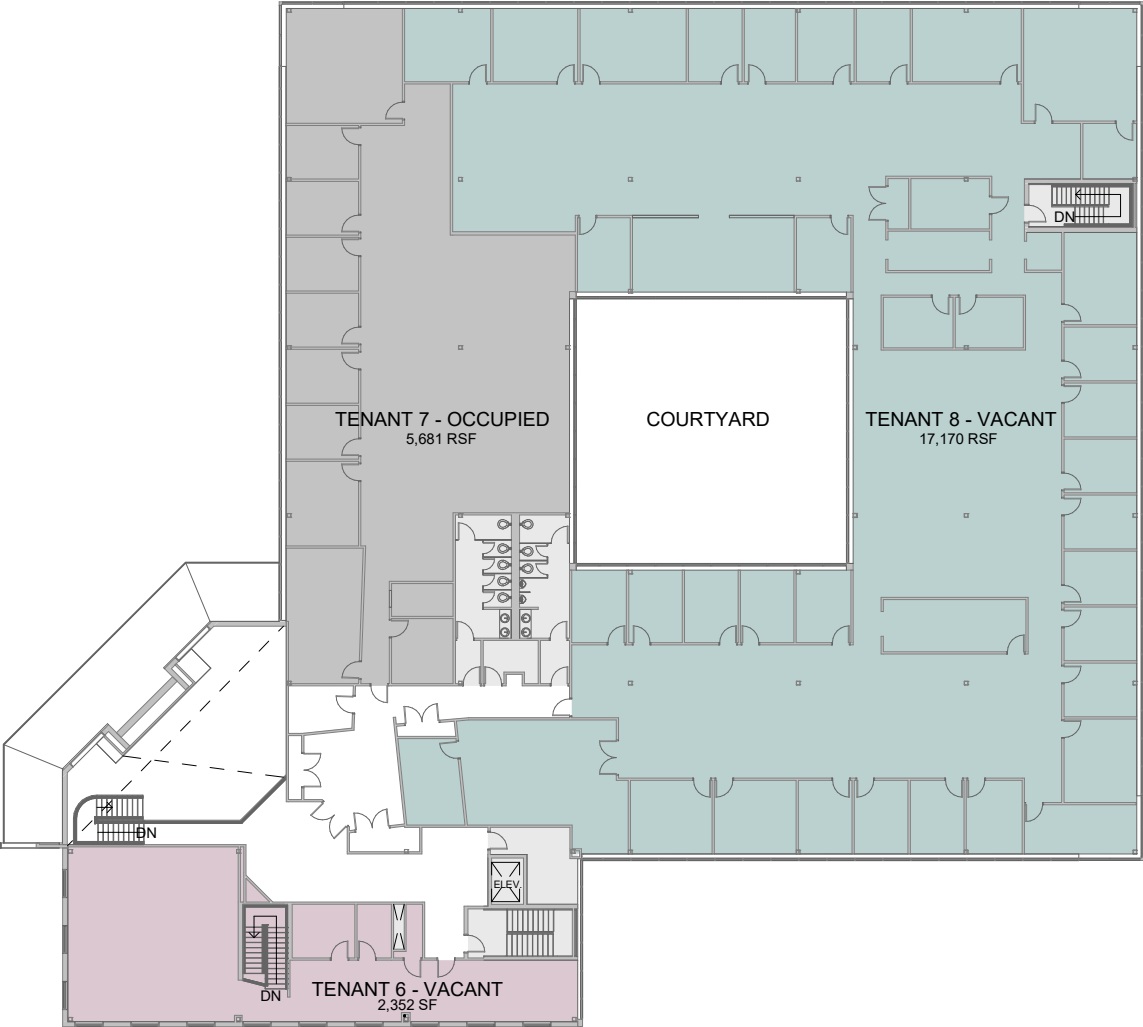




Bolton Square Offices - BOMA / Marketing Plans - First Floor / 10/23/2025

Shaping the Exceptional / 200 Ayer Road / Suite 200 / Harvard, MA 01451 / 978 456 2800

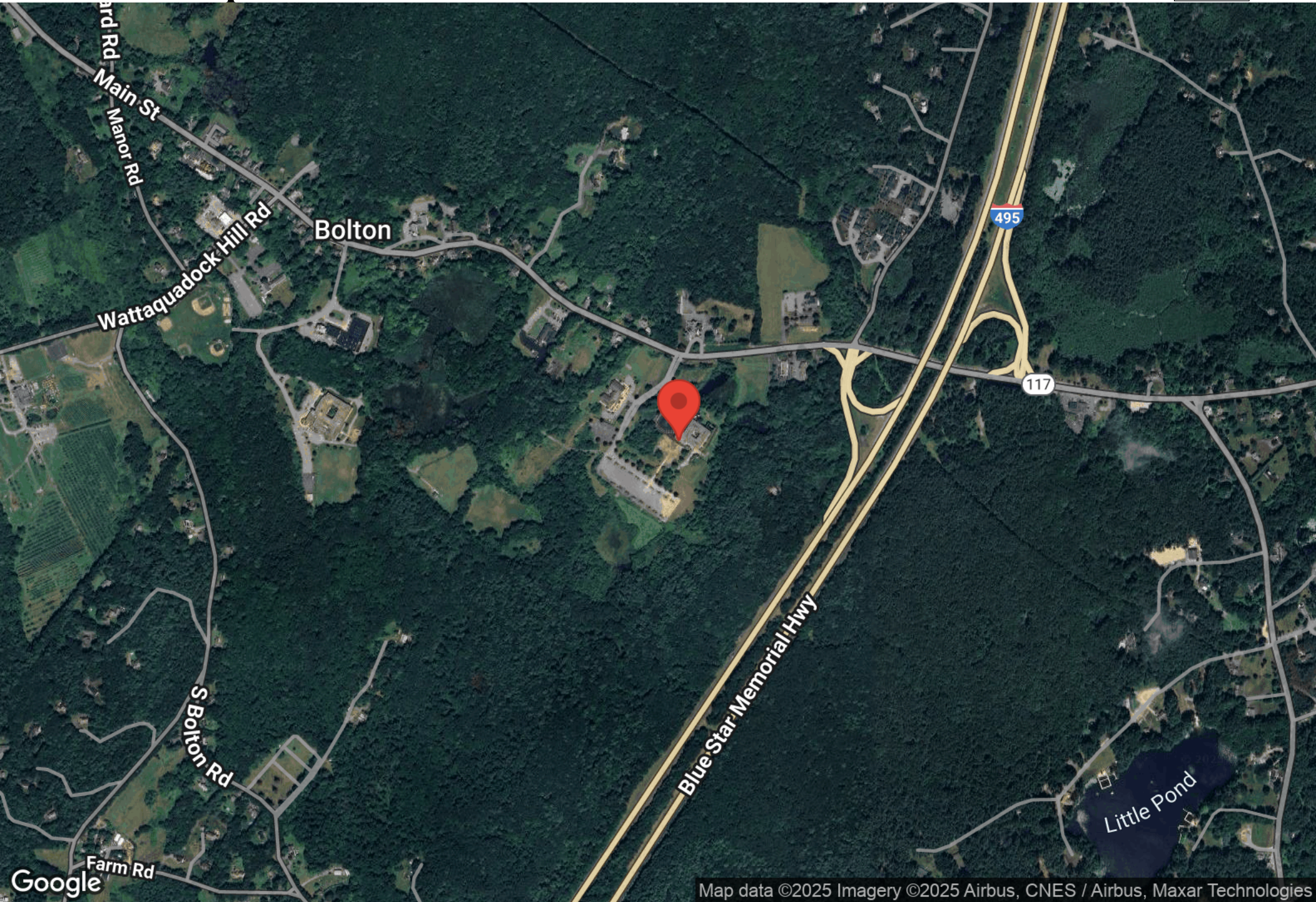




Bolton Square Offices - BOMA / Marketing Plans - Second Floor / 10/23/2025

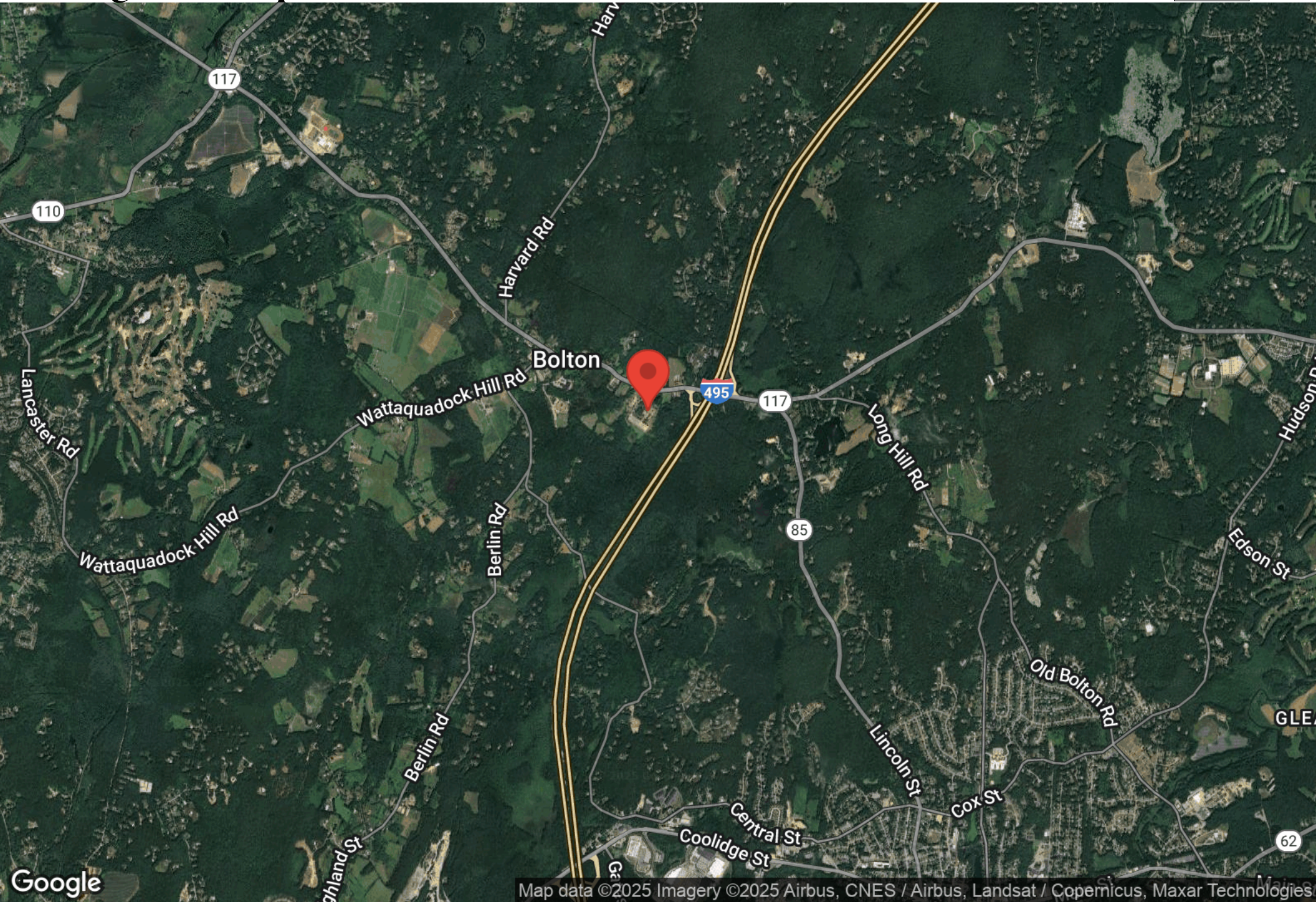
Shaping the Exceptional / 200 Ayer Road / Suite 200 / Harvard, MA 01451 / 978 456 2800



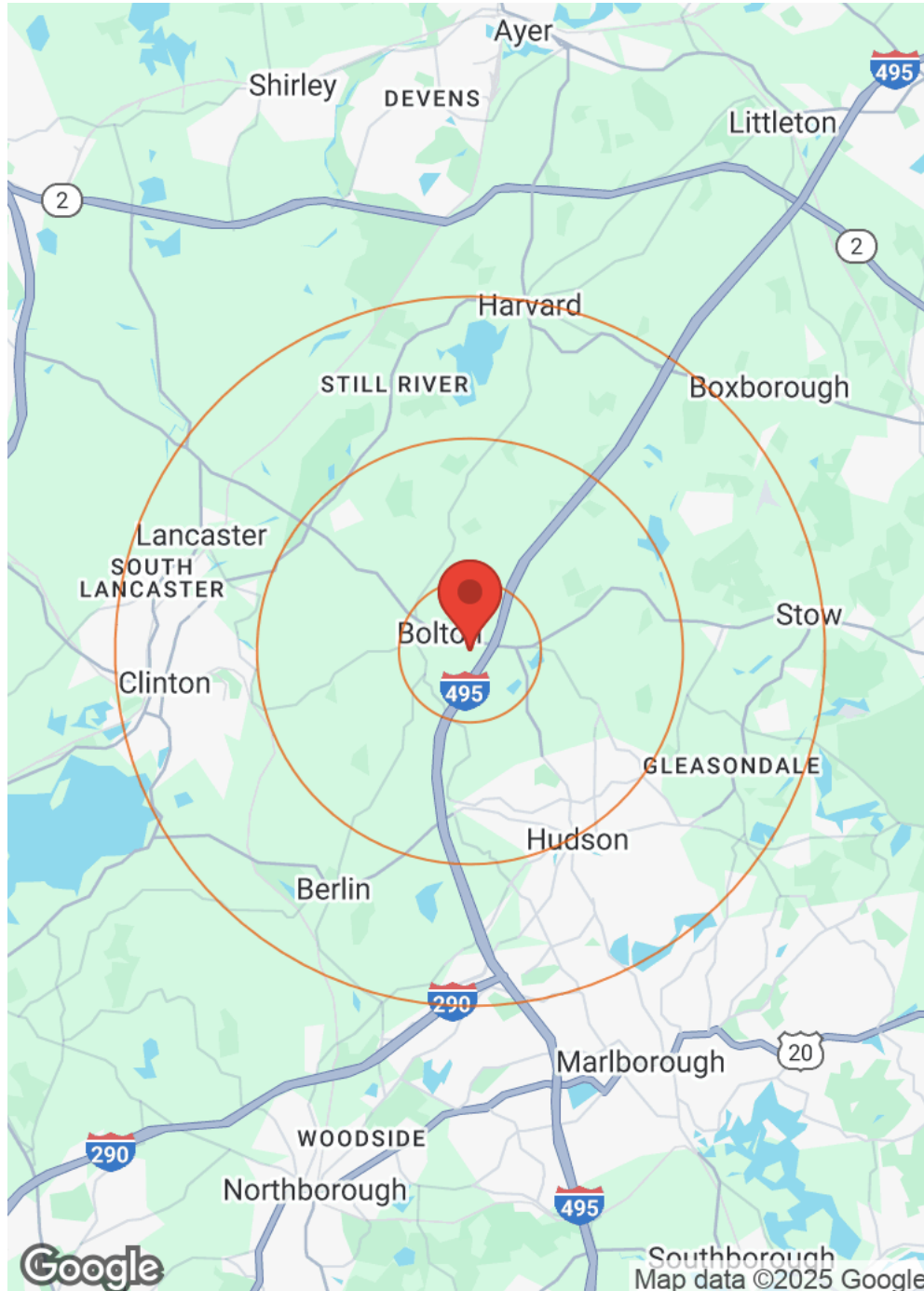


Map data ©2025 Imagery ©2025 Airbus, CNES / Airbus, Maxar Technologies

Regional Map



Demographics



Category	Sub-category	1 Mile	3 Miles	5 Miles
Population	Male	460	7,850	27,928
	Female	465	8,142	28,431
	Total Population	925	15,992	56,359
Age	Ages 0-14	177	2,620	9,032
	Ages 15-24	96	1,789	6,076
	Ages 25-54	336	5,955	21,392
	Ages 55-64	155	2,527	8,805
	Ages 65+	160	3,100	11,055
Race	White	782	13,118	44,867
	Black	6	329	1,730
	Am In/AK Nat	N/A	8	34
	Hawaiian	N/A	2	6
	Hispanic	51	1,126	5,168
	Asian	65	940	2,987
	Multi-Racial	20	395	1,319
	Other	N/A	75	248
Income	Median	\$192,649	\$128,286	\$122,613
	< \$15,000	8	376	1,173
	\$15,000-\$24,999	4	197	806
	\$25,000-\$34,999	4	228	708
	\$35,000-\$49,999	5	295	1,432
	\$50,000-\$74,999	10	737	2,795
	\$75,000-\$99,999	15	570	2,392
	\$100,000-\$149,999	53	1,108	4,382
	\$150,000-\$199,999	70	767	3,381
	> \$200,000	149	1,881	5,717
Housing	Total Units	327	6,323	23,488
	Occupied	319	6,159	22,785
	Owner Occupied	297	4,663	16,044
	Renter Occupied	22	1,496	6,741
	Vacant	9	164	703



NORTHEAST
SOLUTIONS



DUNCAN CHAPMAN

MANAGING BROKER | FOUNDER

PERSONAL PROFILE

A retired Colonel, Duncan has extensive large-scale U.S. and international real estate brokerage experience. He has successfully worked on many private and public real estate transactions at all levels: local, state, federal and quasi-government (e.g., military base redevelopments).

WORK EXPERIENCE

Duncan is the Managing Broker of Northeast Real Estate Solutions, Inc., a New England-based real estate brokerage and consulting firm. He helps clients with all of their real estate needs from development and implementation of complex projects to standard real estate brokerage services. Duncan has over 30 years of commercial and corporate real estate experience. Prior to Northeast, he was a Senior Vice President at The Staubach Company for seven years, based in Boston, MA.

Duncan's diverse experience includes working with large institutional clients such as Texas Instruments, Kaman Aerospace and Cisco Systems. At one point, he was responsible for over 22 million square feet of real estate.

Duncan is a community leader, serves as a Commissioner on the Devens Enterprise Commission. He has succeeded in completing complex projects for a diverse group of public and private clients and organizations.

CONTACT INFO

Office Address: 670 Mechanic Street
Leominster, MA 01453

Office: 978-840-9000

Cell: 978-621-1290

Duncan@KW.com

<https://www.linkedin.com/in/duncan-chapman-002824128>

SKILLS SUMMARY

Real Estate Negotiations

Project Management

Budgeting and Cost Analysis

Short & Long Term Planning

Staff and Client Training

Process Improvement

STATES LICENSED

Massachusetts

Rhode Island

EDUCATION

Norwich University

B.S. Civil Engineering

WWW.NORTHEAST-RE.COM

**LOCAL MARKET PROFESSIONALS WITH
NATIONAL COMMERCIAL REAL ESTATE EXPERIENCE!**

Each office is independently owned and operated.



NORTHEAST
SOLUTIONS



Robert E. Jackson

COMMERCIAL REALTOR®

BACKGROUND

Robert Jackson is an accomplished Commercial REALTOR® and professional engineer by trade with over 20 years of professional experience, specializing in commercial real estate, real estate development and the advanced energy markets. His diverse background includes expertise in originating, entitling, financing, constructing and operating advanced energy assets for publicly traded companies. Since 2015, Robert has been Managing Partner for Futuron LLC, focusing on real estate investment and consulting for the advanced energy market.

PROFESSIONAL EXPERIENCE

Robert is a Commercial REALTOR® with Northeast Solutions at KW Commercial, offering commercial real estate services nationally within the office, industrial, energy and infrastructure markets. Robert has over 20 years of real estate development experience ranging from interstate pipelines and transmission infrastructure to power generation plants involving conventional and renewable technologies. Robert is numbers focused and an expert in identifying developable land and evaluating project and asset proformas to evaluate both technical and financial viability.

Robert is an expert in the office, industrial and energy markets and maintains a superior concentration in these areas of commercial real estate. He is the lead listing agent for a three-building office complex located in Acton, Massachusetts. He is also leading energy and infrastructure support for KW Government Services which assists public and semi- public entities evaluate their real estate portfolios and provide solutions in energy and infrastructure.

WWW.NORTHEAST-RE.COM

CONTACT INFORMATION

Office Address: 1084 Main Street,
Bolton, MA 01740

Office: 978-860-7173

Cell: 781-214-0192

rjackson@kwcommercial.com

[Website](#)

[LinkedIn](#)

[YouTube](#)

SKILLS SUMMARY

- Commercial Real Estate
- Advanced Energy/Infrastructure
- Program Management
- Real Estate Development
- Strategic/Financial Planning

STATES LICENSED

Massachusetts - 9587133

EDUCATION

MA, Boston University
Energy and Environmental Analysis
BS, Colorado State University,
Environmental Engineering

**LOCAL MARKET PROFESSIONALS WITH
NATIONAL COMMERCIAL REAL ESTATE EXPERIENCE!**

Each office is independently owned and operated.

Don't Miss This Opportunity!

LISTING PRESENTATION |

Exclusively Listed by

Duncan Chapman - Director

☎ (978) 621-1290

✉ duncan@kw.com

📍 147900, Massachusetts

Robert Jackson - Commercial Realtor

☎ (781) 214-0192

✉ rjackson@kwcommercial.com

📍 9587133, Massachusetts

KW Commercial | North Central

670 Mechanic Street

Leominster, MA 01453

Each Office is Independently Owned and Operated



**NORTHEAST
SOLUTIONS**

www.kwcommercial.com