

2.2 ACRES IDEAL FOR PARKING/IOS IN CENTRAL BROWARD FOR LEASE

1340 NW 40th Avenue, Lauderdale, FL 33313



Andrew Rosenberg
(305) 897-0939
andrew@upsidecre.com
www.upsidecre.com

2.2 ACRES IDEAL FOR PARKING IN CENTRAL BROWARD FOR LEASE

ADDRESS: 1340 NW 40th Ave
Lauderhill, FL 33313

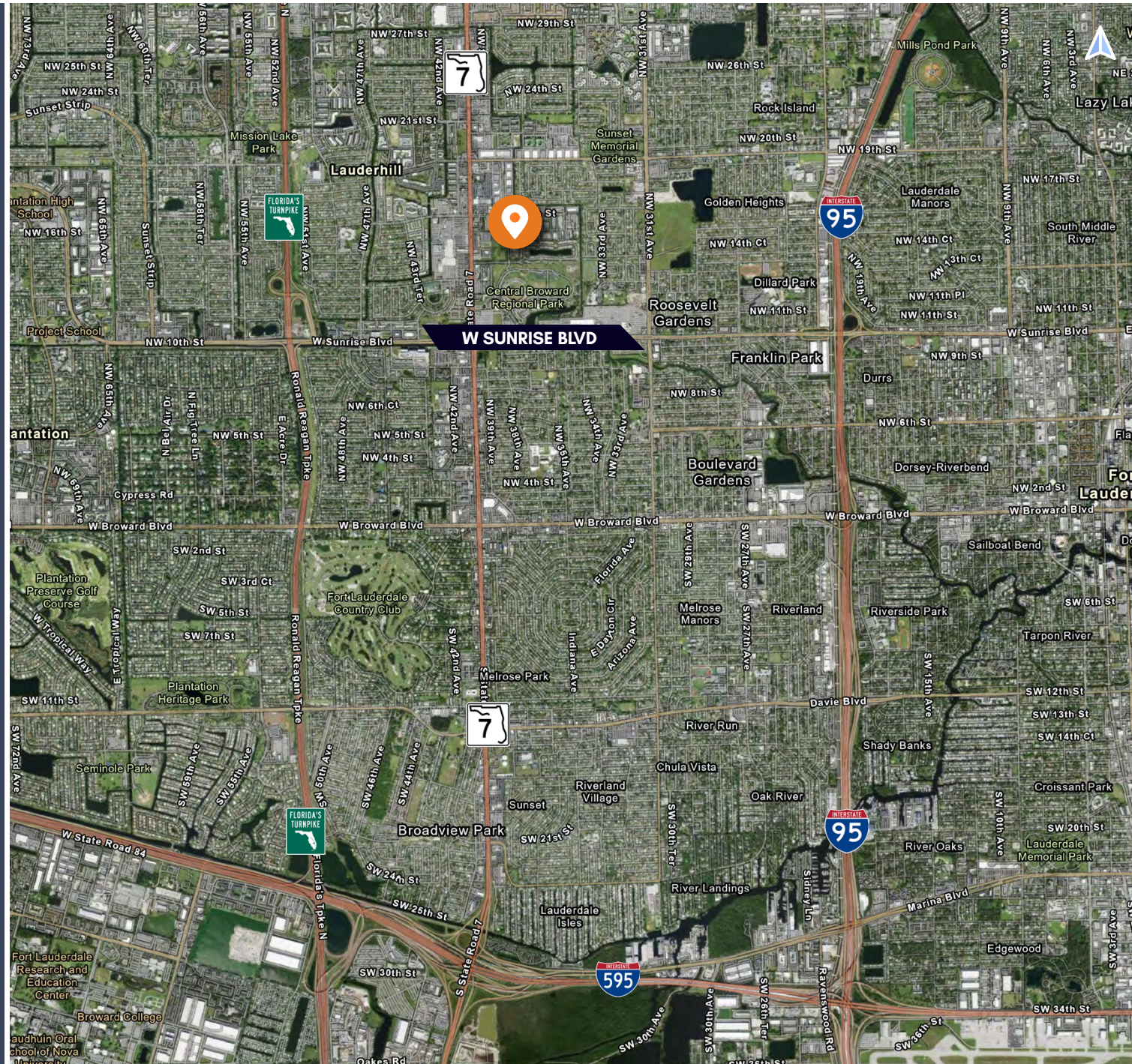
SIZE: 2.2 AC / 96,213 SF

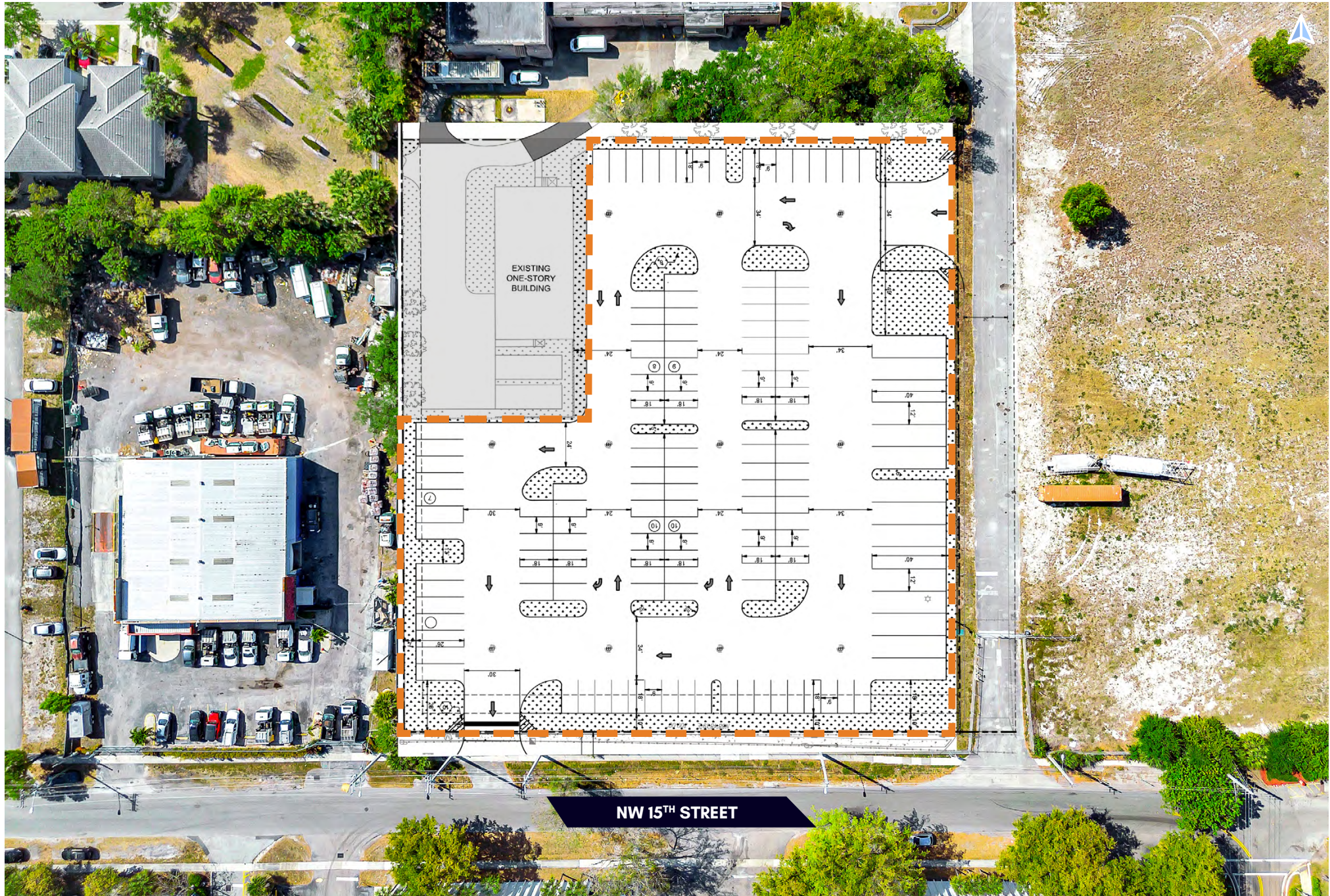
FOLIO #: 4942 31 34 0020

AVAILABILITY: Immediate

PRICING: Upon request

- Ideal site for Parking, IOS
- Located in Central Broward between I-95 and the FL Turnpike










FOR INQUIRIES, CONTACT:

ANDREW ROSENBERG

President

 **(305) 897-0939**

 **andrew@upsidecre.com**

 **www.upsidecre.com**