

# 1,100 SF | Downtown Alpharetta Colony Park Offices

First Floor Suite  
Alpharetta, GA 30009



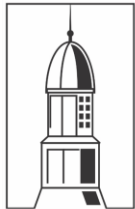
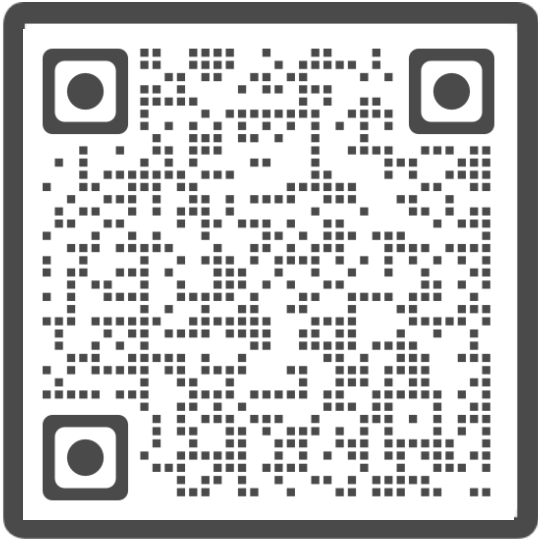
**Property Highlights:**

- 1,100- Fully Renovated – First Generation Office Space
- Alpharetta Walking District – Start of the Alpha Loop
- Part of a 9 Acre 100+ Condominium Office Park
- Professional On-Site Property Management and Leasing
- 500+ On-Site Parking Spaces
- Less than 1 Mile from Avalon Development & GA 400

**Take the Virtual Tour of Typical Renovations:**

<https://my.matterport.com/show/?m=deo9ERPf6ek>

Property Type	Office
Space	1,100 sq ft
Rent Type	Modified Gross
Term	5-7 Year





For Lease

284 South Main Street | Alpharetta



Shiplap Feature Wall

Private Reception

3 Private Offices

Private Break Area and Private Bathrooms

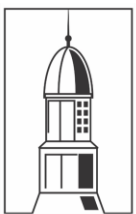


COLONY PARK  
OFFICE CONDOMINIUMS

284 South Main St • Alpharetta, GA 30009



For Lease

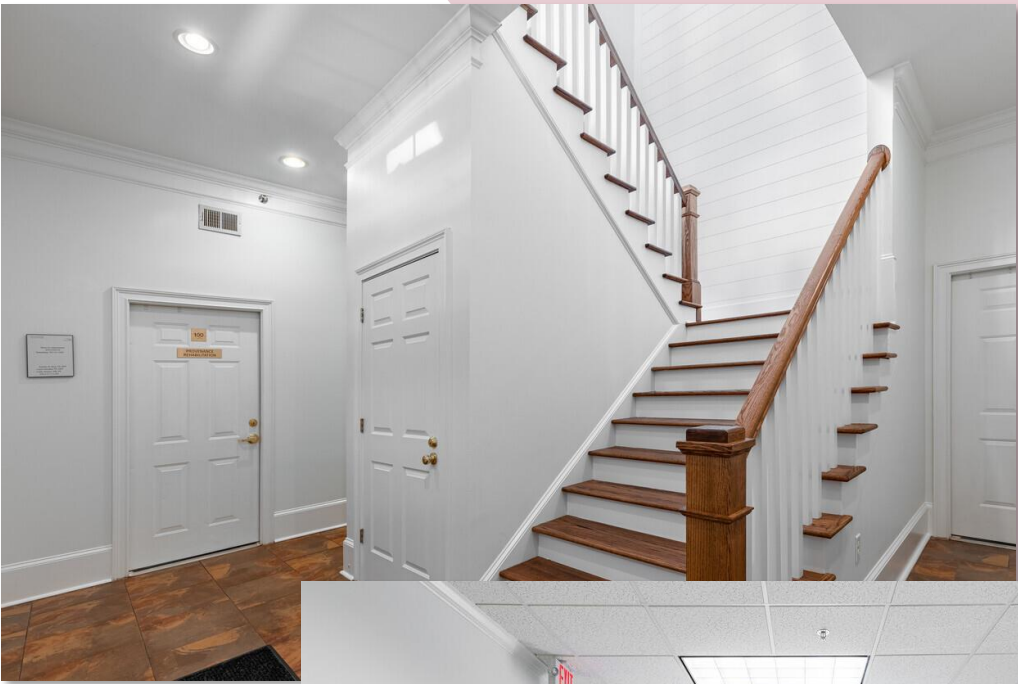


OFFICE CONDOMINIUMS

284 South Main St • Alpharetta, GA 30009

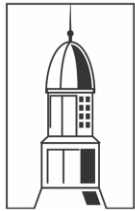
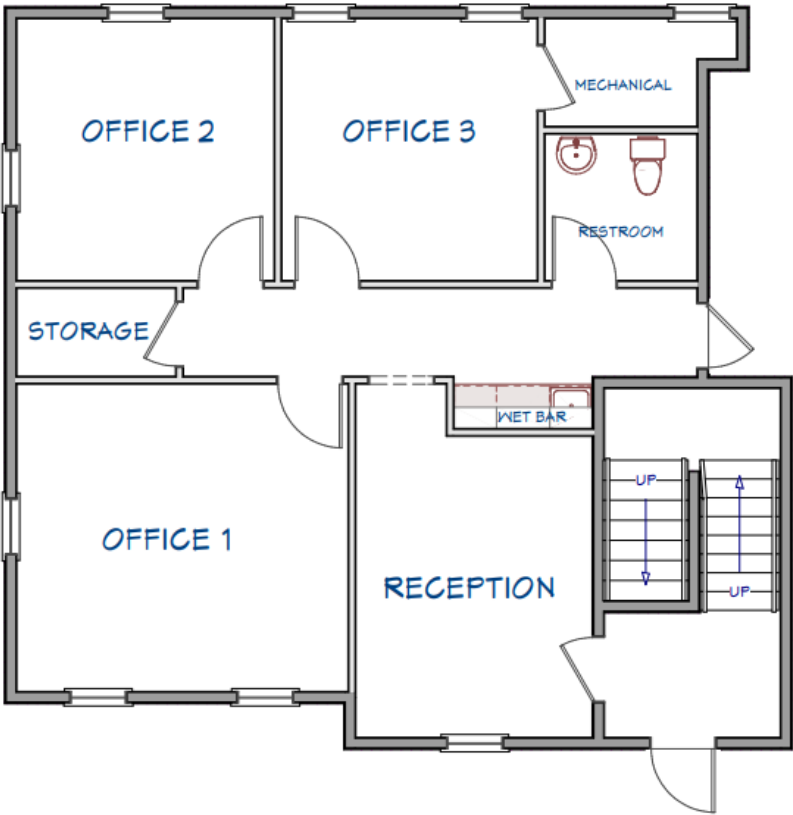
For Lease

284 South Main Street | Alpharetta



Floor Plan – Suite 100

1106 SQ FT



COLONY PARK  
OFFICE CONDOMINIUMS

284 South Main St • Alpharetta, GA 30009



# Location

