

# 4822 LEAFDALE BLVD ROYAL OAK, MICHIGAN



## GREAT CREATIVE SPACE FOR LEASE

**4,958 SQUARE FEET OF  
MODERN HIGH-TECH  
SPACE AVAILABLE**

**COMPLETELY REMODELED  
ZERILLI STUDIOS**

**MINUTES FROM DOWNTOWN  
BIRMINGHAM & I-75 WITH  
PRIVATE GATED PARKING!**



For more information, please contact:

**KRIS PAWLOWSKI**  
(248) 359 3801

[kpawlowski@signatureassociates.com](mailto:kpawlowski@signatureassociates.com)

**JASON KELMIGIAN**  
(248) 359 0629

[jkelmigian@signatureassociates.com](mailto:jkelmigian@signatureassociates.com)

**SIGNATURE ASSOCIATES**  
One Towne Square, Suite 1200  
Southfield, MI 48076  
[www.signatureassociates.com](http://www.signatureassociates.com)

## BEAUTIFULLY DESIGNED WITH UNIQUE FINISHES

- Italian designed modern building
- Redesigned lobby complete with travertine marble flooring
- Stunning floor to ceiling glass entrance
- Excellent open shop space
- Currently a photography studio
- Unique finishes throughout



LOBBY

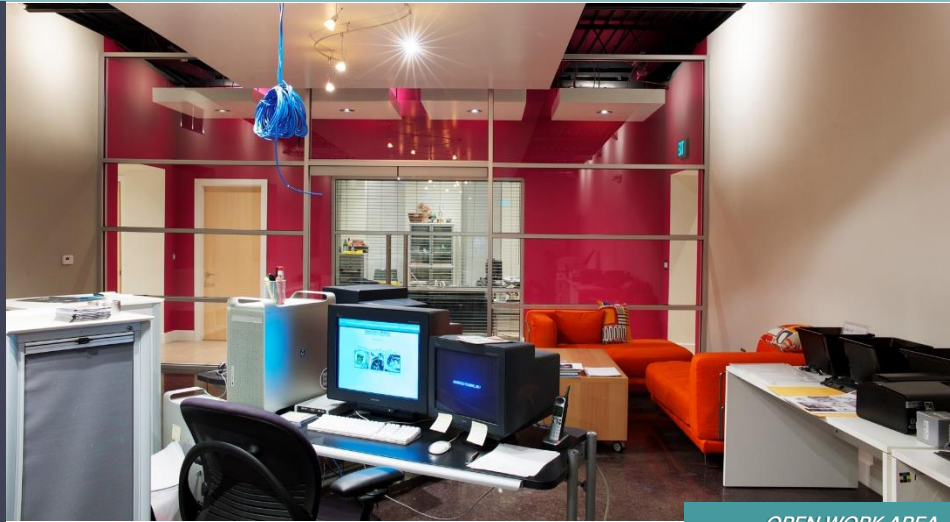


OPEN SHOP SPACE



## ADDITIONAL FEATURES

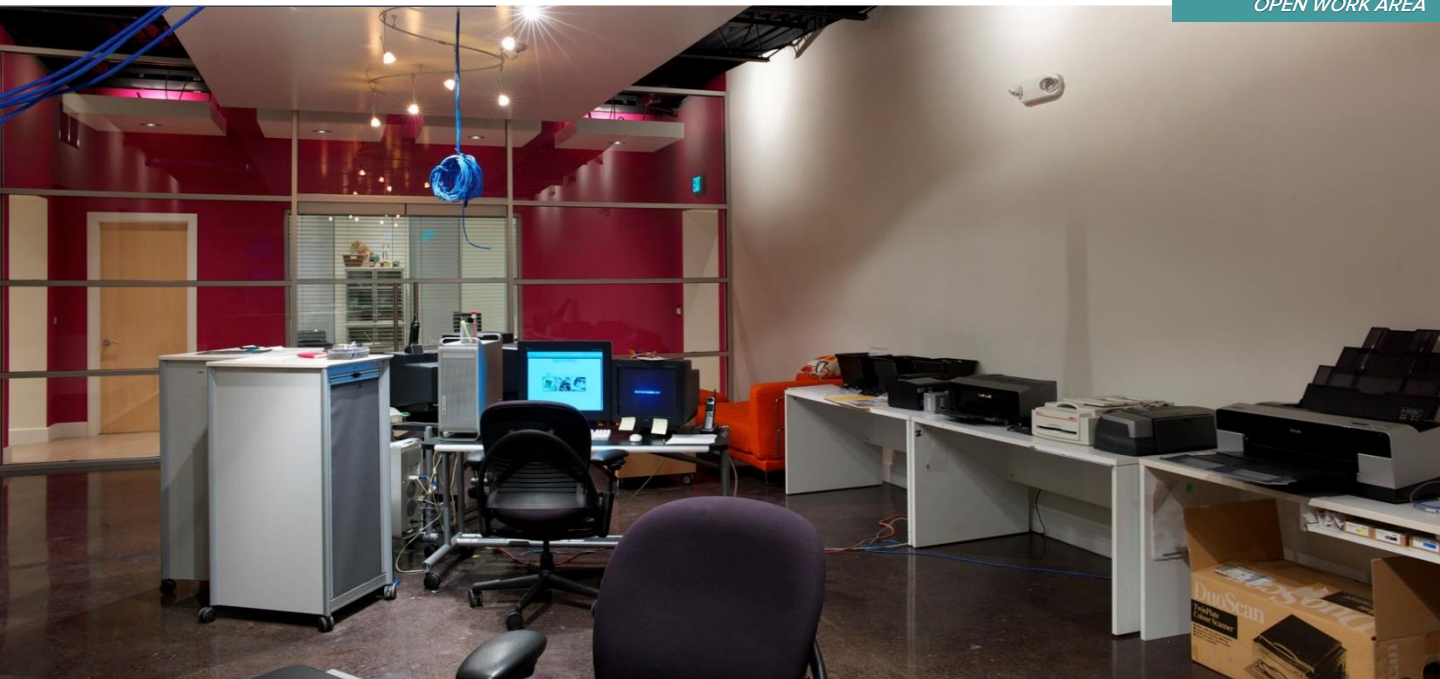
- High float ceilings carried through the space
- Adjustable drop shadow wall lighting and recessed lighting creating a welcoming ambiance
- Porcelain flooring in the offices in addition to solid wood doors and partition glass
- 3 separate HVAC units servicing the whole building
- Great work atmosphere!



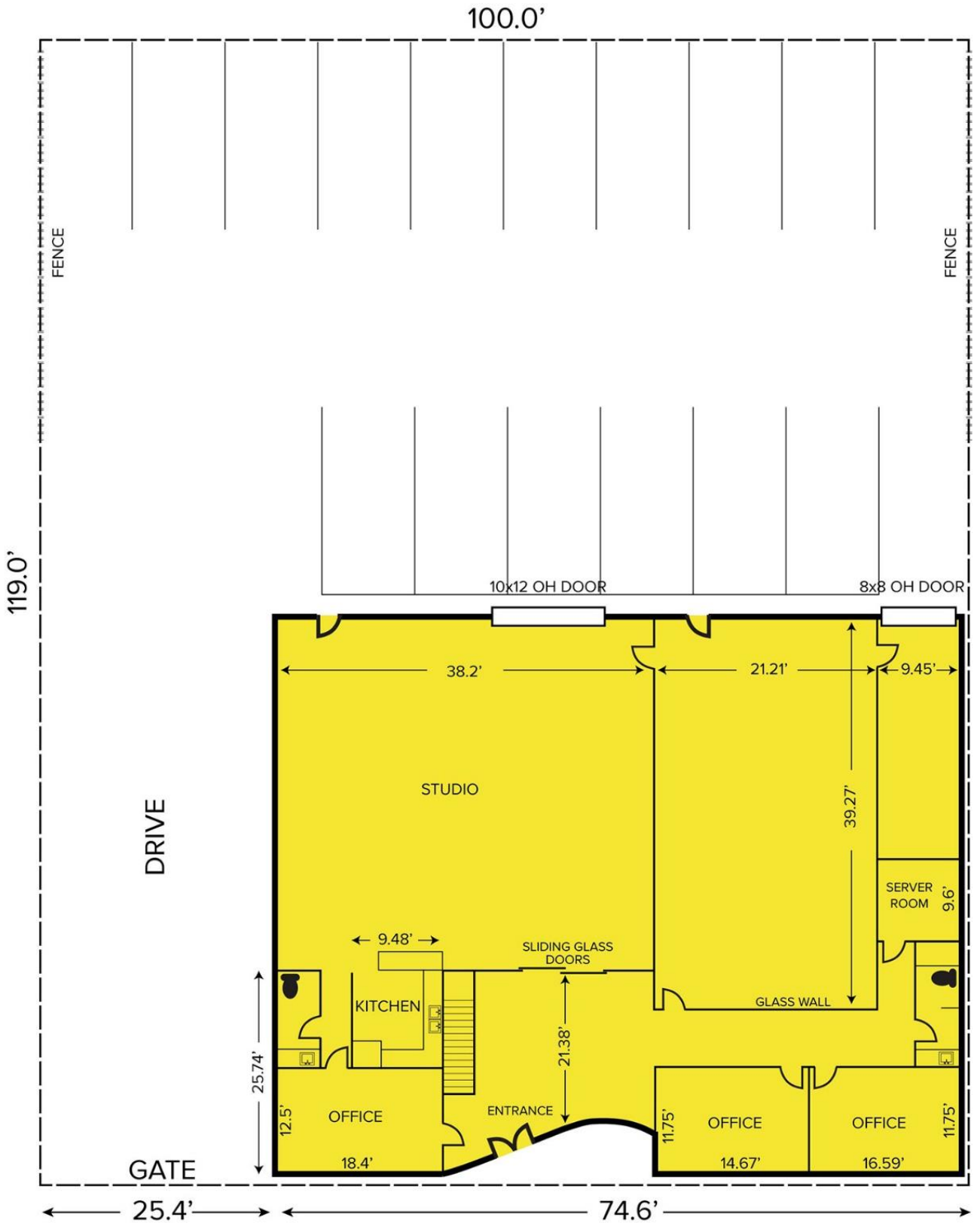
OPEN WORK AREA



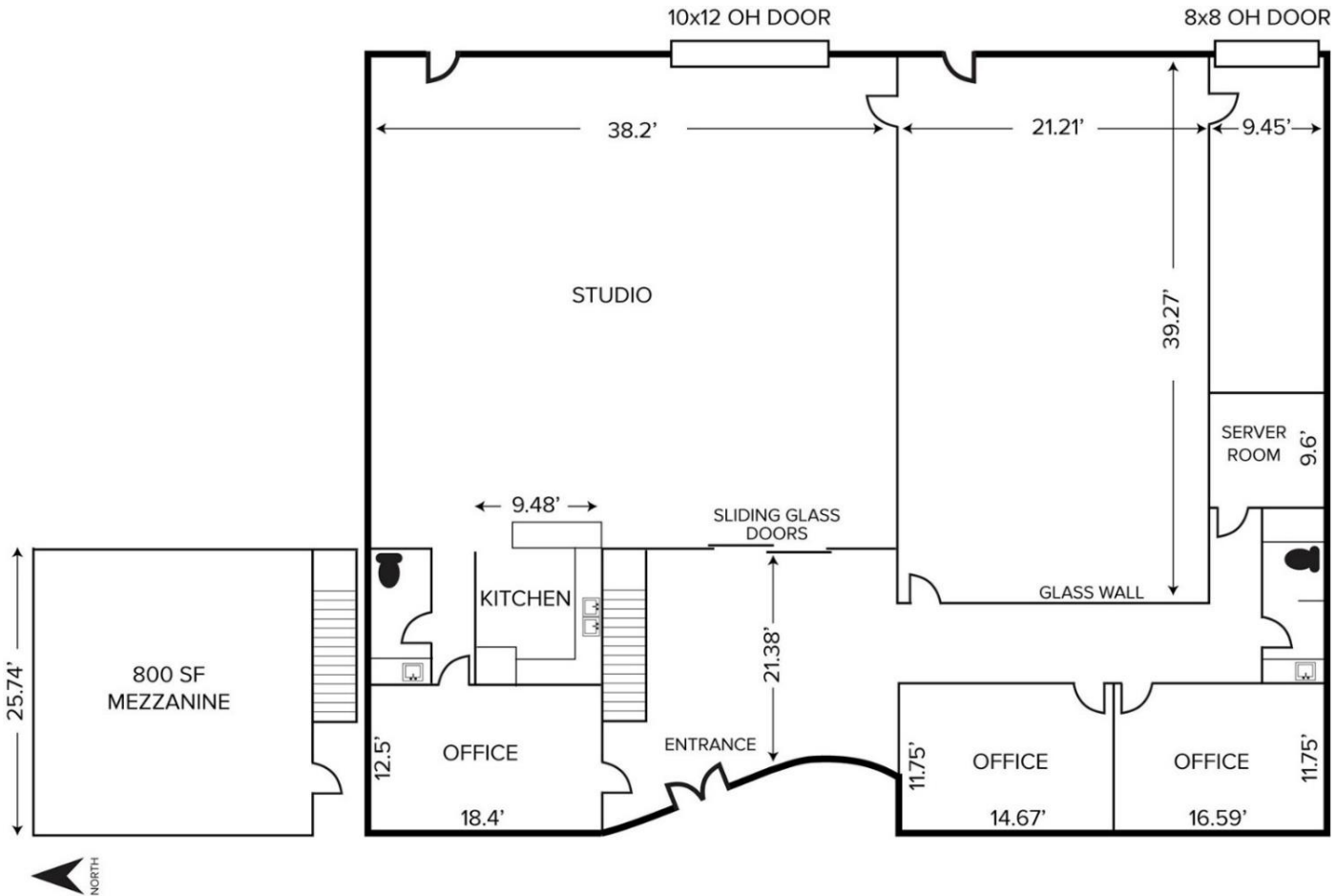
OPEN WORK AREA



Site Plan



# Floor Plan



For more information, please contact:

**KRIS PAWLOWSKI**  
(248) 359 3801  
kpawlowski@signatureassociates.com

**JASON KELMIGIAN**  
(248) 359 0629  
jkelmigian@signatureassociates.com

**SIGNATURE ASSOCIATES**  
One Towne Square, Suite 1200  
Southfield, MI 48076  
www.signatureassociates.com