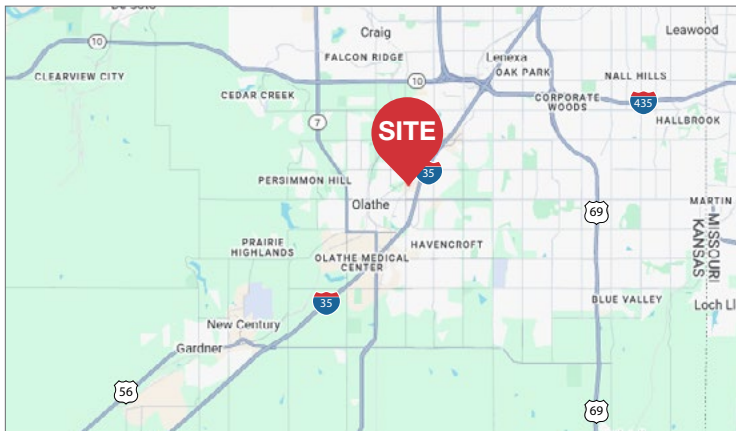


## 590 N Central Street Olathe, Kansas

- Proposed 8,000 SF Flex/Industrial Building
  - Drive-in Loading Doors
  - Convenient I-35 Access via 135th or 119th
  - Flexible MP-2 Zoning
  - Several Restaurants and Retail Nearby
  - Sale Price: \$1,655,905
    - Includes warm shell building, land, parking lots.
- Final pricing subject to change.*



For more information:

**Logan Rose**

+1 913 890 2013

lrose@nai-heartland.com

**Tom Kennedy, SIOR**

+1 913 515 3758

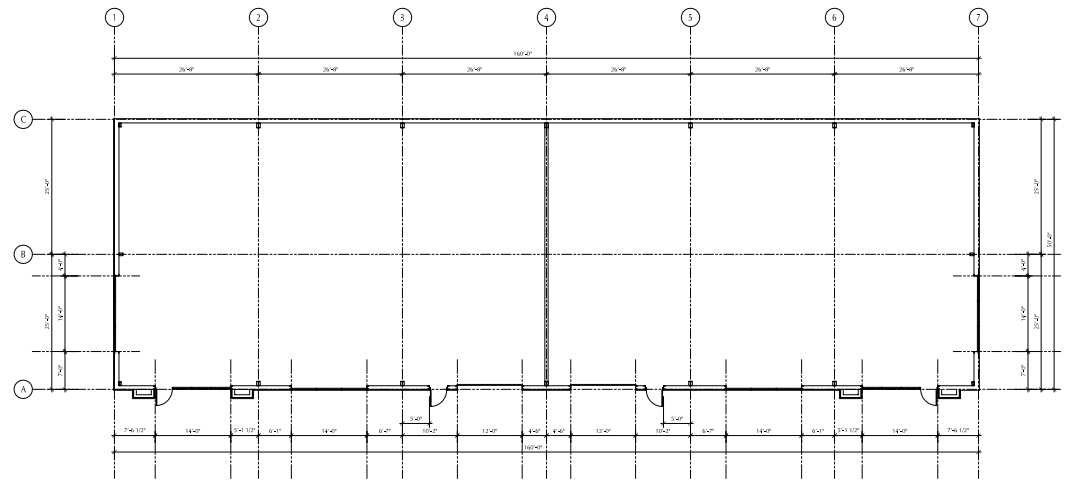
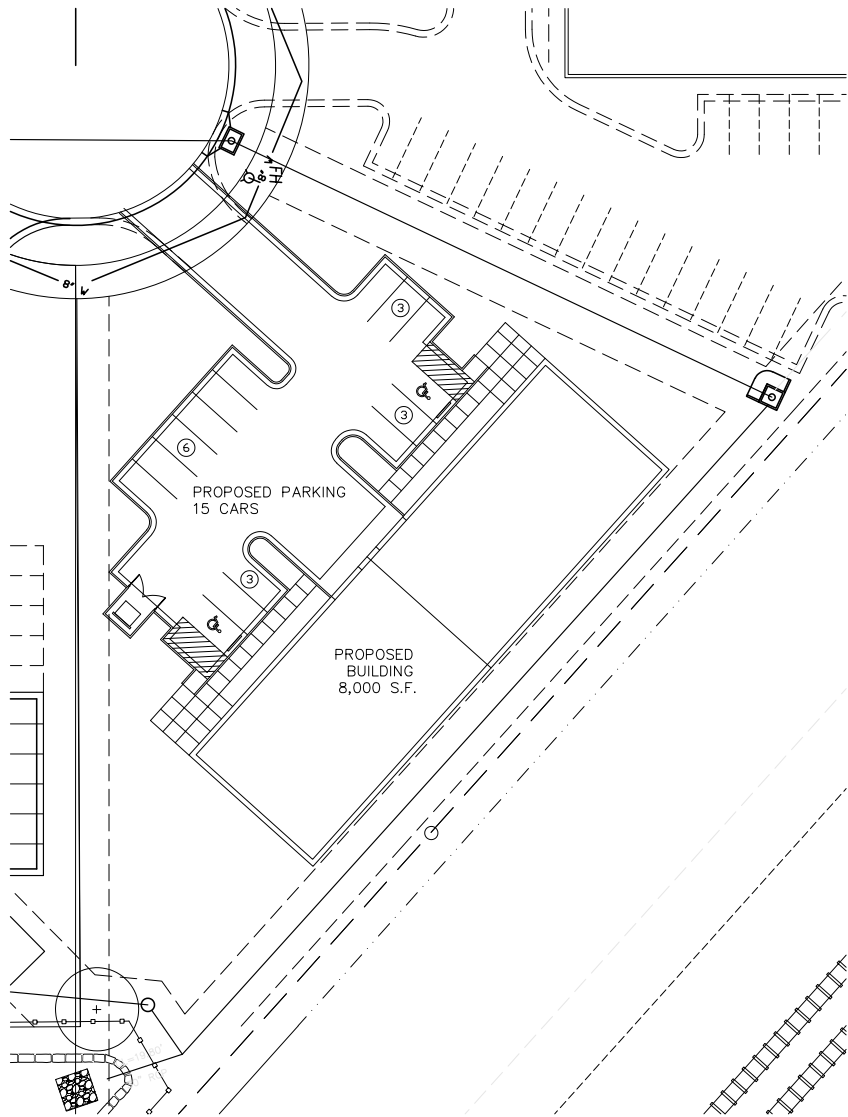
tom@nai-heartland.com







Available For Sale  
Proposed 8,000 SF  
Flex/Industrial Building







## EXTERIOR BUILDING COLORS

-  2" IMP 42" WIDE METAL LT MESA VERTICAL WALL PANEL  
COLOR: ALMOND
-  2" IMP 42" WIDE METAL LT MESA VERTICAL WALL PANEL  
COLOR: SANDSTONE
-  2" IMP 42" WIDE METAL LT MESA VERTICAL WALL PANEL  
COLOR: BROWN STONE
-  ACME BRICK COMPANY ALLENTOWN MODULAR  
VELOUR TUP008 PRODUCT NO 866922

