

Oxford Companies  
734.665.6500  
oxfordcompanies.com



Integrated  
Real Estate  
Services



## Office Building For Lease

The 777 Building

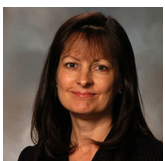
777 E Eisenhower Parkway, Suite 710

Ann Arbor, MI 48104

5,586 SF

\$28.00 SF/yr (MG)

Available 4/1/2025



Contact Karen O'Neil for  
more information or to  
schedule a tour.

Office: 734.665.6500  
Cell: 734.323.4263  
koneil@oxfordcompanies.com



The 777 Building  
777 E Eisenhower Parkway, Suite 710  
Ann Arbor, MI 48104



Integrated  
Real Estate  
Services



#### OFFERING SUMMARY

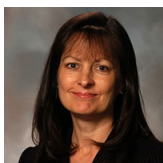
Lease Rate:	\$28.00 SF/yr (MG)
Available SF:	5,586 SF
Year Built:	1975
Renovated:	2000
Parking Ratio:	3.6
Zoning:	TC1

#### PROPERTY OVERVIEW

The 777 Building is one of the area's most iconic commercial properties, and businesses now have the rare opportunity to lease Ann Arbor office space in one of the city's only high-rises. 777's tenant roster includes national tech, finance, and professional services corporations. The entrance and lobby were renovated in 2022 and feature Class A finishes throughout. An on-site coffee shop and sushi restaurant provide tenants with exceptional dining options while also bringing in a steady stream of visitors. Several other dining and retail options are easily within walking distance. Visibility at 777 is among the highest in Ann Arbor, thanks to its 10 story, 300,000 SF footprint and fantastic location at the corner of E. Eisenhower Parkway and S. State Street. Secluded, paved walkways surround the property and are maintained year-round.

#### PROPERTY HIGHLIGHTS

- Completely renovated with Class A finishes throughout
- On-site property management and 24-hr security
- Abundant surface parking & available covered parking
- Multiple fiber providers
- Lower level storage



Contact Karen O'Neil for  
more information or to  
schedule a tour.

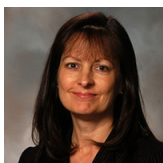
Office: 734.665.6500  
Cell: 734.323.4263  
[koneil@oxfordcompanies.com](mailto:koneil@oxfordcompanies.com)



The 777 Building  
777 E Eisenhower Parkway, Suite 710  
Ann Arbor, MI 48104



Integrated  
Real Estate  
Services



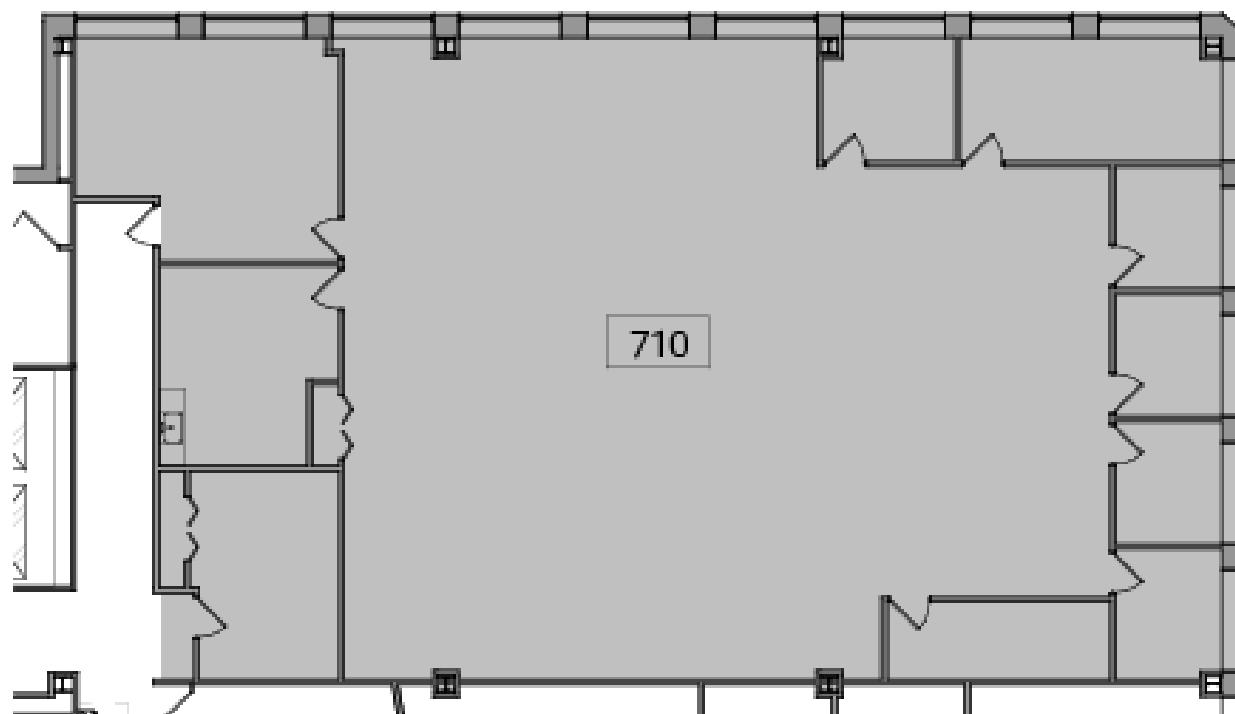
Contact Karen O'Neil for  
more information or to  
schedule a tour.

Office: 734.665.6500  
Cell: 734.323.4263  
[koneil@oxfordcompanies.com](mailto:koneil@oxfordcompanies.com)

The 777 Building  
777 E Eisenhower Parkway, Suite 710  
Ann Arbor, MI 48104

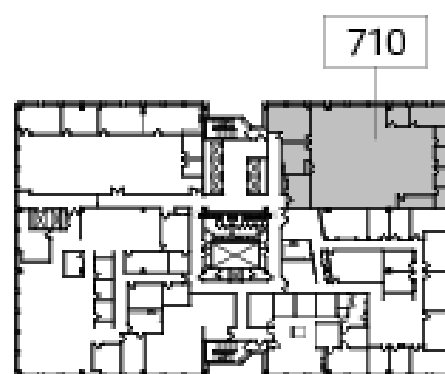


Integrated  
Real Estate  
Services



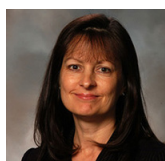
N  
2  
710  
8' 16' 32' 1/16" = 1'-0"

Suite 710 - Partial Level 7 Existing Floor Plan



N  
1  
710  
100' 200' 1" = 100'-0"

Key Plan - Level 7



Contact Karen O'Neil for  
more information or to  
schedule a tour.

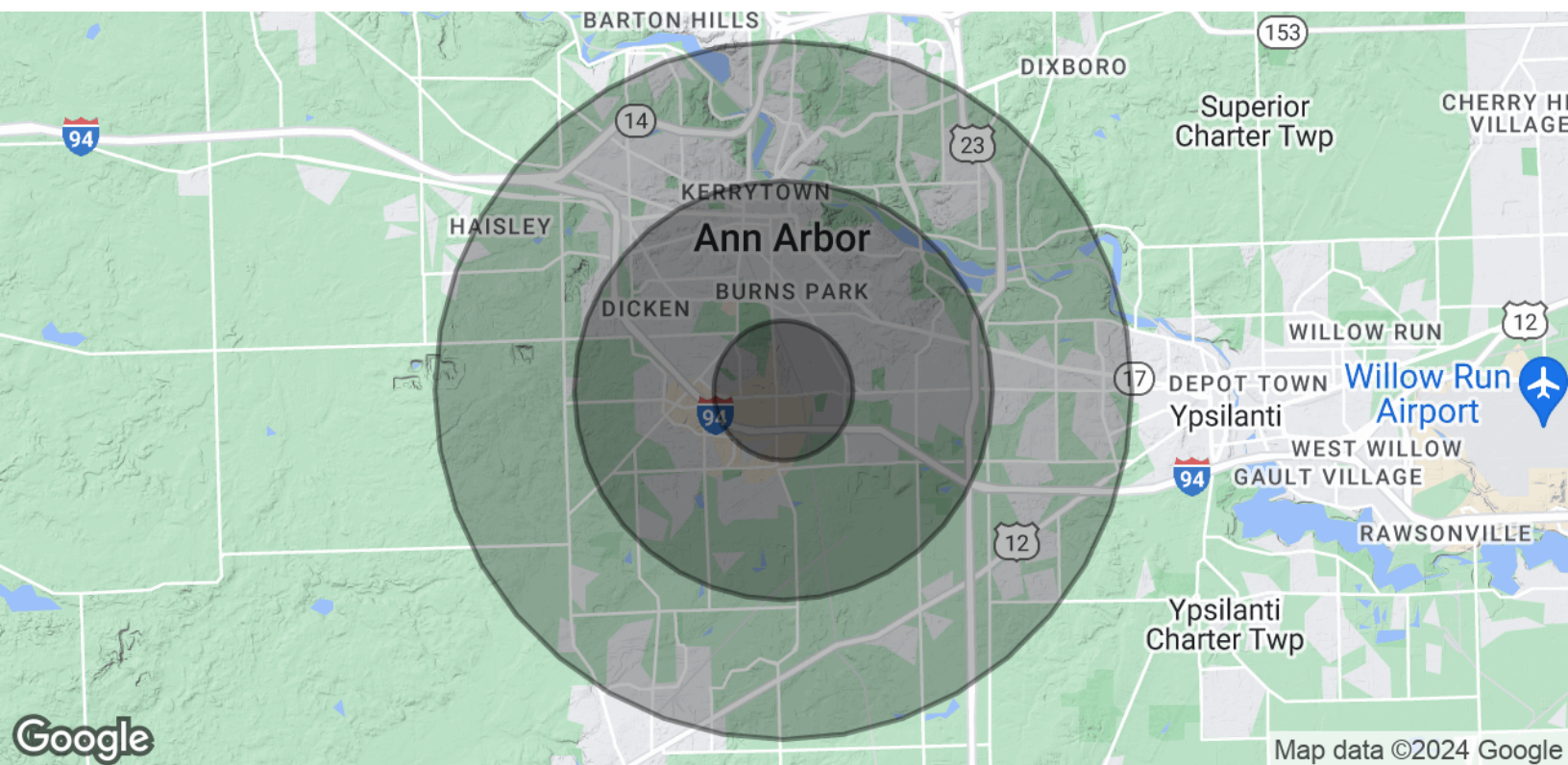
Office: 734.665.6500  
Cell: 734.323.4263  
[koneil@oxfordcompanies.com](mailto:koneil@oxfordcompanies.com)



The 777 Building  
777 E Eisenhower Parkway, Suite 710  
Ann Arbor, MI 48104



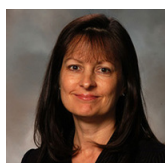
Integrated  
Real Estate  
Services



POPULATION	1 MILE	3 MILES	5 MILES
Total Population	9,841	100,415	188,752
Average Age	32.0	30.9	32.7
Average Age (Male)	32.2	30.8	32.4
Average Age (Female)	31.7	31.0	33.1

HOUSEHOLDS & INCOME	1 MILE	3 MILES	5 MILES
Total Households	4,831	37,864	74,075
# of Persons per HH	2.0	2.7	2.5
Average HH Income	\$59,810	\$76,540	\$79,336
Average House Value	\$117,606	\$329,758	\$323,070

\* Demographic data derived from 2020 ACS - US Census



Contact Karen O'Neil for  
more information or to  
schedule a tour.

Office: 734.665.6500  
Cell: 734.323.4263  
[koneil@oxfordcompanies.com](mailto:koneil@oxfordcompanies.com)