

FOR SUBLEASE

9618 W PICO BLVD

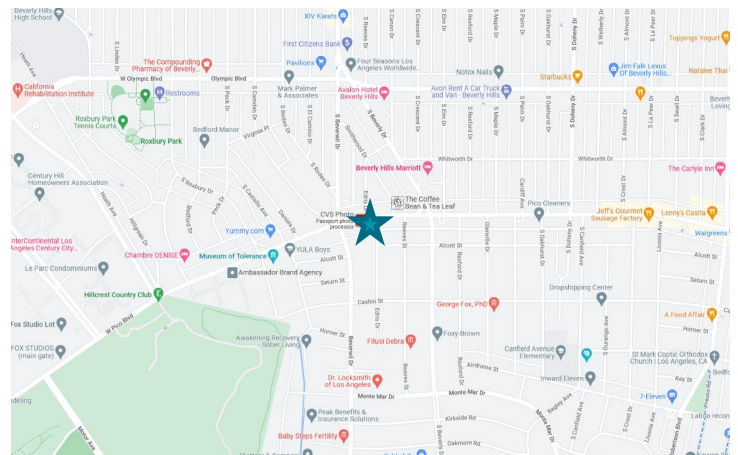
Beverlywood, California

2,650 Square Feet



PROPERTY HIGHLIGHTS

- 2,650 SF
- Rental Rate: Negotiable
- Sublease term through December 2026
- Plug-n-play bank branch
- Close proximity to numerous amenities
- Furniture can be made available



JOHN WINNEK

Senior Director
+1 213 629 6586

john.winnek@cushwake.com
LIC #01262525

CHRISTINE MARDIROSIAN

Brokerage Specialist
+1 213 955 5172

christine.mardirosian@cushwake.com
LIC #01894744



**CUSHMAN &
WAKEFIELD**

cushmanwakefield.com

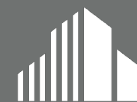
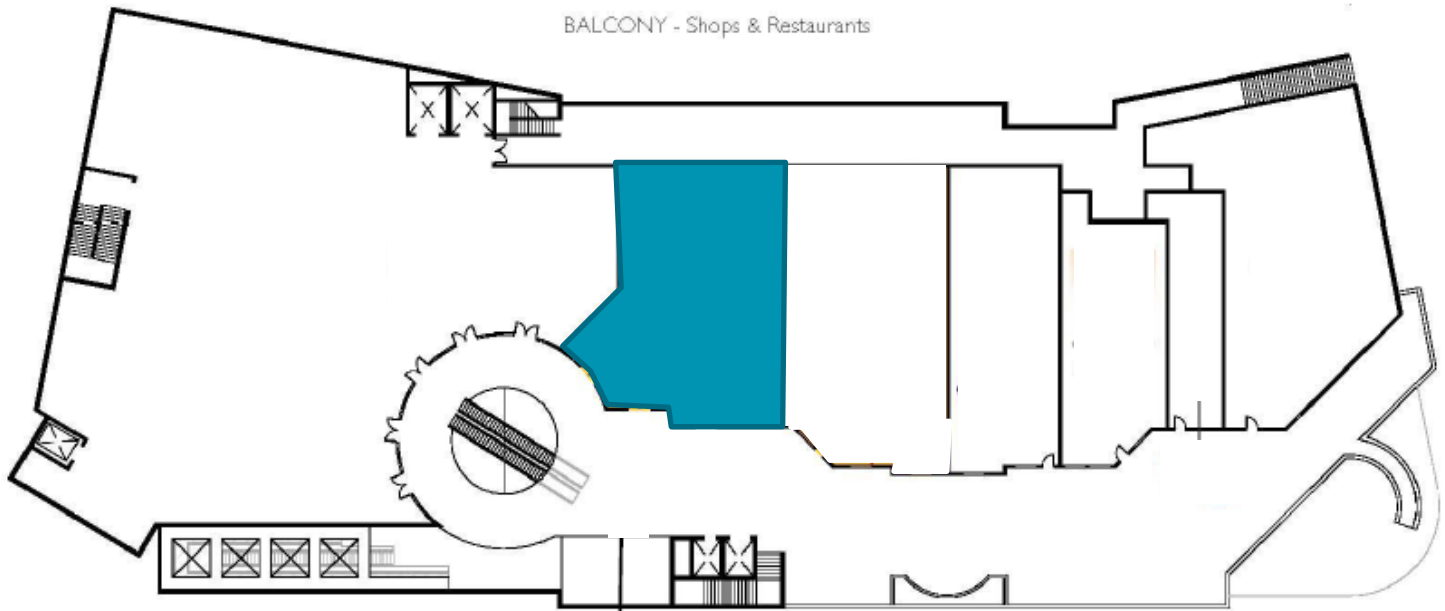
9618 W PICO BLVD

Beverlywood, California

2,650 SF

FOR SUBLEASE

FLOOR PLAN



**CUSHMAN &
WAKEFIELD**

cushmanwakefield.com

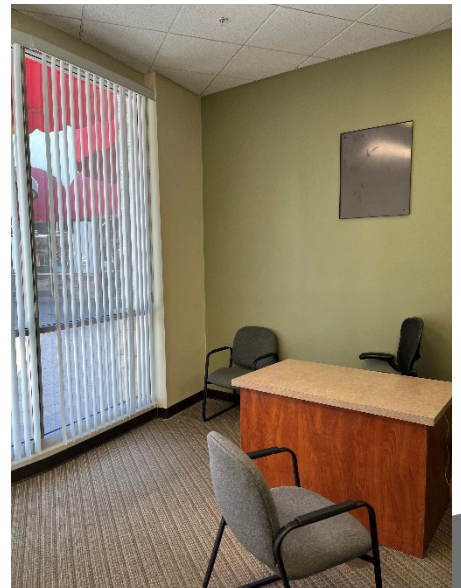
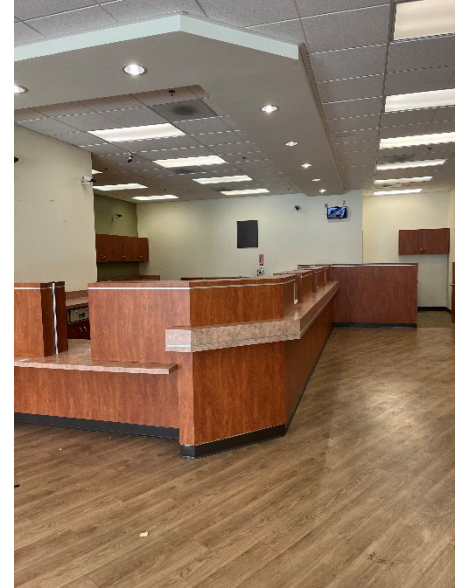
9618 W PICO BLVD

Beverlywood, California

2,650 SF

FOR SUBLEASE

PROPERTY PHOTOS



**CUSHMAN &
WAKEFIELD**

cushmanwakefield.com