

# Donelan's Shopping Center

*In the Heart of the I-495 High-Tech Market*

*224-240 Great Rd., (Rt. 2A & 119) Littleton, MA*

- 39,213 SF Shopping Center on 5 Acres with Immediate Opportunity for up to 37,000 SF Retail
- High-Profile Location 1/2 Mile from I-495, 1/3 Mile from Littleton Common and Rt. 110/2A/119 Intersection
- Tenants: Donelan's Super Market ( 36,713 SF) & Bubble & Polish Nail Spa (2,500 SF)
- 370' Frontage on Great Road
- Town Water, Private Septic, Natural Gas, Electricity (800 Amp), Telephone, HVAC Roof-Top Gas-Fired
- 125 Parking Spaces
- Traffic: Great Rd - 17,000 ADT | I-495 - 117,000 ADT



# Donelan's Shopping Center

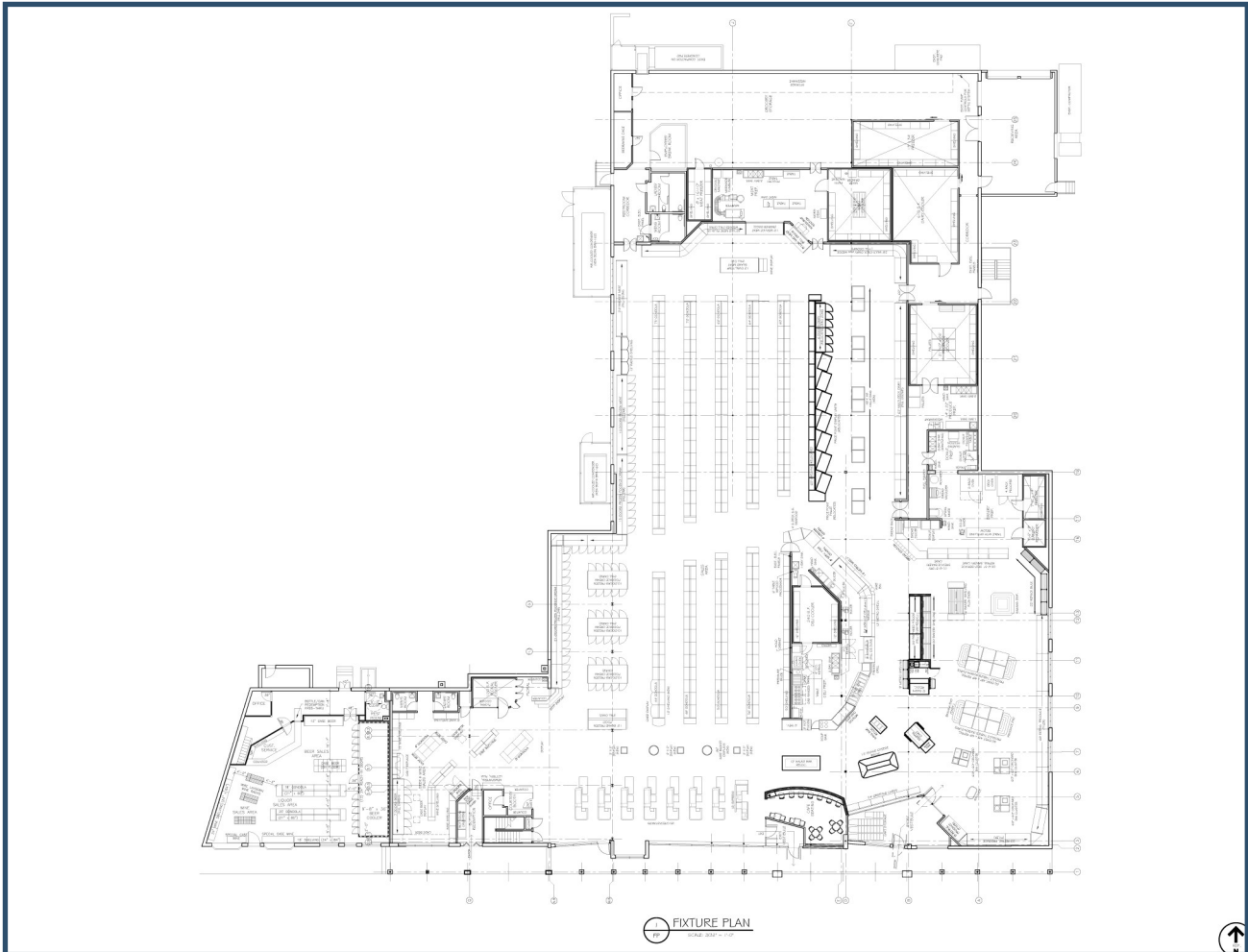
224-240 Great Road | Littleton, MA



2025 Demographics	3 Miles	5 Miles	10 Miles
Estimated Population	19,484	57,452	263,168
Estimated Households	7,206	21,180	95,911
Estimated Daytime Employees	13,849	28,944	126,034
Estimated Average Household Income	\$171,946	\$174,072	\$155,978

## Donelan's Shopping Center

224-240 Great Road | Littleton, MA



## Contact Us



Dusty Burke | 508-735-6378 | [dusty@acreco.com](mailto:dusty@acreco.com)



Dusty Burke, III | 508-735-5976 | [dusty3@acreco.com](mailto:dusty3@acreco.com)

### American Commercial Real Estate

50 Ledgeview Way #2415, Wrentham, Massachusetts 02093

Tel: (508) 735-6378 | E-mail: [dusty@acreco.com](mailto:dusty@acreco.com) | [www.acreco.com](http://www.acreco.com)