



OFFICE SPACE | **FOR LEASE**

1125 E. MOREHEAD STREET, SUITE 208 | CHARLOTTE

795 SF Second floor office suite offering efficient space along E. Morehead Street with easy access and abundant parking in a prime Dilworth location.

KEVIN MITCHELL
c 704 317 9245
kmitchell@mecacommercial.com

ZACH DANIEL, CCIM
c 704 560 1192
zdaniel@mecacommercial.com





PROPERTY INFORMATION

SF^{*}
975 SF

FEATURES

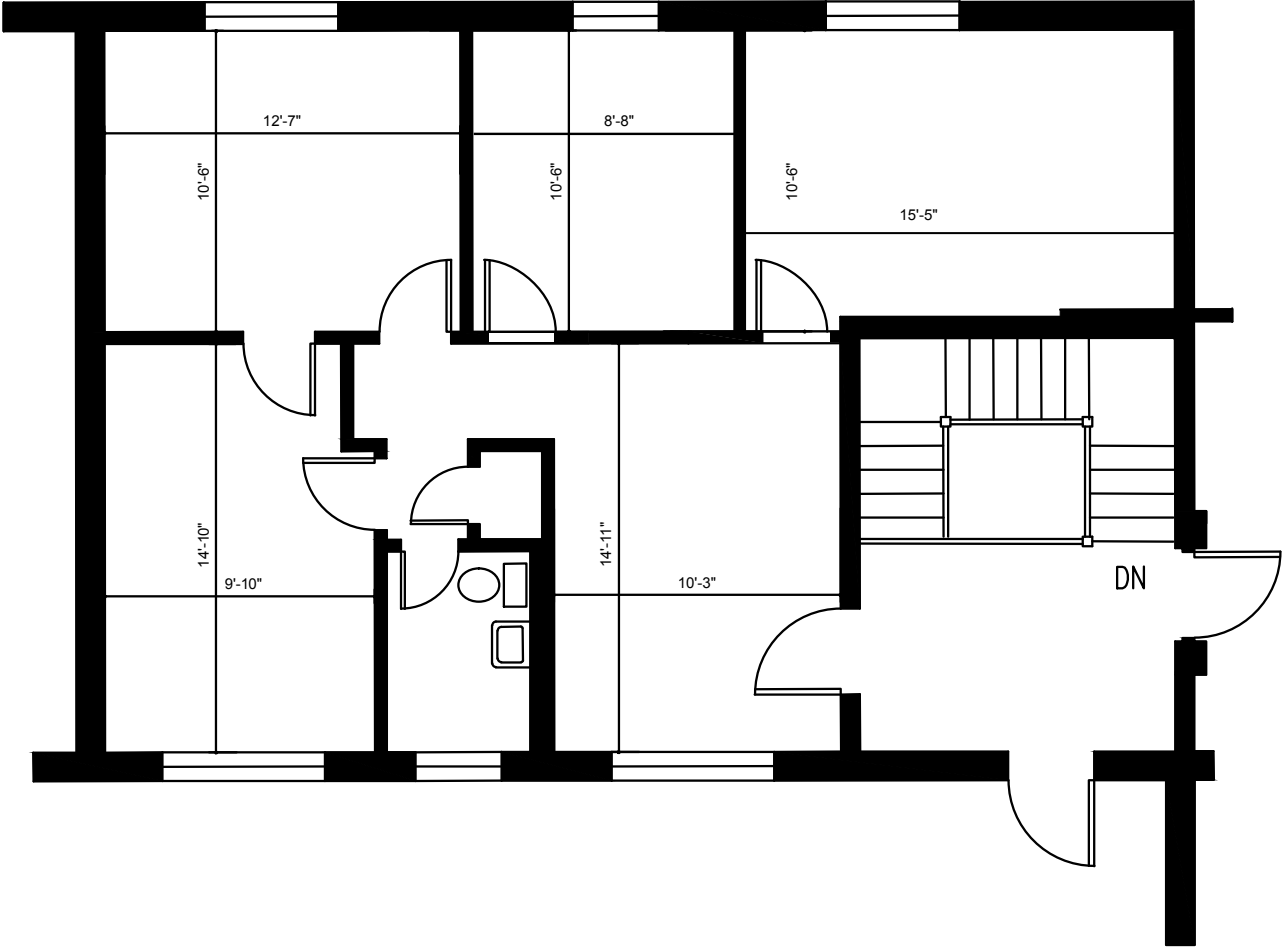
- Lobby and waiting area
- 4 Offices (91 - 145 SF)
- 1 Bathroom
- Abundant parking space
- Possibility to lease storage room in the building

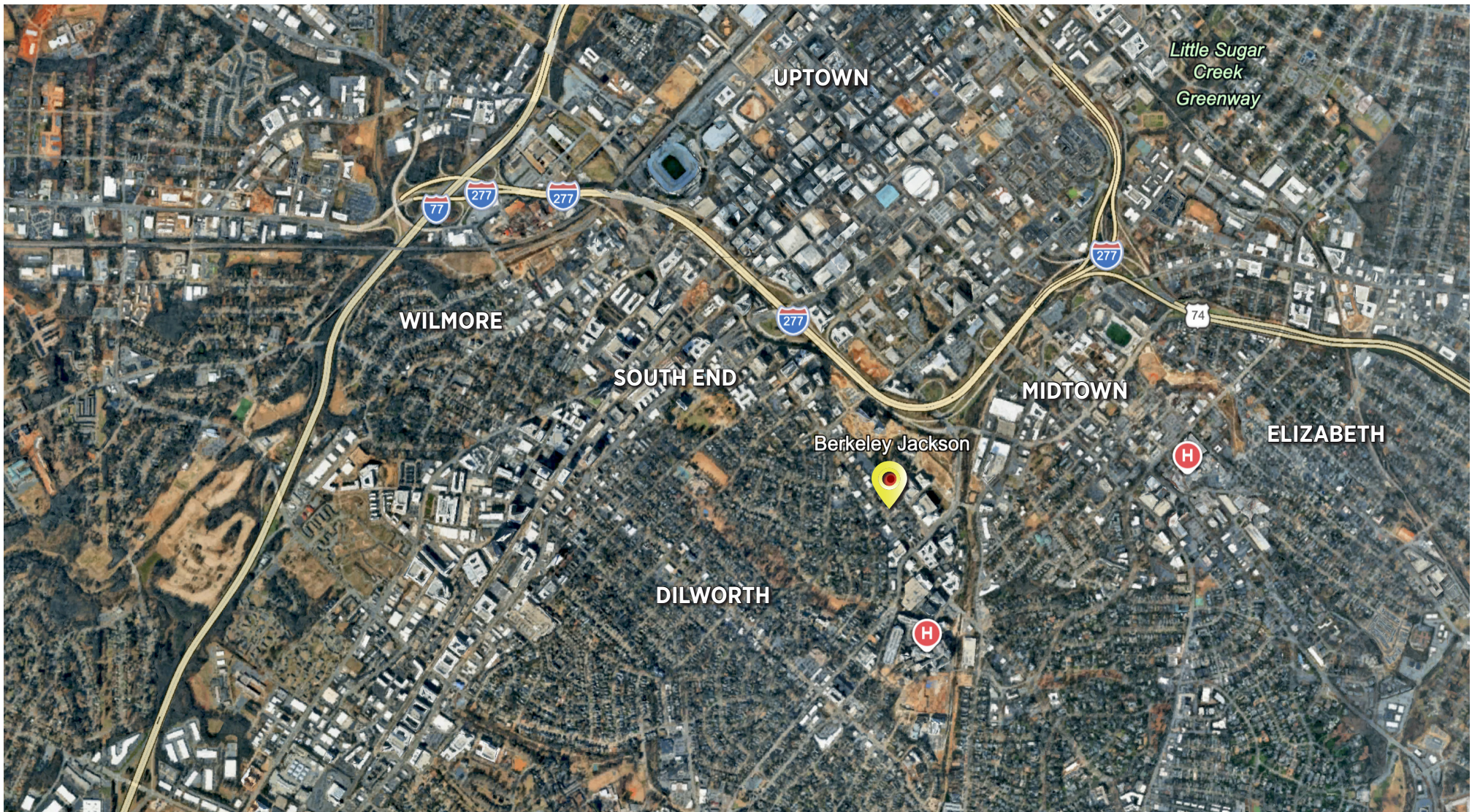
AVAILABILITY: Immediately

LEASE RATE: \$2,500/month Full Service



FLOOR PLAN





mecacommercial.com

© 2026 Metro Realty, LLC. All rights reserved. Metro Realty, LLC fully supports the principles of the Fair Housing Act and the Equal Opportunity Act.
*The land acreage and/or building square footage was obtained from the County's Geographical Information System or other electronic resources. For exact square footage and/or acreage, we recommend that prior to purchase, a prospective Buyer/Tenant obtain a boundary survey or have the building measured professionally.

KEVIN MITCHELL
c 704 317 9245
kmitchell@mecacommercial.com



ZACH DANIEL, CCIM
c 704 560 1192
zdaniel@mecacommercial.com

