



5,302 SF Available – Perfect For Daycare, Medical, or Office

7226 Castor Ave

Philadelphia, PA 19149



Walk Score
88



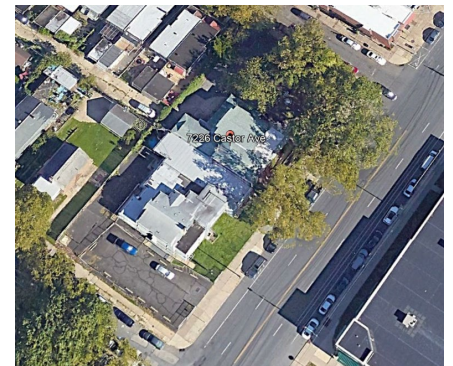
Transit Score
56



Bike Score
65

Property Highlights:

- Two-story building with 5,302 SF available
- Private outdoor space included
- Building is fully sprinklered
- Ample on-site parking
- Strategically located along the Fox Chase SEPTA Regional Rail line, and bus routes 59, 70 and 77.
- Nearby Amenities include the Great Northeast Plaza, Target, & Roosevelt Shopping Mall all within a 15-minute walking distance.



For information, please contact:

Michael Dolan

Senior Managing Director

t 215-561-8312

m 610-529-2079

mike.dolan@nmrk.com

One Commerce Square

2005 Market St., Suite 900

Philadelphia, PA 19103

t 215-561-8300

**Licensed in Pennsylvania as
Newmark Real Estate**