

CONSULTANTS

# MAGNOLIA OFFICE COMPLEX

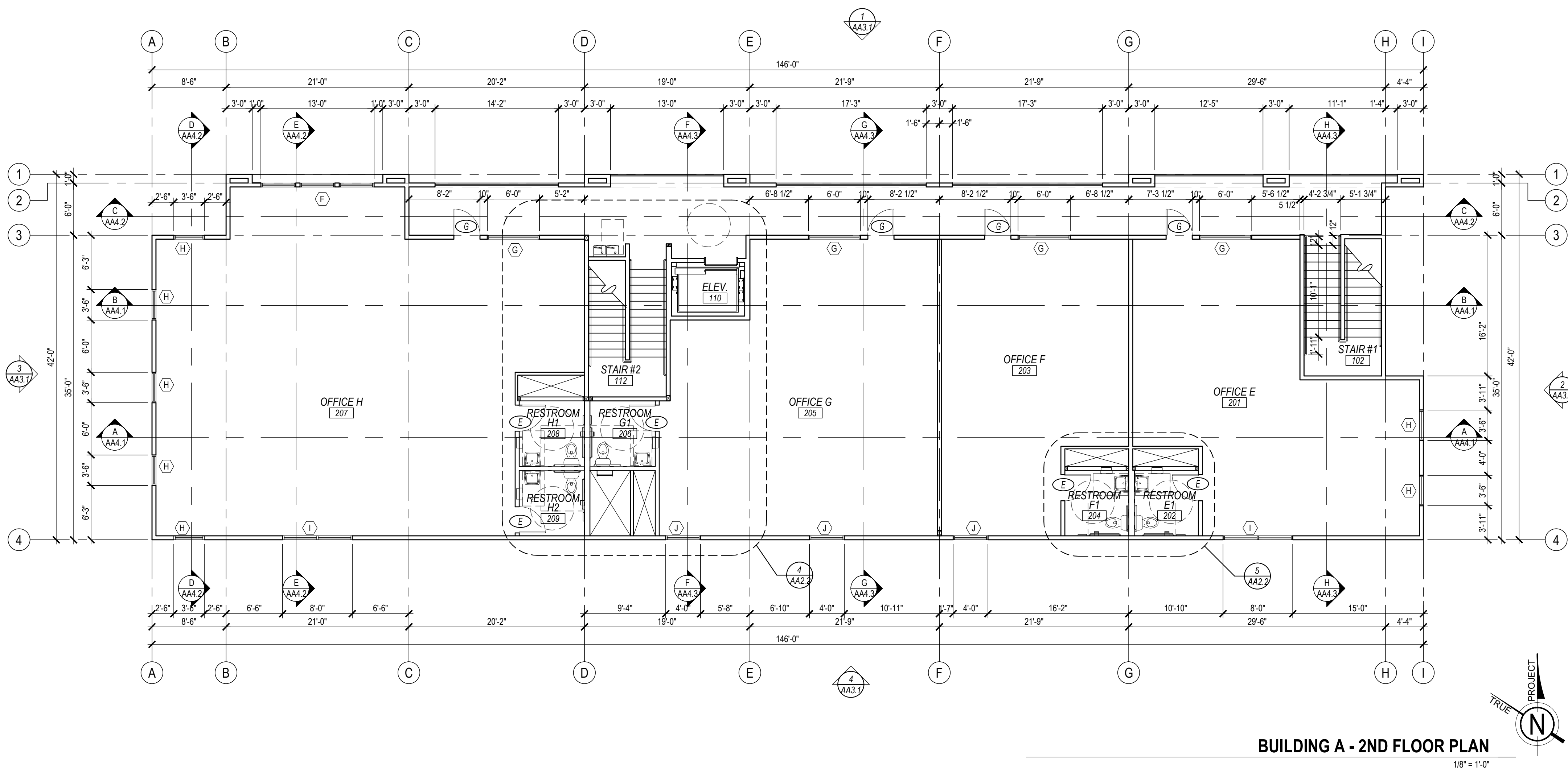
9644 MAGNOLIA AVE., RIVERSIDE CALIFORNIA 92503

THIS DRAWING AND THE DESIGN, ARRANGEMENTS, DEPICTIONS, IDEAS AND OTHER INFORMATION CONTAINED HEREIN, CONSTITUTE UNPUBLISHED WORK OF BROESKE ARCHITECTS & ASSOCIATES, INC. AND SHALL REMAIN THE PROPERTY OF BROESKE ARCHITECTS & ASSOCIATES, INC. IN PERPETUITY. NO PART THEREOF SHALL BE REPRODUCED, COPIED, DISCLOSED, DISTRIBUTED, SOLD, PUBLISHED OR OTHERWISE USED IN ANY MANNER WITHOUT THE EXPRESS WRITTEN CONSENT OF BROESKE ARCHITECTS & ASSOCIATES, INC. VISUAL CONTACT WITH THE ABOVE DRAWINGS, OR ANY PART THEREOF, SHALL CONSTITUTE CONCLUSIVE EVIDENCE OF ACCEPTANCE OF THESE RESTRICTIONS.

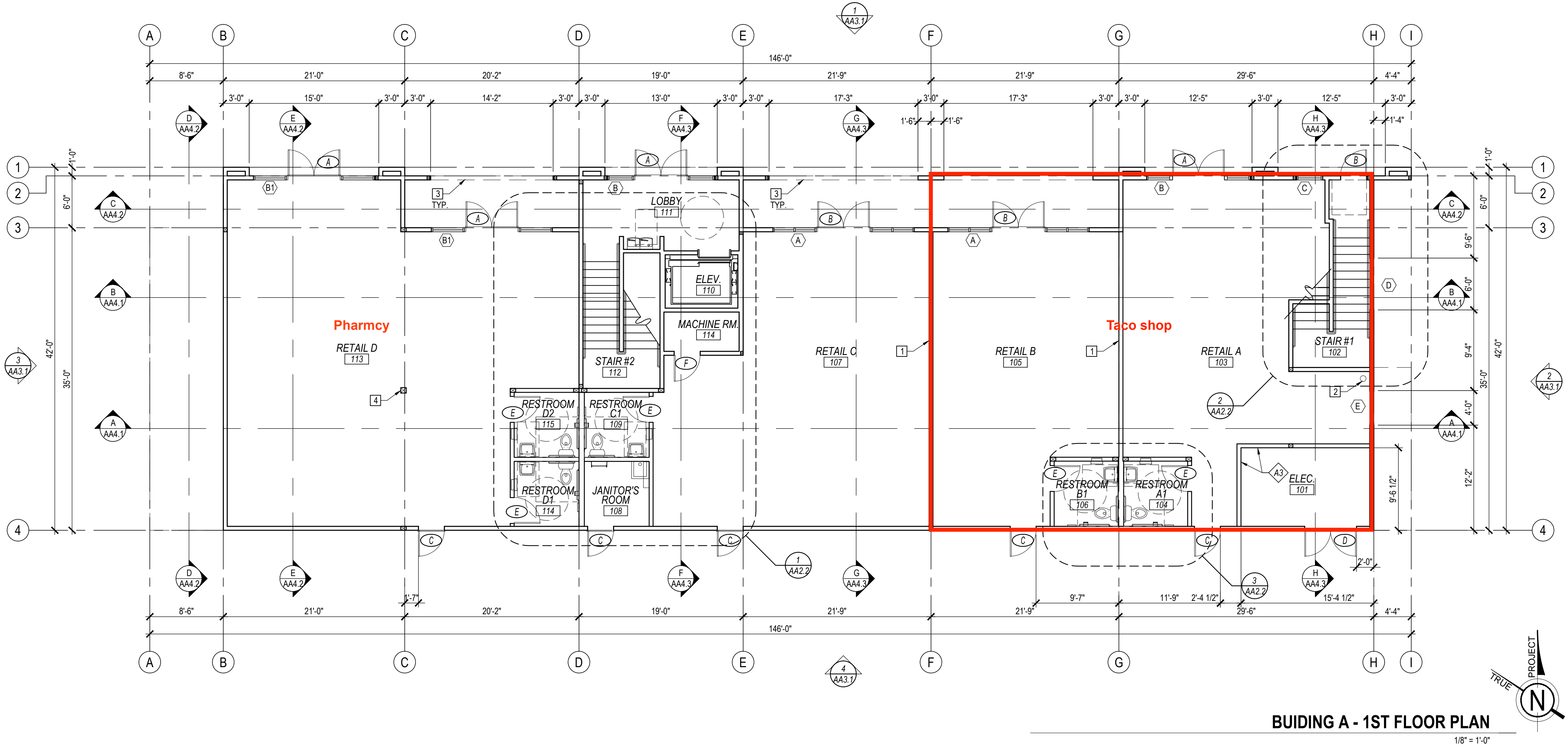
API	234-101-028
JOB NO.	16-034
DATE	12/15/2016
DRAWN BY	RS, GMH
CHECKED BY	JLB
SCALE	
REVISIONS	

SHEET TITLE  
BLDG. 'A'  
FLOOR PLAN

SHEET NO.  
AA2.1



BUILDING A - 2ND FLOOR PLAN  
1/8" = 1'-0"



BUILDING A - 1ST FLOOR PLAN  
1/8" = 1'-0"

FLOOR PLAN KEYNOTES - BLDG. A

- 1 NEW WD. STUD TENANT PARTITION w/ 5/8" GYP. BD. EA. SIDE TO UNDERSIDE OF FLOOR ADV.
- 2 FIRE RISER, SEE PLUMBING DRAWINGS
- 3 FLOOR LINE ABOVE
- 4 COLUMN, SEE STRUCTURAL

WALL LEGEND

- 2 X 6 WOOD STUD WALL (UNLESS NOTED OTHERWISE), SEE STRUCTURAL FINISH PER SCHEDULE & BATT INSULATION
- A1 2 X 4 WOOD STUD WALL, SEE STRUCTURAL
- A2 2 X 8 WOOD STUD WALL, SEE STRUCTURAL
- A3 1 HR. RATED PARTITION 2x6 WOOD STUDS @ 16" O.C. w/ 5/8" TYPE 'X' GYP. BD. EAS. SIDE

- GENERAL NOTES:
- 1. CONTRACTOR SHALL PROPERLY DISPOSED OF ALL CONSTRUCTION DEBRIS AND DISCARDED MATERIALS.
  - 2. CONTRACTOR TO VERIFY CONDITIONS OF EXISTING ITEMS TO REMAIN. C.N. TO NOTIFY ARCHITECT OF INADEQUATE CONDITIONS.

INTERIOR ELEVATION KEY

- A DOOR TYPE - SEE DOOR SCHEDULE
- W WINDOW NUMBER - SEE WINDOW DOOR SCHEDULE