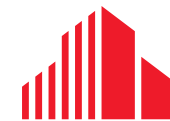


FOR LEASE

# 40 Clark Street

Salinas, California



CUSHMAN &  
WAKEFIELD

## OFFICE & WAREHOUSE SPACES FOR LEASE



### Lease Price \$1.40 PSF, Gross

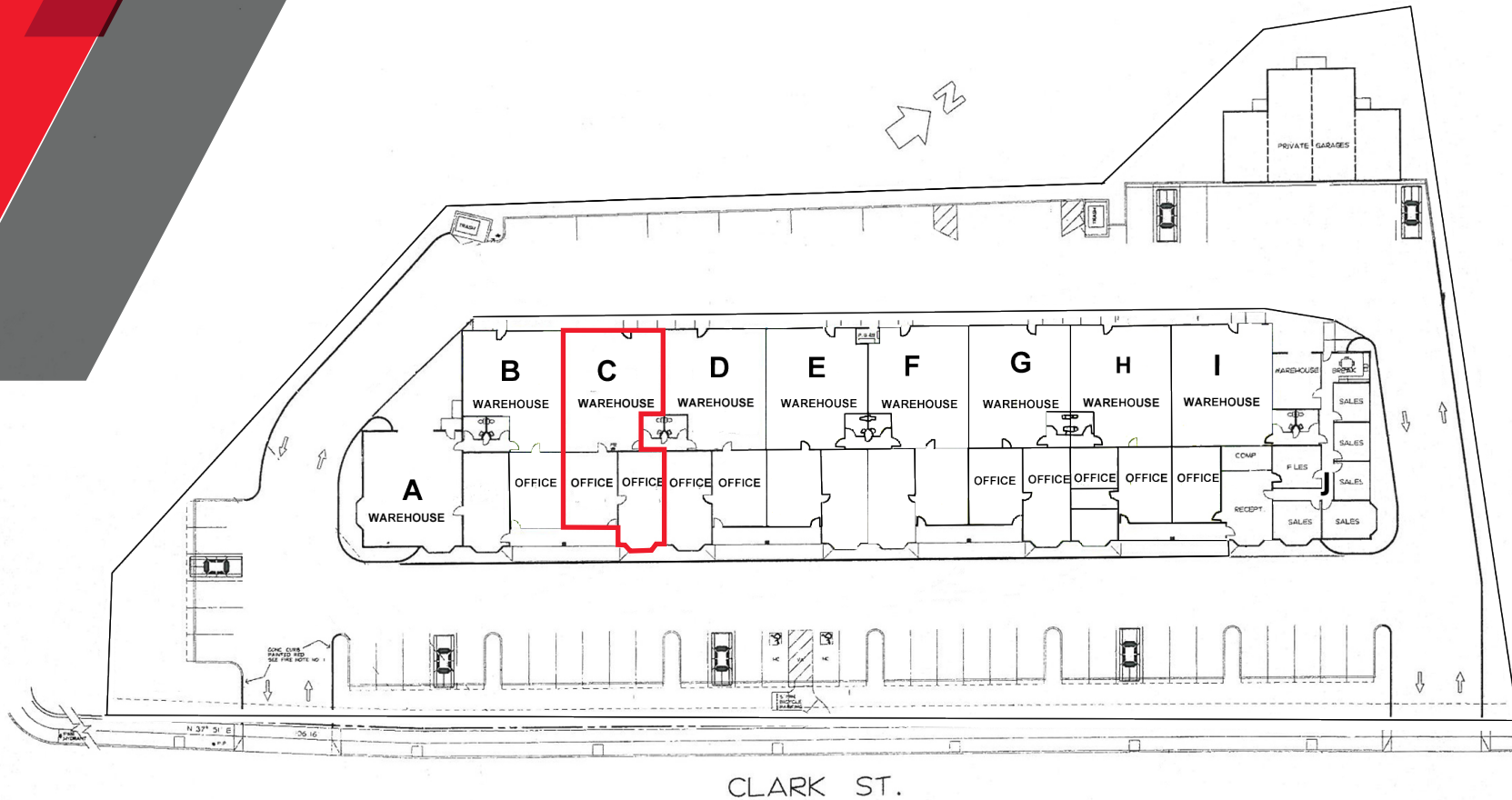
#### Available:

- Unit C - Approximately 2,292 SF (992 SF office + 1,300 SF warehouse)

#### Property Overview:

- Gated Access
- Incubator style R&D/Warehouse Project
- Newer Improvements
- Convenient Location
- Tenant is responsible for PG&E, phone, internet, interior janitorial and alarm

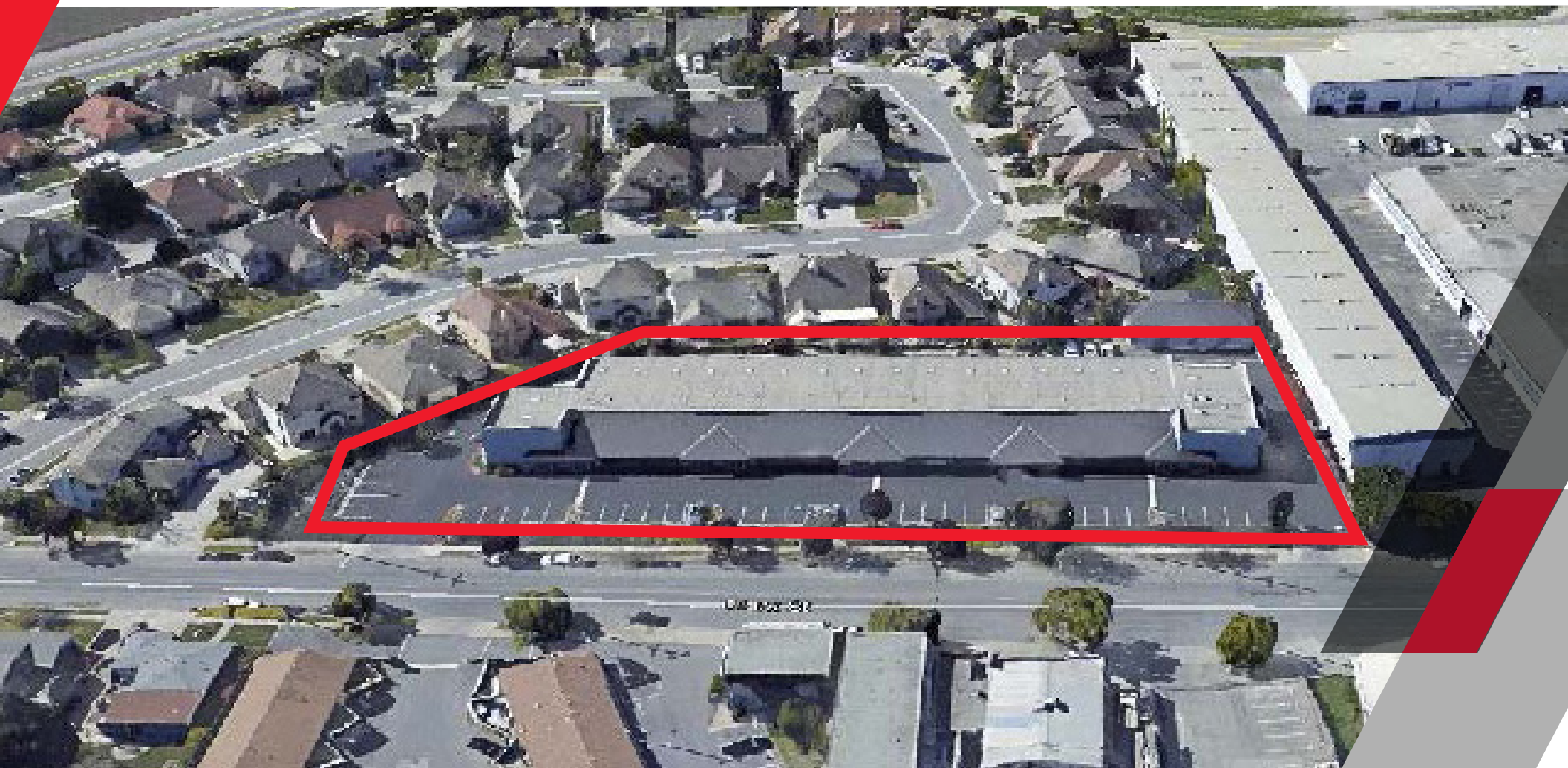




## SITE PLAN

<b>C</b>	<b>992 SF</b>	<b>1,300 SF</b>	<b>2,292 SF</b>
UNIT	OFFICE	WAREHOUSE	TOTAL

# AERIAL VIEW



For more information, contact:

**Greg Findley**  
Managing Director  
+1 831 755 1639  
[greg.findley@cushwake.com](mailto:greg.findley@cushwake.com)

**Michael Bassetti**  
Director  
+1 831 737 1124  
[michael.bassetti@cushwake.com](mailto:michael.bassetti@cushwake.com)

328-B Main Street  
Salinas, CA 93901  
T: +1 831 449 8000  
[cushmanwakefield.com](http://cushmanwakefield.com)

©2024 Cushman & Wakefield. All rights reserved. The information contained in this communication is strictly confidential. This information has been obtained from sources believed to be reliable but has not been verified. NO WARRANTY OR REPRESENTATION, EXPRESS OR IMPLIED, IS MADE AS TO THE CONDITION OF THE PROPERTY (OR PROPERTIES) REFERENCED HEREIN OR AS TO THE ACCURACY OR COMPLETENESS OF THE INFORMATION CONTAINED HEREIN, AND SAME IS SUBMITTED SUBJECT TO ERRORS, OMISSIONS, CHANGE OF PRICE, RENTAL OR OTHER CONDITIONS, WITHDRAWAL WITHOUT NOTICE, AND TO ANY SPECIAL LISTING CONDITIONS IMPOSED BY THE PROPERTY OWNER(S). ANY PROJECTIONS, OPINIONS OR ESTIMATES ARE SUBJECT TO UNCERTAINTY AND DO NOT SIGNIFY CURRENT OR FUTURE PROPERTY PERFORMANCE.