

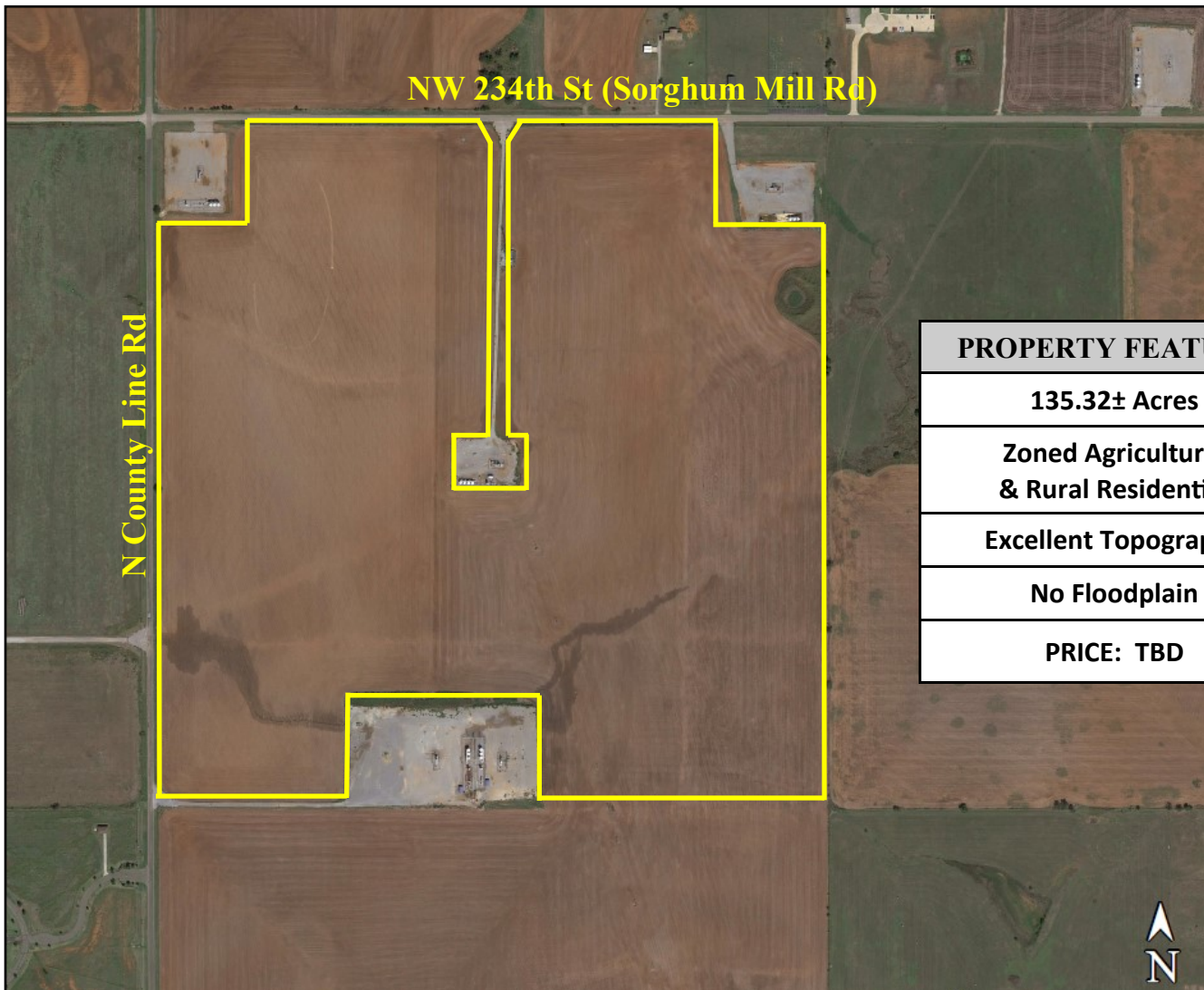
# Gerald L. Gamble Co.

*Commercial and Industrial Realtors*

204 N. Robinson, Suite 1450 Oklahoma City, OK 73102 Tel. 405-232-1138 Fax 405-239-6805 www.geraldgambleco.com

## FOR SALE - 135+ ACRES

*Southeast Corner of  
NW 234th St (Sorghum Mill Rd) & County Line Rd  
Oklahoma County, OK*



### PROPERTY FEATURES

135.32± Acres

Zoned Agricultural  
& Rural Residential

Excellent Topography

No Floodplain

PRICE: TBD



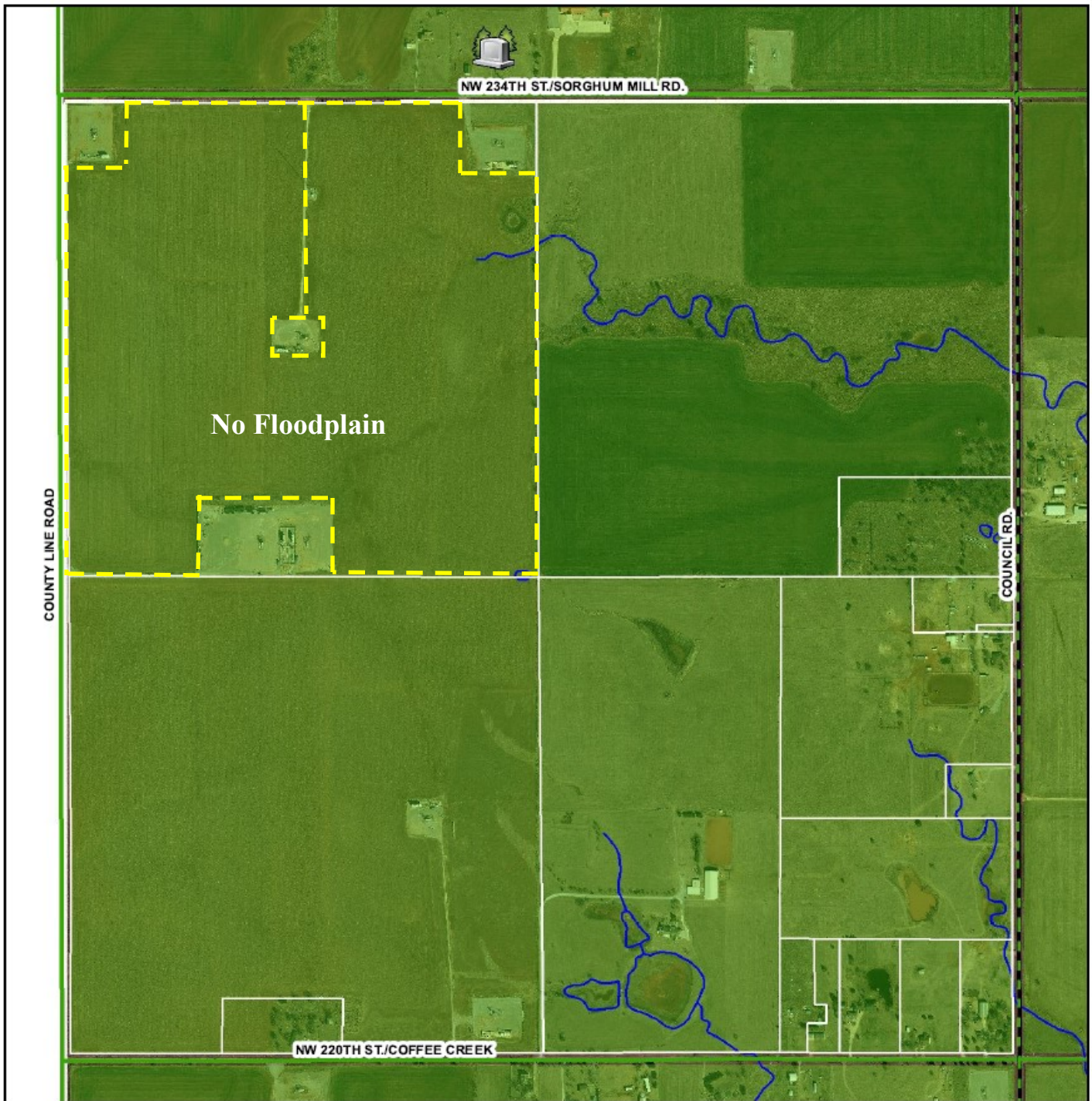
*For Further Information Contact  
Gerald Gamble (405)232-1138  
[gambleokc@geraldgambleco.com](mailto:gambleokc@geraldgambleco.com)*



The above statements, while not guaranteed, are from sources believed to be reliable.  
Offered subject to sale, change or withdrawal.







# Oklahoma County Zoning & Flood Zone Map

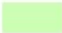



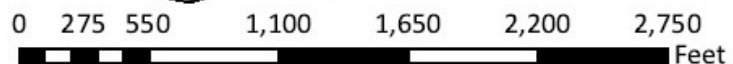
## Legend

### FLOOD ZONE

-  0.2 PCT ANNUAL CHANCE FLOOD HAZARD
-  A
-  AE
-  FLOODWAY

### Zoning

-  Agricultural and Rural Residential
-  Cemetery



# Topography

