

CORPORATE RESEARCH CENTER

2ND FLOOR OFFICE SPACE $\pm 15,661$ SF - $\pm 28,793$ SF



26460 CORPORATE AVENUE, HAYWARD, CALIFORNIA

NEWMARK

STEVE KAPP, SIOR
510.543.7822
steve.kapp@nrmk.com
CA RE License #01069911

CONOR RANAHAN
510.923.6204
conor.ranahan@nrmk.com
CA RE License #01850797

DAN DOWD, SIOR
510.300.0223
dan.dowd@nrmk.com
CA RE License #01432679

PROJECT HIGHLIGHTS



SECOND FLOOR

±15,661 SF AVAILABLE | EXPANDABLE TO ±28,793 SF

FEATURES

- Class A Corporate Identity Building
- Dramatic Lobby Entry
- Central Bay Area location next to San Mateo Bridge
- On Site Cafeteria and Outdoor Landscape Amenity Area
- Heavy Infrastructure (Power, Data, HVAC)
 - Former Applied Material Campus
- Parking Ratio 3/1,000



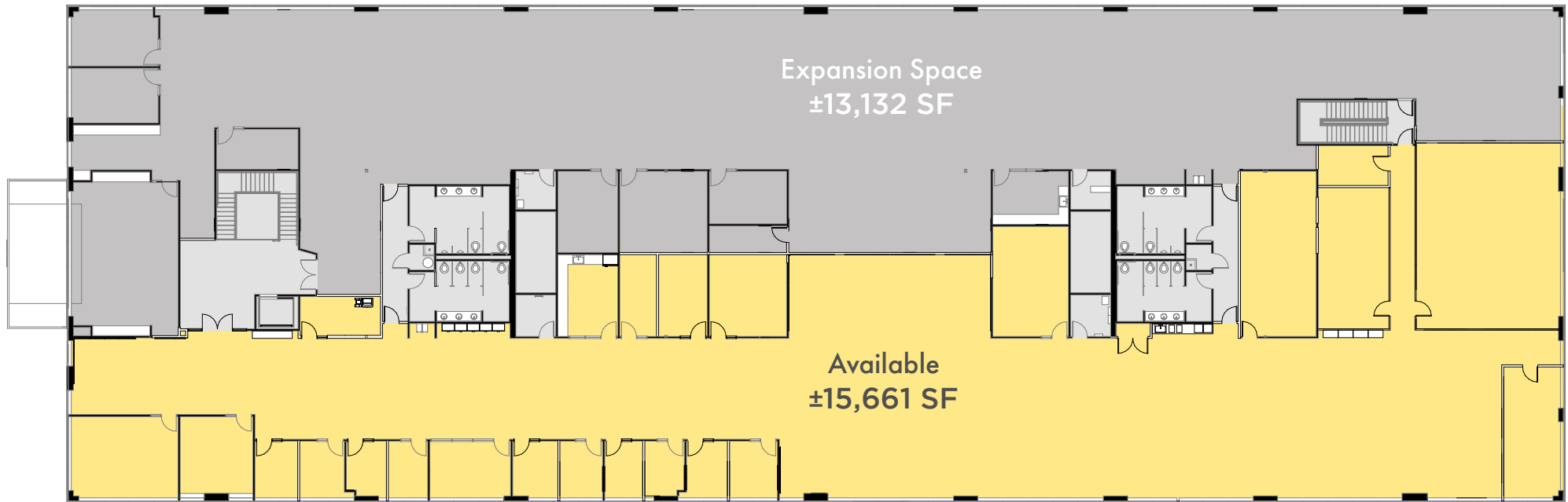
NEWMARK


26460 CORPORATE AVENUE, HAYWARD, CA

FLOORPLAN

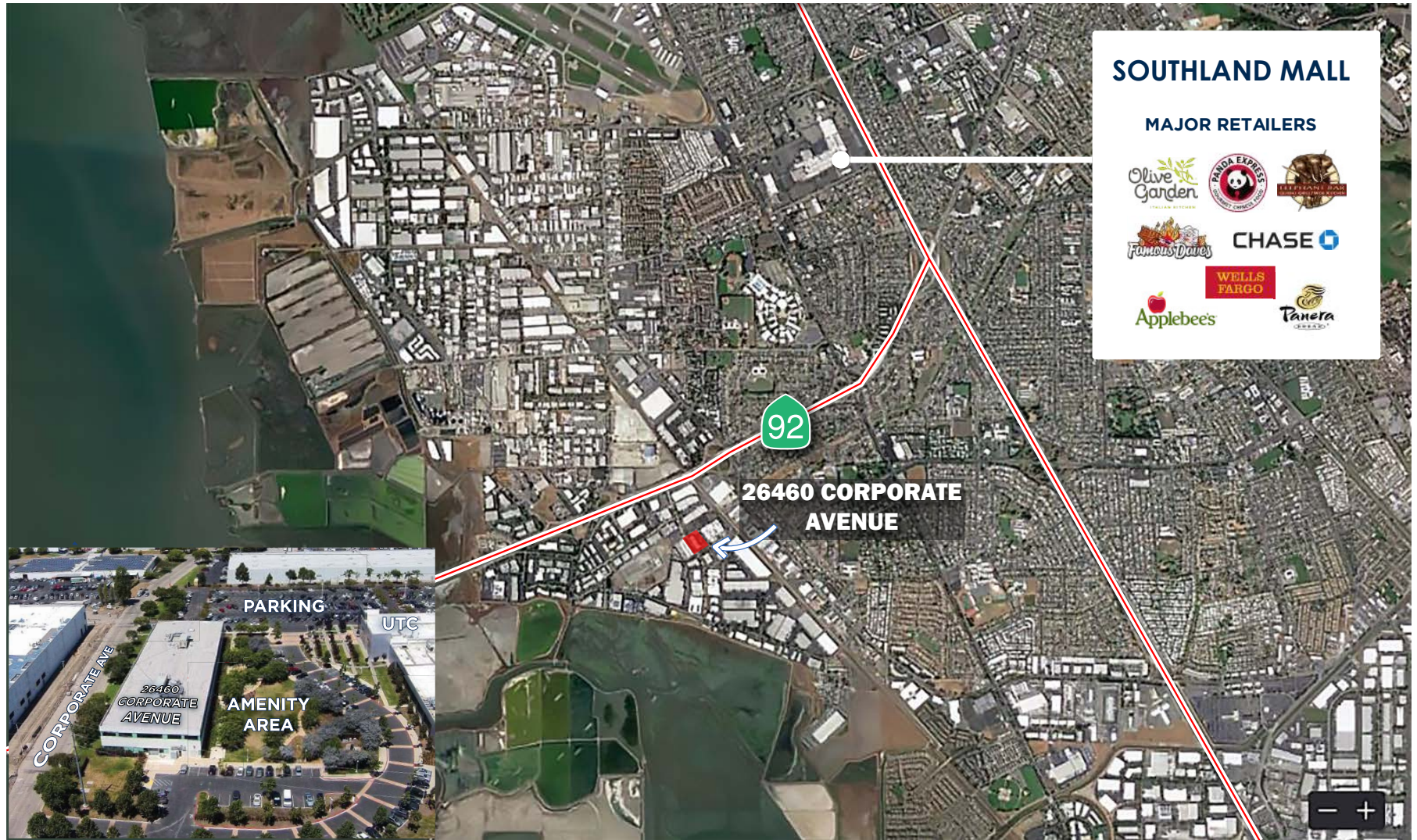
FEATURES

- 3 conference rooms
- 11 private offices
- Break room
- Double Door Entry off of Elevator Lobby
- High voltage power distributed through former "lab" space



AVAILABLE 
POTENTIAL EXPANSION 

AERIAL - NEARBY AMENITIES



CORPORATE RESEARCH CENTER

2ND FLOOR OFFICE SPACE ±15,661 SF - ±28,793 SF

STEVE KAPP, SIOR

510.543.7822
steve.kapp@nmrk.com
CA RE License #01069911

CONOR RANAHAN

510.923.6204
conor.ranahan@nmrk.com
CA RE License #01850797

DAN DOWD, SIOR

510.300.0223
dan.dowd@nmrk.com
CA RE License #01432679

26460 CORPORATE AVENUE, HAYWARD, CA

NEWMARK

The distributor of this communication is performing acts for which a real estate license is required. The information contained herein has been obtained from sources deemed reliable but has not been verified and no guarantee, warranty or representation, either express or implied, is made with respect to such information. Terms of sale or lease and availability are subject to change or withdrawal without notice. 17-0483.11/20