

Cass County Commons

3900 Lexington Rd, Logansport, IN 46947

One Space Available Inline; Up to 3,000 SF BTS



Property Information

Property Highlights:

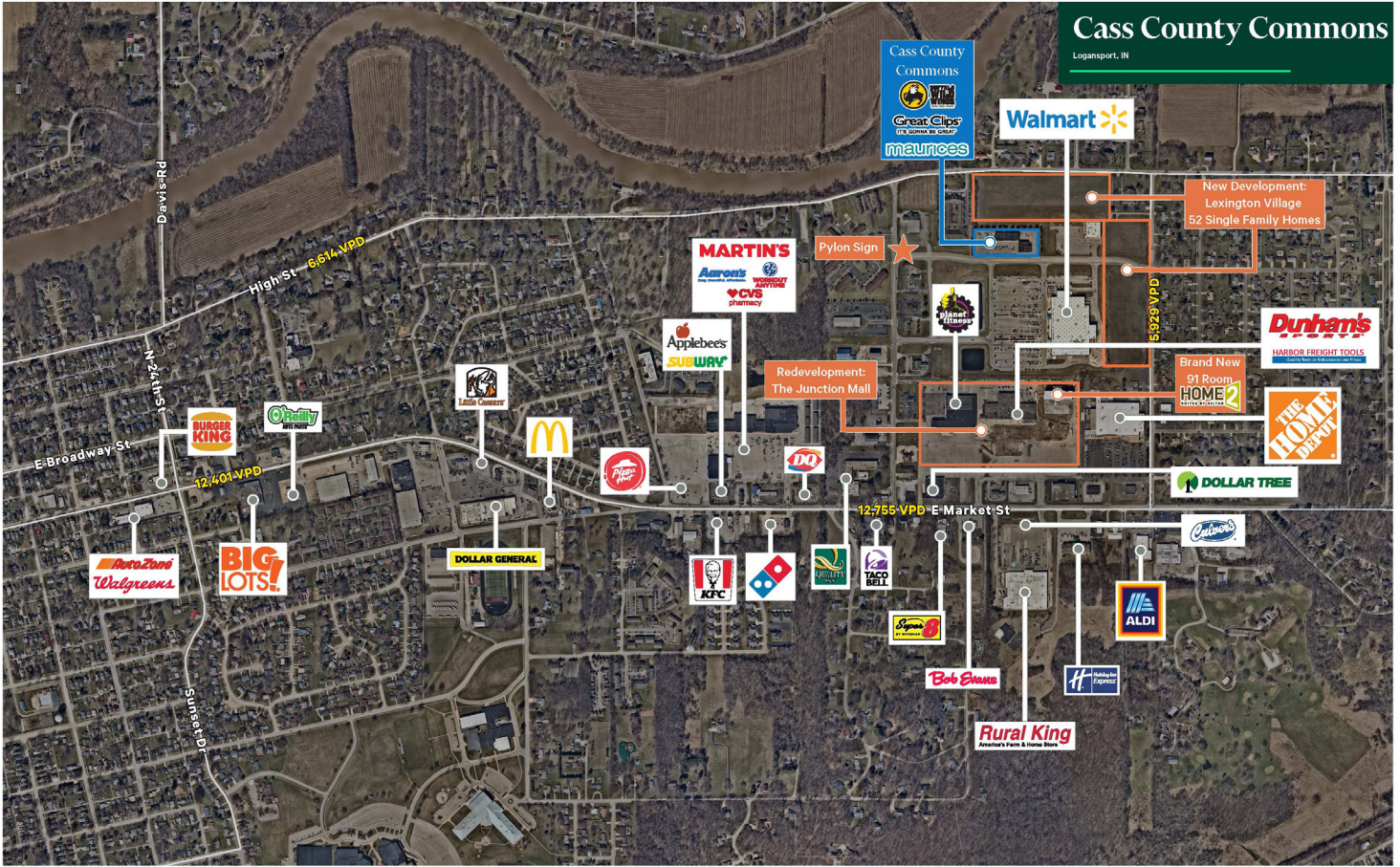
- + Join traffic driving co-tenants including Buffalo Wild Wings, Maurice's, Great Clips, and more.
- + Shadow anchor positioning to regional traffic driving 145,000 SF Walmart Supercenter.
- + Positioning amongst high profile new developments including:
 - The Junction mall redevelopment
 - Home 2 Suites by Hilton hotel - 91 rooms
- + Inline and pad opportunities available now!
 - +/- 3,780 SF demisable
 - +/- 3,000 SF pad opportunity



Cass County Commons

3900 Lexington Rd | Logansport, IN 46947

For Lease



Cass County Commons

Logansport, IN

© 2022 CBRE, Inc. All rights reserved. This information has been obtained from sources believed reliable, but has not been verified for accuracy or completeness. You should conduct a careful, independent investigation of the property and verify all information. Any reliance on this information is solely at your own risk. CBRE and the CBRE logo are service marks of CBRE, Inc. All other marks displayed on this document are the property of their respective owners, and the use of such logos does not imply any affiliation with or endorsement of CBRE. 410-639-1017/1/2022

CBRE



Walmart - Logansport

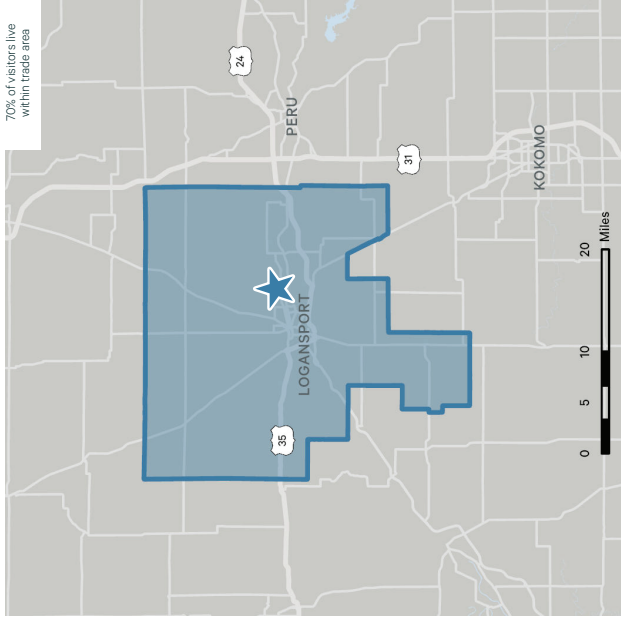
240 Mall Road, Logansport, IN 46947
 Study Period: Oct 2021 to Oct 2022

For Lease

Massive Mobile Data

Data sourced from a wide range of varied mobile apps (SDKs) providing a location analysis solution for location decisions that is dramatically changing the way retailers consider their market strategy. By analyzing sophisticated mobile data, we are creating an accurate picture of customers. Whether used for retail site selection, trade area analysis, marketing, or visitor profiling, mobile data is the most trusted solution for strategic marketplace analysis.

Trade Area

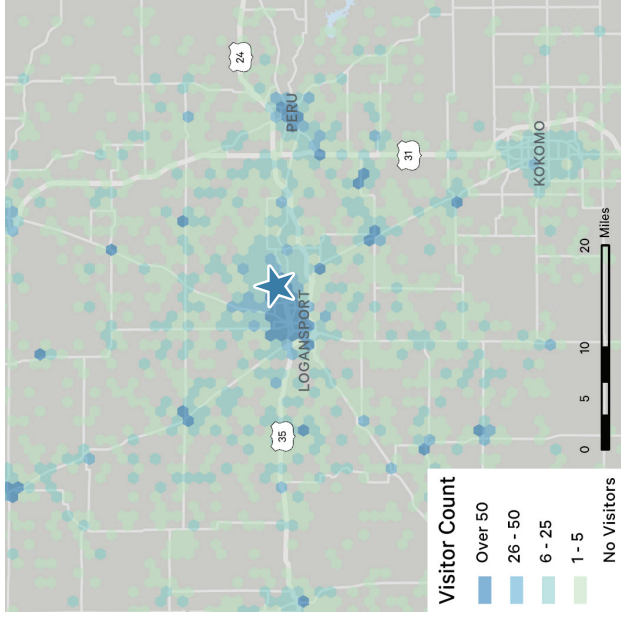


Trade Area Demographics

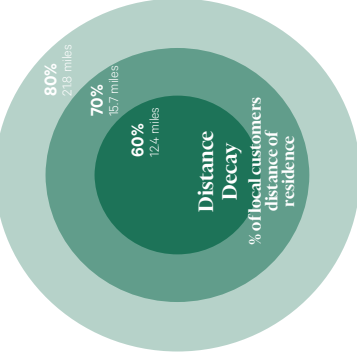
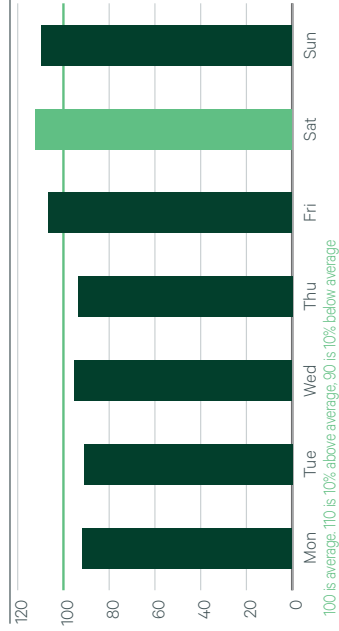
Total Population	34,023
Daytime Population	33,852
Population Growth (5 year)	-0.23%
Median Household Income	\$53,467
Avg Annual Retail Goods Spending* <small>By Household</small>	\$19,310
Total Households	13,352
Visitor Frequency <small>Return (55%) One-Time (45%)</small>	

Return: Visitors represent visitors that have returned to the site more than once over one year's time.

Common Evening Locations



Traffic by Day



Visitor Home Location



Weekly Traffic



2022 CBRE, Inc. This information has been obtained from sources believed reliable. We have not verified it and make no guarantee, warranty or representation about it. Any projections, opinions, or estimates used are for example only and do not represent the current or future performance of the property. You and your advisors should conduct a careful, independent investigation of the property to determine your satisfaction with the suitability of the property for your needs. CBRE and the CBRE logo are service marks of CBRE, Inc. and/or its affiliated or related companies in the United States and other countries. All other marks displayed on this document are the property of their respective owners. All Rights Reserved. 4104391 11/10/2022

New Development Nearby

- + Full revitalization of former Logansport Mall property including residential component - "The Junction"
- + The Junction:
 - 160,000 SF open air retail center
 - Tenants include Dunham's, Planet Fitness, Harbor Freight Tools and more to come
- + Newly built Home 2 Suites coming soon
- + Upcoming Lexington Village single family housing development
 - 52 single family lots



**Credit to Park Development LLC*



**Credit to Hotels.com*

Contact Us

Nate Delumpa

Associate
+ 1 317 269 1000 O
+ 1 317 613 3125 D
Nathaniel.Delumpa@cbre.com

CBRE Indianapolis

8888 Keystone Crossing
Suite 1000
Indianapolis, IN 46240
+ 1 317 269 1000

© 2022 CBRE, Inc. All rights reserved. This information has been obtained from sources believed reliable, but has not been verified for accuracy or completeness. You should conduct a careful, independent investigation of the property and verify all information. Any reliance on this information is solely at your own risk. CBRE and the CBRE logo are service marks of CBRE, Inc. All other marks displayed on this document are the property of their respective owners, and the use of such logos does not imply any affiliation with or endorsement of CBRE. Photos herein are the property of their respective owners. Use of these images without the express written consent of the owner is prohibited.