



Colliers

Accelerating Success

FOR LEASE

Starting at:

\$6.75

PSF, NNN

Contact us:

Nathan Monan

+1 501 850 0710

nathan.monan@ar.colliers.com

1 Allied Drive, Suite 1500,
Little Rock, AR 72202
P: +1 501 372 6161
colliers.com/arkansas

Showroom & Flex Space

For Lease: 6805 W 12th Street, Little Rock, AR

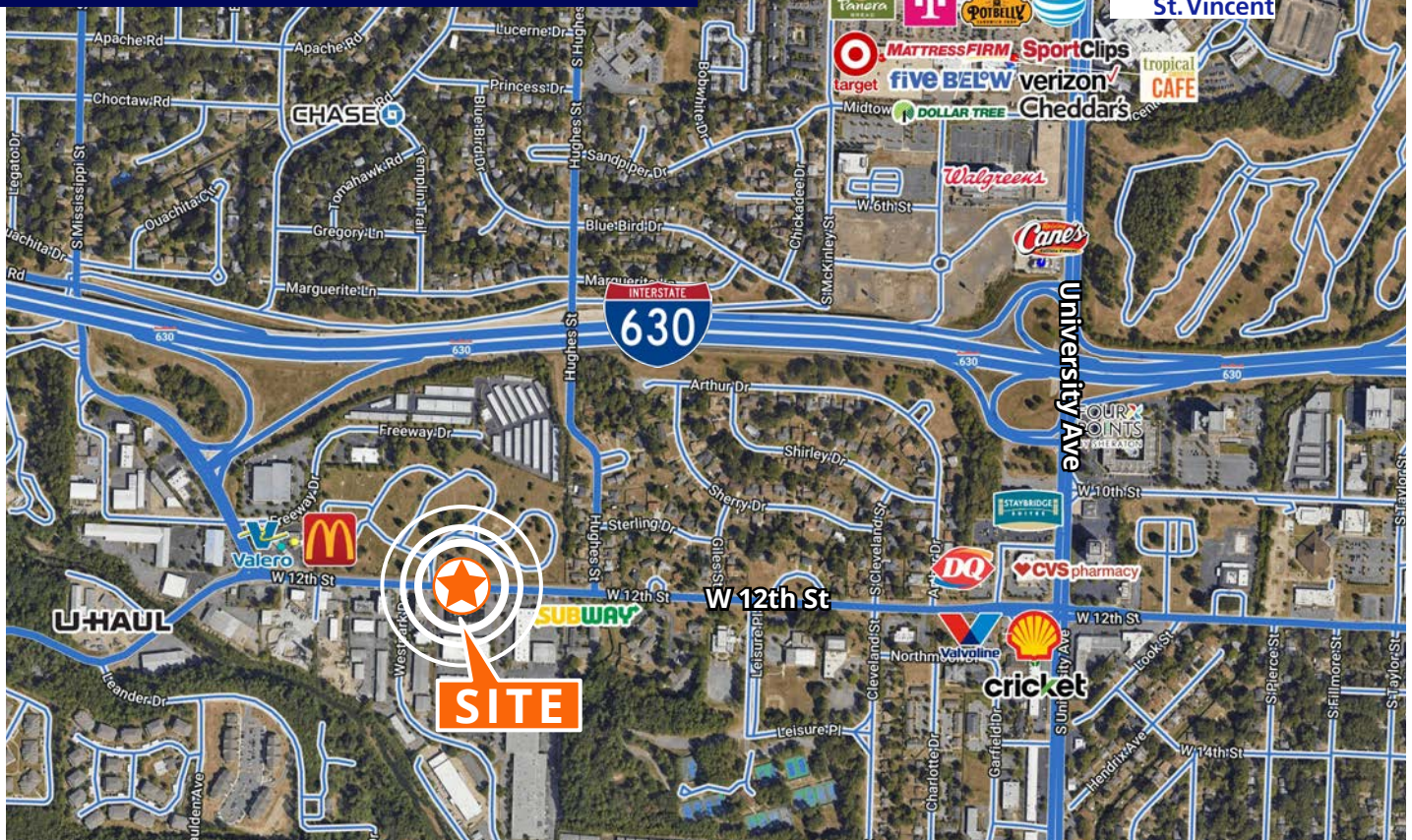
Features

- **Suite 6801A:** 2,400 SF @ \$12.00/SF, NNN (showroom space with roll-up door)
- **Suite H:** 6,000 SF @ \$6.75/SF, NNN (flex with 1,200 SF office in place)
- **Suite 6807C:** 4,567 SF @ \$6.75/SF, NNN (flex)
- **Suite 6807D:** 4,500 SF @ \$6.75/SF, NNN (flex)
- Suites 6807C & 6807D may be combined for 9,067 SF
- Flex spaces have dock-high doors
- Quick access to I-630
- Secured, gated parking available

Copyright © 2025 Colliers International.

Information herein has been obtained from sources deemed reliable, however its accuracy cannot be guaranteed. The user is required to conduct their own due diligence and verification.

Neighborhood Map



Contact us:

Nathan Monan

+1 501 850 0710

nathan.monan@ar.colliers.com

Colliers | AR

1 Allied Drive, Suite 1500

Little Rock, AR 72202

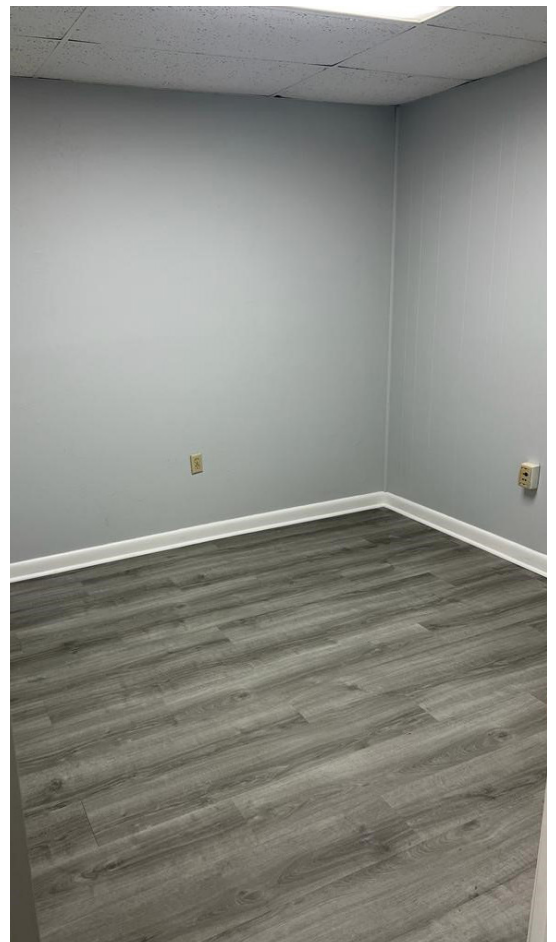
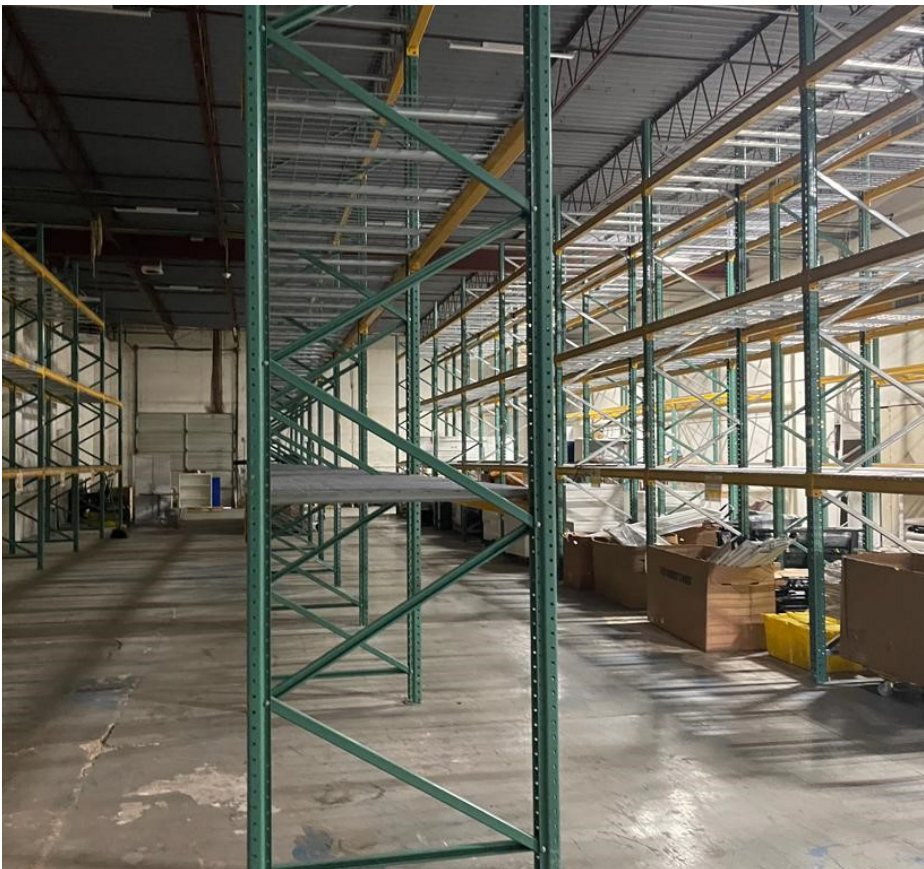
P: +1 501 372 6161

F: +1 501 372 0671

Copyright © 2025 Colliers International.

Information herein has been obtained from sources deemed reliable, however its accuracy cannot be guaranteed. The user is required to conduct their own due diligence and verification.

Property Photos



Property Photos

