

LA SIERRA PLAZA

±1,400 SF - ±2,879 SF SHOP SPACES FOR LEASE

3800-3870 La Sierra Ave, Riverside, CA 92505



ALBERT LOPEZ
 VP, Retail Leasing & Sales
 O: 909.230.4500 | C: 909.900.8922
 Albert@progressiverep.com
 DRE #01409003

PROGRESSIVE 
 REAL ESTATE PARTNERS

Presented By



ALBERT LOPEZ
VP, Retail Leasing & Sales

T 909.230.4500 | **C** 909.900.8922
Albert@progressiverep.com
CaIDRE #01409003

Confidentiality & Disclaimer

EACH PARTY SHALL CONDUCT ITS OWN INDEPENDENT INVESTIGATION AND DUE DILIGENCE

Any party contemplating a lease or sale transaction is urged to verify all information and to conduct their own inspections and investigations including through appropriate third party independent professionals selected by such party.

All financial data, building information, zoning information, demographics, and other information that a tenant or buyer may depend upon for making their business decisions should be verified and confirmed by the party including by obtaining and reading applicable documents and reports and consulting appropriate independent professionals. Any information contained in this marketing brochure was obtained from sources that we deemed reliable. While we do not doubt its accuracy, we do not make any guaranty, warranty, or representation about the accuracy of the information contained herein.

Progressive Real Estate Partners does not serve as a financial or business advisor to any party regarding any proposed transaction.

Legal questions should be discussed by the party with an attorney. Tax questions should be discussed by the party with a certified public accountant or tax attorney. Title questions should be discussed by the party with a title officer or attorney. Questions regarding the condition of the property and whether the property complies with applicable governmental requirements should be discussed by the party with appropriate engineers, architects, contractors, other consultants and governmental agencies.

Materials and information from any source, whether written or verbal, that may be furnished for review are not a substitute for a party's active conduct of its own due diligence to determine these and other matters of significance to such party.

PROPERTY OVERVIEW



PROPERTY HIGHLIGHTS

- Property is anchored by a high volume Cardenas Supermarket on one of the busiest intersections in Riverside.
- Located immediately across from Kaiser Permanente (4000 employees) and off the 91 FWY making this intersection of La Sierra Ave and Magnolia Ave visible to $\pm 88,330$ CPD.
- This retail hub services a high population of 142,320 within a 10 minute drive time.
- Magnolia Ave retail hub is the primary corridor that leads to Galleria at Tyler regional mall, and Downtown Riverside.
- $\pm 1,400$ SF - $\pm 2,879$ SF available for lease.



SITE PLAN



ADDITIONAL PHOTOS

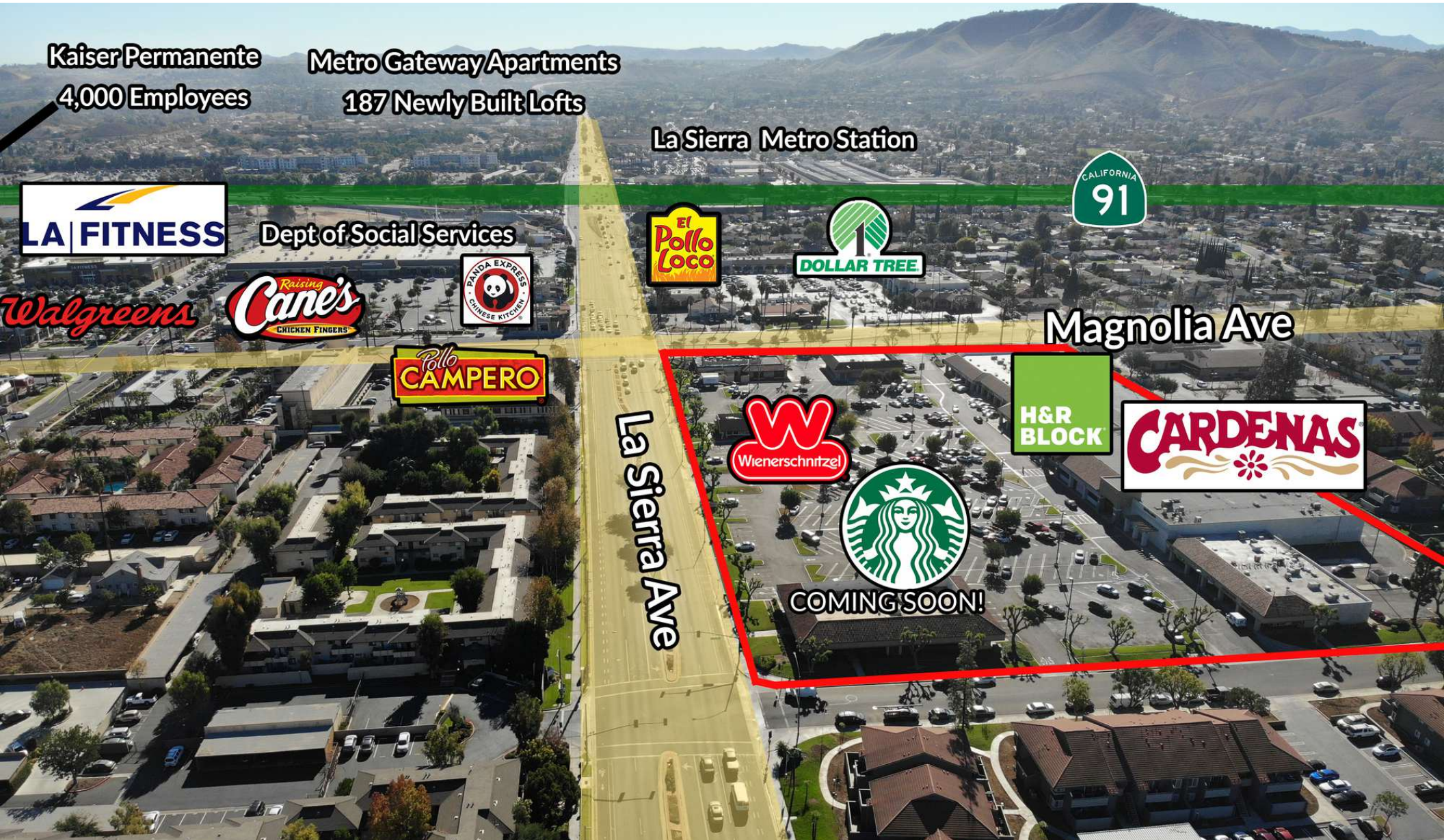


RETAILER MAP

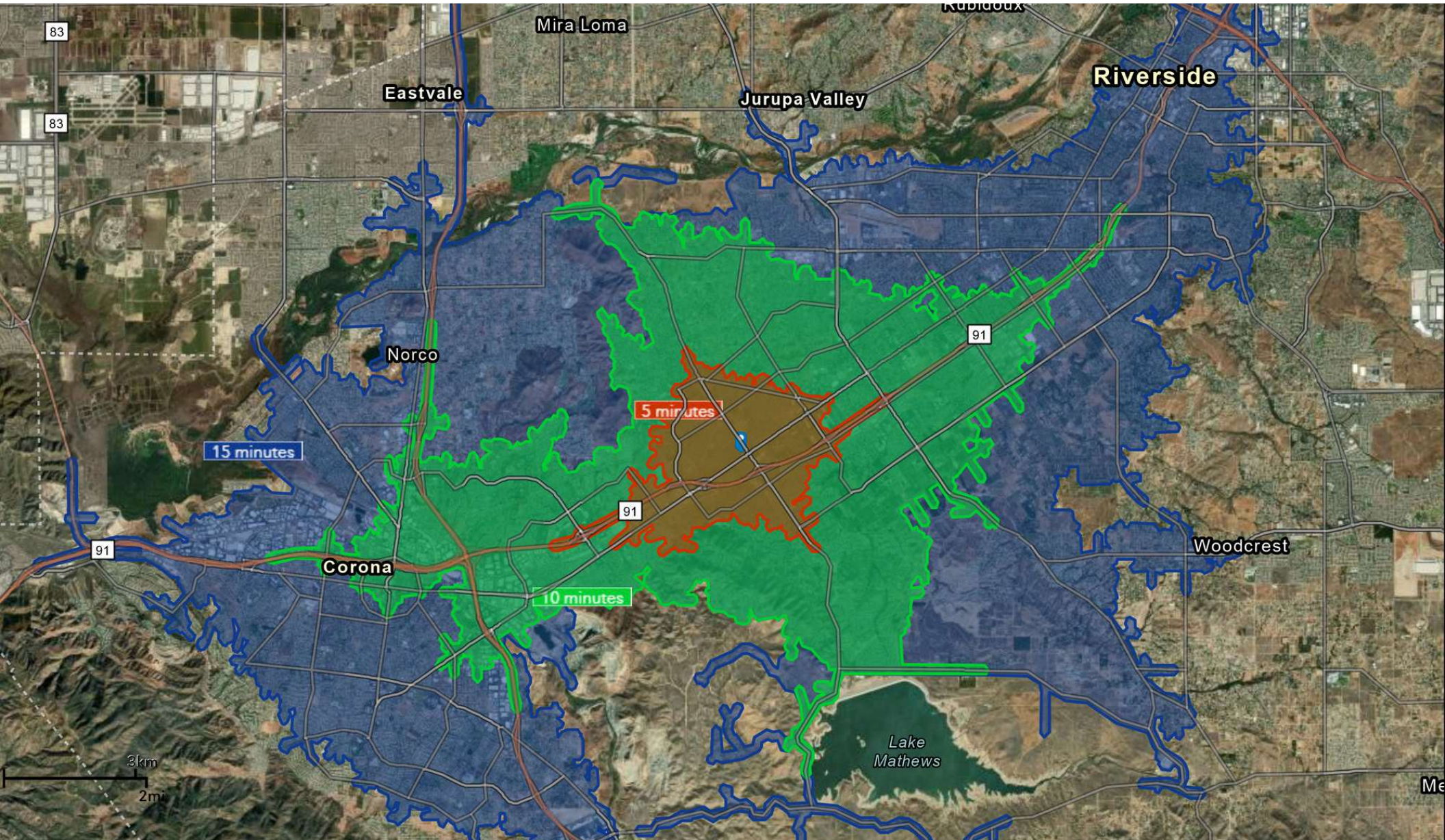


Map data ©2024 Google Imagery ©2024 Airbus, Data CSUMB SFML, CA OPC, Landsat / Copernicus, Maxar Technologies

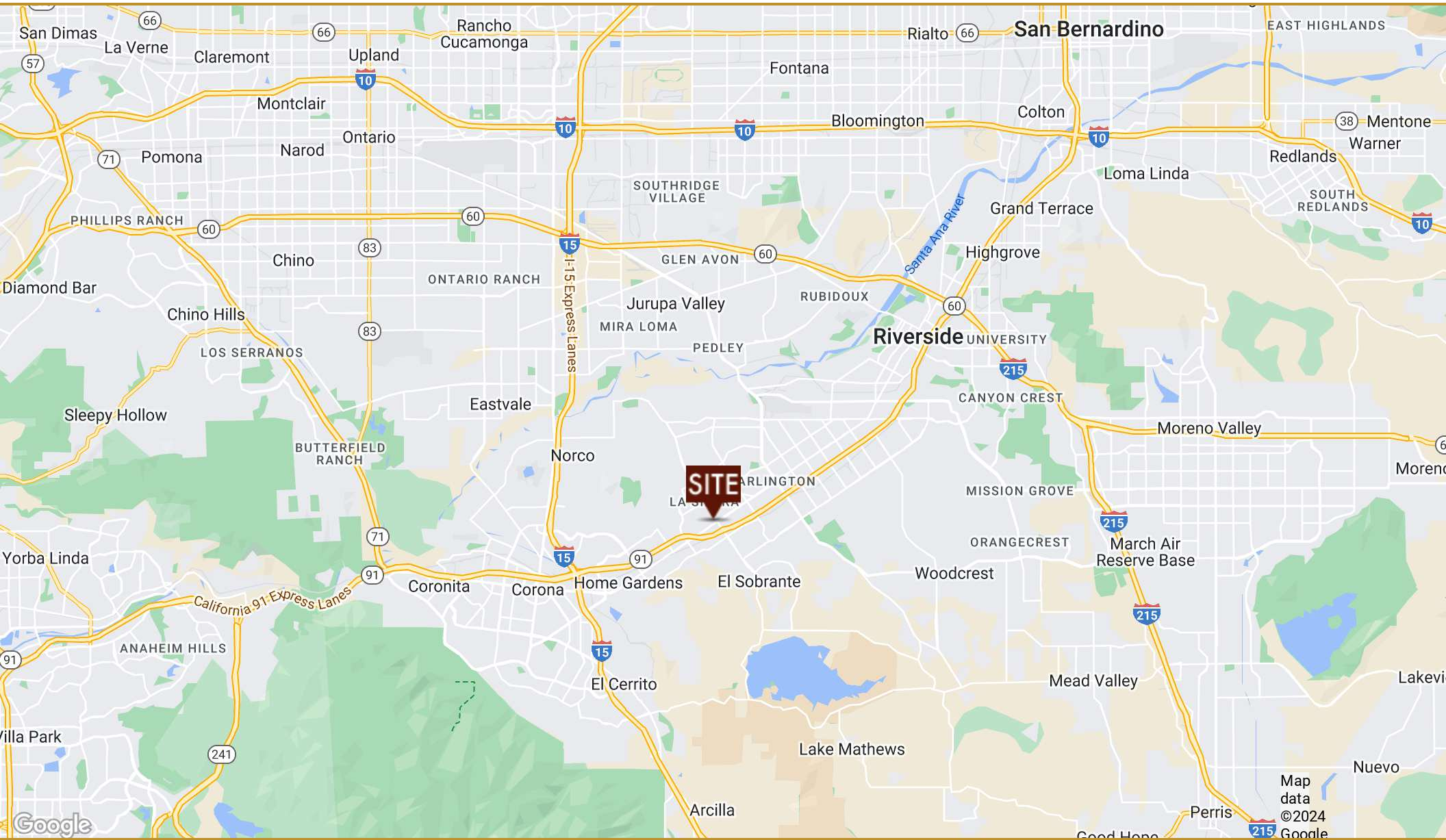
LOCATION AERIAL MAP



DRIVE TIME MAP



REGIONAL MAP



DEMOGRAPHICS

	5 min	10 min	15 min
POPULATION			
2023 Total Population	44,367	142,320	259,006
2023 Median Age	33.7	33.2	33.6
2023 Total Households	13,692	40,347	74,902
2023 Average Household Size	3.2	3.5	3.4
INCOME			
2023 Average Household Income	\$108,074	\$116,255	\$115,186
2023 Median Household Income	\$81,660	\$87,550	\$88,650
2023 Per Capita Income	\$33,436	\$33,097	\$33,444
BUSINESS SUMMARY			
2023 Total Businesses	2,195	5,069	11,803
2023 Total Employees	15,351	42,763	109,543