

# INDUSTRIAL/OFFICE FOR LEASE

423 S Horton Street  
Seattle, 98134



**Rob Gasca**

Cell: 425-766-3054  
robgasca@mapleleafmgmt.com

**Alex Ardiente**

Cell: 425 273 3386  
alex@mapleleafmgmt.com

**Rob Gasca Real Estate Group**  
www.robgasca.com

DISCLAIMER: The information on the following pages has been secured from sources believed to be reliable, however, no representations are made to its accuracy. Prospective tenants or buyers should consult their professional advisors and conduct their own independent investigation. Properties are subject to change in price and/or availability without notice.

423 S Horton Street, Seattle 98134

**Rob Gasca**

Cell: 425-766-3054  
robgasca@mapleleafmgt.com

**Alex Ardiente**

Cell: 425 273 3386  
alex@mapleleafmgt.com



Flexible industrial/office space in the heart of Seattle's historic Sodo neighborhood. Unit B consists of 3,000 square feet of industrial and newly renovated office space as well as a large mezzanine containing roughly 800 square feet. This unit possesses four garage door size loading docks ideal for distribution and a large private parking lot. Previous tenant was a masonry business, so space as is well suited for a business in production, construction, distribution, storage and import/export.

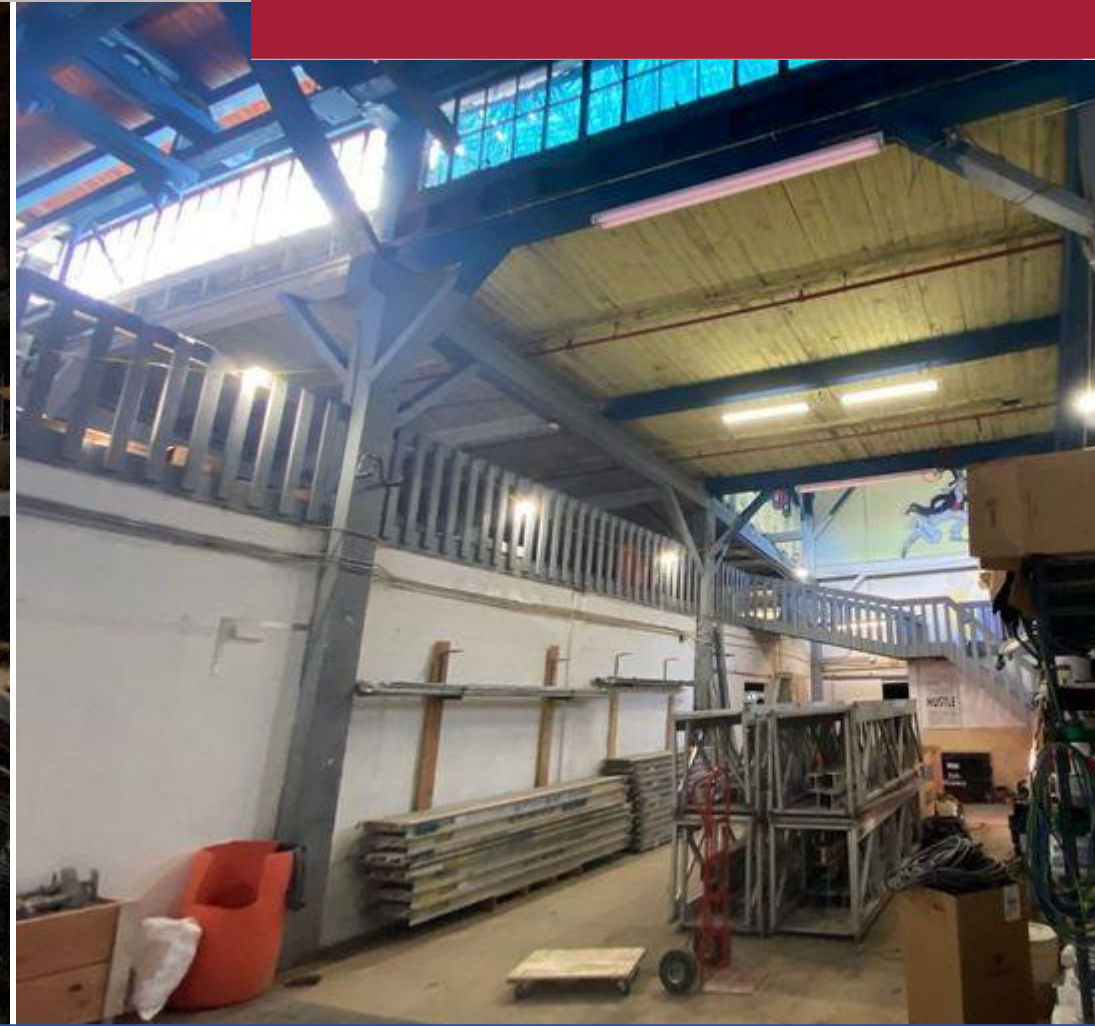
423 S Horton Street, Seattle 98134

**Rob Gasca**

Cell: 425-766-3054  
robgasca@mapleleafmgt.com

**Alex Ardiente**

Cell: 425 273 3386  
alex@mapleleafmgt.com



## Industrial Space



**Rob Gasca Real Estate Group**  
8809 Roosevelt Way NE, Seattle, WA 98115  
(206) 250-7367

[www.robgasca.com](http://www.robgasca.com)

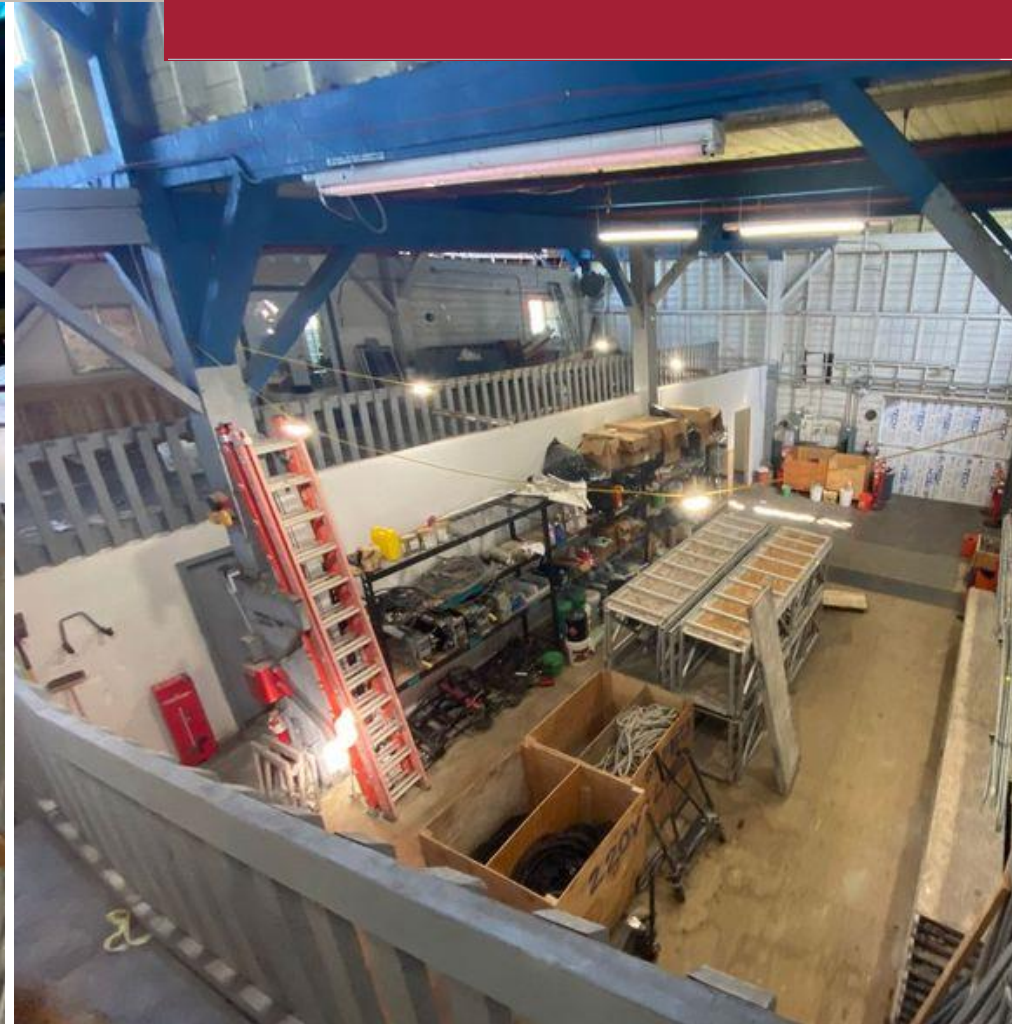
423 S Horton Street, Seattle 98134

**Rob Gasca**

Cell: 425-766-3054  
robgasca@mapleleafmgt.com

**Alex Ardiente**

Cell: 425 273 3386  
alex@mapleleafmgt.com



Industrial Space



Rob Gasca Real Estate Group  
8809 Roosevelt Way NE, Seattle, WA 98115  
(206) 250-7367

[www.robgasca.com](http://www.robgasca.com)

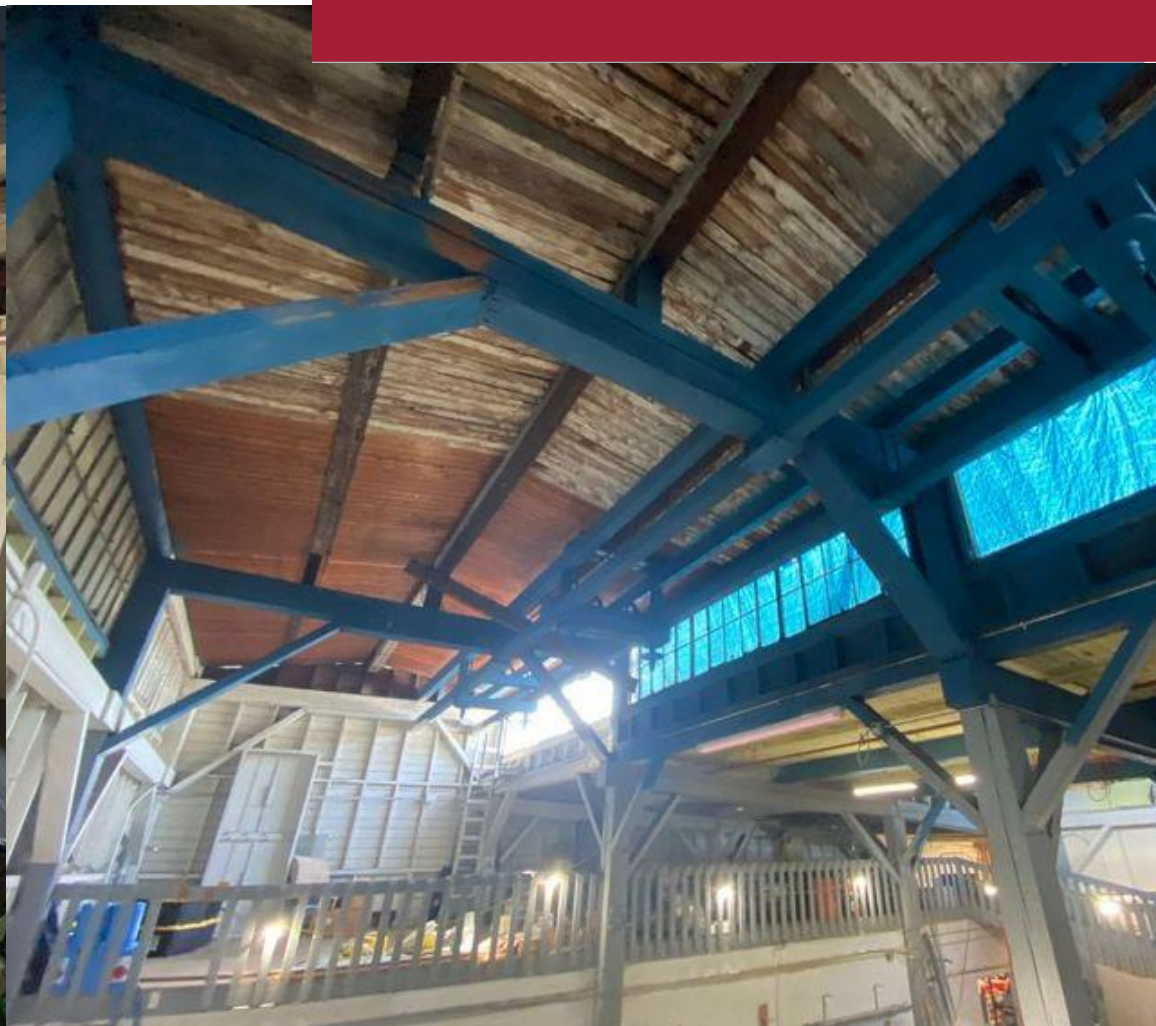
423 S Horton Street, Seattle 98134

**Rob Gasca**

Cell: 425-766-3054  
robgasca@mapleleafmgt.com

**Alex Ardiente**

Cell: 425 273 3386  
alex@mapleleafmgt.com



Mezzanine

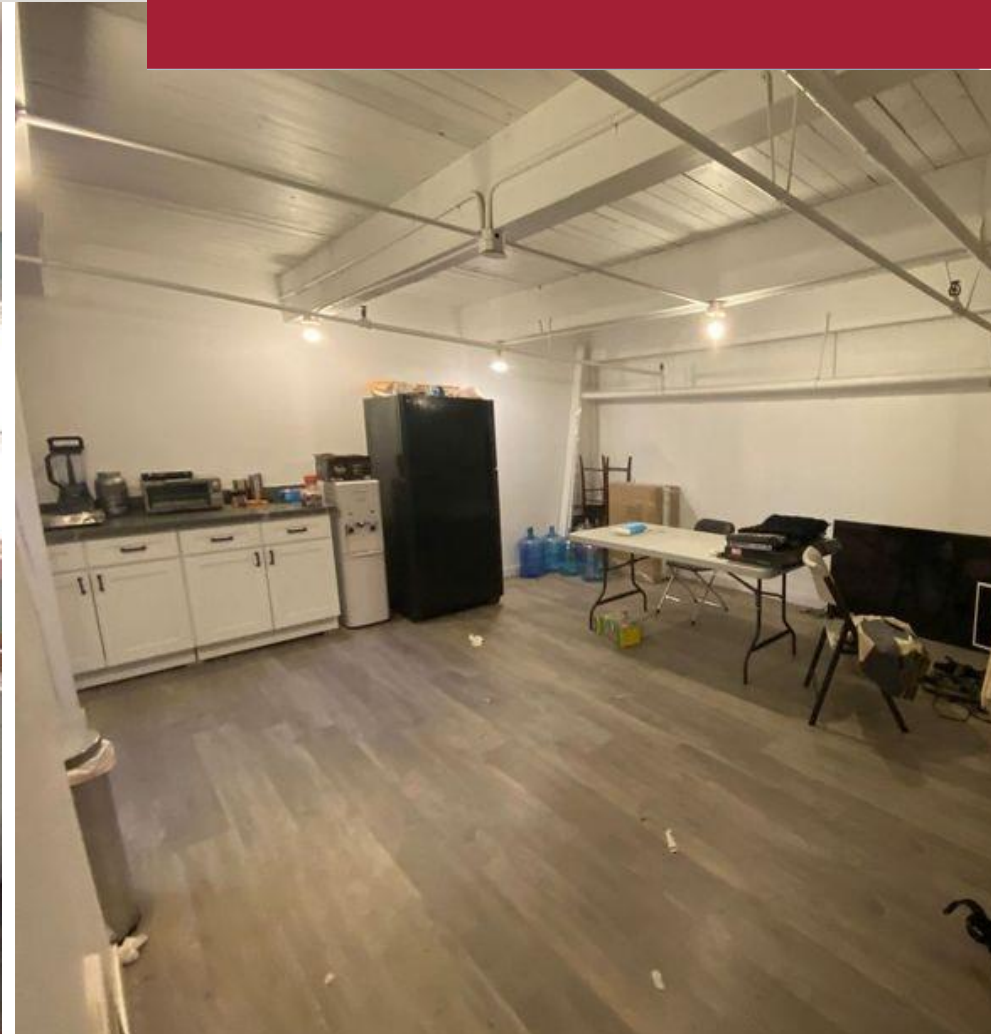
423 S Horton Street, Seattle 98134

**Rob Gasca**

Cell: 425-766-3054  
robgasca@mapleleafmgt.com

**Alex Ardiente**

Cell: 425 273 3386  
alex@mapleleafmgt.com



Office Space

423 S Horton Street, Seattle 98134

**Rob Gasca**

Cell: 425-766-3054  
robgasca@mapleleafmgt.com

**Alex Ardiente**

Cell: 425 273 3386  
alex@mapleleafmgt.com



Premises

423 S Horton Street, Seattle 98134

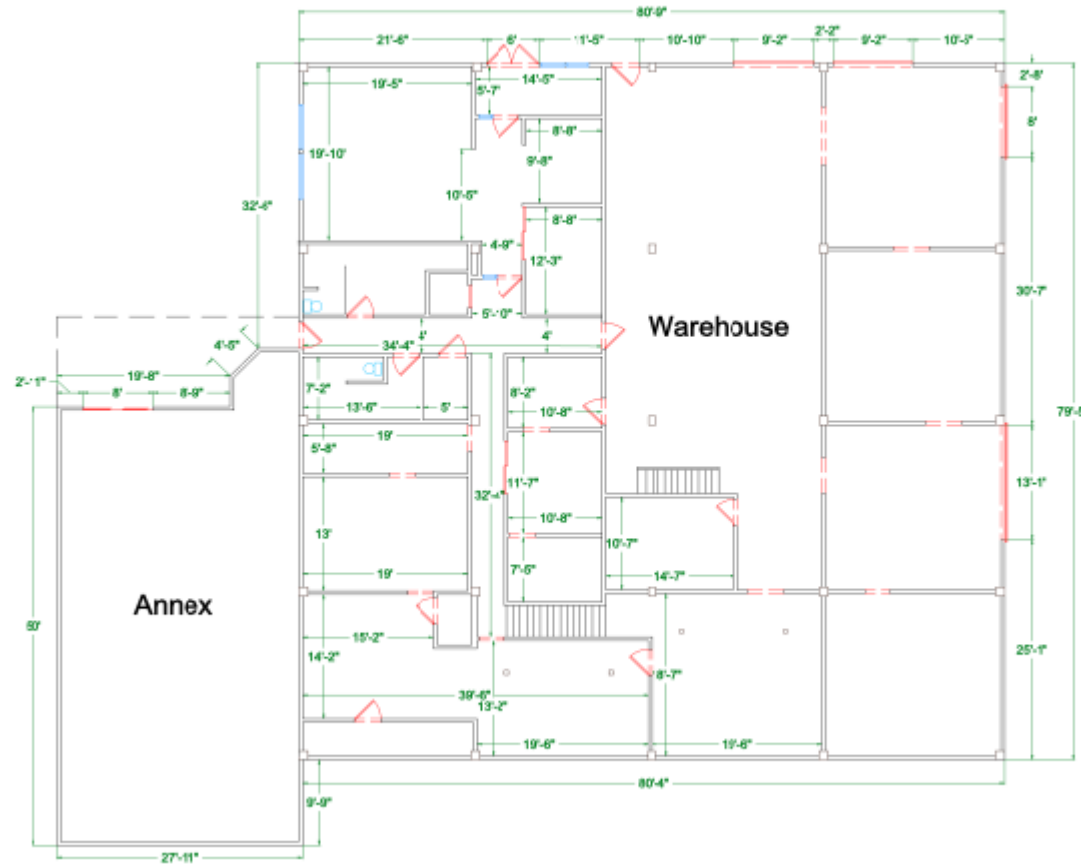
**Rob Gasca**

Cell: 425-766-3054  
robgasca@mapleleafmgt.com

**Alex Ardiente**

Cell: 425 273 3386  
alex@mapleleafmgt.com

# First Floor



# Floorplan



**Rob Gasca Real Estate Group**  
8809 Roosevelt Way NE, Seattle, WA 98115  
(206) 250-7367

[www.robgasca.com](http://www.robgasca.com)



423 S Horton Street, Seattle 98134

**Rob Gasca**

Cell: 425-766-3054  
robgasca@mapleleafmgt.com

**Alex Ardiente**

Cell: 425 273 3386  
alex@mapleleafmgt.com

## Second Floor



## Floorplan

423 S Horton Street, Seattle 98134

**Rob Gasca**

Cell: 425-766-3054  
robgasca@mapleleafmgt.com

**Alex Ardiente**

Cell: 425 273 3386  
alex@mapleleafmgt.com



Suite	SF	\$/PSF	Estimated NNN
B	3,800	\$18	\$5