

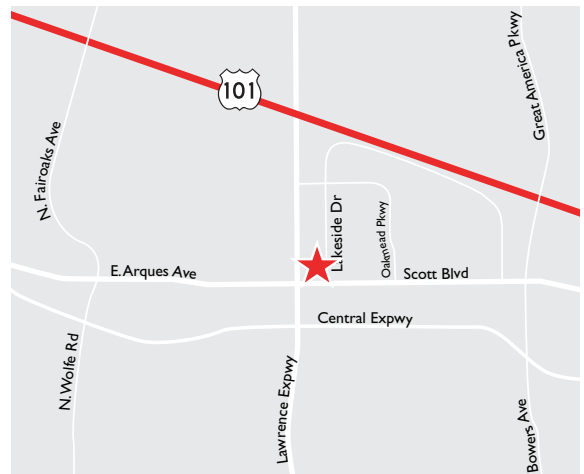


# ±7,469 SF Office / R&D Space Available For Lease

**425 LAKESIDE DRIVE  
SUNNYVALE, CA**

## Project Highlights

- High Identity Building
- Corner Location - Great Glassline
- 100% Drop Ceiling/HVAC
- Skylights
- Excellent Silicon Valley Location
- Sprinklered
- Immediate Access to Highway 101, Central, Lawrence and San Tomas Expressways
- Close to Restaurants and Amenities
- Great Mix of Open Office, Conference Room, and Private Offices
- Call to Tour



*For information, please contact:*

### Frank Cox

Senior Managing Director

t 408-982-8422

frank.cox@nmrk.com

CA RE License #00889881

### Patty McGuigan

Senior Managing Director

t 650-688-8519

patty.mcguigan@nmrk.com

CA RE License #00800652

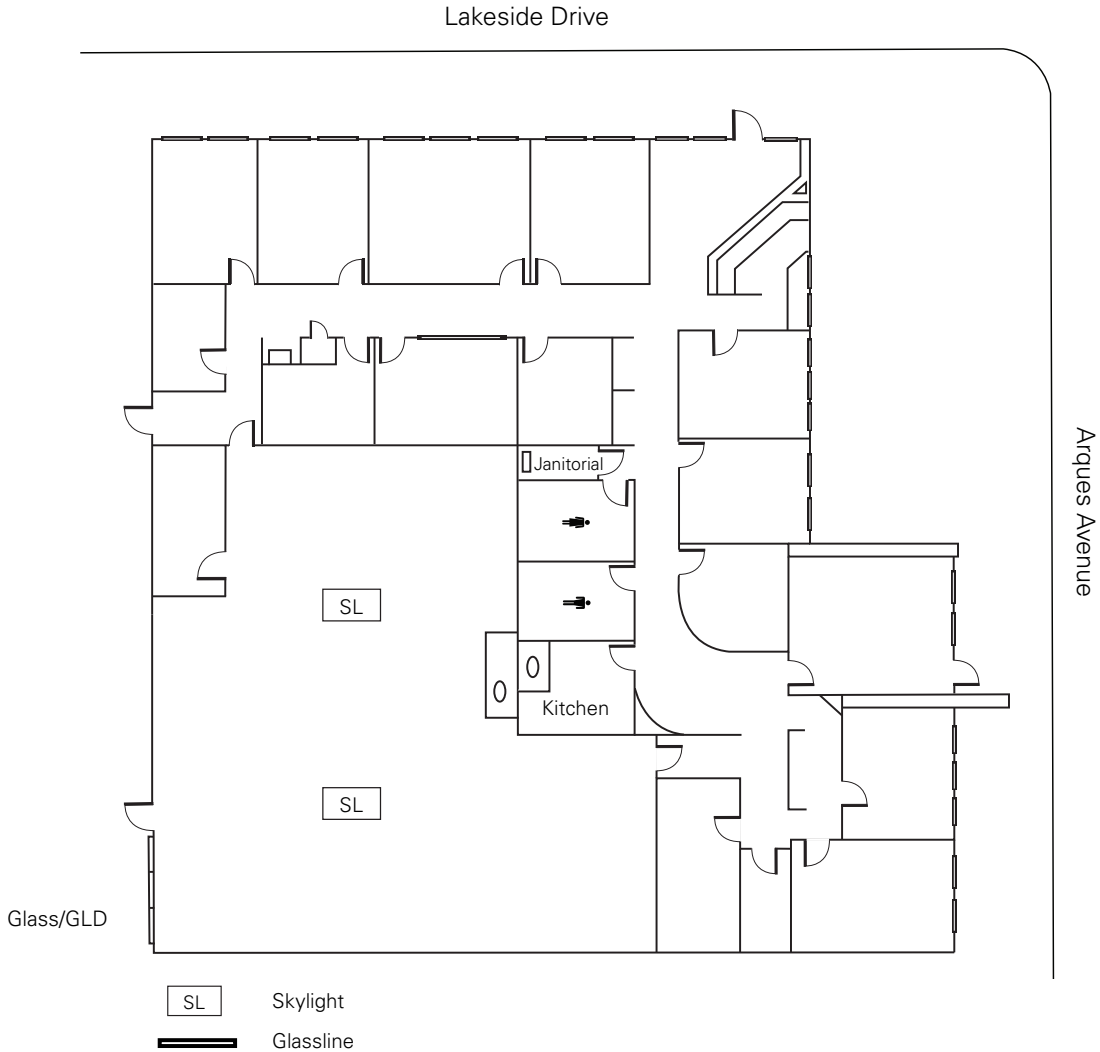
[nmrk.com](http://nmrk.com)

**NEWMARK**

The distributor of this communication is performing acts for which a real estate license is required. The information contained herein has been obtained from sources deemed reliable but has not been verified and no guarantee, warranty or representation, either express or implied, is made with respect to such information. Terms of sale or lease and availability are subject to change or withdrawal without notice. 23-0081 • 03/23

## Floor Plan

425 Lakeside Drive  
±7,469 SF



\*This floor plan is not drawn to scale.

*For information, please contact:*

### Frank Cox

Senior Managing Director

t 408-982-8422

frank.cox@nrmk.com

CA RE License #00889881

### Patty McGuigan

Senior Managing Director

t 650-688-8519

patty.mcguigan@nrmk.com

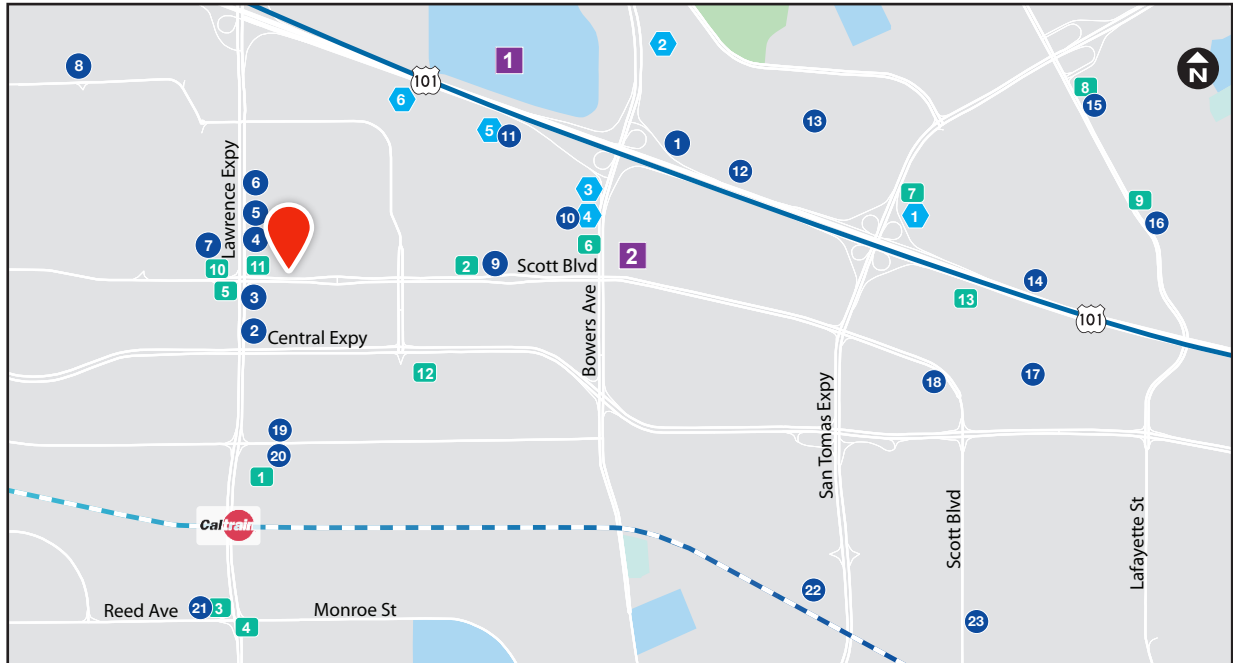
CA RE License #00800652

[nrmk.com](http://nrmk.com)

# NEWMARK

The distributor of this communication is performing acts for which a real estate license is required. The information contained herein has been obtained from sources deemed reliable but has not been verified and no guarantee, warranty or representation, either express or implied, is made with respect to such information. Terms of sale or lease and availability are subject to change or withdrawal without notice. 23-0081 • 03/23

## Amenities Map



### ● RESTAURANTS

1. Birk's
2. Swathi Tiffins
3. Sneha
4. iChaat Cafe
4. Pad Thai Cuisine
5. Falafel Bite
5. Luv Pho
5. St. John's Bar & Grill
6. Myzen
6. Chaats & Currys
6. Tasty Subs & Pizza
7. Celebrations
7. Togo's
7. Merit
7. Una Mas
7. Panera Bread
8. Taj Cafe
8. Sushi Blvd
9. Arcade Cafe
10. Sizzler
11. Prime Restaurant
12. Pedro's
13. Specialty's
14. Pho Van Rest & Deli
15. New Ca Mau
15. Taqueria Cazadores
16. Vespa
17. Athena Grill & Catering
18. Bamboo Leaf
19. Back a Yard
20. Sweet Tomatoes
21. Vito's Famous Pizza
22. Spreadz
23. Taqueria Vallarta

### ◆ HOTELS

1. Biltmore Hotel
2. Santa Clara Marriott
3. Embassy Suites
4. TownePlace Suites
5. The Plaza Suites
6. Residence Inn

### ■ SERVICES

1. Costco
2. Simplicity Bank
3. Bharat Bazar
4. Shell
5. Chevron
6. Shell
7. Valero
8. Shell
9. Rotten Robbie
10. City Sports Club
11. 24 Hour Fitness
12. Bay Club
13. Gold's Gym

### ■ SHOPPING CENTERS

1. **Mercado**  
Walmart Neighborhood Market, HomeGoods, MexiCali Grill, World Wrapps, Jamba Juice, AMC Mercado 20, Starbucks, FedEx Office, Tomatina, In-N-Out Burger, Krispy Kreme, Panda Express, SmokeEaters, Subway, Pho Hoa, Jazen Tea
2. **Santa Clara Square Marketplace**  
Il Fornaio, Chase Bank, Books Inc., Specialty's Cafe & Bakery, Sur La Table, COMEBUY, Whole Foods Market

For information, please contact:

#### Frank Cox

Senior Managing Director

t 408-982-8422

frank.cox@nmrk.com

CA RE License #00889881

#### Patty McGuigan

Senior Managing Director

t 650-688-8519

patty.mcguigan@nmrk.com

CA RE License #00800652

[nmrk.com](http://nmrk.com)

# NEWMARK

The distributor of this communication is performing acts for which a real estate license is required. The information contained herein has been obtained from sources deemed reliable but has not been verified and no guarantee, warranty or representation, either express or implied, is made with respect to such information. Terms of sale or lease and availability are subject to change or withdrawal without notice. 23-0081 • 03/23