

# NEWTON INDUSTRIAL – UNDER CONSTRUCTION

FOR LEASE | 900-930 E. Industrial Rd., Newton, KS 67114



**DEVELOPMENT SITE SIZE**  
7.93± ACRES

**BUILDING SIZE**  
38,400 SF±

**AVAILABLE SPACE**  
38,400 SF±

**YEAR BUILT**  
UNDER CONSTRUCTION

**ZONING**  
I-2 GENERAL INDUSTRIAL

**CONSTRUCTION**  
METAL ON STEEL

**COLUMN SPACING**  
50' X 32'

**DOCK DOORS**  
2

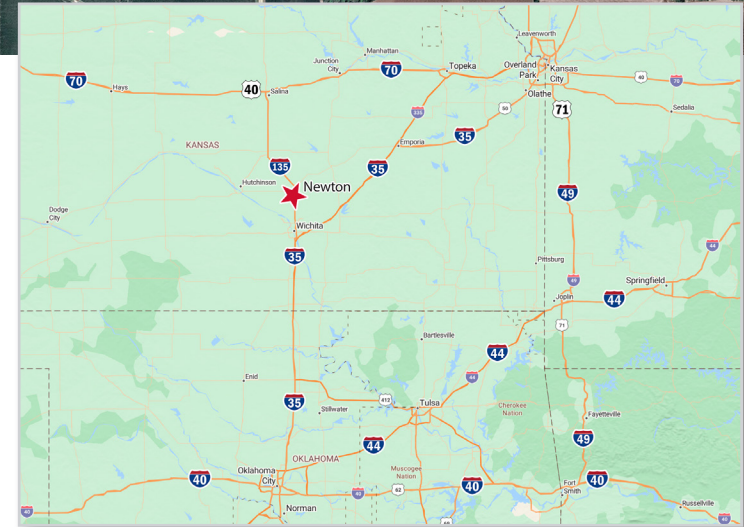
**OVERHEAD DOORS**  
1

**PARKING**  
32 SPACES

**2023 TAXES**  
TBD

## PROPERTY HIGHLIGHTS

- New construction for lease or build to suit.
- Close proximity to I-135 access.
- Build-to-suit opportunity – Contact Broker.

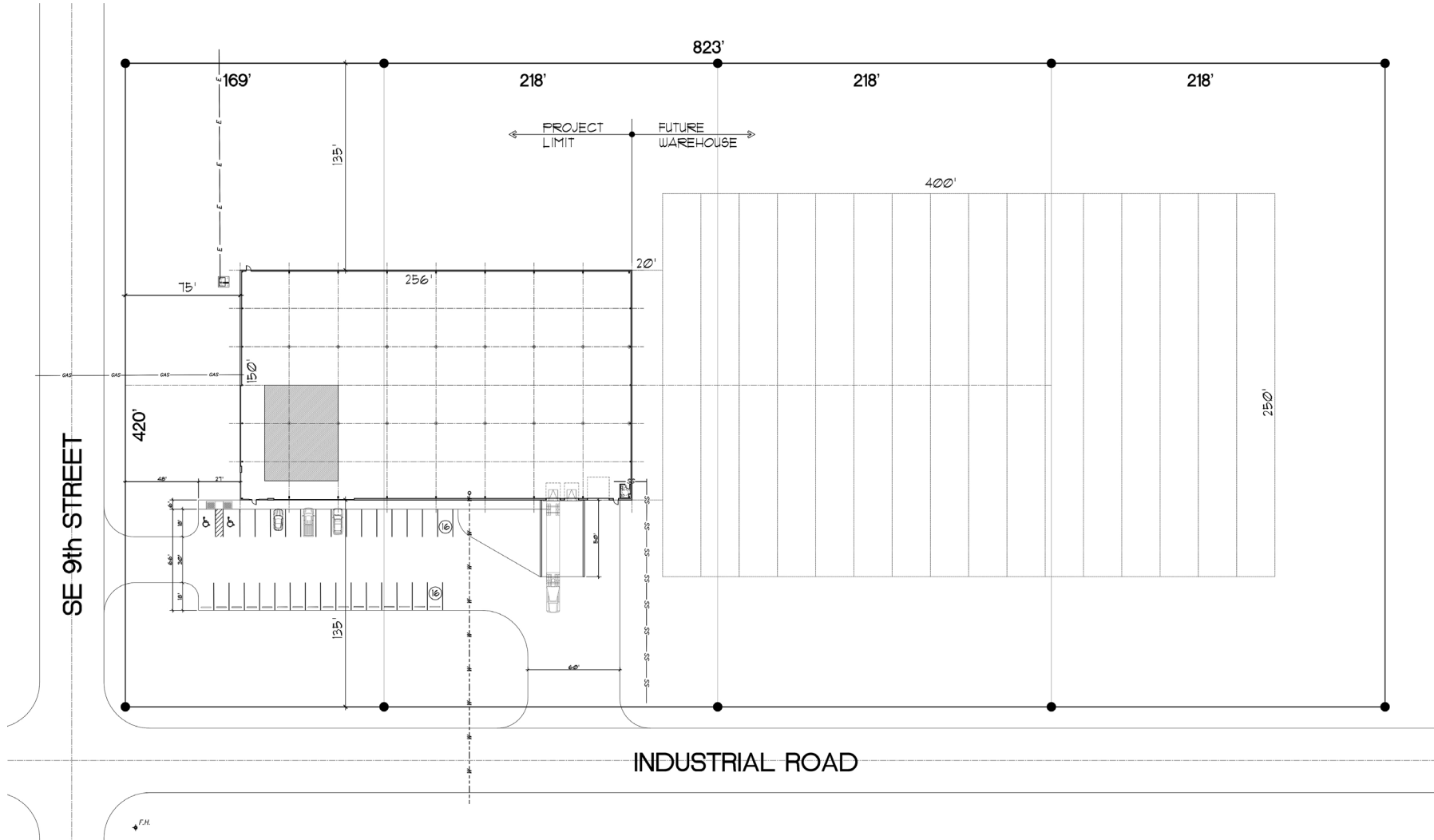


Offered by: **Bradley Tidemann, SIOR** | 316-650-8853 | btidemann@weigand.com

# NEWTON INDUSTRIAL – UNDER CONSTRUCTION

FOR LEASE | 900-930 E. Industrial Rd., Newton, KS 67114

## SITE PLAN

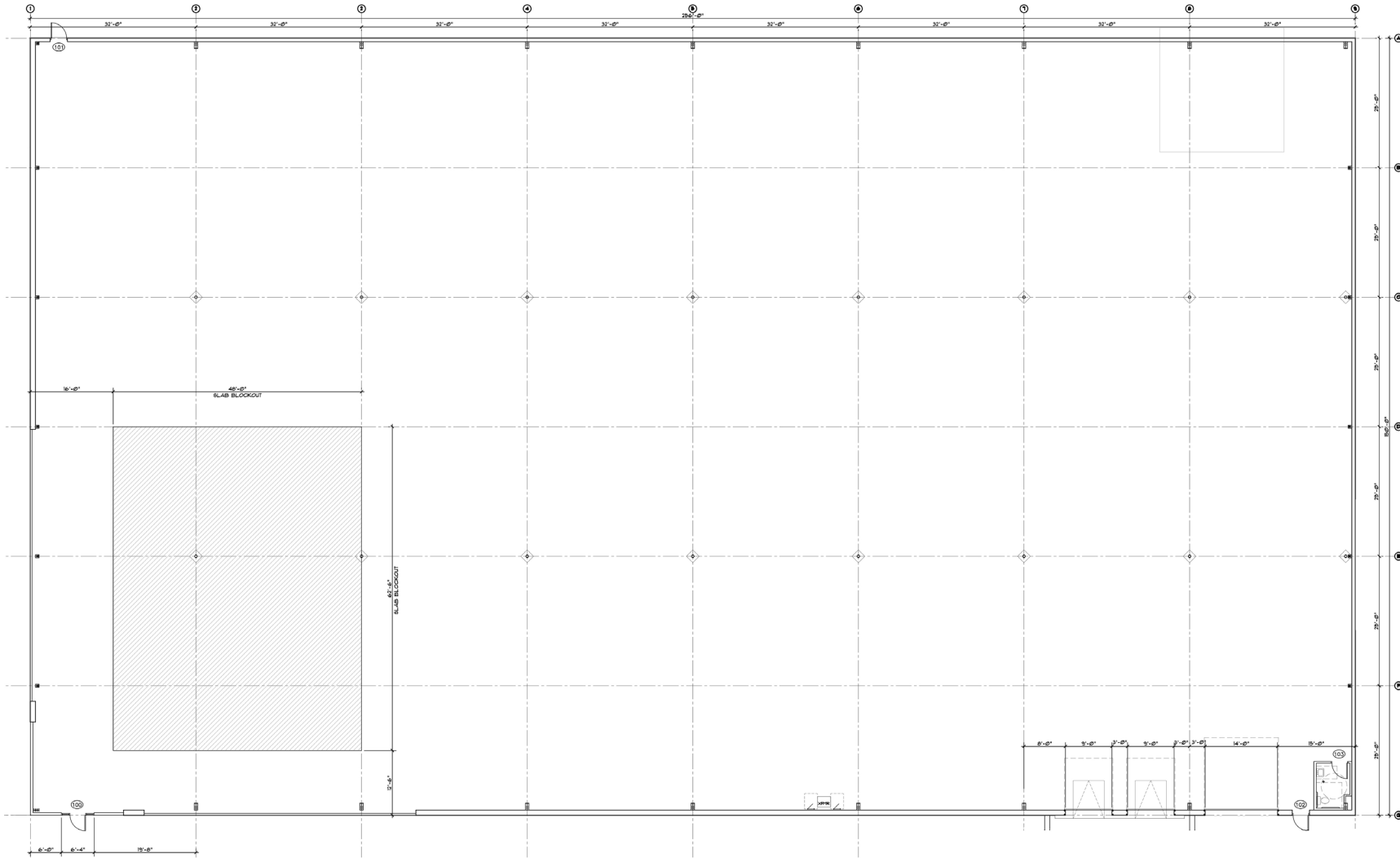


Offered by: **Bradley Tidemann, SIOR** | 316-650-8853 | btidemann@weigand.com

# NEWTON INDUSTRIAL – UNDER CONSTRUCTION

FOR LEASE | 900-930 E. Industrial Rd., Newton, KS 67114

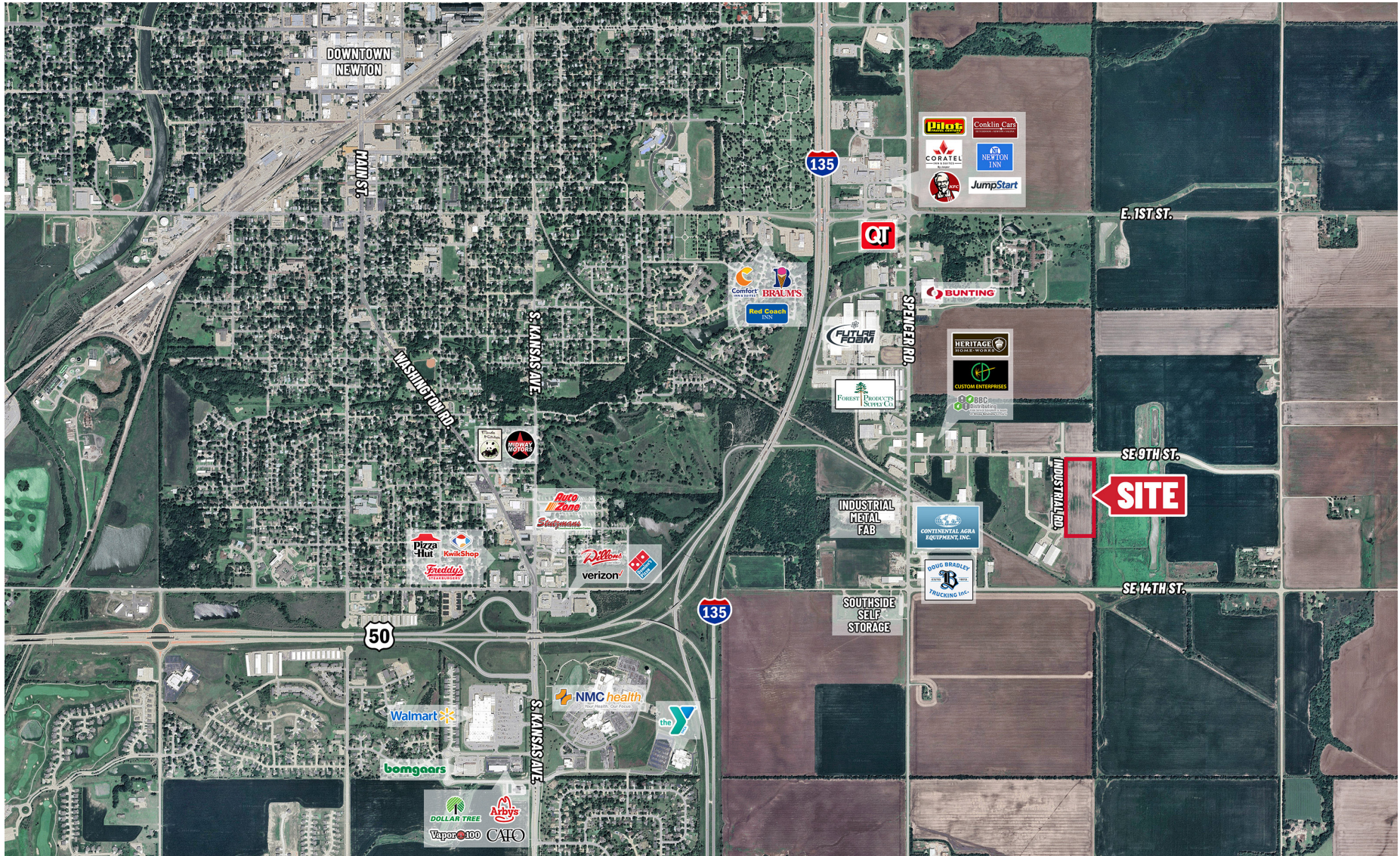
## FLOOR PLAN



Offered by: **Bradley Tidemann, SIOR** | 316-650-8853 | btidemann@weigand.com

# NEWTON INDUSTRIAL - UNDER CONSTRUCTION

FOR LEASE | 900-930 E. Industrial Rd., Newton, KS 67114



All information furnished regarding property for sale, lease, exchange or financing is from sources deemed reliable but no guarantee is made or responsibility assumed as to its accuracy or completeness and you are advised to make your own analysis and verification. Agent hereby notifies prospective buyer/lessee that (a) Agent will be acting as a designated agent of seller/lessor with the duty to represent seller/lessor's interest; and (b) Information given to Agent will be disclosed to seller/lessor.



Offered by: **Bradley Tidemann, SIOR** | 316-650-8853 | btidemann@weigand.com

J.P. Weigand & Sons, Inc. Commercial | 150 N. Market Wichita, KS 67202 | WeigandCommercial.com