



# 7228 N Dreamy Draw

Phoenix, Arizona 85020

## Property Features

- Small single tenant building for lease
- 3,410 RSF
- Full Service lease
- Located on the grounds of Pointe Business Plaza
- Easy direct access
- Significant amount of covered/uncovered parking
- Monument signage available
- Walking distance to park/restaurant
- Centrally located



Demographics	1 Mile	3 Miles	5 Miles
Average Age:	43.0	41.5	38.2
Population:	16,546	111,484	372,413
Average HH Income	\$98,748	\$98,205	\$81,302
Daytime Emp. Pop.	9,893	70,575	195,650

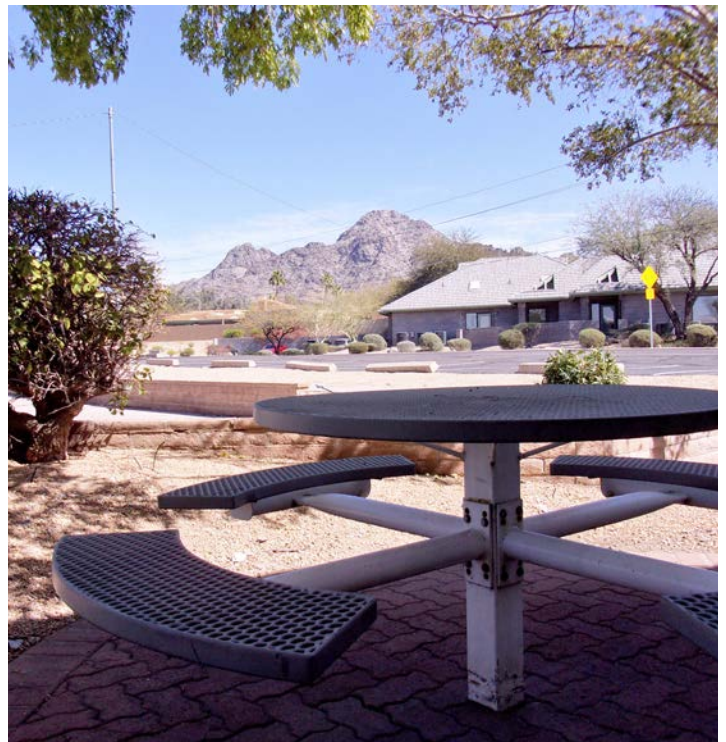
**For Lease: \$22.00/SF  
(Full Service)**

**Kevin Higgins**  
602 393 6605  
kevin.higgins@naihorizon.com

For Lease

# Property Photos

## Pointe Business Plaza Annex

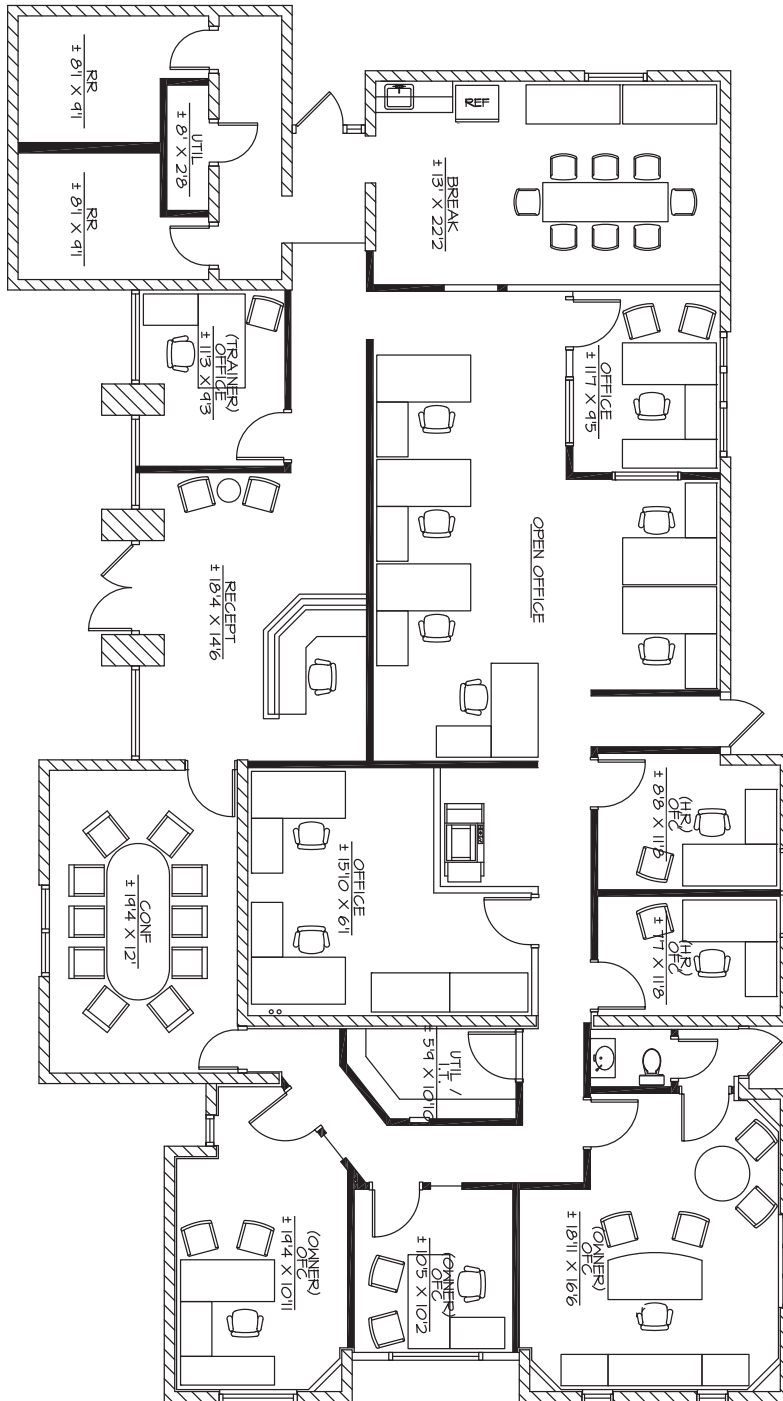


Kevin Higgins  
602 393 6605  
kevin.higgins@naihonorizon.com

**NAI**Horizon

# Floor Plan

## Pointe Business Plaza Annex



7228 N Dreamy Draw | ±3,410 RSF

# Site Plan

## Pointe Business Plaza Annex

