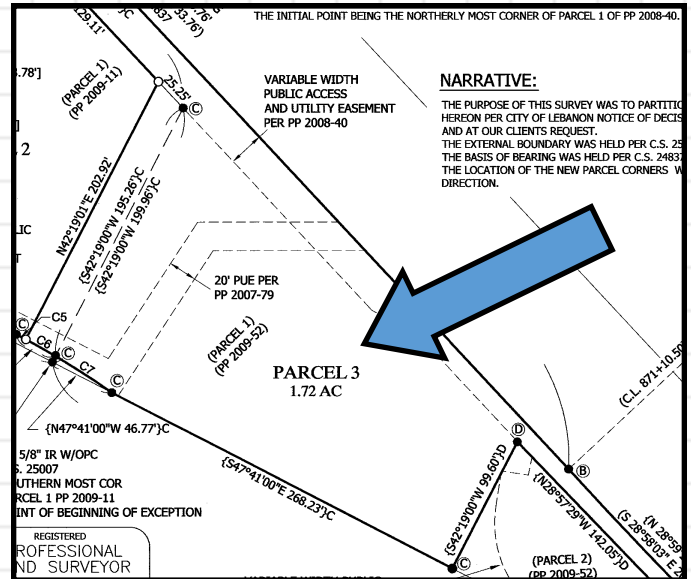
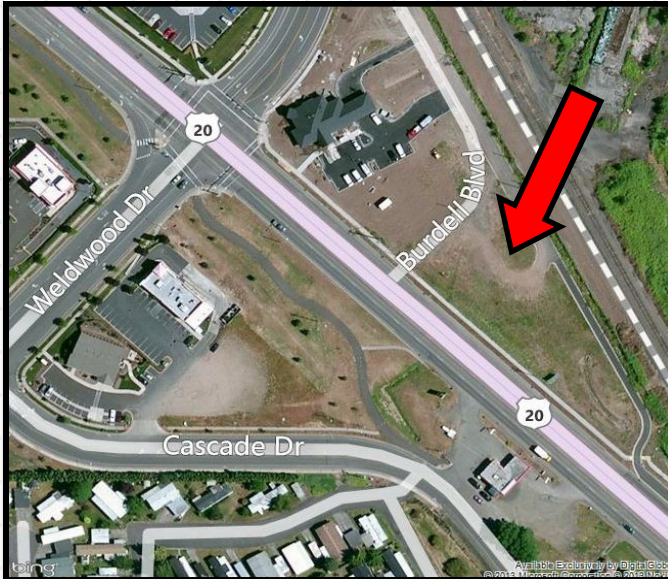




# For Sale

## Commercial Land

### Hwy 20 in Lebanon, OR



Commercial development parcel adjacent to Oregon State Credit Union. Very near to Walgreens and across the highway from Super Walmart and various retail users.

Marketed by:

**Matthew Conser, CCIM, Broker**

Cell: 541.619.8004

[matthew@consercommercial.com](mailto:matthew@consercommercial.com)

**Stuart Conser, Principal Broker**

Licensed in the State of OR

**Conser Realty & Associates**

Office: 541.791.9310

**Location:**

Lebanon, OR

**Price:**

**\$561,923**

**Acres:**

~1.72 acres

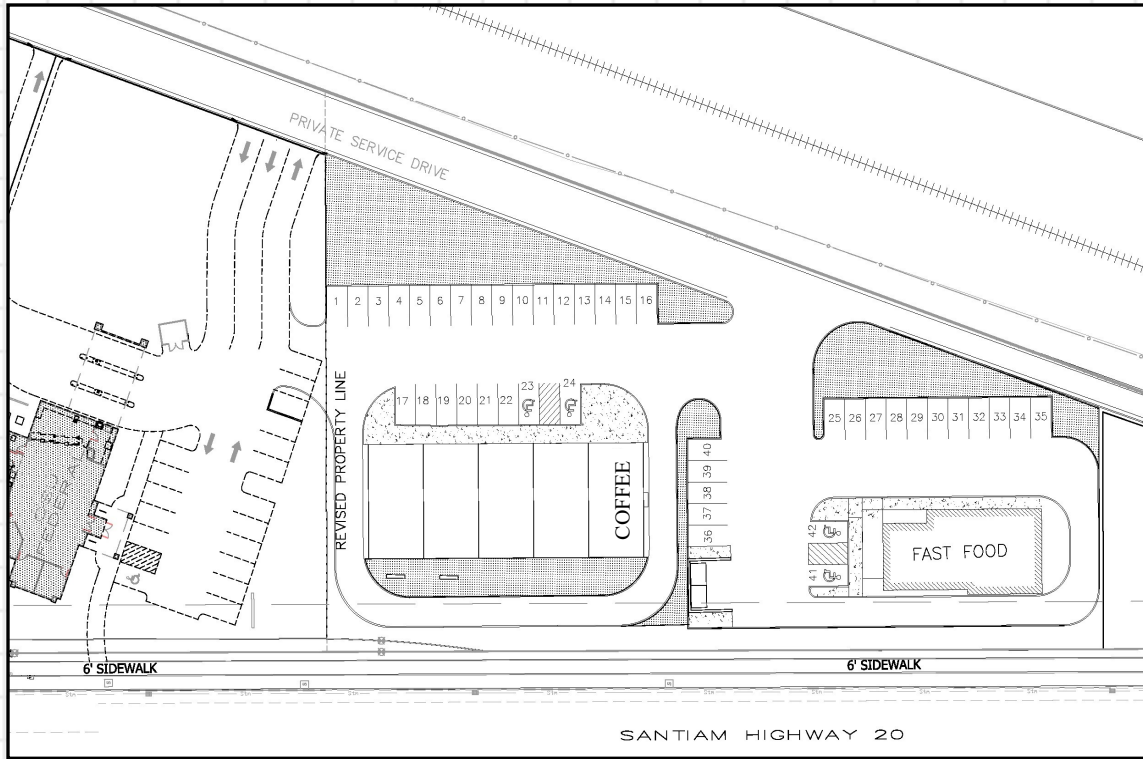
**Zoning:**

Mixed Use

*The information in this package was gathered from sources deemed reliable, however Conser Realty & Assoc. makes no representation or warranty of the accuracy of the information. Any buyer or tenant considering a purchase or lease of this property should confirm any and all information relied upon in making the decision to purchase or lease prior to finalizing the transaction and bears the risk of all inaccuracies.*



# Commercial Land for Sale Lebanon, OR



Proposed Flash Plan

## Mixed Use Zoning Allows a Variety of Uses:

- Office
- Medical Lab
- Brewery, Winery, Distillery
- Hair Salon
- Restaurant
- Etc., Etc.



*The information in this package was gathered from sources deemed reliable, however Conser Realty & Assoc. makes no representation or warranty of the accuracy of the information. Any buyer or tenant considering a purchase or lease of this property should confirm any and all information relied upon in making the decision to purchase or lease prior to finalizing the transaction and bears the risk of all inaccuracies.*