



Retail | For Sale | 1,824 SF

Commercial Building Near I-94
Quality Flexible Commercial Space

270 Crandall Parkway
Lawrence, MI 49064

Overview

Immaculate 1,824 SF Morton pole building built in 2020 in the Lawrence-Crandall Business Park, currently a dispensary; delivered vacant at closing, ready for a wide range of commercial uses. This high-quality facility sits on 1.5 acres with excellent parking, superior craftsmanship, and attention to detail rarely found in the market. Prime visibility and access just off I-94 position the property for local, regional, or national users seeking flexibility, efficiency, and a polished, move-in-ready asset. Call today to schedule a showing.

Sale Price

\$299,000

Stephanie Wiltgen
269.373.8106 [direct]
269.208.9700 [mobile]
swiltgen@ccmichigan.com

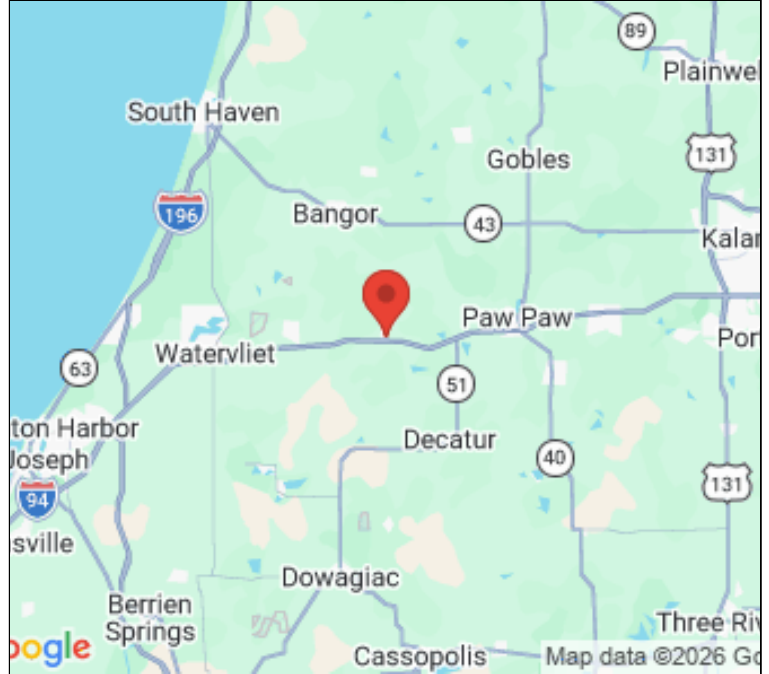




PROPERTY FEATURES



County:	Van Buren
Municipality:	Lawrence Twp / Village of Lawrence
Gross Size:	1,824 SF
Total Acres:	1.50 Acres
Recommended Use:	Retail / Multi-Use
Year Built:	2020
Zoning Code / Description:	Commercial / Lawrence-Crandall Business Park
Between Streets:	I-94 Exit 52
Construction:	Metal / Pole / Wood
Sewer / Water:	Public / Public
Heat Type / Source:	Forced Air / Gas
Air Conditioning:	Gas Forced
Utilities Attached:	Gas and Electric
Utilities Available:	All Public Utilities



270 Crandall Parkway | Lawrence, MI 49064

Stephanie Wiltgen
269.373.8106 [direct]
269.208.9700 [mobile]
swiltgen@ccmichigan.com





INTERIOR PHOTOS



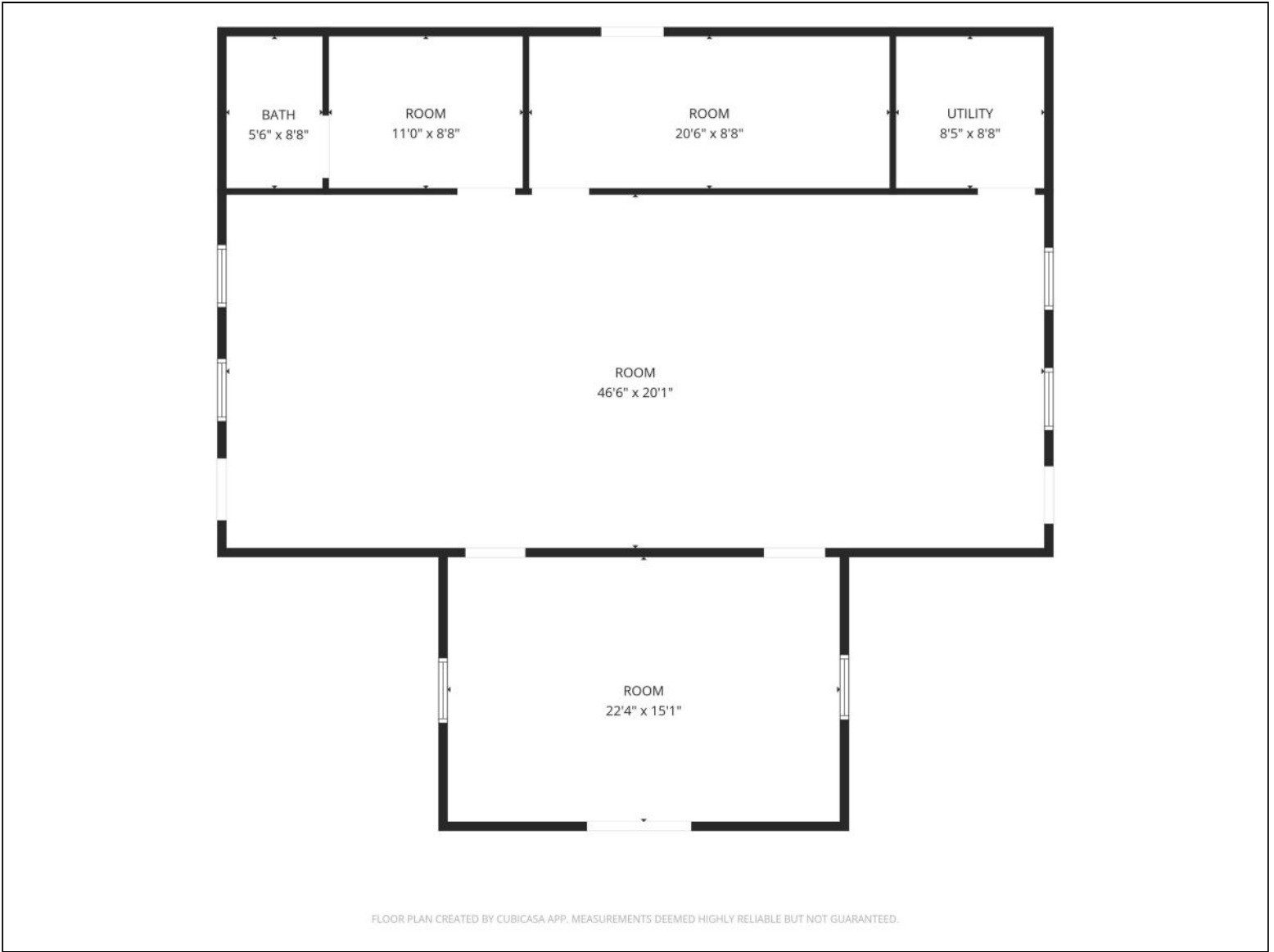
270 Crandall Parkway | Lawrence, MI 49064

Stephanie Wiltgen
269.373.8106 [direct]
269.208.9700 [mobile]
swiltgen@ccmichigan.com





FLOOR PLAN



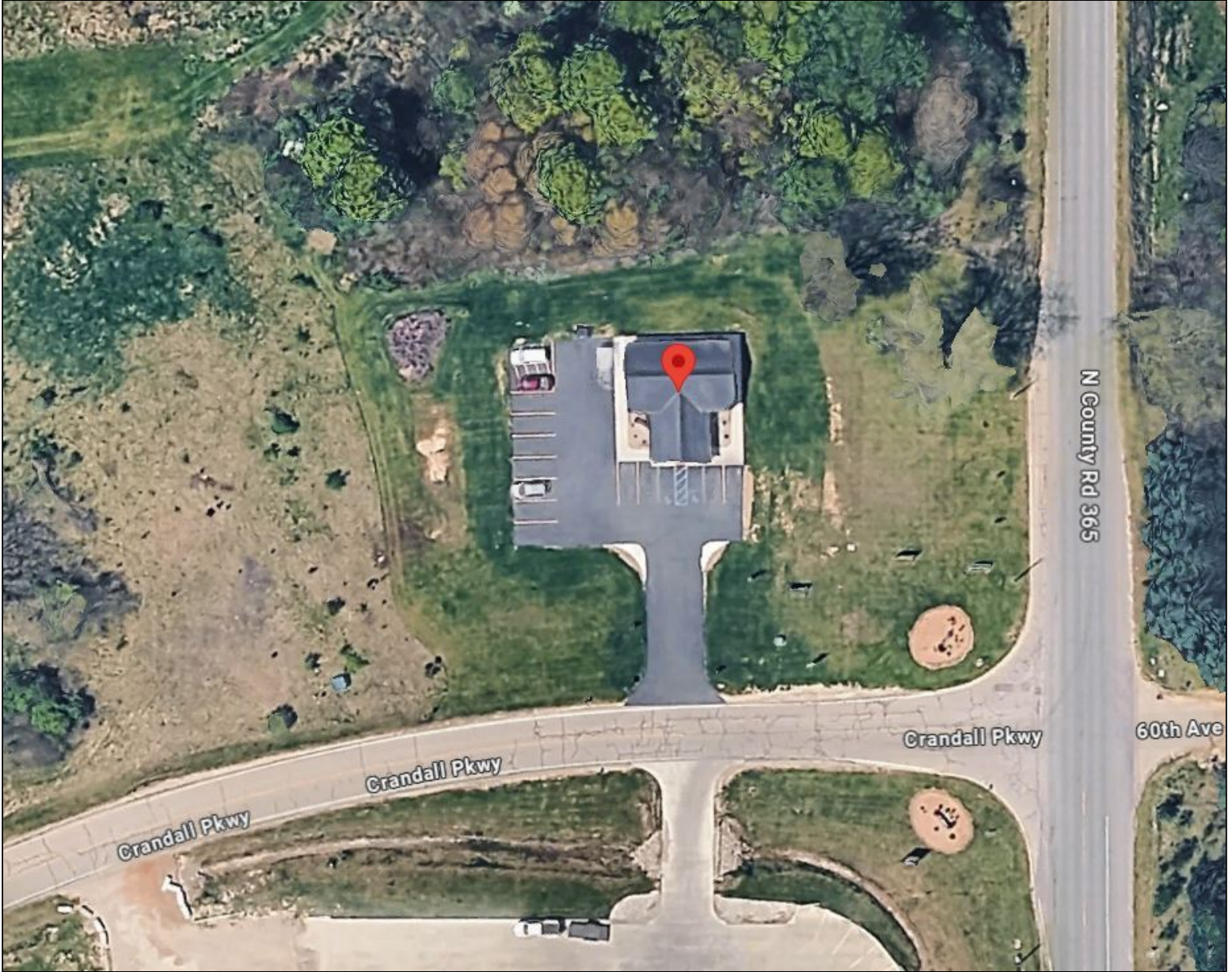
270 Crandall Parkway | Lawrence, MI 49064

Stephanie Wiltgen
269.373.8106 [direct]
269.208.9700 [mobile]
swiltgen@ccmichigan.com





AERIAL PHOTO



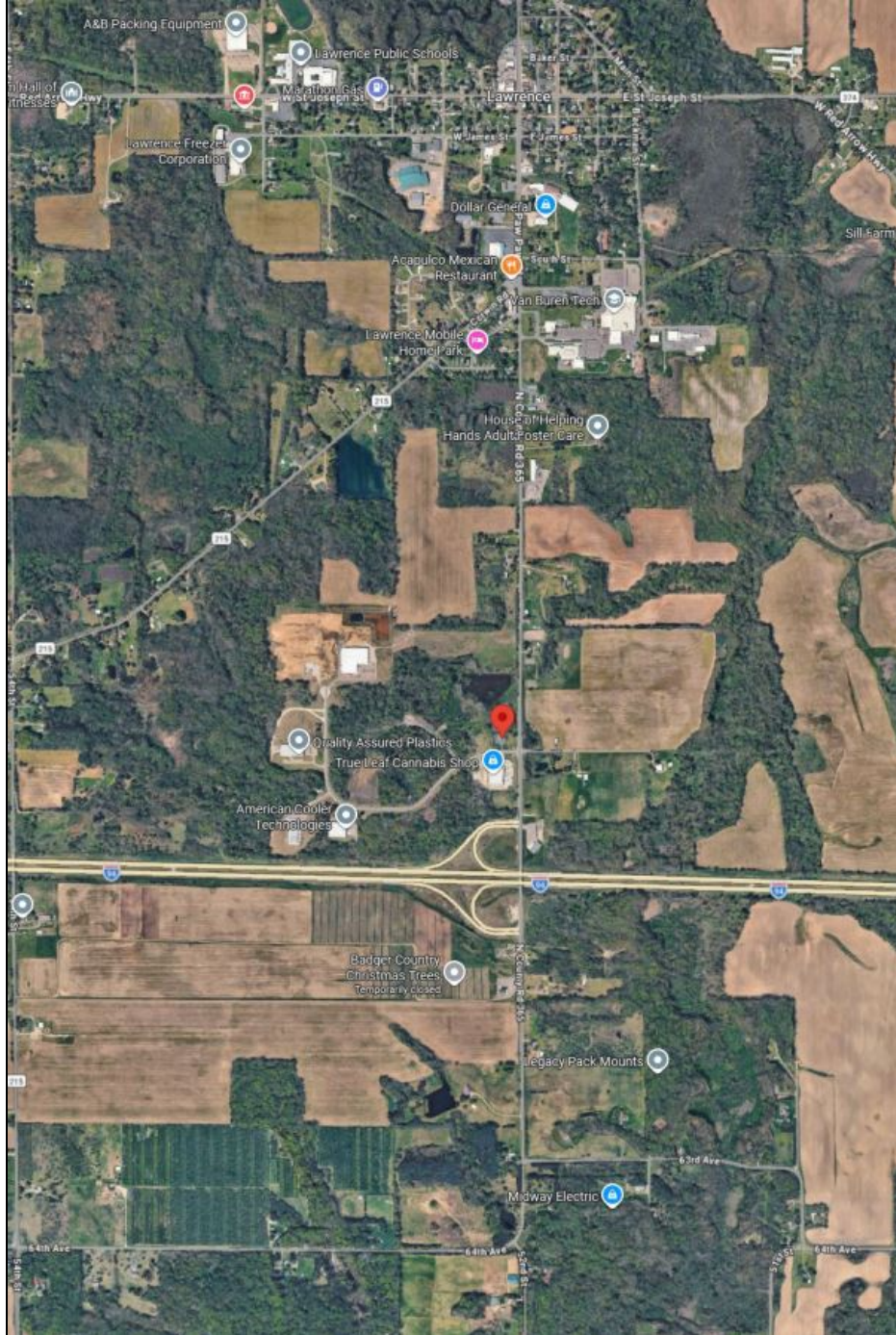
270 Crandall Parkway | Lawrence, MI 49064

Stephanie Wiltgen
269.373.8106 [direct]
269.208.9700 [mobile]
swiltgen@ccmichigan.com





DISTANCE AERIAL PHOTO



270 Crandall Parkway | Lawrence, MI 49064

Stephanie Wiltgen
269.373.8106 [direct]
269.208.9700 [mobile]
swiltgen@ccmichigan.com

