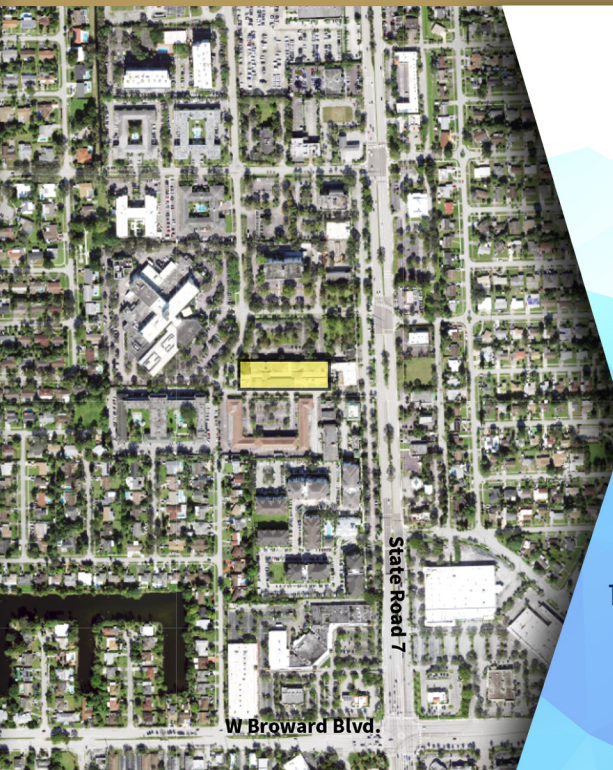


# MEDICAL SPACE FOR LEASE

4101 NW 3rd Court, Plantation, FL 33317



## Property Details

Well maintained medical office building with a grand lobby, perfect for any medical professional practice looking to be in the Plantation or Fort Lauderdale Area.

Located near the highly trafficked Broward Boulevard and State Road 7 intersection and within minutes of the Florida Turnpike.

Conveniently located within walking distance to a multitude of restaurants, banks, and other support services.

Multiple elevators and access to all suites on the same level helps provide easy of access for clients.

There is no charge for parking and the majority of spaces are covered parking, protecting yourself and your vehicle from the elements.

## Property Specifications

Base Rate:  
**\$16.50/PSF**

CAM:  
**\$14.29/PSF**

Property Size:  
**46,000 SF**

Highlights:  
**Medical Build-Out  
Covered Parking  
New Roof**

For more Information:

JC Halliday IV

954 - 214 - 3881 | [jchalliday@hallidaygroup.com](mailto:jchalliday@hallidaygroup.com)

[WWW.HALLIDAYGROUP.COM](http://WWW.HALLIDAYGROUP.COM)

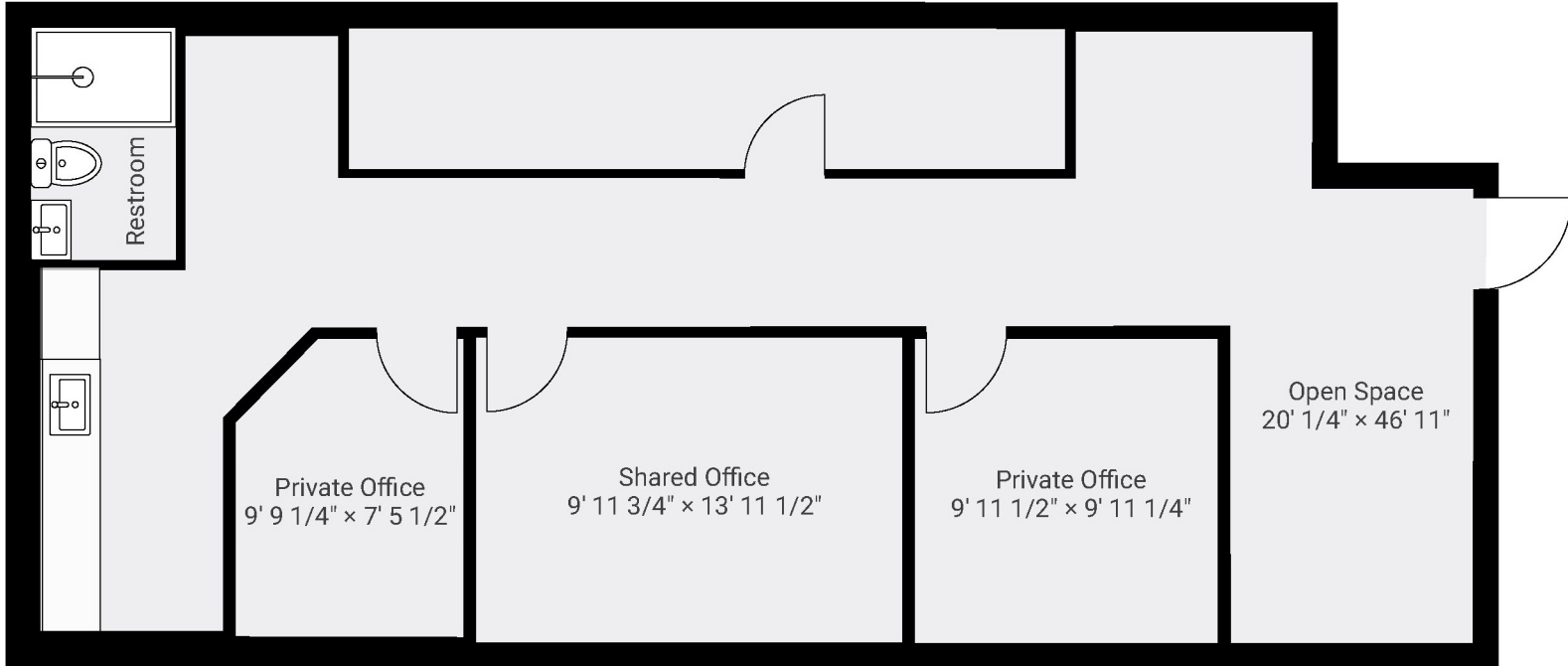
**HALLIDAY GROUP**



# MEDICAL SPACE FOR LEASE

4101 NW 3rd Court, Plantation, FL 33317

## Suite 14 - Floor Plan 1,586 RSF



For more Information:

JC Halliday IV

954 - 214 - 3881 | [jchalliday@hallidaygroup.com](mailto:jchalliday@hallidaygroup.com)

[WWW.HALLIDAYGROUP.COM](http://WWW.HALLIDAYGROUP.COM)

HALLIDAY GROUP