

NAIDESCO



For Lease  
10425 Old Olive Street Rd.  
Creve Coeur, MO 63141

# 10425 Old Olive Street Rd For Lease

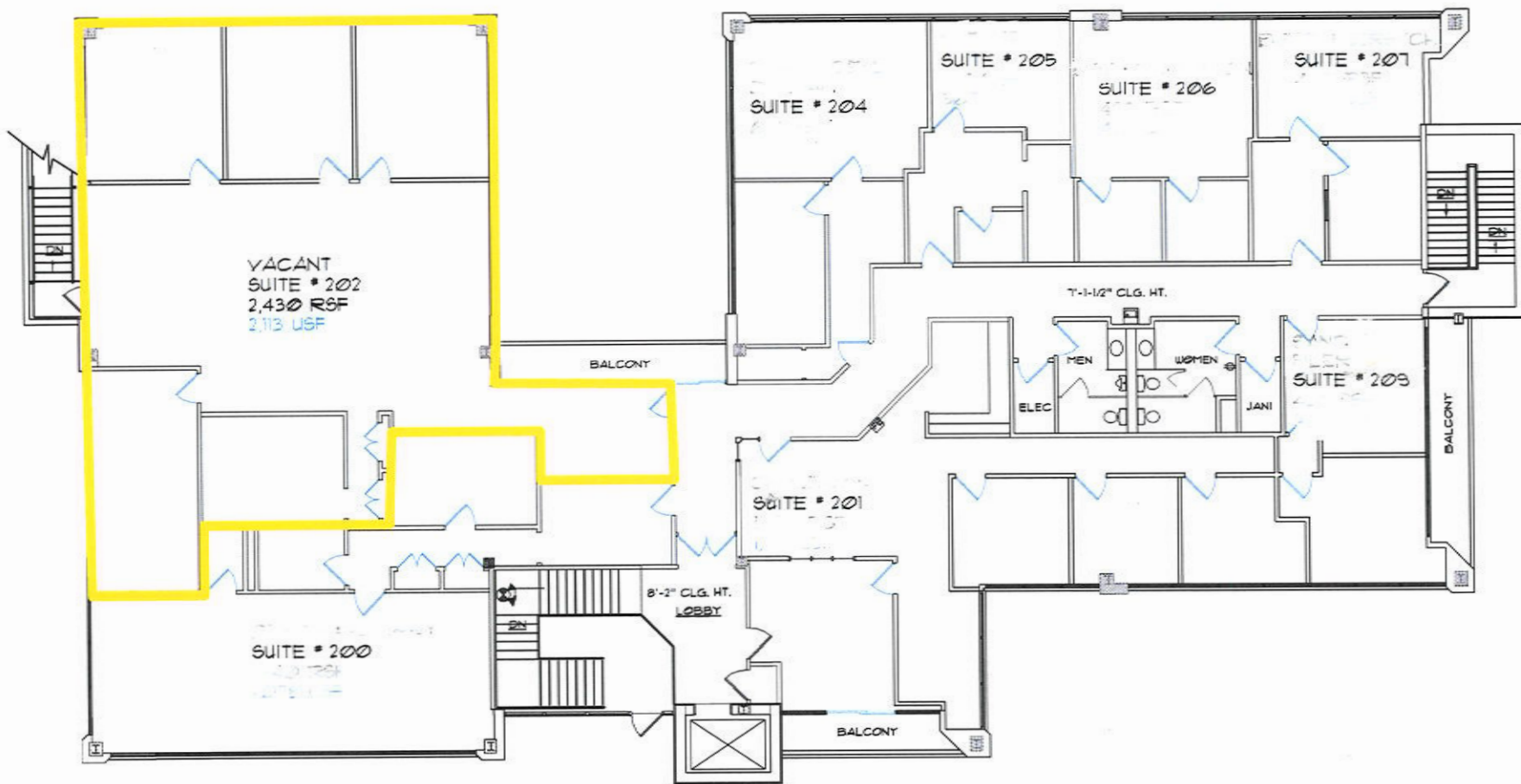
- Professional office space for lease:
  - Suite 202: 2,430 SF
    - Private direct entrance from parking lot via exterior stairwell
- Recent renovations to all building common areas, including new restrooms, flooring and paint throughout
- Outdoor courtyard for tenant use
- Elevator served
- Abundant free surface parking
- Easy access from Olive & Lindbergh Blvd.
- Located within the 39 North Agtech Innovation District



Lease Rate:  
**\$19.50, Full Service**

## Additional Pictures





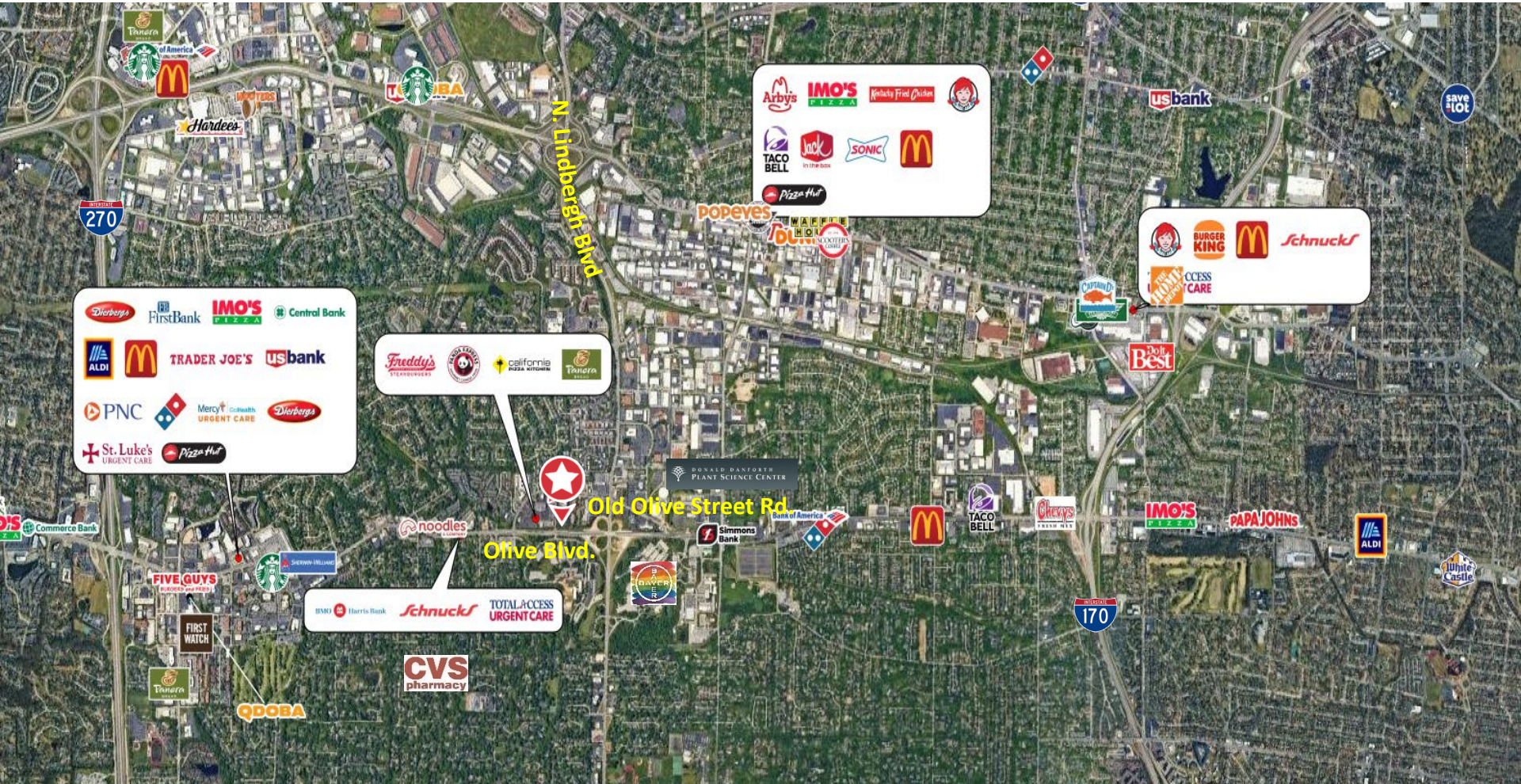
**SECOND FLOOR PLAN**

SCALE NTS

**SECOND FLOOR**

10425 OLD OLIVE STREET  
ST. LOUIS, MISSOURI 63141

# Aerial



Exclusively Represented by:

Exclusively Represented by:  
Matt Ruck, CCIM  
Vice President, NAI DESCO  
314-994-4445 Direct  
314-409-8676 Mobile  
[mruck@naidesco.com](mailto:mruck@naidesco.com)

Tim Cribbin  
Associate, NAI DESCO  
314-994-4448 Direct  
314-971-6622 Mobile  
[tcribbin@naidesco.com](mailto:tcribbin@naidesco.com)

**NAIDESCO**

8112 Maryland Ave, Suite 300  
St. Louis, MO 63105  
314 994 4800  
[www.naidesco.com](http://www.naidesco.com)