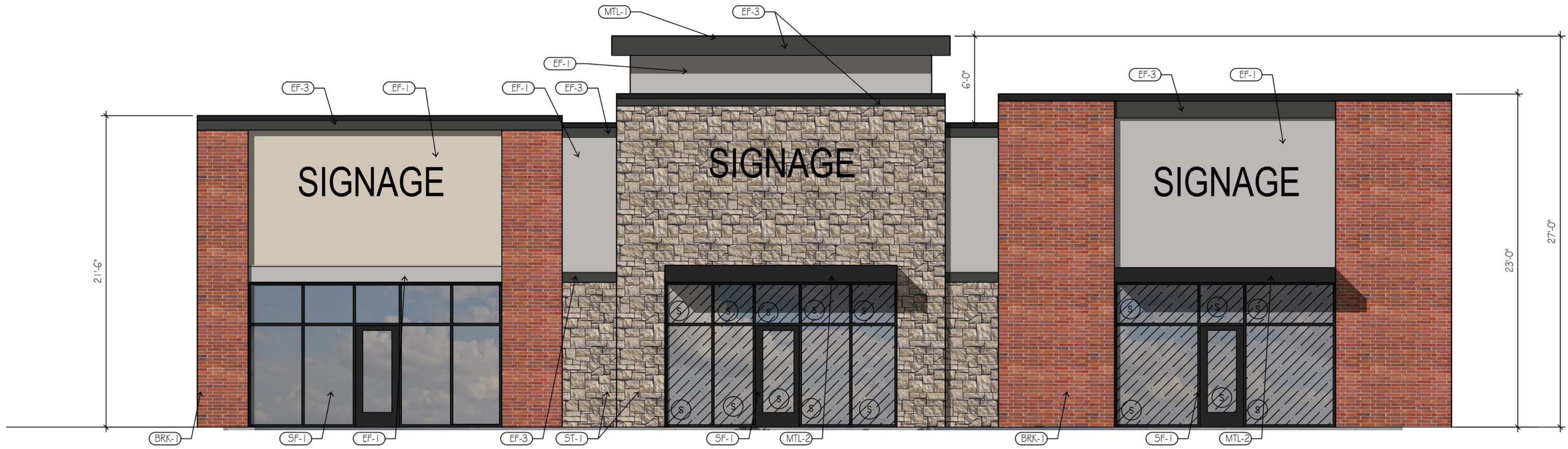


EXTERIOR FINISH LEGEND			
MARK	MATERIAL	MANUFACTURER	COLOR
SF-1	STOREFRONT	KAWNEER	BLACK
BRK-1	MODULAR FACE BRICK	SIOUX CITY BRICK	AUTUMN HAZE
ST-1	MANUFACTURED STONE	CORONADO STONE	CAROLINA RUBBLE-SANDSTONE
EF-1	EIFS	-	SWG275 FASHIONABLE GRAY
EF-2	EIFS	-	SW7036 ACCESSIBLE BEIGE
EF-3	EIFS	-	SW7069 IRON ORE
MTL-1	METAL COPING	-	BLACK
MTL-2	METAL CANOPY	-	BLACK
PT-1	PAINT	SHERWIN WILLIAMS	TBD

(S) = GRAY SPANDREL GLASS



NORTH ELEVATION ④
SCALE: 3/16" = 1'-0"

PEDESTRIAN VIEW PLAN AREA = 692 SF
PEDESTRIAN VIEW PLAN GLASS AREA = 390 SF
PERCENTAGE OF GLASS = 56.3%

STOREFRONT AREA = 488 SF
MASONRY AREA = 890 SF (60.3%)
EIFS AREA = 549 SF (37.1%)
MTL CANOPY AREA = 38 SF (2.6%)

CLEAR GLASS PERCENTAGE = 35.9%
SPANDREL GLASS PERCENTAGE = 64.1%

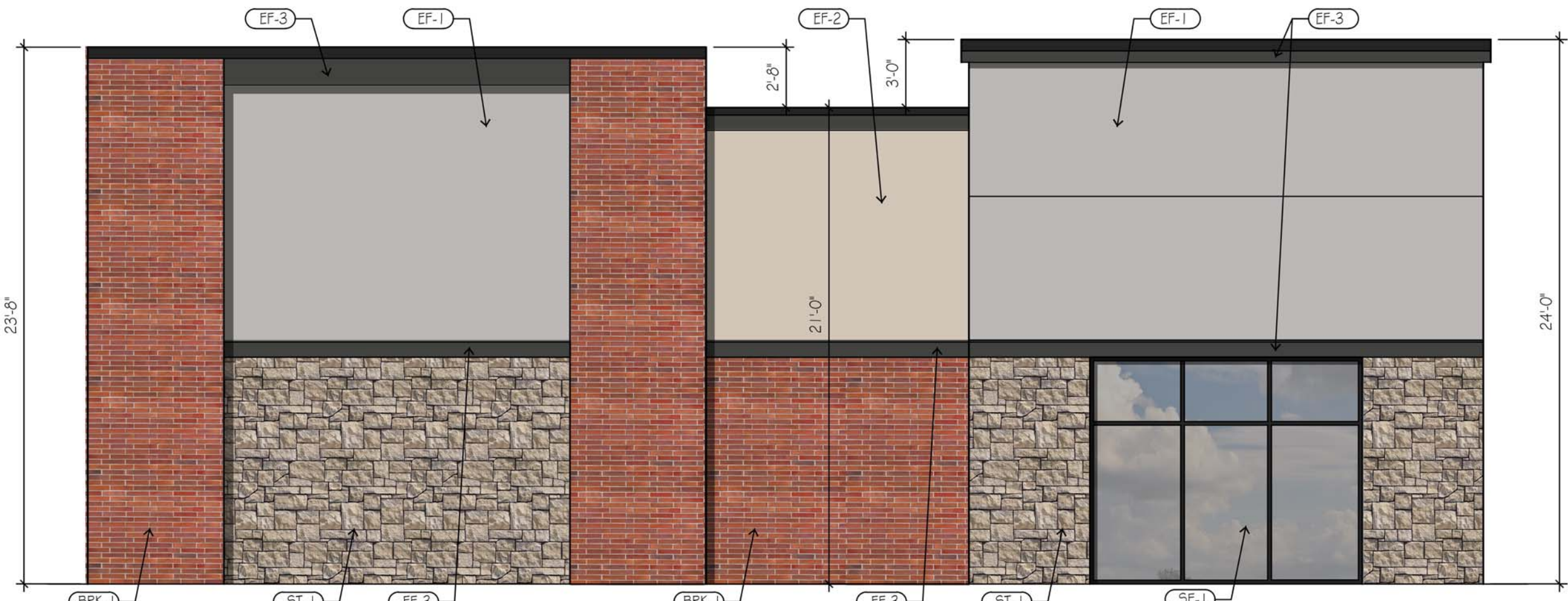
TOTAL FACADE AREA = 1,965 SF
TOTAL FACADE W/O STOREFRONT = 1,477 SF

STOREFRONT AREA = 120 SF
MASONRY AREA = 655 SF (56.9%)
EIFS AREA = 497 SF (43.1%)

TOTAL FACADE AREA = 1,272 SF
TOTAL FACADE W/O STOREFRONT = 1,152 SF

PEDESTRIAN VIEW PLAN AREA = 492 SF
PEDESTRIAN VIEW PLAN GLASS AREA = 92 SF
PERCENTAGE OF GLASS = 18.7%

CLEAR GLASS PERCENTAGE = 100.0%



WEST ELEVATION ③
SCALE: 1/4" = 1'-0"

STOREFRONT AREA = 265 SF
MASONRY AREA = 714 SF (73.6%)
EIFS AREA = 241 SF (24.8%)
MTL CANOPY AREA = 16 SF (1.6%)

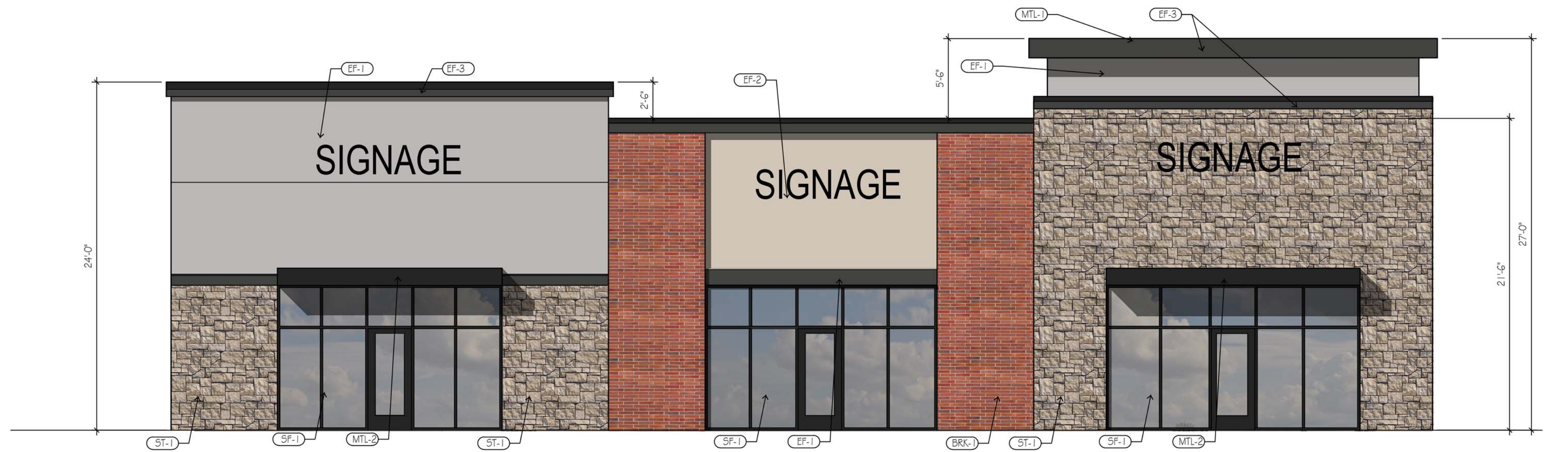
TOTAL FACADE AREA = 1,236 SF
TOTAL FACADE W/O STOREFRONT = 971 SF

PEDESTRIAN VIEW PLAN AREA = 424 SF
PEDESTRIAN VIEW PLAN GLASS AREA = 212 SF
PERCENTAGE OF GLASS = 50.0%

CLEAR GLASS PERCENTAGE = 100.0%



EAST ELEVATION ②
SCALE: 1/4" = 1'-0"



PEDESTRIAN VIEW PLAN AREA = 696 SF
PEDESTRIAN VIEW PLAN GLASS AREA = 392 SF
PERCENTAGE OF GLASS = 56.3%

STOREFRONT AREA = 490 SF
MASONRY AREA = 822 SF (79.4%)
EIFS AREA = 175 SF (16.9%)
MTL CANOPY AREA = 38 SF (3.7%)

TOTAL FACADE AREA = 1,525 SF
TOTAL FACADE W/O STOREFRONT = 1,035 SF

SOUTH ELEVATION ①
SCALE: 1/4" = 1'-0"

David Eskov
Architect
21466 W 120th St
Olathe, KS 66061
eskovarch@outlook.com
913-284-3660

Drawings and/or Specifications are original proprietary work and property of the Architect intended for the specifically titled project. Use of items contained herein without consent of Architect for titled or other projects is prohibited. Drawings illustrate best information available to Architect. Field verification of actual elements, conditions, and dimensions is required.

ADA Compliance
Certification
To best of my professional knowledge, the facility as indicated is in compliance with the Americans with Disabilities Act, including the current ADA Title III Design Guidelines.

David Eskov

PRELIM

JULY 12, 2023

Revisions

2 STORY SHELL
MULTI TENANT
8585 W 135TH ST
OVERLAND PARK, KS

sheet
A2.1
EXTERIOR ELEVATIONS