




For lease

15350 East West Road, Midlothian, VA 23114

Brand New "Class A" Medical Office Space
4,919 – 10,036 SF Available

 **JLL** SEE A BRIGHTER WAY

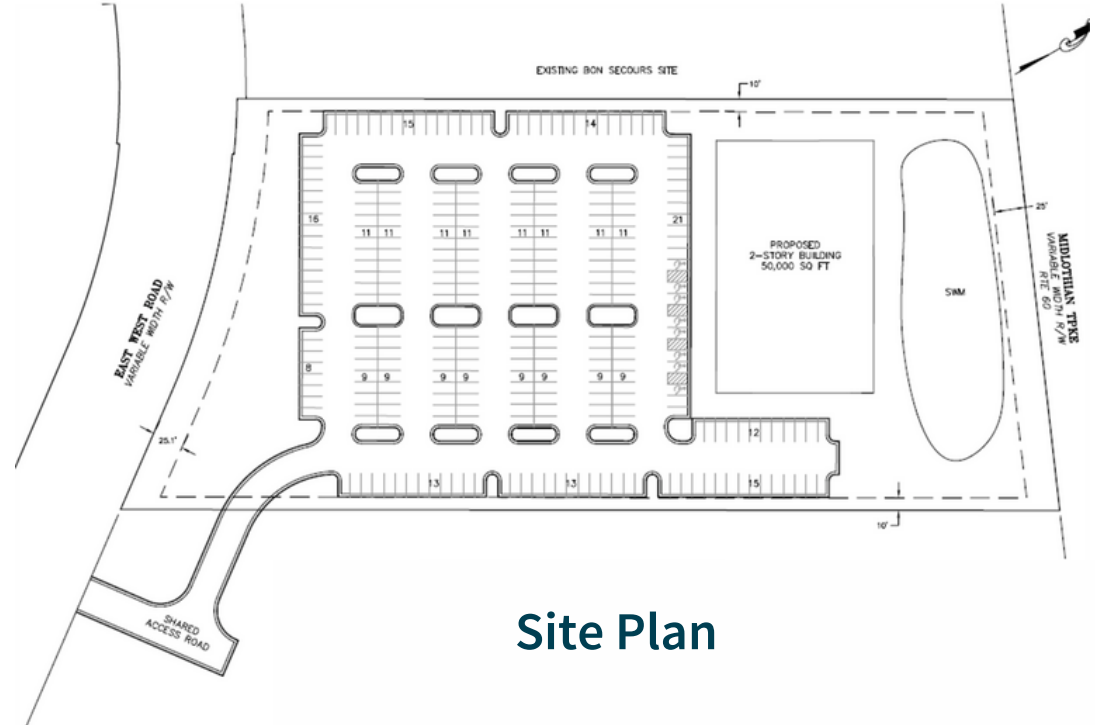
Property Highlights

The Premier Medical Office Destination in the Midlothian Area

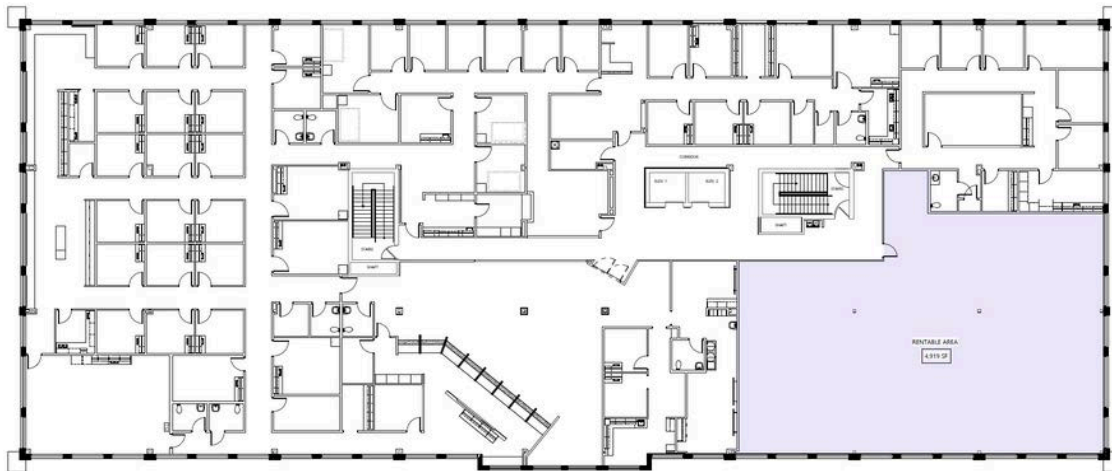
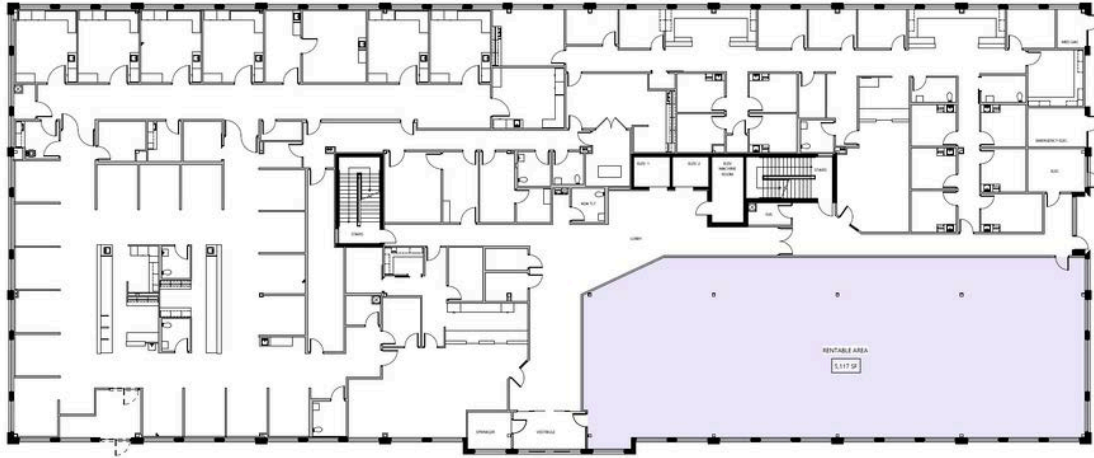
Watkins Center is a premier location for medical office space. Immediate access to Route 60 and Route 288 offers convenience to residents all over the region. The nearby retail and restaurant amenities offer unparalleled convenience to both patients and staff.

Building Features

- 4,919 SF and 5,117 SF available
- Brand new Class A medical office space
- Asking rate \$33.00/NNN with a generous tenant improvement allowance.
- Tremendous accessibility to service the entire metro area via Rt. 60 and Rt. 288
- Excellent visibility



FLOORPLANS



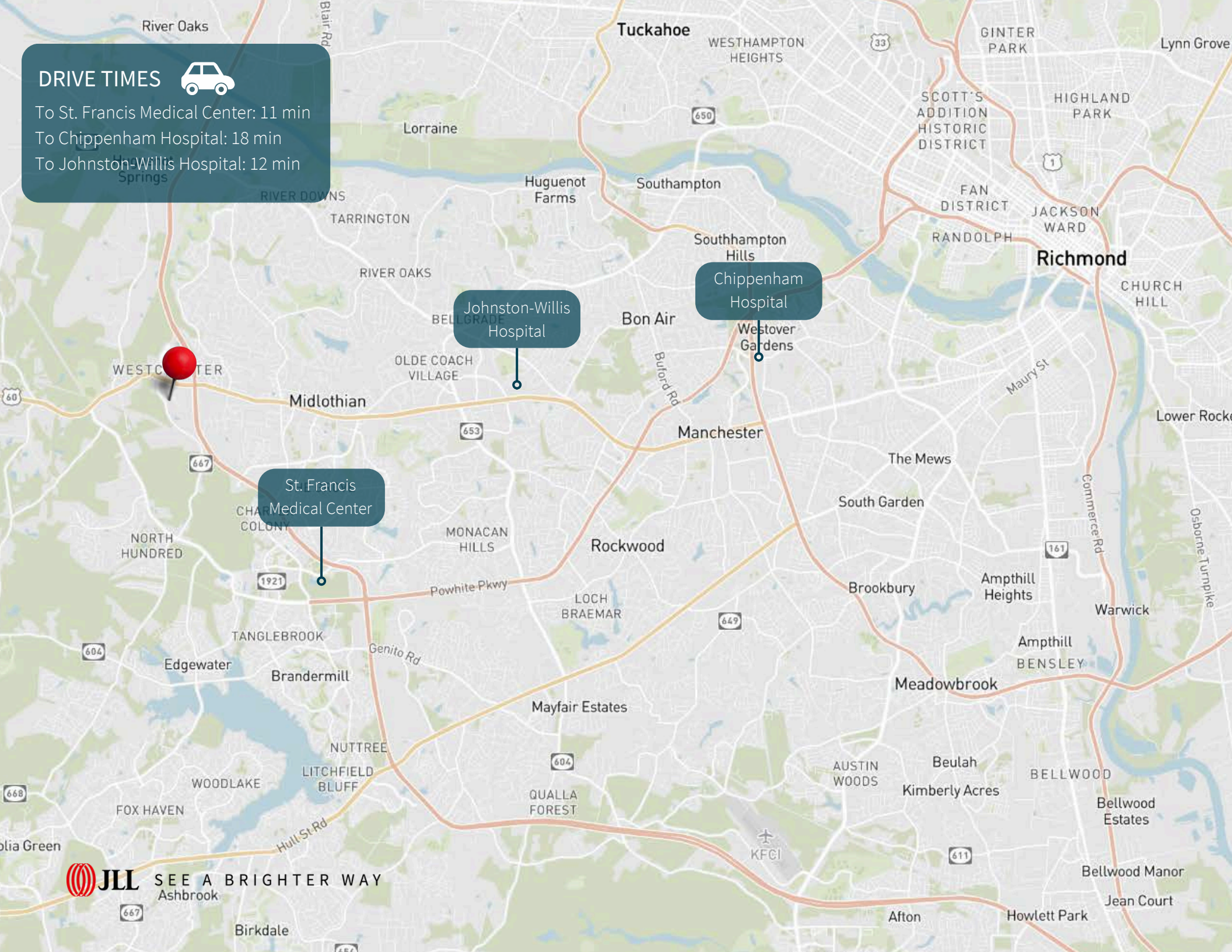
DRIVE TIMES



To St. Francis Medical Center: 11 min

To Chippenham Hospital: 18 min

To Johnston-Willis Hospital: 12 min



SEE A BRIGHTER WAY
Ashbrook



The Bella at
Westchester

The Edge at
Westchester Commons

Plaza Azteca

Orangetheory

Panera

Starbucks

Tropical Smoothie

Takara Ramen

Chick-fil-A

Five Guys

Target

Wawa

CVS

Burger King

Taco Bell

Marshalls

OfficeMax

Ulta

15350 East West Road

Bon Secours Westchester
Medical Park

OrthoVirginia



JLL

Adam Lawson

adam.lawson@jll.com

+1 (804) 200 6384

Gareth Jones

garetho.jones@jll.com

+1 (804) 200 6453

Jones Lang LaSalle Americas, Inc.

Although information has been obtained from sources deemed reliable, JLL does not make any guarantees, warranties or representations, express or implied, as to the completeness or accuracy as to the information contained herein. Any projections, opinions, assumptions or estimates used are for example only. There may be differences between projected and actual results, and those differences may be material. JLL does not accept any liability for any loss or damage suffered by any party resulting from reliance on this information. If the recipient of this information has signed a confidentiality agreement with JLL regarding this matter, this information is subject to the terms of that agreement. ©2023. Jones Lang LaSalle IP, Inc. All rights reserved.