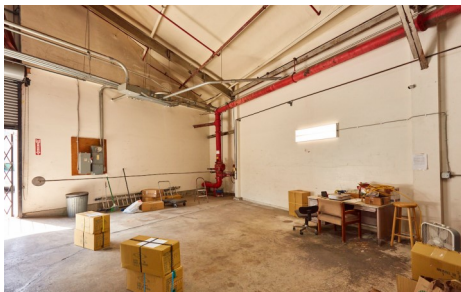


WAREHOUSE in PRIME Iwilei now AVAILABLE for LEASE!



Property Details

- Address:** Iwilei Business Center
501 Sumner Street, Suite 613 (Unit 6K-1)
Honolulu, Hawaii 96817
- Area:** Total Premises: 6,712 s.f. (includes a 5,512 s.f Warehouse and approximately 1,200 s.f. of Air Conditioned Office Space)
- Term:** One (1) to Five (5) Years
- Base Rent:** \$1.20/s.f./mo. with 3% Annual Increases in Years 2, 3, 4 and 5
- CAM:** Currently \$.14/s.f./mo.
(**NOTE:** CAM includes Water and does NOT include Electricity nor A/C Maintenance costs.)
- Electricity:** By Meter.
- Parking:** Currently Three (3) Reserved Parking Stalls (Nos. 107, 108 & 132) at \$115.00/stall/mo. (If necessary, additional two (2) Parking Stalls available for Rent separately.)

Clean 5,512 s.f. WAREHOUSE SPACE, with a fully built-out 1,200 s.f. Office, in an EASY-TO-ACCESS Building located in PRIME & CONVENIENT Iwilei, is READY for BUSINESS!

- Showings by APPOINTMENT ONLY -

REAL ESTATE
STRATEGIES LLC

Patrice A. Toledo Ornellas (R)
RB-22673
Direct: **808.478.5455**
Email: **patrice@resllc.biz**

Yumi Benedicto-Dugger (R)
RB-19137
Direct: **808.284.1010**
Email: **yumi@resllc.biz**

**Terms presented above are deemed reliable but not guaranteed. Lease documents will be made available to Tenant upon receipt of a Letter of Intent to Lease.*