

RETAIL FOR LEASE



Bloomfield Market Place

**1914 - 1952 S. Telegraph Rd
Bloomfield Hills, Michigan**



1111 W. Oakley Park Road
Suite 220
Commerce, Michigan 48390
(248) 359-9000 – Detroit Office
(616) 241-2200 – Grand Rapids Office
www.insitecommercial.com

TABLE OF CONTENTS

RETAIL FOR LEASE

Bloomfield Market Place

**1914-1952 Telegraph Road
Bloomfield Hills, Michigan**

SUMMARY	page 1
SITE PLAN	pages 2-3
PHOTOGRAPHS	page 4
AERIAL	page 5
AREA MAPS	page 6
DEMOGRAPHICS	pages 7-9
TRAFFIC COUNTS	page 10



PROPERTY SUMMARY

1

OFFICE | INDUSTRIAL | RETAIL | LAND | INVESTMENT | TENANT REPRESENTATION | CORPORATE SERVICES PROPERTY MANAGEMENT | AVIATION SERVICES

Location: Bloomfield Market Place
1914-1952 Telegraph Road
Bloomfield Hills, Michigan

Total Building Size: 20,000 sq. ft.

Available: Suite 1924 – 1,894 SF (may be combined for total of 4,594SF)
Suite 1926 – 2,700 SF (may be combined for total of 4,594SF)
Suite 1936 – 1,500 SF (Vacant)

Lease Rate: \$25 PSF, NNN

NNN: Estimated at \$5.06 PSF

Zoning: B3: General Business

Parking: 95+ Parking spots

Demographics within a

5 Mile Radius:

Population: 159,638 Persons
Households: 65,077 Homes
Avg. Annual Income: \$140,708 Annually
Traffic Counts: 62,790 VPD on Telegraph Rd.

Comments: Bloomfield Market Place is located on heavily traveled Telegraph Rd with 62,790 vehicles per day, in affluent Bloomfield Twp. Across the street from Henry Ford Medical Center and adjacent to Carl's Golfland.

For Information

Contact:

Mo Abubars

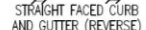
248-359-9000 ext. 7



Information contained herein was obtained from sources deemed to be reliable but is not guaranteed. Subject to prior sale, change of price or withdrawal.

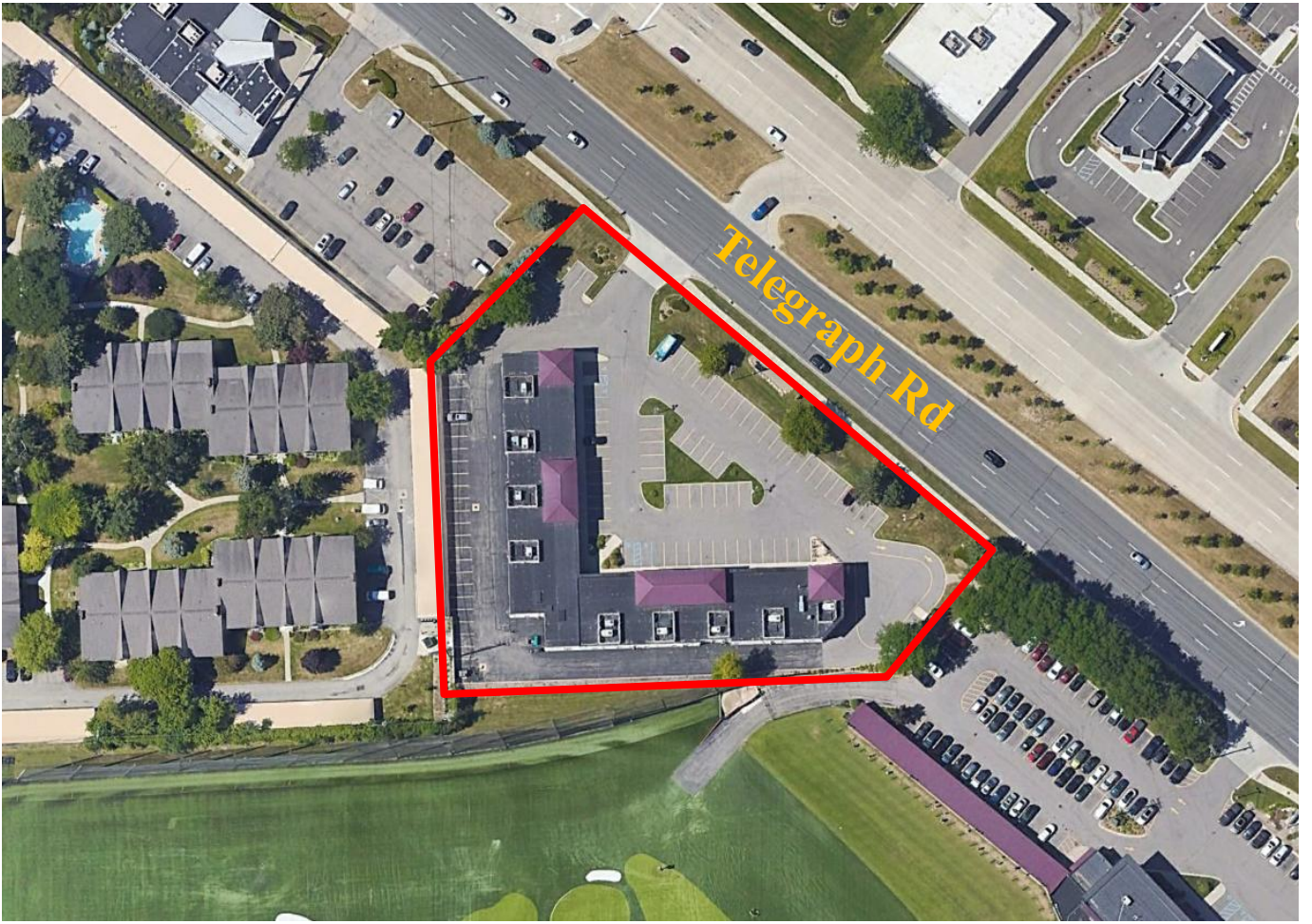
2

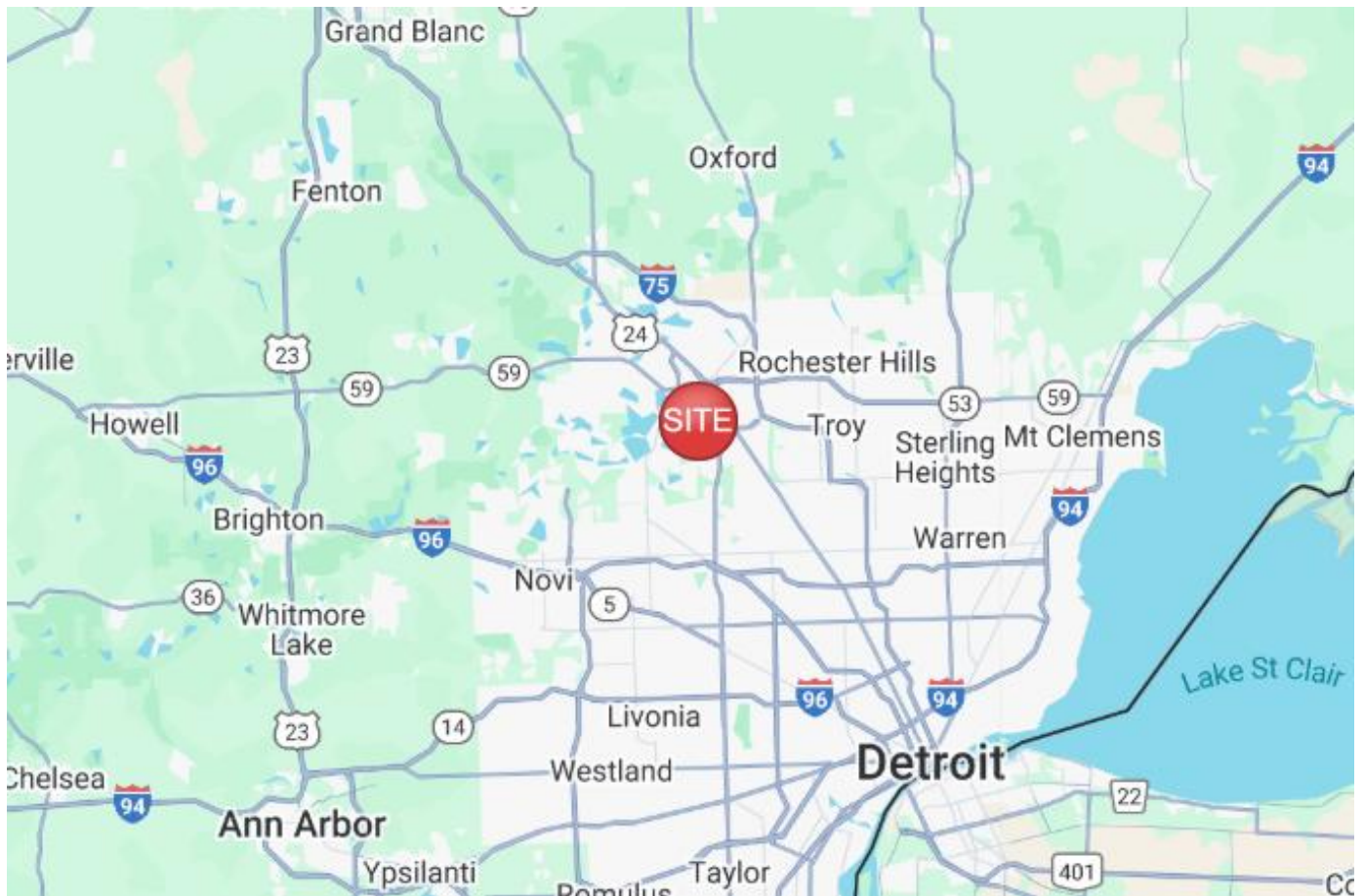
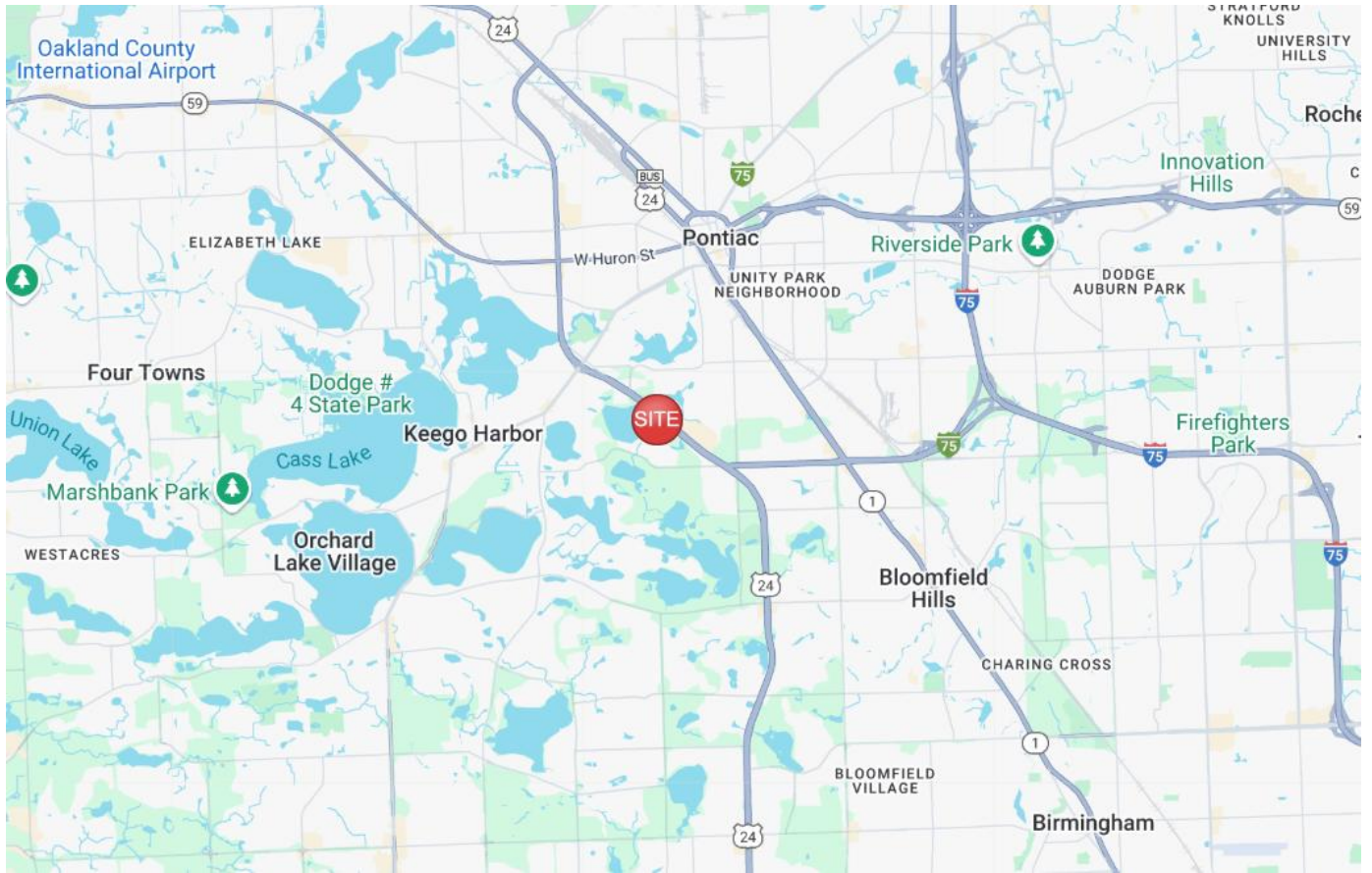
ZONED B-3

The logo for Insite COMMERCIAL features the word "Insite" in a large, bold, black sans-serif font. Above the letter "i" is a stylized red eye graphic with a black pupil and red eyelids. Below "Insite", the word "COMMERCIAL" is written in a smaller, bold, red sans-serif font.









Full Profile

2010-2020 Census, 2024 Estimates with 2029 Projections
Calculated using Weighted Block Centroid from Block Groups



Lat/Lon: 42.6102/-83.3044

1914 S Telegraph Rd Bloomfield Hills, MI 48302	1 mi radius	3 mi radius	5 mi radius
Population			
2024 Estimated Population	5,569	61,628	159,638
2029 Projected Population	5,885	62,052	158,931
2020 Census Population	4,980	57,858	155,979
2010 Census Population	4,874	58,130	153,163
Projected Annual Growth 2024 to 2029	1.1%	0.1%	-
Historical Annual Growth 2010 to 2024	1.0%	0.4%	0.3%
Households			
2024 Estimated Households	2,537	25,614	65,077
2029 Projected Households	2,684	25,782	64,744
2020 Census Households	2,203	24,038	63,128
2010 Census Households	2,071	23,145	60,156
Projected Annual Growth 2024 to 2029	1.2%	0.1%	-0.1%
Historical Annual Growth 2010 to 2024	1.6%	0.8%	0.6%
Age			
2024 Est. Population Under 10 Years	9.9%	11.2%	11.2%
2024 Est. Population 10 to 19 Years	11.3%	12.5%	12.4%
2024 Est. Population 20 to 29 Years	12.1%	12.1%	12.4%
2024 Est. Population 30 to 44 Years	17.2%	18.6%	18.9%
2024 Est. Population 45 to 59 Years	20.3%	20.3%	19.7%
2024 Est. Population 60 to 74 Years	19.7%	17.6%	17.4%
2024 Est. Population 75 Years or Over	9.4%	7.7%	7.9%
2024 Est. Median Age	43.1	40.8	40.8
Marital Status & Gender			
2024 Est. Male Population	48.5%	49.8%	49.7%
2024 Est. Female Population	51.5%	50.2%	50.3%
2024 Est. Never Married	35.6%	39.3%	36.3%
2024 Est. Now Married	35.4%	38.6%	42.9%
2024 Est. Separated or Divorced	16.9%	16.2%	15.0%
2024 Est. Widowed	12.1%	6.0%	5.8%
Income			
2024 Est. HH Income \$200,000 or More	15.9%	17.0%	18.4%
2024 Est. HH Income \$150,000 to \$199,999	6.7%	6.0%	7.9%
2024 Est. HH Income \$100,000 to \$149,999	9.6%	13.1%	14.1%
2024 Est. HH Income \$75,000 to \$99,999	10.4%	10.7%	10.4%
2024 Est. HH Income \$50,000 to \$74,999	16.5%	13.5%	14.2%
2024 Est. HH Income \$35,000 to \$49,999	11.3%	9.6%	10.3%
2024 Est. HH Income \$25,000 to \$34,999	14.2%	9.7%	8.0%
2024 Est. HH Income \$15,000 to \$24,999	4.9%	6.9%	6.0%
2024 Est. HH Income Under \$15,000	10.4%	13.6%	10.6%
2024 Est. Average Household Income	\$137,049	\$130,707	\$140,708
2024 Est. Median Household Income	\$80,788	\$87,629	\$98,321
2024 Est. Per Capita Income	\$62,559	\$54,493	\$57,482
2024 Est. Total Businesses	325	3,534	7,294
2024 Est. Total Employees	3,180	32,416	88,566

Full Profile

2010-2020 Census, 2024 Estimates with 2029 Projections
Calculated using Weighted Block Centroid from Block Groups



Lat/Lon: 42.6102/-83.3044

1914 S Telegraph Rd Bloomfield Hills, MI 48302	1 mi radius	3 mi radius	5 mi radius
Race			
2024 Est. White	46.2%	53.5%	60.1%
2024 Est. Black	39.8%	30.5%	22.8%
2024 Est. Asian or Pacific Islander	7.3%	5.6%	6.4%
2024 Est. American Indian or Alaska Native	0.1%	0.3%	0.3%
2024 Est. Other Races	6.7%	10.1%	10.4%
Hispanic			
2024 Est. Hispanic Population	340	6,394	17,404
2024 Est. Hispanic Population	6.1%	10.4%	10.9%
2029 Proj. Hispanic Population	7.0%	10.7%	11.3%
2020 Hispanic Population	5.5%	10.3%	11.8%
Education (Adults 25 & Older)			
2024 Est. Adult Population (25 Years or Over)	4,088	43,404	112,285
2024 Est. Elementary (Grade Level 0 to 8)	3.0%	3.4%	3.3%
2024 Est. Some High School (Grade Level 9 to 11)	6.3%	7.3%	6.1%
2024 Est. High School Graduate	17.3%	22.9%	21.9%
2024 Est. Some College	17.0%	19.2%	18.8%
2024 Est. Associate Degree Only	4.4%	6.5%	6.7%
2024 Est. Bachelor Degree Only	27.8%	21.6%	23.0%
2024 Est. Graduate Degree	24.2%	19.2%	20.2%
Housing			
2024 Est. Total Housing Units	2,705	27,323	69,021
2024 Est. Owner-Occupied	53.2%	58.1%	62.2%
2024 Est. Renter-Occupied	40.6%	35.7%	32.1%
2024 Est. Vacant Housing	6.2%	6.3%	5.7%
Homes Built by Year			
2024 Homes Built 2010 or later	2.9%	3.6%	3.8%
2024 Homes Built 2000 to 2009	7.9%	8.1%	7.3%
2024 Homes Built 1990 to 1999	12.0%	5.7%	8.2%
2024 Homes Built 1980 to 1989	9.1%	8.6%	10.5%
2024 Homes Built 1970 to 1979	21.1%	16.1%	17.5%
2024 Homes Built 1960 to 1969	12.2%	13.6%	15.6%
2024 Homes Built 1950 to 1959	14.9%	14.5%	15.0%
2024 Homes Built Before 1949	13.6%	23.6%	16.5%
Home Values			
2024 Home Value \$1,000,000 or More	9.1%	10.0%	8.0%
2024 Home Value \$500,000 to \$999,999	20.9%	19.4%	21.2%
2024 Home Value \$400,000 to \$499,999	7.4%	9.1%	10.8%
2024 Home Value \$300,000 to \$399,999	12.5%	13.0%	13.7%
2024 Home Value \$200,000 to \$299,999	11.3%	14.3%	15.9%
2024 Home Value \$150,000 to \$199,999	10.5%	8.4%	8.9%
2024 Home Value \$100,000 to \$149,999	11.1%	11.2%	8.2%
2024 Home Value \$50,000 to \$99,999	13.4%	10.3%	8.1%
2024 Home Value \$25,000 to \$49,999	2.0%	2.7%	2.6%
2024 Home Value Under \$25,000	1.9%	1.8%	2.6%
2024 Median Home Value	\$360,152	\$374,295	\$379,647
2024 Median Rent	\$1,032	\$1,042	\$1,058

©2025, Sites USA, Chandler, Arizona, 480-491-1112 Demographic Source: Applied Geographic Solutions 11/2024, TIGER Geography - RF1

This report was produced using data from private and government sources deemed to be reliable. The information herein is provided without representation or warranty.

Full Profile

2010-2020 Census, 2024 Estimates with 2029 Projections
Calculated using Weighted Block Centroid from Block Groups



Lat/Lon: 42.6102/-83.3044

1914 S Telegraph Rd Bloomfield Hills, MI 48302	1 mi radius	3 mi radius	5 mi radius
Labor Force			
2024 Est. Labor Population Age 16 Years or Over	4,629	50,136	129,932
2024 Est. Civilian Employed	57.0%	58.8%	60.3%
2024 Est. Civilian Unemployed	4.4%	4.8%	4.3%
2024 Est. in Armed Forces	-	-	-
2024 Est. not in Labor Force	38.6%	36.4%	35.5%
2024 Labor Force Males	47.8%	49.4%	49.4%
2024 Labor Force Females	52.2%	50.6%	50.6%
Occupation			
2024 Occupation: Population Age 16 Years or Over	2,636	29,474	78,297
2024 Mgmt, Business, & Financial Operations	21.2%	20.4%	20.6%
2024 Professional, Related	33.3%	27.8%	29.0%
2024 Service	17.4%	16.6%	15.3%
2024 Sales, Office	15.4%	16.3%	16.9%
2024 Farming, Fishing, Forestry	0.1%	-	-
2024 Construction, Extraction, Maintenance	3.5%	5.0%	5.9%
2024 Production, Transport, Material Moving	9.1%	13.7%	12.3%
2024 White Collar Workers	69.9%	64.6%	66.4%
2024 Blue Collar Workers	30.1%	35.4%	33.6%
Transportation to Work			
2024 Drive to Work Alone	72.6%	70.1%	70.3%
2024 Drive to Work in Carpool	8.3%	7.3%	6.8%
2024 Travel to Work by Public Transportation	0.4%	0.7%	0.5%
2024 Drive to Work on Motorcycle	-	-	-
2024 Walk or Bicycle to Work	1.3%	1.5%	1.5%
2024 Other Means	1.0%	1.1%	1.1%
2024 Work at Home	16.4%	19.3%	19.7%
Travel Time			
2024 Travel to Work in 14 Minutes or Less	26.6%	27.6%	26.6%
2024 Travel to Work in 15 to 29 Minutes	40.6%	39.7%	39.1%
2024 Travel to Work in 30 to 59 Minutes	28.9%	28.8%	30.3%
2024 Travel to Work in 60 Minutes or More	4.0%	4.0%	4.0%
2024 Average Travel Time to Work	22.0	21.6	22.1
Consumer Expenditure			
2024 Est. Total Household Expenditure	\$248.88 M	\$2.61 B	\$7.01 B
2024 Est. Apparel	\$4.56 M	\$48.06 M	\$128.94 M
2024 Est. Contributions, Tax and Retirement	\$72.4 M	\$753.94 M	\$2.08 B
2024 Est. Education	\$5.71 M	\$59.53 M	\$161.55 M
2024 Est. Entertainment	\$14.12 M	\$148.82 M	\$398.72 M
2024 Est. Food, Beverages, Tobacco	\$29.13 M	\$310.4 M	\$820.39 M
2024 Est. Health Care	\$16.85 M	\$170.22 M	\$434.18 M
2024 Est. Household Furnishings and Equipment	\$6.59 M	\$69.21 M	\$186.24 M
2024 Est. Household Operations, Shelter, Utilities	\$55.84 M	\$583.22 M	\$1.54 B
2024 Est. Miscellaneous Expenses	\$4.22 M	\$44.3 M	\$119.12 M
2024 Est. Personal Care	\$3.09 M	\$33.02 M	\$87.04 M
2024 Est. Transportation	\$36.38 M	\$390.08 M	\$1.06 B

©2025, Sites USA, Chandler, Arizona, 480-491-1112 Demographic Source: Applied Geographic Solutions 11/2024, TIGER Geography - RF1

This report was produced using data from private and government sources deemed to be reliable. The information herein is provided without representation or warranty.

