

LEGEND

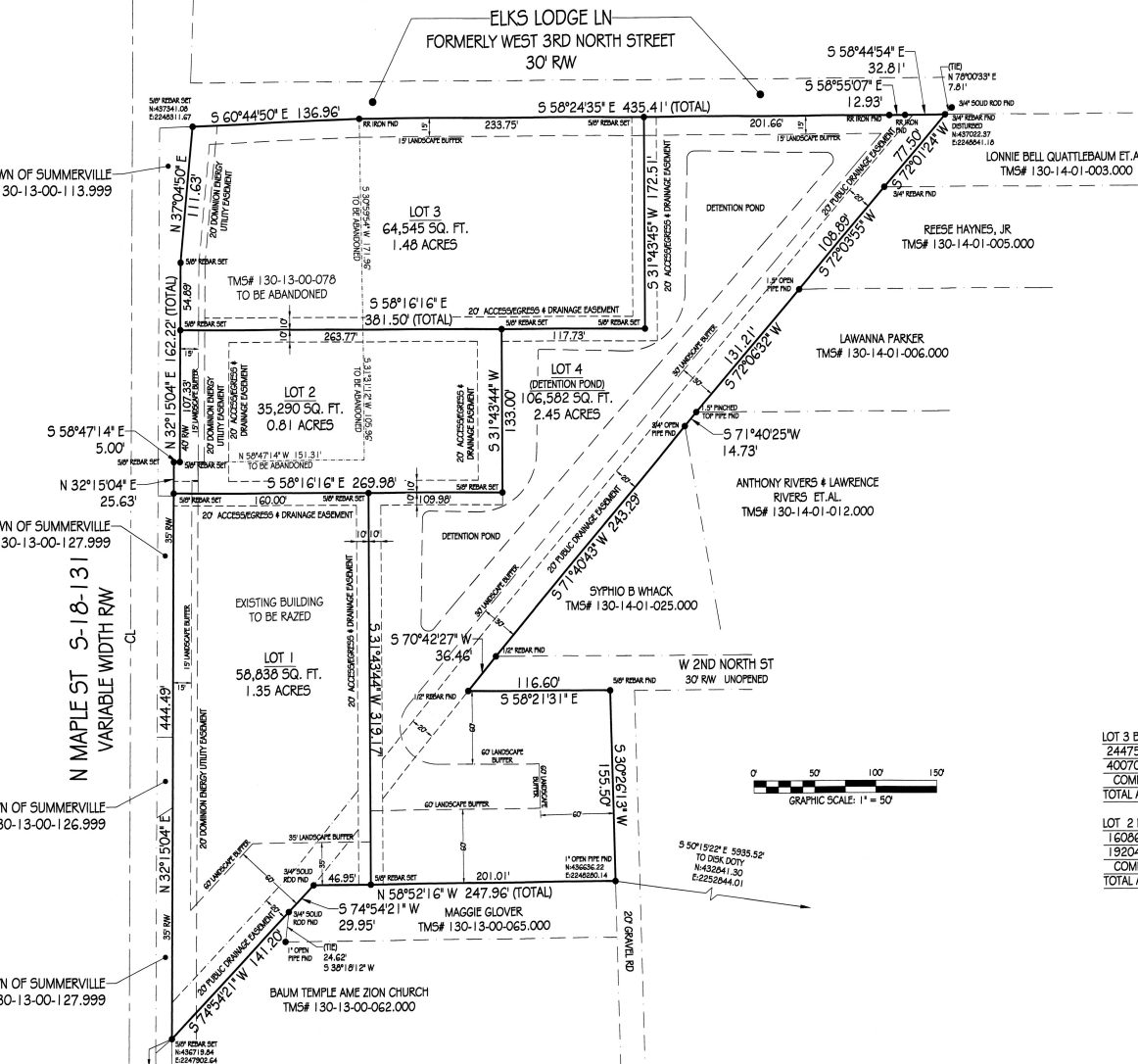
1. UNRECORDED	2. UNRECORDED	3. UNRECORDED	4. UNRECORDED
5. UNRECORDED	6. UNRECORDED	7. UNRECORDED	8. UNRECORDED
9. UNRECORDED	10. UNRECORDED	11. UNRECORDED	12. UNRECORDED
13. UNRECORDED	14. UNRECORDED	15. UNRECORDED	16. UNRECORDED
17. UNRECORDED	18. UNRECORDED	19. UNRECORDED	20. UNRECORDED
21. UNRECORDED	22. UNRECORDED	23. UNRECORDED	24. UNRECORDED
25. UNRECORDED	26. UNRECORDED	27. UNRECORDED	28. UNRECORDED
29. UNRECORDED	30. UNRECORDED	31. UNRECORDED	32. UNRECORDED
33. UNRECORDED	34. UNRECORDED	35. UNRECORDED	36. UNRECORDED
37. UNRECORDED	38. UNRECORDED	39. UNRECORDED	40. UNRECORDED
41. UNRECORDED	42. UNRECORDED	43. UNRECORDED	44. UNRECORDED
45. UNRECORDED	46. UNRECORDED	47. UNRECORDED	48. UNRECORDED
49. UNRECORDED	50. UNRECORDED	51. UNRECORDED	52. UNRECORDED
53. UNRECORDED	54. UNRECORDED	55. UNRECORDED	56. UNRECORDED
57. UNRECORDED	58. UNRECORDED	59. UNRECORDED	60. UNRECORDED
61. UNRECORDED	62. UNRECORDED	63. UNRECORDED	64. UNRECORDED
65. UNRECORDED	66. UNRECORDED	67. UNRECORDED	68. UNRECORDED
69. UNRECORDED	70. UNRECORDED	71. UNRECORDED	72. UNRECORDED
73. UNRECORDED	74. UNRECORDED	75. UNRECORDED	76. UNRECORDED
77. UNRECORDED	78. UNRECORDED	79. UNRECORDED	80. UNRECORDED
81. UNRECORDED	82. UNRECORDED	83. UNRECORDED	84. UNRECORDED
85. UNRECORDED	86. UNRECORDED	87. UNRECORDED	88. UNRECORDED
89. UNRECORDED	90. UNRECORDED	91. UNRECORDED	92. UNRECORDED
93. UNRECORDED	94. UNRECORDED	95. UNRECORDED	96. UNRECORDED
97. UNRECORDED	98. UNRECORDED	99. UNRECORDED	100. UNRECORDED

- REFERENCES**
- DEED BOOK 14371, PAGE 26
 - DEED BOOK 14160, PAGE 247
 - DEED BOOK 13753, PAGE 226
 - BOUNDARY, TOPOGRAPHIC & TREE SURVEY, BY RICHARD L. WOOTEN, JR., SC PLS# 18938, DATED MAY 26, 2021, UNRECORDED, IN OUR FILES
 - DEED BOOK 12976, PAGE 110 (RIGHT-OF-WAY N. MAPLE ST. S-131)
 - DEED BOOK 12223, PAGE 95
 - DEED BOOK 12048, PAGE 117
 - BOUNDARY SURVEY OF T.M.S. 130-13-00-085, BY PAUL C. JAMISON, SC PLS# 14191, DATED APRIL 11, 1999, RECORDED IN THE OFFICE OF THE RECORDER OF DEEDS IN DORCHESTER COUNTY, PLAT BOOK J, PAGE 137, JULY 13, 1999

- NOTES**
- TMS# 130-13-00-078 & 130-13-00-085
 - ZONED U TOWN OF SUMMERVILLE
 - THIS PROPERTY IS LOCATED IN FLOOD ZONE X, AS PER FIRM PANEL NO. 453550357E, DATED 7-18-2017
 - THIS PROPERTY WAS SURVEYED BY REFERENCE PLATS AND FIELD INFORMATION. NO TITLE SEARCH WAS PERFORMED BY ME NOR THIS COMPANY AS TO THE CLEAR TITLE TO THE PROPERTY.
 - THIS PROPERTY MAY BE SUBJECT TO OTHER UTILITY EASEMENTS, SUCH AS STORM SEWER, SANITARY SEWER, ELECTRIC, AND/OR TELEPHONE, THAT WERE NOT FOUND BY THE REFERENCE DEEDS OR PLATS NOTED HEREON. THIS PLAT DOES NOT DEFINE OR ADDRESS ANY SUBTERRANEAN CONDITIONS OF ANY OF THESE EASEMENTS, UNLESS NOTED SPECIFICALLY HEREON.
 - IF THE SIGNATURE UPON THIS PAPER IS NOT IN RED INK ALONG WITH A RAISED EMBOSSED SEAL, THIS DOCUMENT IS NOT AN ORIGINAL SURVEY. ITEMS MAY BE MARKED WITH ITEMS THAT HAVE ADDED AND/OR CHANGED FROM THE ORIGINAL DRAWING.

I, JOHN DAVID BAIS, HEREBY STATE TO THE BEST OF MY KNOWLEDGE, INFORMATION, AND BELIEF, THAT THE SURVEY SHOWN HEREON WAS MADE IN ACCORDANCE WITH THE REQUIREMENTS OF THE MINIMUM STANDARDS MANUAL FOR THE PRACTICE OF LAND SURVEYING IN SOUTH CAROLINA, AND MEETS OR EXCEEDS THE REQUIREMENTS FOR A CLASS "A" SURVEY AS SPECIFIED THEREIN. THERE ARE NO VISIBLE, TO THE SURVEYOR WHEN ON SITE, ENCROACHMENTS OR PROJECTIONS OTHER THAN THOSE NOTED ABOVE.

JOHN DAVID BAIS, PLS.
S.C. REGISTRATION NO. 15388



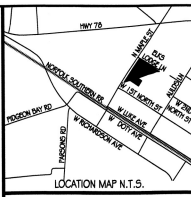
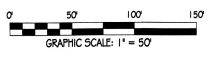
ASSOCIATED SURVEYORS OF SUMMERVILLE
P.O. BOX 6, SUMMERVILLE, S.C. 29484
843-873-1061
ASSOCIATEDSURVEYORSOFSC.COM
COPYRIGHT 2013 BY ASSOCIATED SURVEYORS, LLC OF SUMMERVILLE

LOT 3 BREAKDOWN

24475 SQ. FT. (0.56 ACRES) OF TMS# 130-13-00-078
40070 SQ. FT. (0.92 ACRES) OF TMS# 130-13-00-085
COMBINED
TOTAL AREA OF LOT 3 64545 SQ. FT. (1.48 ACRES)

LOT 2 BREAKDOWN

16086 SQ. FT. (0.37 ACRES) OF TMS# 130-13-00-078
19204 SQ. FT. (0.44 ACRES) OF TMS# 130-13-00-085
COMBINED
TOTAL AREA OF LOT 2 35290 SQ. FT. (0.81 ACRES)



PLATS RECORDING FEES \$25.00
BK O PG 549-549
MARGARET L. BAILEY
REGISTERED SURVEYOR
DORCHESTER COUNTY, SC

Greg Owens
408 Third St.
Charleston, SC 29472



JOB NO.: 2023-158
SURVEY DATE: OCTOBER 21, 2023
- REVISED NOVEMBER 14, 2023
PER TRC MEETING COMMENTS
- REVISED NOVEMBER 15, 2023 PER TOWN OF SUMMERVILLE COMMENTS
- REVISED NOVEMBER 28, 2023 PER TOWN OF SUMMERVILLE COMMENTS
FILE NAME: (owens_309_north_maple)

DEDICATION STATEMENT
BY THE RECORDING OF THIS PLAT, I HEREBY DEDICATE THE 20' PUBLIC DRAINAGE EASEMENT SHOWN HEREON TO THE TOWN OF SUMMERVILLE FOREVER. NOTHING IN THIS DEDICATION SHALL BE CONSTRUED TO IMPLY AN ACCEPTANCE BY THE TOWN OF SUMMERVILLE OF ANY ROADWAY OR DRAINAGE FACILITY OR AS CREATING ANY DUTY BY THE TOWN OF SUMMERVILLE TO MAINTAIN ANY ROADWAY, RIGHTS-OF-WAY, OR DRAINAGE EASEMENTS SHOWN HEREON.

SIGNATURE: POSITION, COMPANY DATE: 12/11/23
PREP: Greg Owens, Member 309 North Maple, LLC
SIGNATURE: POSITION, COMPANY

SOUTH CAROLINA DORCHESTER COUNTY
TOWN OF SUMMERVILLE
LOT LINE ABANDONMENT PLAT & DIVISION PLAT
COMBINING TMS#S 130-13-00-078 &
130-13-00-085, THEN DIVIDING INTO 4 PARCELS
OWNED BY: 309 NORTH MAPLE LLC