

Señákw

RETAIL FOR LEASE



BORN FROM
THE LAND

Marcus & Millichap

Where It Begins

Señákw is a living village built on connection and continuity, where every partnership and every space contributes to something larger: a future rooted in purpose and place.





The Shape of Señákw

- 6,000+ rental homes: designed for families, singles, and elders alike, fostering an inclusive community where everyone belongs.
- 200,000 SF of commercial space: shops, offices, and gathering places that spark connection and contribute to the rhythm of the village.
- Living culture: public art, ancestral design, and Skwxwú7mesh-led programming bring story and spirit into everyday life.
- Sustainability at scale: powered by renewable energy, with green corridors that protect and restore the land.

The Setting

At the foot of the Burrard Bridge, in the heart of Sk̓wx̓wú7mesh territory, a new village is taking shape. Señákw has always been here—in the land, the stories, and the people. What's new is the chance to share it.

Created by the Sk̓wx̓wú7mesh Úxwumixw (Squamish Nation), this is a purpose-built community shaped by connection and care for what's ahead. Its first phase introduces over 20,000 square feet of thoughtfully designed retail, inviting businesses to thrive where community and commerce meet. Lined with pathways and plazas, these retail spaces open onto a lively village, welcoming residents and visitors to gather and explore.



Village Features

PRIME EXPOSURE

Strategically located along the False Creek waterfront, with seamless access to downtown Vancouver, Kitsilano, and surrounding neighbourhoods.

CULTURAL RESONANCE

Retail spaces reflect Skwxwú7mesh design and storytelling through public art and architecture, offering an immersive experience rooted in place.

SUSTAINABILITY LEADERSHIP

LEED Platinum-targeted spaces featuring energy-efficient systems, green infrastructure, and a low-carbon footprint.

COMMUNITY HUB

Anchored by more than 6,000 rental homes, ensuring steady foot traffic and a vibrant, self-sustaining village atmosphere.





Key Details

MUNICIPAL ADDRESS:
1302-1370 Señákw Lane, Vancouver, B.C.

SIZE:
1,270 - 5,070 SF

ASKING NET RENT:
Contact Listing Agents

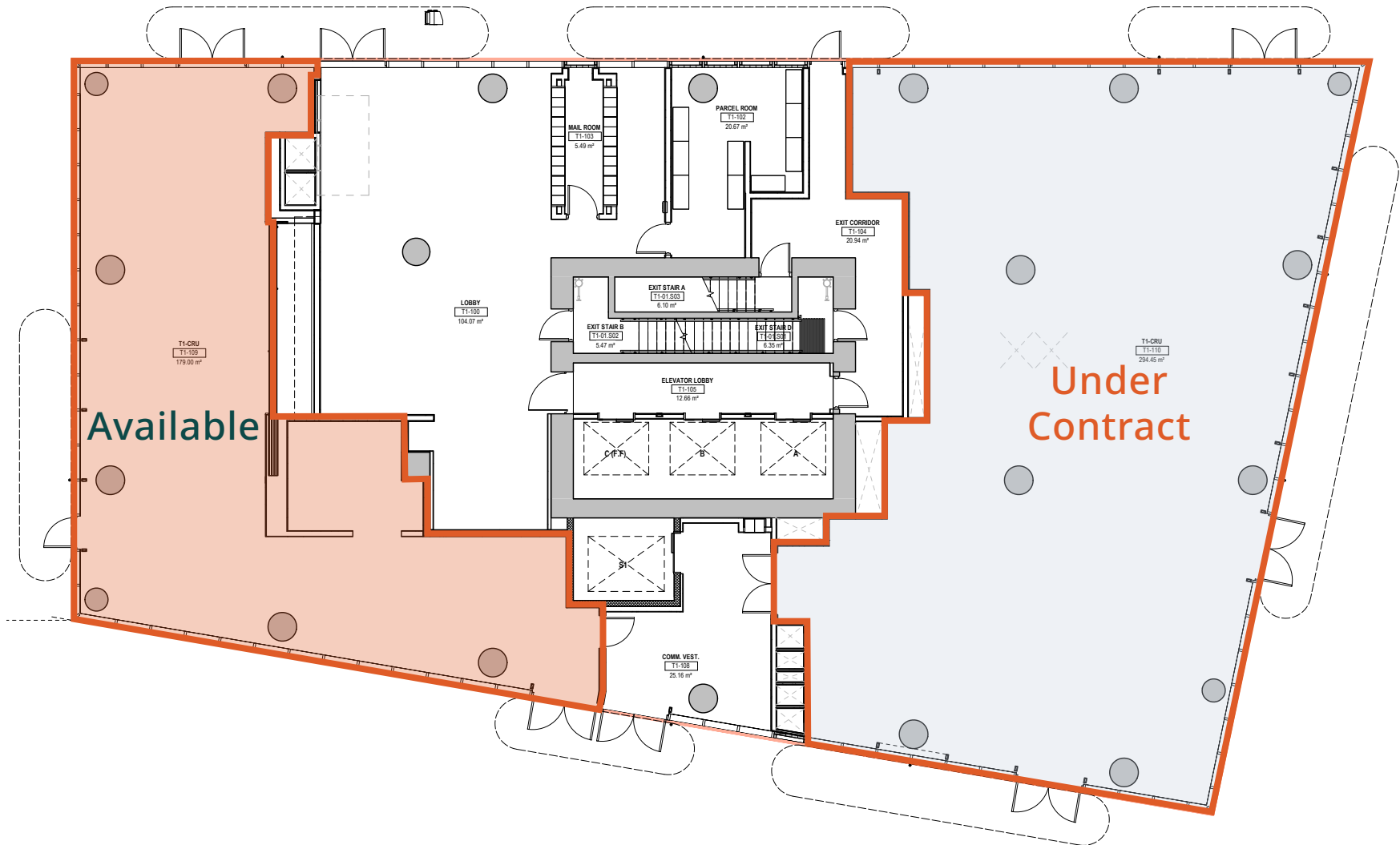
ADDITIONAL RENT:
Contact Listing Agents

ZONING:
CD**

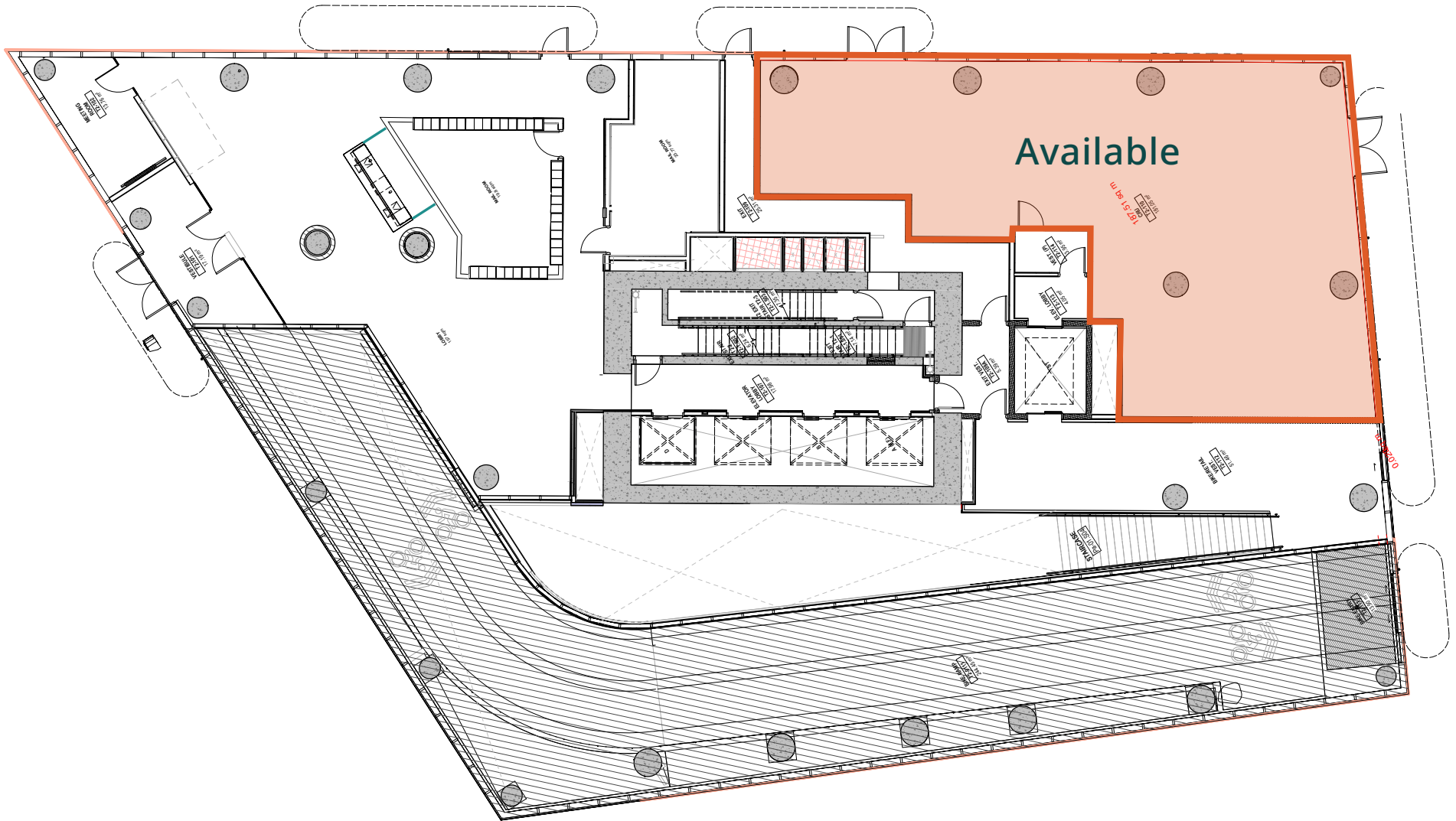
AVAILABILITY:
Tower 1: January 2026
Tower 2/3: August 2026
Pavilion: August 2026

* Approximate and subject to change from time to time.
** Tenant is responsible for verifying the permissible uses as per the zoning.

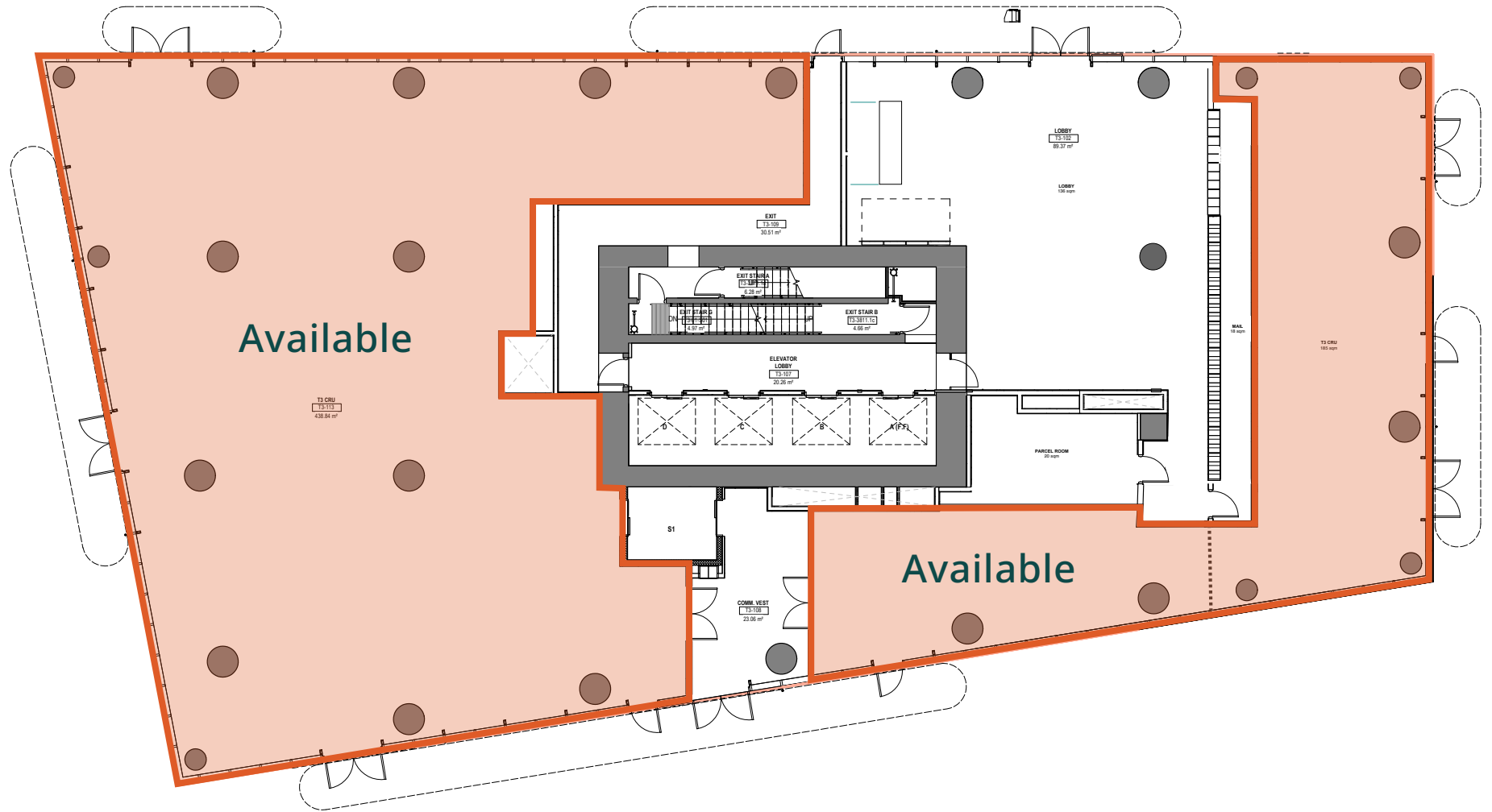
Floor Plan - Tower 1



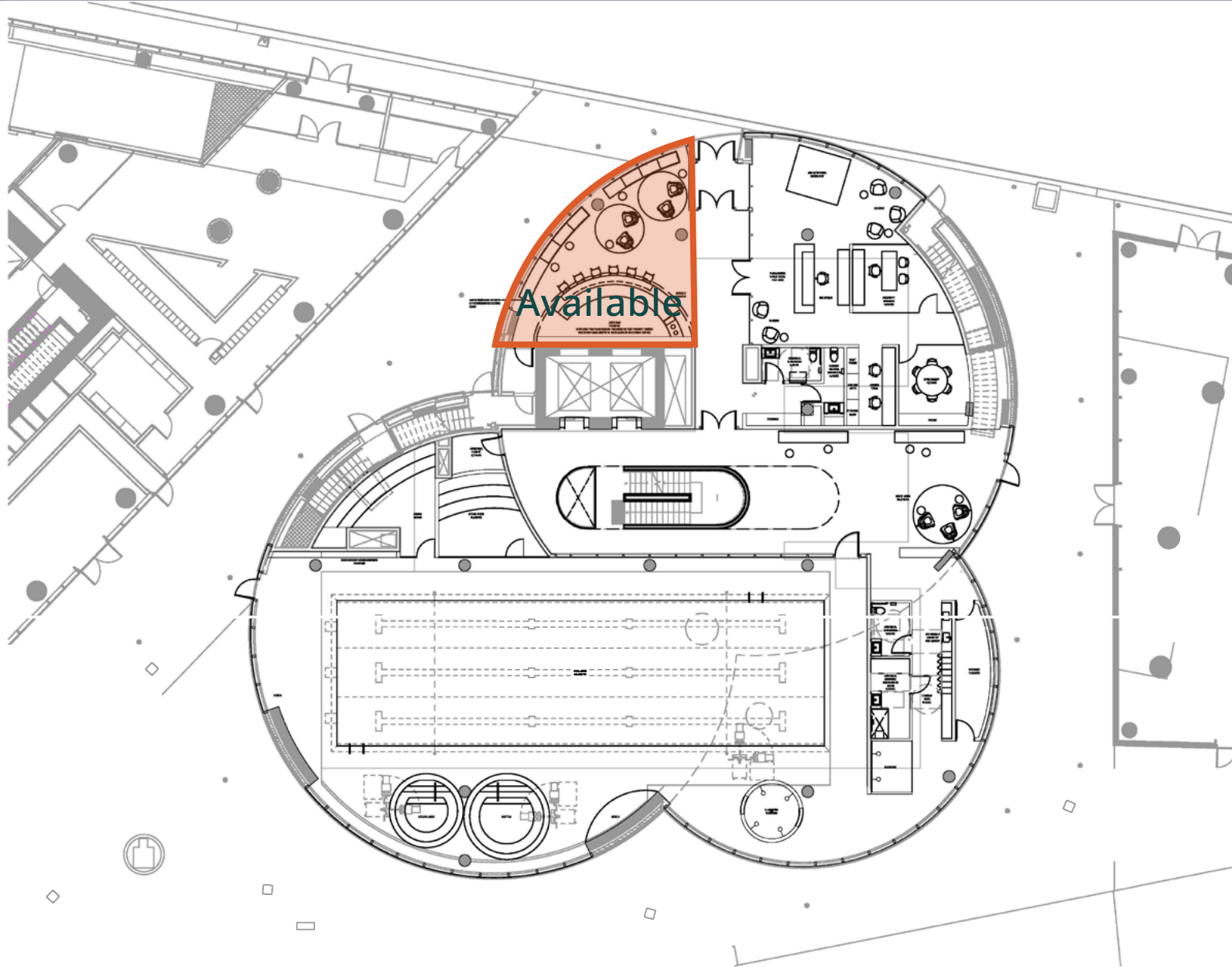
Floor Plan - Tower 2



Floor Plan - Tower 3



Floor Plan - Pavilion



Amenity Map



MARIO NEGRIS

Personal Real Estate Corporation
Senior Managing Director
Mario.Negris@MarcusMillichap.com
604-638-2121

MARTIN MORIARTY

Personal Real Estate Corporation
Senior Managing Director
Martin.Moriarty@MarcusMillichap.com
604-675-5255

JOSH COCHRANE

Director
Josh.Cochrane@MarcusMillichap.com
604-675-5232



Señákw

Marcus & Millichap

1100 - 1111 West Georgia Street
Vancouver, BC V6E 4M3

T (604) 638-2121
F (604) 638-2122

The information contained in the following Marketing Brochure is proprietary and strictly confidential. It is intended to be reviewed only by the party receiving it from Marcus & Millichap and should not be made available to any other person or entity without the written consent of Marcus & Millichap. This Marketing Brochure has been prepared to provide summary, unverified information to prospective purchasers, and to establish only a preliminary level of interest in the subject property. The information contained herein is not a substitute for a thorough due diligence investigation. Marcus & Millichap has not made any investigation, and makes no warranty or representation, with respect to the income or expenses for the subject property, the future projected financial performance of the property, the size and square footage of the property and improvements, the presence or absence of contaminating substances, PCBs or asbestos, the compliance with State and Federal regulations, the physical condition of the improvements thereon, or the financial condition or business prospects of any tenant, or any tenant's plans or intentions to continue its occupancy of the subject property. The information contained in this Marketing Brochure has been obtained from sources we believe to be reliable; however, Marcus & Millichap has not verified, and will not verify, any of the information contained herein, nor has Marcus & Millichap conducted any investigation regarding these matters and makes no warranty or representation whatsoever regarding the accuracy or completeness of the information provided. All potential buyers must take appropriate measures to verify all of the information set forth herein.

Marcus & Millichap is not affiliated with, sponsored by, or endorsed by any commercial tenant or lessee identified in this marketing package. The presence of any corporation's logo or name is not intended to indicate or imply affiliation with, or sponsorship or endorsement by, said corporation of Marcus & Millichap, its affiliates or subsidiaries, or any agent, product, service, or commercial listing of Marcus & Millichap, and is solely included for the purpose of providing tenant lessee information about this listing to prospective customers. This information has been secured from sources we believe to be reliable, but we make no representations or warranties, express or implied, as to the accuracy of the information. References to square footage or age are approximate. Buyer must verify the information and bears all risk for any inaccuracies. Marcus & Millichap is a trademark of Marcus & Millichap Real Estate Investment Services, Inc. Used under license by Marcus & Millichap Real Estate Investment Services Canada Inc. © 2026 Marcus & Millichap. All rights reserved.