

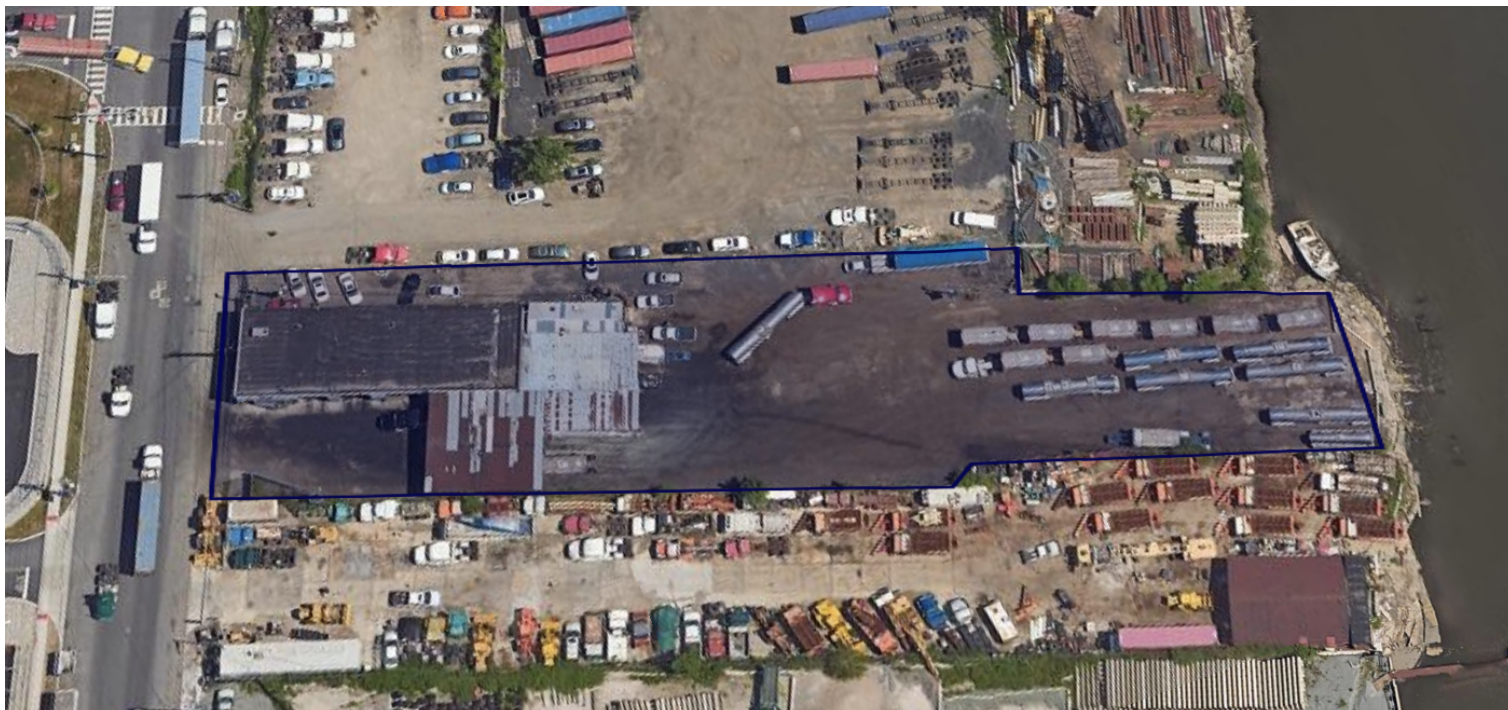
184 Doremus Avenue

Newark, NJ 07105

FOR SALE AND LEASE Industrial Property



PRE
Real Estate Services



VIDEO

Offering Summary

Sale Price:	Subject To Offer
Lease Rate:	Negotiable
Acreage:	1 Acres
Building Size:	9,600 SF

Property Information

Occupancy:	Immediate
Zoning:	Industrial
Access:	4 Drive-Ins
Ceiling Height:	18'
Taxes:	\$47,690.65

Property Description

We are proud to introduce this industrial land parcel available for sale. An opportunity for businesses seeking a strategic location to Downsize, expand, or establish their operations in this area. Consisting of one acre of land of industrial property, This building ceiling includes an 18' average ceiling height. It also includes four drive-in doors and two drive through bays.

The property is graded with millings or paved, conducive for cars and heavy equipment. Equipped with service by full public utilities including heavy three-phase power, public water/sewer, and natural gas. This real estate holding presents an excellent opportunity, whether you're considering it for an investment sale or as property for personal use.

John Notte

Director of Investment Sales
973.690.5663
nottecre@outlook.com

Jason Marzano

Director of Leasing
201.341.7107
jmarzano@pre-services.com

PRE Commercial Real Estate

844 McCarter Highway
Newark, NJ 07102
973.690.5663
pre-services.com

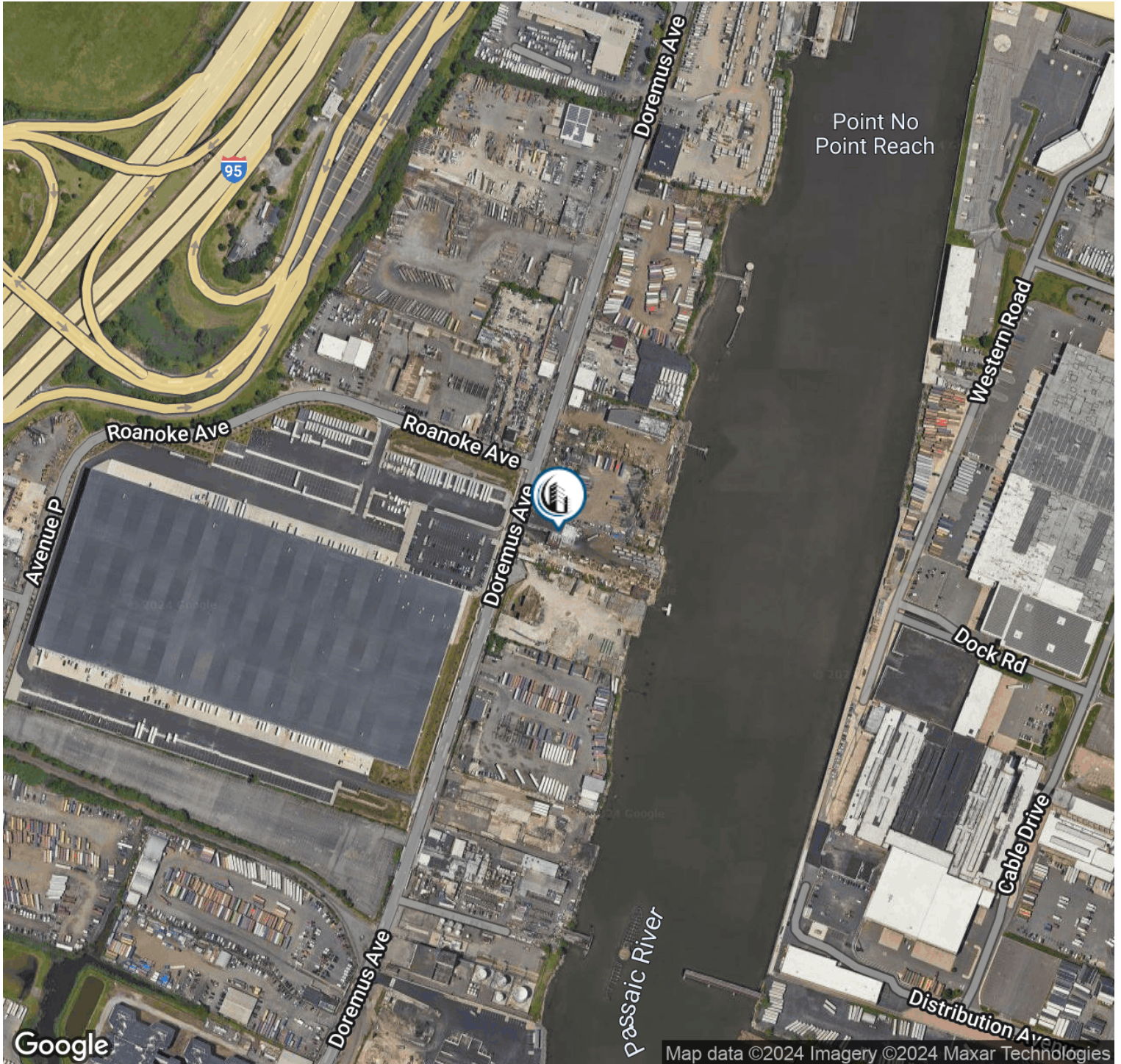
184 Doremus Avenue

Newark, NJ 07105

FOR SALE AND LEASE Industrial Property



PRE
Real Estate Services



John Notte

Director of Investment Sales
973.690.5663
nottecre@outlook.com

Jason Marzano

Director of Leasing
201.341.7107
jmarzano@pre-services.com

PRE Commercial Real Estate

844 McCarter Highway
Newark, NJ 07102
973.690.5663
pre-services.com

No warranty or representation, express or implied, is made to the accuracy or completeness of the information contained herein, and same is submitted subject to errors, omissions, change of price, rental or other conditions, withdrawal without notice, and to any special listing conditions imposed by the property owner(s). As applicable, we make no representation as to the condition of the property (or properties) in question.