

# EXCELLENT ACCESS TO I-90 & SPOKANE AIRPORT



**FOR LEASE | 20,820 SF BUILDING**

**2823 S CRAIG RD**  
**AIRWAY HEIGHTS, WA 99001**

## Property Details

Airway Heights is experiencing rapid growth, with a major contributing factor being its proximity to the Spokane/Coeur d'Alene area. This property offers convenient access to both I-90 and State Highway 2.

**OPEN  
LISTING  
FOR ALL  
BROKERS**

## Property Details

**New Office: 1,894 SF**  
**Warehouse: 20,820 SF**  
**Yard Area: 501,863 SF**

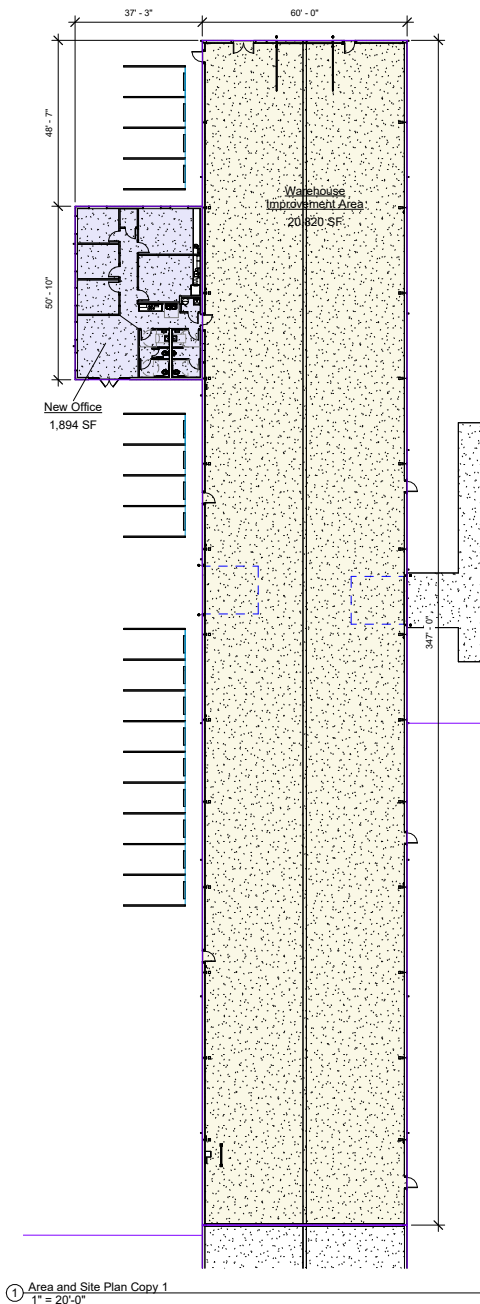
- (2) 16'x14' Grade Doors
- (1) 14'x16' Grade Door
- (1) 5 ton Crane @ 14'-9"
- (2) 10 ton Cranes @ 15'-7"
- 21' Clear Height, 23'- 6" At Peak
- BNSF Access 375' Rail Spur
- Additional Length of Rail Spur Available

**Warehouse Lease Rate**  
**Upon Request**

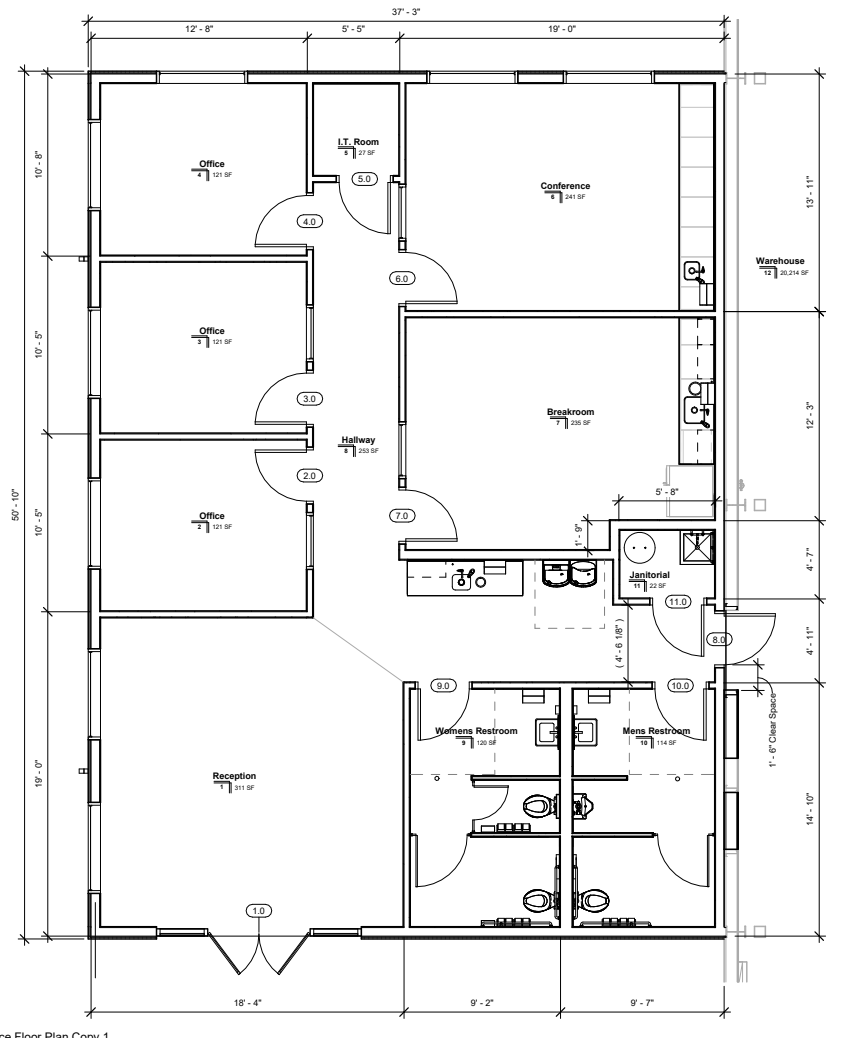
# FOR LEASE | OFFICE / WAREHOUSE / YARD

2823 S CRAIG RD | AIRWAY HEIGHTS, WA 99001

## POTENTIAL LAYOUT



## NEW OFFICE - 1,894 SF



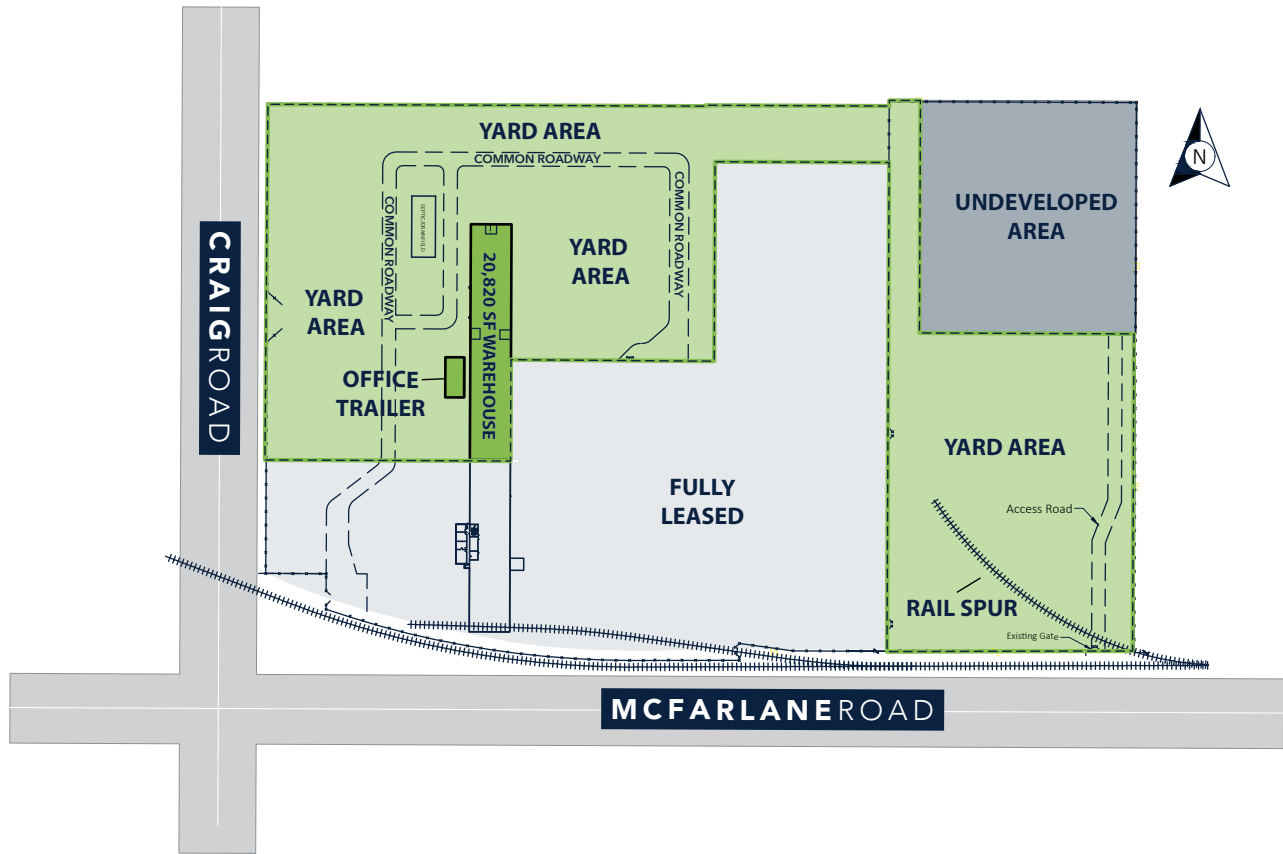
### Planned Improvements:

- New LED Lighting
- New Insulation
- New Roof
- Freshly Painted
- New Warehouse Heating

# FOR LEASE | OFFICE / WAREHOUSE / YARD

2823 S CRAIG RD | AIRWAY HEIGHTS, WA 99001

## FLOOR PLAN



# FOR LEASE | OFFICE / WAREHOUSE / YARD

2823 S CRAIG RD | AIRWAY HEIGHTS, WA 99001

## IMAGES



# FOR LEASE | OFFICE / WAREHOUSE / YARD

2823 S CRAIG RD | AIRWAY HEIGHTS, WA 99001

## MAP

