

WESTRAC DR OFFICE

1202 WESTRAC DR, FARGO, ND 58103



FOR LEASE



MULTI-STORY OFFICE SPACE FOR LEASE IN CENTRAL LOCATION

Space Available: 8,530 - 34,120 SF

Base Rent: \$14.00 PSF | NNN

Patrick Vesey | 701.239.5840

patrick.vesey@goldmark.com

Goldmark Commercial Real Estate

www.goldmarkcommercial.com

WESTRAC DR OFFICE

1202 WESTRAC DR, FARGO, ND 58103

GOLDMARKTM
COMMERCIAL REAL ESTATE INC

SPACE AVAILABLE

8,530 - 34,120 SF

BASE RENT

\$14.00 PSF | NNN

TENANT EXPENSES

Heat/Electric/AC
Water/Sewer/Garbage
Phone/Internet
Janitorial
Taxes/Insurance
Repairs/Maintenance

PROPERTY DESCRIPTION:

Multi-story office building with space for lease. Large open atrium style reception with elevator and ample parking. Space can be sub-divided or the whole building could be leased for a larger tenant. Central location near I-29 & I-94.

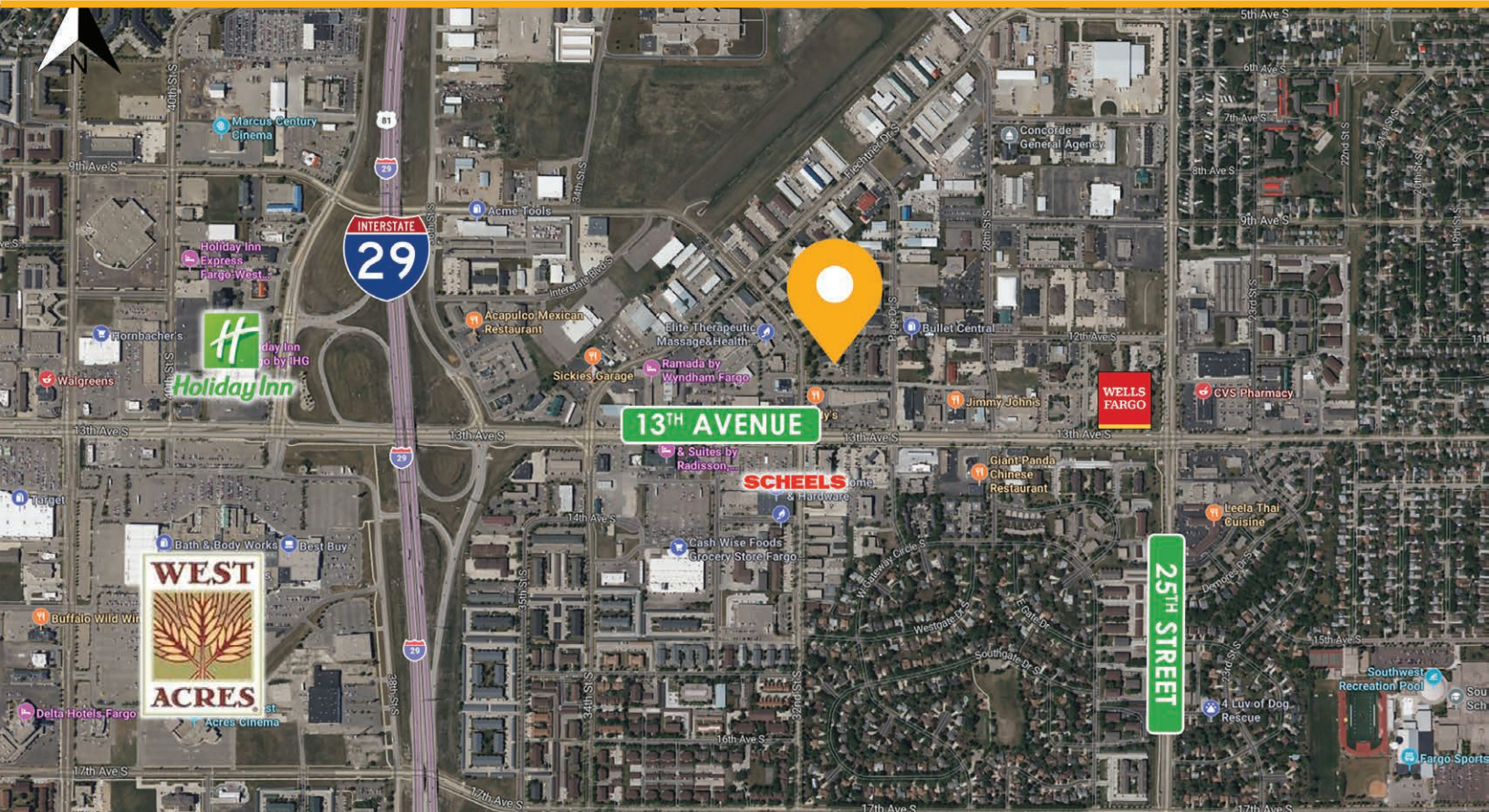
PROPERTY FEATURES

- Many different office sizes and conference/break rooms
- Exercise room with attached showers
- Kitchenette
- Large training rooms
-

NEIGHBORS

- Scheels Home & Hardware
- Cashwise Grocery

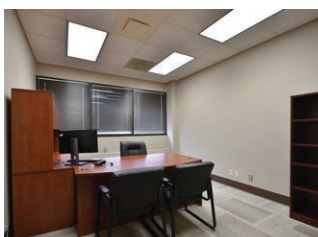
This information has been secured from sources we believe to be reliable, but we make no representation or warranties, expressed or implied, as to the accuracy of the information. Interested parties should conduct their own independent investigations and rely only on those results.



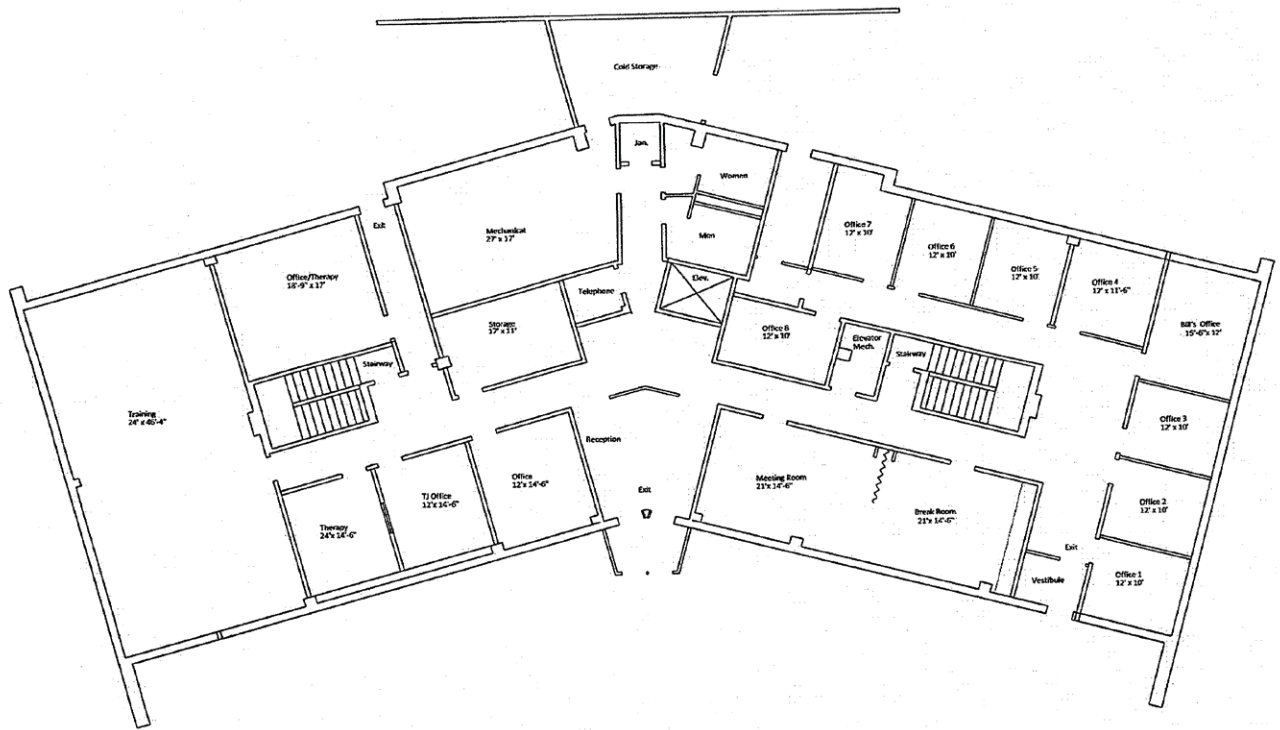
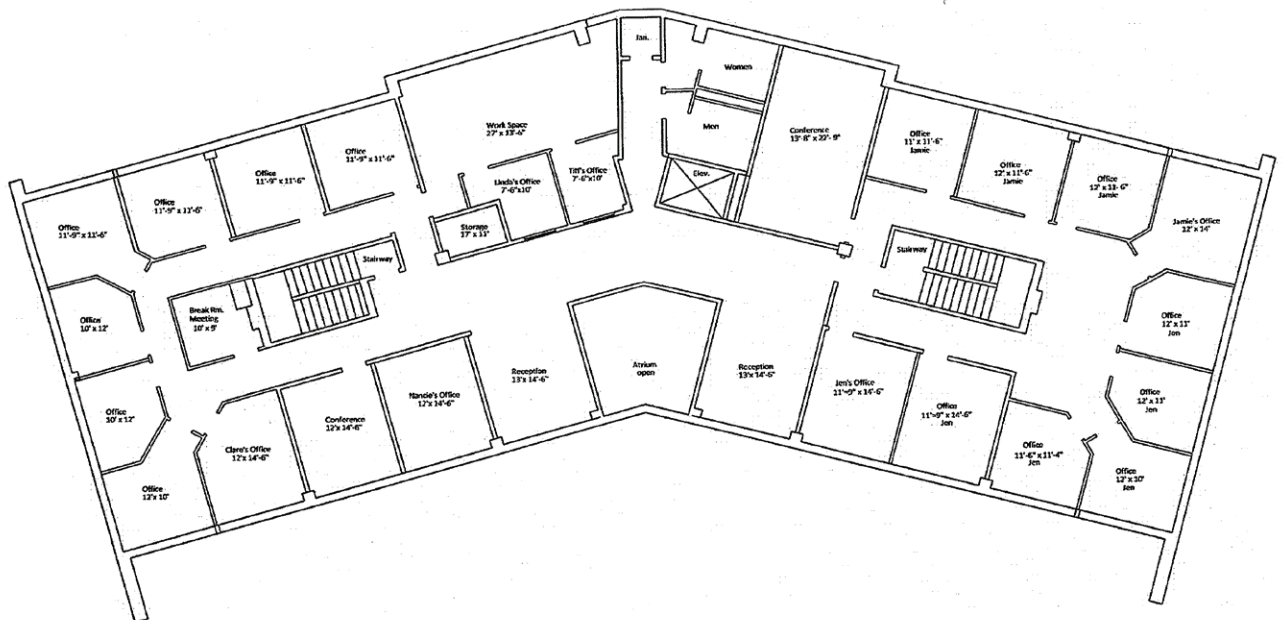
WESTRAC DR OFFICE

1202 WESTRAC DR, FARGO, ND 58103

GOLDMARK™
COMMERCIAL REAL ESTATE INC

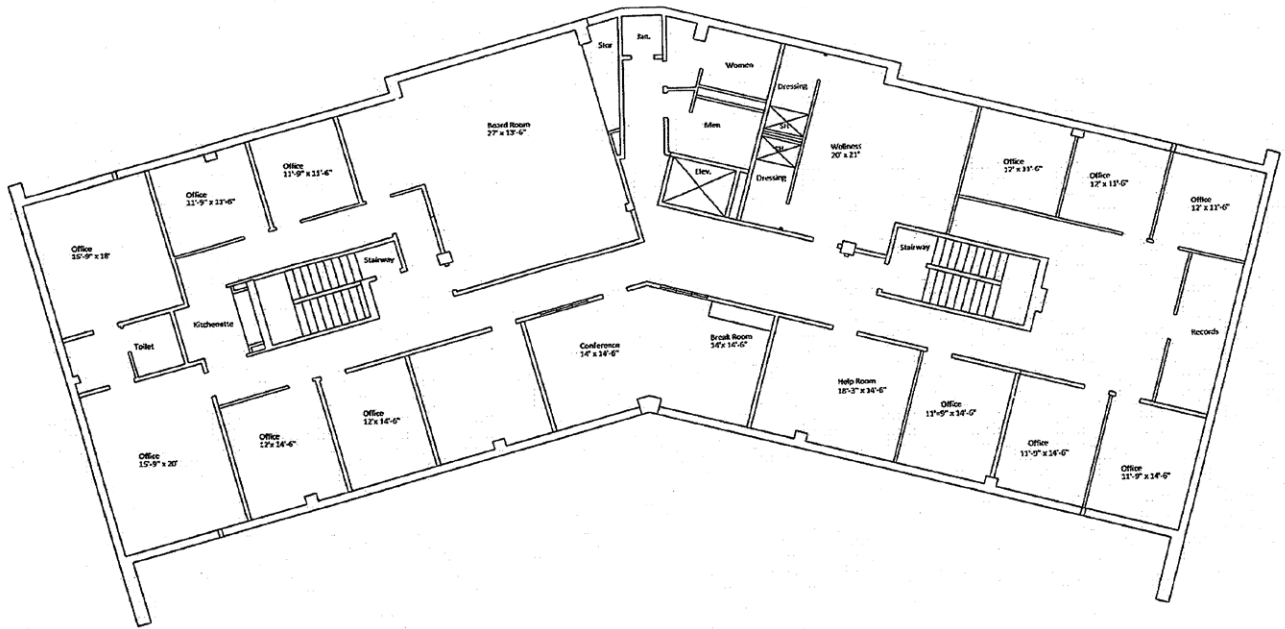


1202 WESTRAC DR, FARGO, ND 58103

 $3/32" \times 1'-6"$  $3/32 \times 1' 0''$

WESTRAC DR OFFICE

1202 WESTRAC DR, FARGO, ND 58103



FOURTH FLOOR PLAN
3/92-11-0