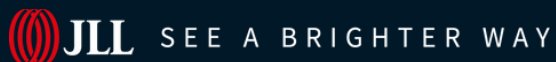




# For Lease

21,404 - 42,808 SF Warehouse & Office  
7500 & 7508 Jack Newell Blvd S | Fort Worth, TX



**Blake Rogers**  
blake.rogers@jll.com  
+1 817 395 2848

**Pat McDowell**  
pat.mcdowell@jll.com  
+1 817 334 8106



# About the Properties

## 7500 Jack Newell Blvd S

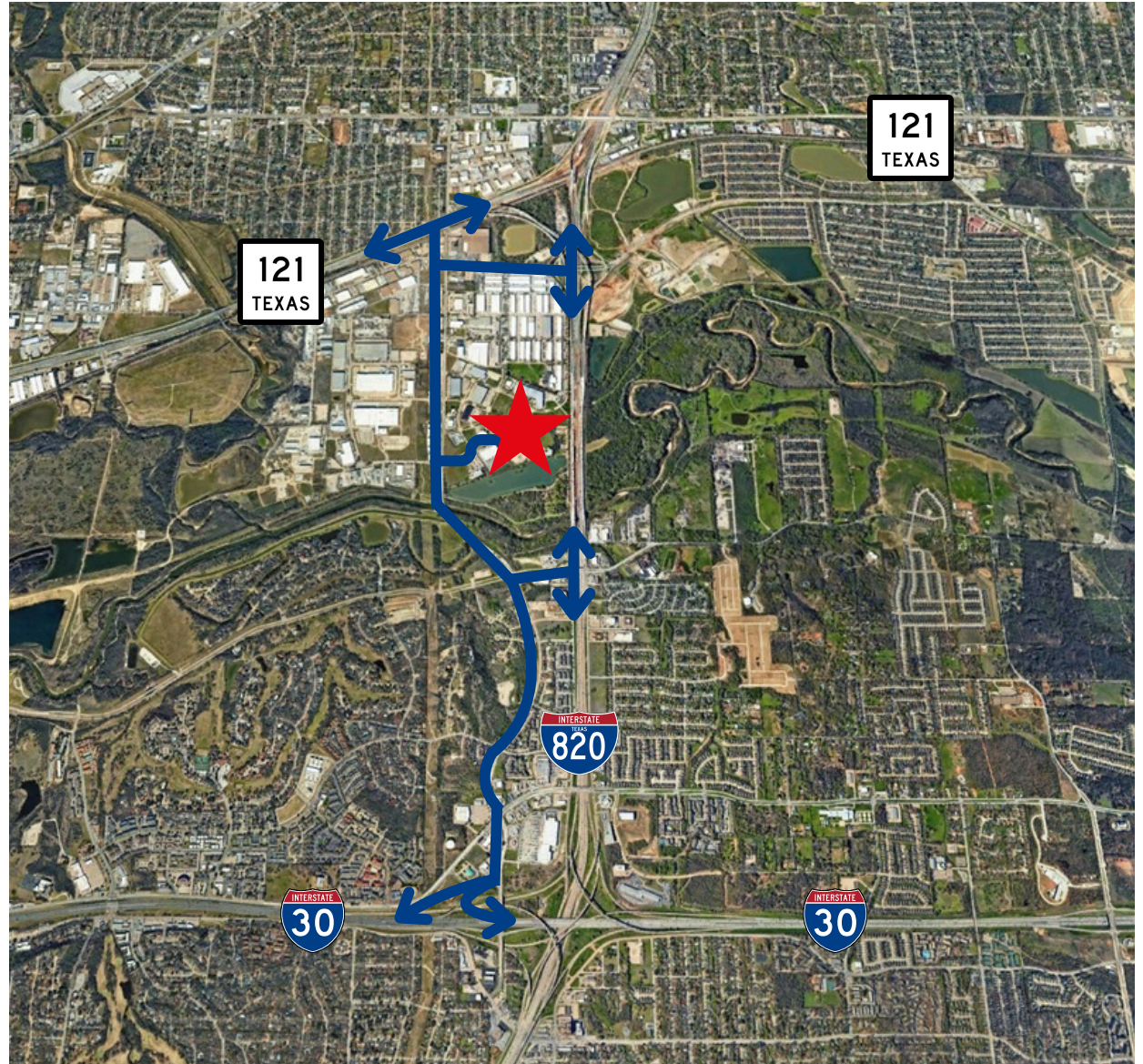
### Property Highlights

- End Cap Suite
- 8,404 SF Office
- 13,000 SF Warehouse
- 25' Clear Height
- Fenced Truck Court
- 1 Standard Dock Door with Leveler
- 1 Oversized Ramped Door
- Zoning: J-Medium Industrial

## 7508 Jack Newell Blvd S

### Property Highlights

- 1,400 SF Office
- 100% HVAC Warehouse
- 25'-27' Clear Height
- Motion Sensor Warehouse Lighting
- Truck Court: 130'
- 1 Standard Dock Door with Leveler
- 1 Oversized Ramped Door
- Zoning: J-Medium Industrial





Photos - 7500 Jack Newell





# Fenced Truck Court - 7500 Jack Newell





Photos - 7508 Jack Newell





# Map



# Thank you

## About JLL

For over 200 years, JLL (NYSE: JLL), a leading global commercial real estate and investment management company, has helped clients buy, build, occupy, manage and invest in a variety of commercial, industrial, hotel, residential and retail properties. A Fortune 500® company with annual revenue of \$20.9 billion and operations in over 80 countries around the world, our more than 103,000 employees bring the power of a global platform combined with local expertise. Driven by our purpose to shape the future of real estate for a better world, we help our clients, people and communities SEE A BRIGHTER WAY<sup>SM</sup>. JLL is the brand name, and a registered trademark, of Jones Lang LaSalle Incorporated. For further information, visit [jll.com](https://jll.com).

DISCLAIMER Although information has been obtained from sources deemed reliable, neither Owner nor JLL makes any guarantees, warranties or representations, express or implied, as to the completeness or accuracy as to the information contained herein. Any projections, opinions, assumptions or estimates used are for example only. There may be differences between projected and actual results, and those differences may be material. The Property may be withdrawn without notice. Neither Owner nor JLL accepts any liability for any loss or damage suffered by any party resulting from reliance on this information. If the recipient of this information has signed a confidentiality agreement regarding this matter, this information is subject to the terms of that agreement. ©2023. Jones Lang LaSalle IP, Inc. All rights reserved

**Blake Rogers**

[blake.rogers@jll.com](mailto:blake.rogers@jll.com)

+1 817 395 2848

**Pat McDowell**

[pat.mcdowell@jll.com](mailto:pat.mcdowell@jll.com)

+1 817 334 8106