

# CYPRESS RIDGE MEDICAL OFFICE

295 Patterson Road | Haines City, FL 33844

Medical Office For Lease



**LQ Commercial**  
REAL ESTATE SERVICES

**LQCRE.COM**



**CALL FOR  
RATES**

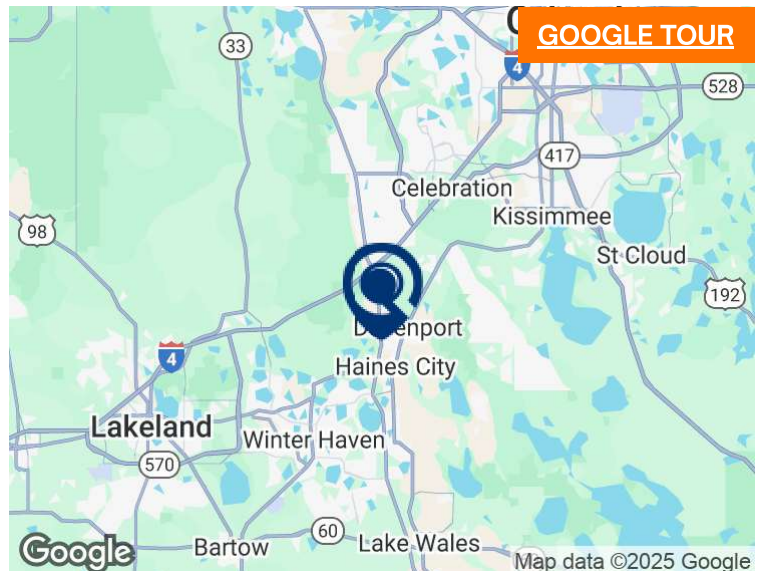


**3,863 SF  
AVAILABLE**



**9,148 SF  
RBA**

- 3,863 SF Turnkey Medical Office Space For Lease
- Site includes:
  - reception area
  - waiting area,
  - 3 exam rooms
  - nurses station
- 10 minutes from Interstate 4
- Close proximity to Heart of Florida Regional Medical Center



[PROPERTIES.LQCRE.COM/CYPRESS-MEDICAL-OFFICE](https://PROPERTIES.LQCRE.COM/CYPRESS-MEDICAL-OFFICE)



**TOTAL POPULATION  
90,402**



**5-YR POP. INCREASE  
3.8%**



**AVERAGE HH INCOME  
\$90,440**



**LQ Commercial**  
REAL ESTATE SERVICES

500 Winderley Pl #104  
Maitland, FL 32751  
**LQCRE.COM**

**Julia Sosa**

Founding Principal - Orlando

D: 407.775.4358

C: 407.257.8246

[jsosa@lqcre.com](mailto:jsosa@lqcre.com)

**Eva Royal**

Principal, Senior Associate

D: 407.705.2217

C: 407.421.3532

[eroyal@lqcre.com](mailto:eroyal@lqcre.com)

Information obtained from owner(s) or other sources deemed reliable. We have no reason to doubt its accuracy, but cannot guarantee it. All properties subject to change or withdrawal without notice.



# Medical Office For Lease



**LQCRE.COM**



500 Winderley Pl #104  
Maitland, FL 32751  
**LQCRE.COM**

jsosa@lqcre.com

**eroyal@lqcre.com**

Information obtained from owner(s) or other sources deemed reliable. We have no reason to doubt its accuracy, but cannot guarantee it. All properties subject to change or withdrawal without notice.



# CYPRESS RIDGE MEDICAL OFFICE

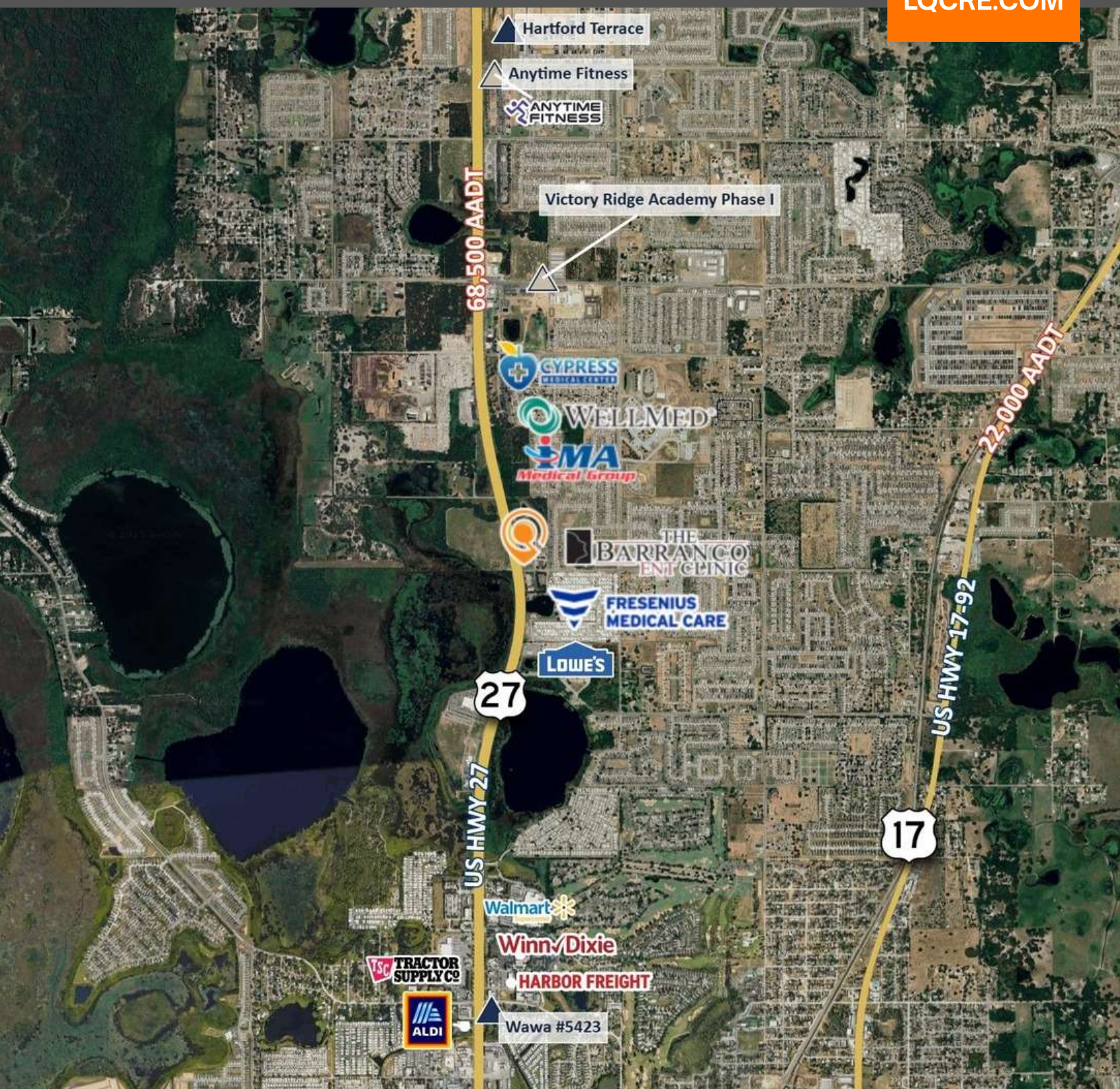
295 Patterson Road | Haines City, FL 33844

Medical Office For Lease



**LQ Commercial**  
REAL ESTATE SERVICES

**LQCRE.COM**



**LQ Commercial**  
REAL ESTATE SERVICES

500 Winderley Pl #104

Maitland, FL 32751

**LQCRE.COM**

**Julia Sosa**

Founding Principal - Orlando

D: 407.775.4358

C: 407.257.8246

[jsosa@lqcre.com](mailto:jsosa@lqcre.com)

**Eva Royal**

Principal, Senior Associate

D: 407.705.2217

C: 407.421.3532

[eroyal@lqcre.com](mailto:eroyal@lqcre.com)

Information obtained from owner(s) or other sources deemed reliable. We have no reason to doubt its accuracy, but cannot guarantee it. All properties subject to change or withdrawal without notice.